

PRODUCT INFORMATION PACKET

marathon®
Motors

Model No: 1011586-BR

Catalog No: 1011586

TerraMAX® Cast Iron Motor, 30 HP, 3 Ph, 60 Hz, 380 V, 1800 RPM, 180M Frame, TEFC



Regal and Marathon are trademarks of Regal Rexnord Corporation or one of its affiliated companies.
©2022 Regal Rexnord Corporation, All Rights Reserved. MC017097E

RegalRexnord

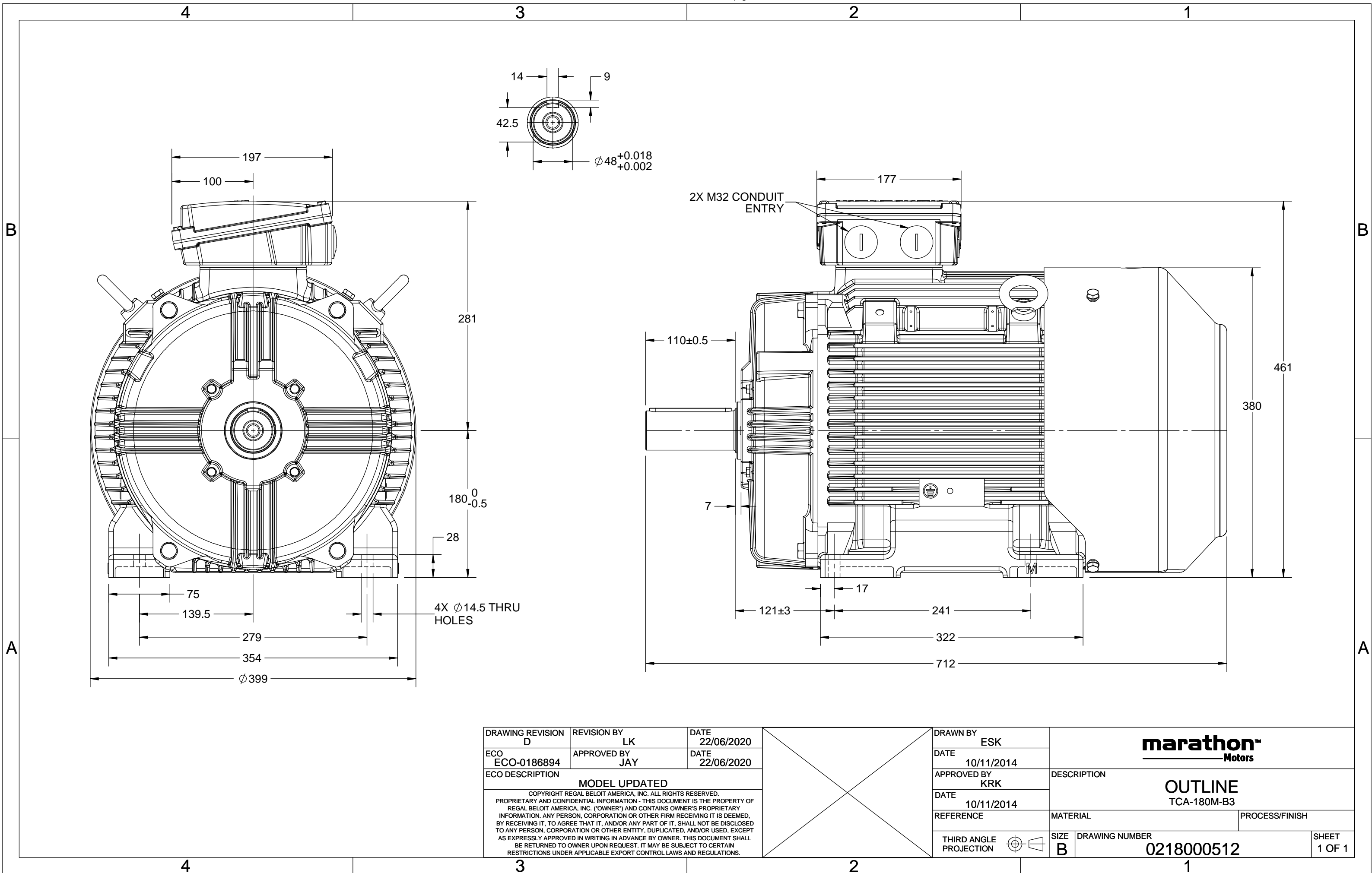
Nameplate Specifications

Output HP	30 Hp	Output KW	22.0 kW
Frequency	60 Hz	Voltage	380 V
Current	6.6 A	Speed	1777 rpm
Service Factor	1.25	Phase	3
Efficiency	93.6 %	Power Factor	0.81
Duty	S1	Insulation Class	F
Frame	180M	Enclosure	Totally Enclosed Fan Cooled
Thermal Protection	No Protection	Ambient Temperature	40 °C
Drive End Bearing Size	6311	Opp Drive End Bearing Size	6211
UL	No	CSA	No
CE	No	IP Code	55
Number of Speeds	1		

Technical Specifications

Electrical Type	Squirrel Cage	Starting Method	Direct On Line
Poles	4	Rotation	Clockwise
Mounting	B3	Motor Orientation	Horizontal
Drive End Bearing	Zz C3	Opp Drive End Bearing	Zz C3
Frame Material	Cast	Shaft Type	Keyed
Overall Length	712 mm	Frame Length	328 mm
Shaft Diameter	48 mm	Shaft Extension	110 mm
Assembly/Box Mounting	TOP		
Outline Drawing	0218000512		

This is an uncontrolled document once printed or downloaded and is subject to change without notice. Date Created:12/02/2022



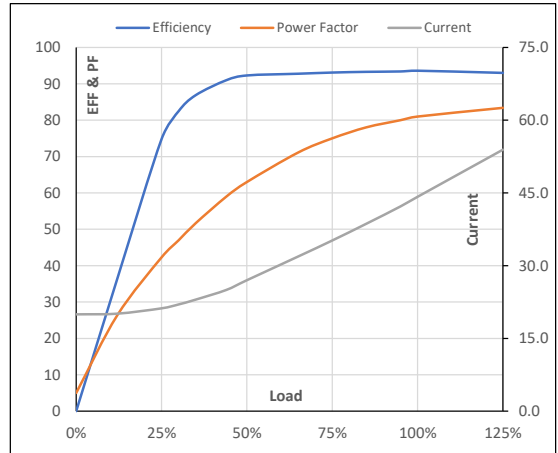
Model No. 1011586

Enclosure	U (V)	Δ / Y Conn	f [Hz]	P [kW]	P [hp]	I [A]	n [RPM]	T [kgm]	T [Nm]	IE Class	Amb [°C]	Duty	Elevation [m]	Inertia [kg-m ²]	Weight [kg]
TEFC	380	Δ	60	22	30	44.2	1777	12.09	118.58	IR3	40	S1	1000	0.883	220

Motor Load Data

Load Point		NL	1/4FL	1/2FL	3/4FL	FL	5/4FL
Current	A	20.0	21.2	27.0	35.2	44.2	53.9
Torque	Nm	0.0	29.8	59.7	89.9	118.6	150.9
Speed	r/min	1800	1794	1789	1783	1777	1770
Efficiency	%	0.0	74.8	92.3	93.1	93.6	93.0
Power Factor	%	5.0	42.3	63.0	75.0	81.0	83.4

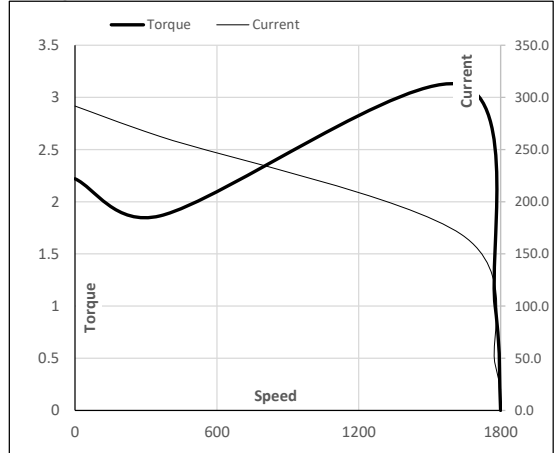
Performance vs Load Chart



Motor Speed Torque Data

Load Point		LR	P-Up	BD	Rated	NL
Speed	r/min	0	360	1635	1777	1800
Current	A	291.7	262.5	168.5	44.2	20.0
Torque	pu	2.2	1.9	3.1	1	0

Starting Characteristics Chart



NOTE Refer data sheet for applicable standard and tolerances on performance parameters

Issued By

Issued Date