

PRODUCT INFORMATION PACKET

marathon®
Motors

Model No: 1009471-BR

Catalog No: 1009471

TerraMAX® Cast Iron Motor, 6 HP, 3 Ph, 60 Hz, 380 V, 900 RPM, 160M Frame, TEFC



Regal and Marathon are trademarks of Regal Rexnord Corporation or one of its affiliated companies.
©2022 Regal Rexnord Corporation, All Rights Reserved. MC017097E

RegalRexnord

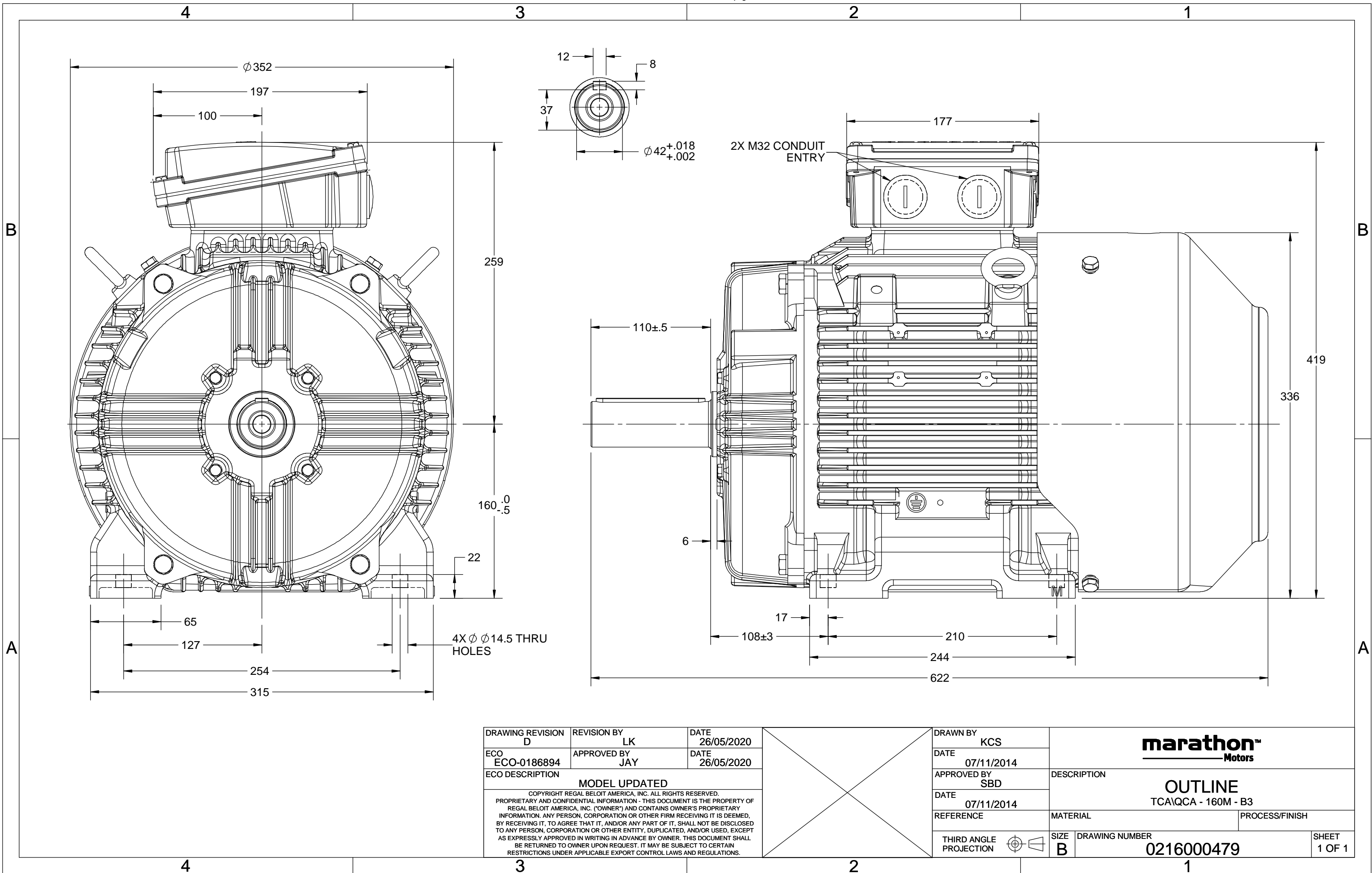
Nameplate Specifications

Output HP	6 Hp	Output KW	4.5 kW
Frequency	60 Hz	Voltage	380 V
Current	11.4 A	Speed	884 rpm
Service Factor	1.25	Phase	3
Efficiency	86.5 %	Power Factor	0.68
Duty	S1	Insulation Class	F
Frame	160M	Enclosure	Totally Enclosed Fan Cooled
Thermal Protection	No Protection	Ambient Temperature	40 °C
Drive End Bearing Size	6309	Opp Drive End Bearing Size	6209
UL	No	CSA	No
CE	No	IP Code	55
Number of Speeds	1		

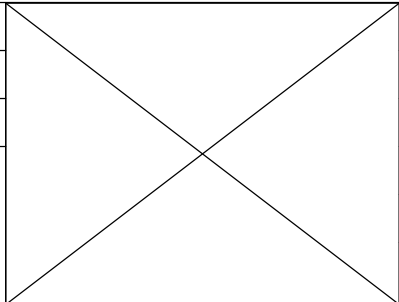
Technical Specifications

Electrical Type	Squirrel Cage	Starting Method	Direct On Line
Poles	8	Rotation	Clockwise
Mounting	B3	Motor Orientation	Horizontal
Drive End Bearing	Zz C3	Opp Drive End Bearing	Zz C3
Frame Material	Cast	Shaft Type	Keyed
Overall Length	622 mm	Frame Length	254 mm
Shaft Diameter	42 mm	Shaft Extension	110 mm
Assembly/Box Mounting	TOP		
Outline Drawing	0216000479		

This is an uncontrolled document once printed or downloaded and is subject to change without notice. Date Created:12/02/2022



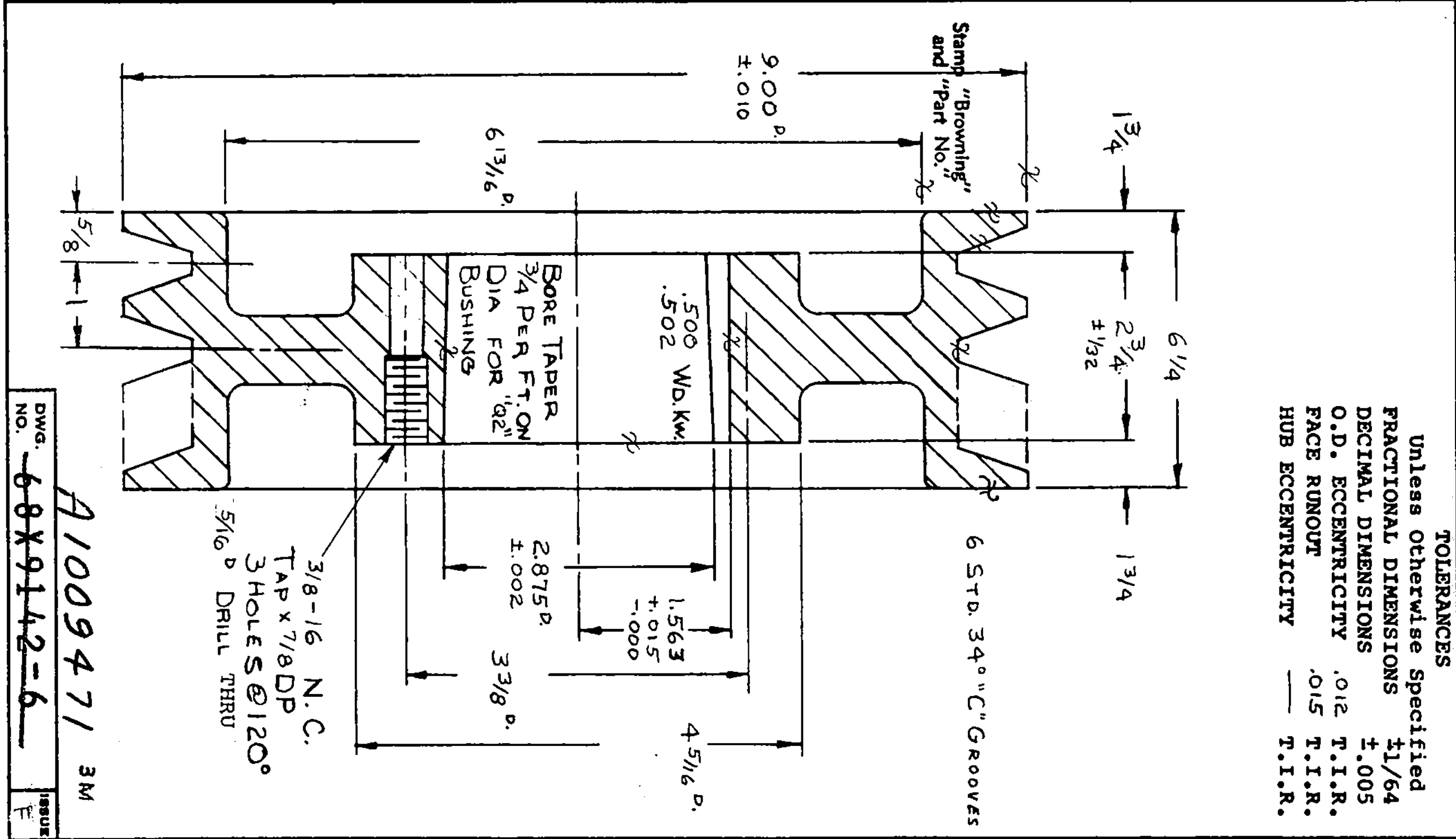
DRAWING REVISION D	REVISION BY LK	DATE 26/05/2020
ECO ECO-0186894	APPROVED BY JAY	DATE 26/05/2020
ECO DESCRIPTION MODEL UPDATED		
COPYRIGHT REGAL BELOIT AMERICA, INC. ALL RIGHTS RESERVED. PROPRIETARY AND CONFIDENTIAL INFORMATION - THIS DOCUMENT IS THE PROPERTY OF REGAL BELOIT AMERICA, INC. ("OWNER") AND CONTAINS OWNER'S PROPRIETARY INFORMATION. ANY PERSON, CORPORATION OR OTHER FIRM RECEIVING IT IS DEEMED, BY RECEIVING IT, TO AGREE THAT IT, AND/OR ANY PART OF IT, SHALL NOT BE DISCLOSED TO ANY PERSON, CORPORATION OR OTHER ENTITY, DUPLICATED, AND/OR USED, EXCEPT AS EXPRESSLY APPROVED IN WRITING IN ADVANCE BY OWNER. THIS DOCUMENT SHALL BE RETURNED TO OWNER UPON REQUEST. IT MAY BE SUBJECT TO CERTAIN RESTRICTIONS UNDER APPLICABLE EXPORT CONTROL LAWS AND REGULATIONS.		



DRAWN BY KCS	marathon™ Motors		
DATE 07/11/2014			
APPROVED BY SBD	DESCRIPTION OUTLINE TCA/QCA - 160M - B3		
DATE 07/11/2014			
REFERENCE	MATERIAL	PROCESS/FINISH	
THIRD ANGLE PROJECTION	SIZE B	DRAWING NUMBER 0216000479	SHEET 1 OF 1

FORM 14
FORM #6052

BROWNING MANUFACTURING COMPANY, MAYSVILLE, KENTUCKY			12465					
DATE	1-12-68	6TC86 Cast Iron Sheave	Material- 6TC86-88 CSTG					
DR.	S. Y. JR.		Carton- T116					
CHK'D	JA		Balance- 1/4 oz.					
DISTRIBUTION		Mfg. Data	Finish- STD. GRAY					
REVISION	BY	DATE	REVISION	BY	DATE	REVISION	BY	DATE
A	ADD DRILL DEPTH & GROOVE LOC.	AD 9/3/68	D	REVISED PER CR77-37	RG 2-8-77			
B	CSTG. WAS 6TCB6	AP 7-1-69	E	CORR. HUB LGTH ELO83-133E	MD 5-26-83			
C	Revised Per CR74-170	JH 9/74	F	ELO91-759	KH 4-92			



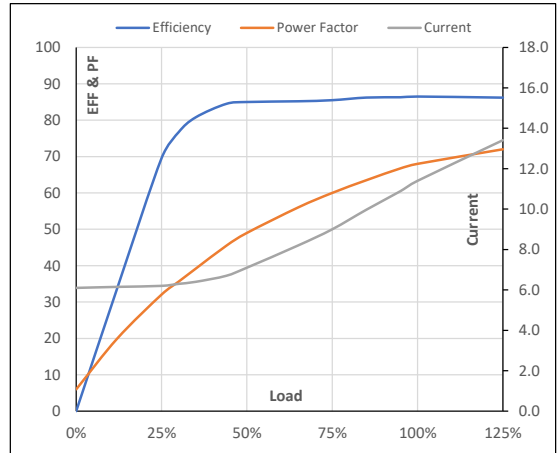
Model No. 1009471

Enclosure	U (V)	Δ / Y Conn	f [Hz]	P [kW]	P [hp]	I [A]	n [RPM]	T [kgm]	T [Nm]	IE Class	Amb [°C]	Duty	Elevation [m]	Inertia [kg-m ²]	Weight [kg]
TEFC	380	Δ	60	4.5	6	11.4	884	4.86	47.63	IR3	40	S1	1000	0.705	155

Motor Load Data

Load Point		NL	1/4FL	1/2FL	3/4FL	FL	5/4FL
Current	A	6.1	6.2	7.1	9.0	11.4	13.4
Torque	Nm	0.0	11.9	24.0	36.1	47.6	60.8
Speed	r/min	900	896	892	888	884	879
Efficiency	%	0.0	69.5	85.0	85.5	86.5	86.2
Power Factor	%	6.0	32.0	49.0	60.0	68.0	72.0

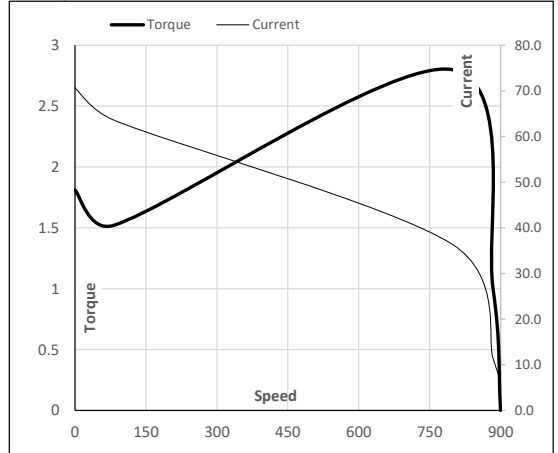
Performance vs Load Chart



Motor Speed Torque Data

Load Point		LR	P-Up	BD	Rated	NL
Speed	r/min	0	82	797	884	900
Current	A	70.7	63.6	36.5	11.4	6.1
Torque	pu	1.8	1.5	2.8	1	0

Starting Characteristics Chart



NOTE Refer data sheet for applicable standard and tolerances on performance parameters

Issued By

Issued Date