

PRODUCT INFORMATION PACKET

marathon®
Motors

Model No: 1009467-BR

Catalog No: 1009467

TerraMAX® Cast Iron Motor, 2 HP, 3 Ph, 60 Hz, 380 V, 900 RPM, 112M Frame, TEFC



Regal and Marathon are trademarks of Regal Rexnord Corporation or one of its affiliated companies.
©2022 Regal Rexnord Corporation, All Rights Reserved. MC017097E

RegalRexnord

Nameplate Specifications

| | | | |
|------------------------|---------------|----------------------------|-----------------------------|
| Output HP | 2 Hp | Output KW | 1.5 kW |
| Frequency | 60 Hz | Voltage | 380 V |
| Current | 4.0 A | Speed | 868 rpm |
| Service Factor | 1.25 | Phase | 3 |
| Efficiency | 84 % | Power Factor | 0.67 |
| Duty | S1 | Insulation Class | F |
| Frame | 112M | Enclosure | Totally Enclosed Fan Cooled |
| Thermal Protection | No Protection | Ambient Temperature | 40 °C |
| Drive End Bearing Size | 6306 | Opp Drive End Bearing Size | 6206 |
| UL | No | CSA | No |
| CE | No | IP Code | 55 |
| Number of Speeds | 1 | | |

Technical Specifications

| | | | |
|-----------------------|---------------|-----------------------|----------------|
| Electrical Type | Squirrel Cage | Starting Method | Direct On Line |
| Poles | 8 | Rotation | Clockwise |
| Mounting | B3 | Motor Orientation | Horizontal |
| Drive End Bearing | Zzc3 | Opp Drive End Bearing | Zz C3 |
| Frame Material | Cast | Shaft Type | Keyed |
| Overall Length | 419 mm | Frame Length | 174 mm |
| Shaft Diameter | 28 mm | Shaft Extension | 60 mm |
| Assembly/Box Mounting | TOP | | |
| Outline Drawing | 0211200278 | | |

This is an uncontrolled document once printed or downloaded and is subject to change without notice. Date Created:12/02/2022

4

3

Uncontrolled Copy

2

1

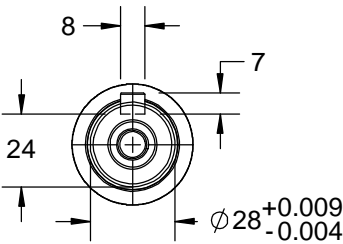
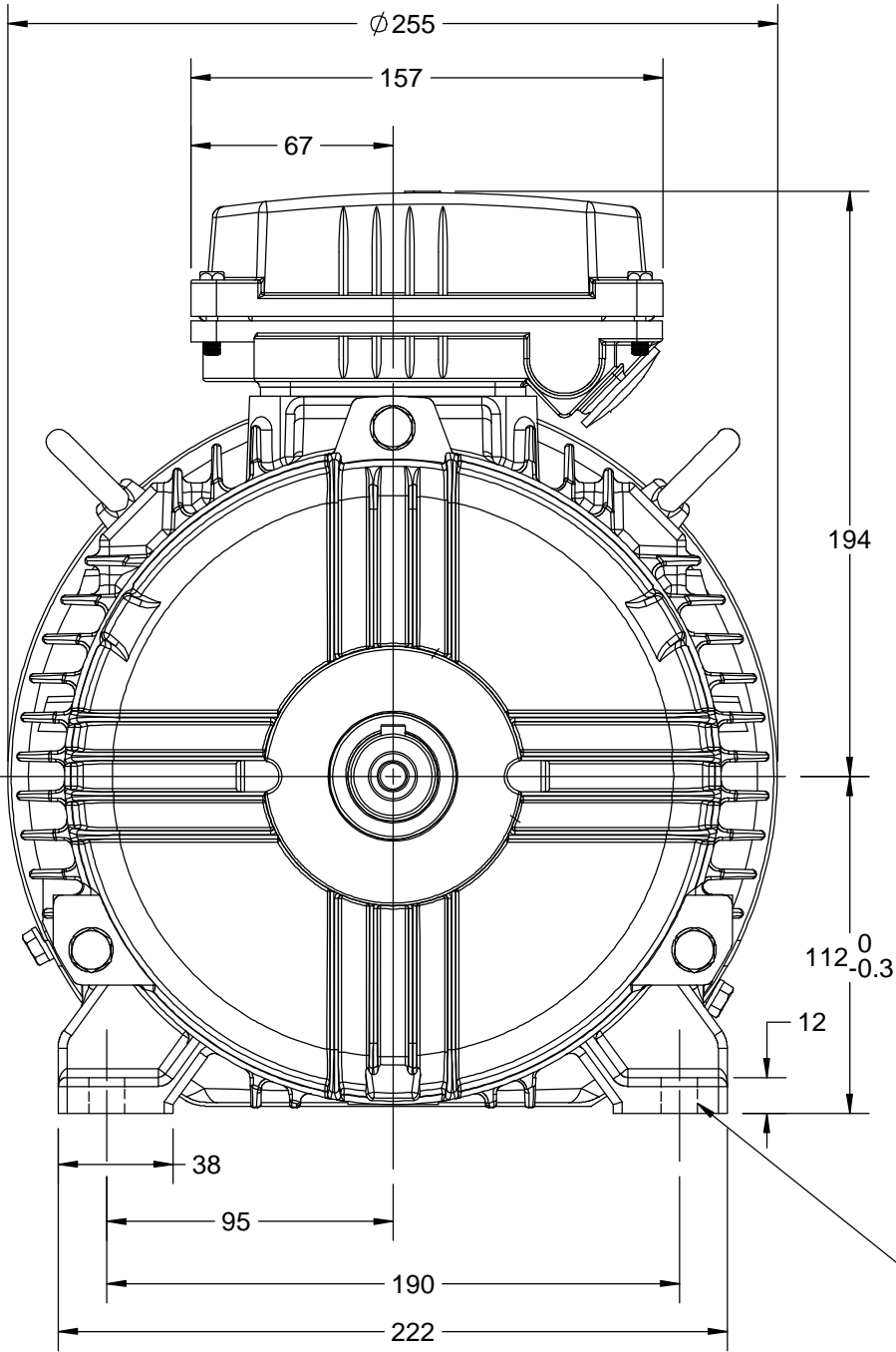
OUTLINE

B

B

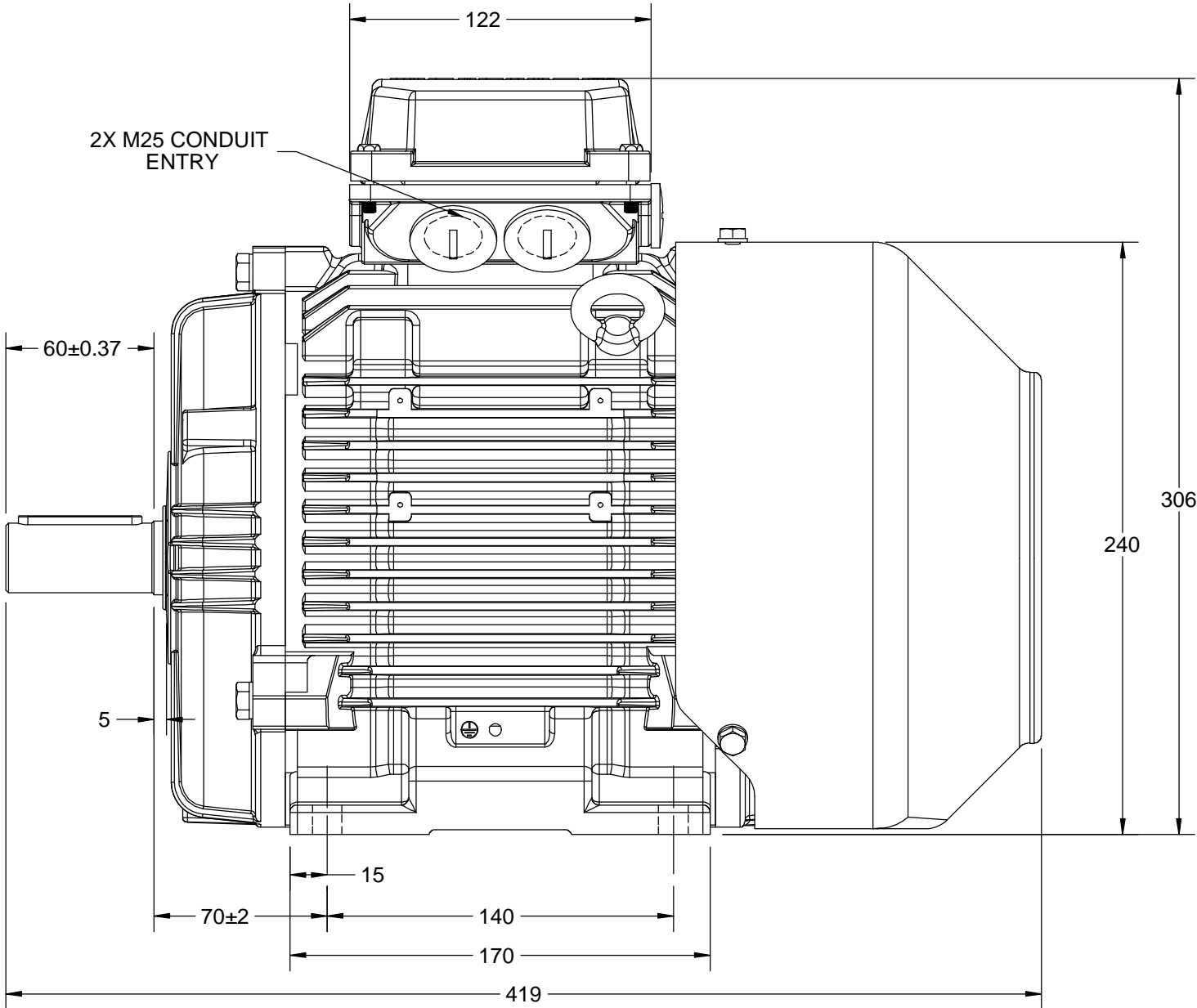
A

A



4X Ø 12 THRU HOLES

2X M25 CONDUIT ENTRY



| | | |
|--|---------------------|--------------------|
| DRAWING REVISION A | REVISION BY UDAY | DATE 28/08/2017 |
| ECO ECO-0130161 | APPROVED BY SBD | DATE 28/08/2017 |
| ECO DESCRIPTION NEW DRAWING RELEASE | | |
| COPYRIGHT REGAL BELOIT AMERICA, INC. ALL RIGHTS RESERVED. PROPRIETARY AND CONFIDENTIAL INFORMATION - THIS DOCUMENT IS THE PROPERTY OF REGAL BELOIT AMERICA, INC. ("OWNER") AND CONTAINS OWNER'S PROPRIETARY INFORMATION. ANY PERSON, CORPORATION OR OTHER FIRM RECEIVING IT IS DEEMED, BY RECEIVING IT, TO AGREE THAT IT, AND/OR ANY PART OF IT, SHALL NOT BE DISCLOSED TO ANY PERSON, CORPORATION OR OTHER ENTITY, DUPLICATED, AND/OR USED, EXCEPT AS EXPRESSLY APPROVED IN WRITING IN ADVANCE BY OWNER. THIS DOCUMENT SHALL BE RETURNED TO OWNER UPON REQUEST. IT MAY BE SUBJECT TO CERTAIN RESTRICTIONS UNDER APPLICABLE EXPORT CONTROL LAWS AND REGULATIONS. | | |

| | | | |
|---------------------------|--|------------------------------|-----------------|
| DRAWN BY MR | marathon™ Motors | | |
| DATE 18/11/2014 | | | |
| APPROVED BY JOY | DESCRIPTION OUTLINE | | |
| DATE 18/11/2014 | 112 FR.- B3-H/O MTG. MOTOR TYPE: TCA/QCA | | |
| REFERENCE | MATERIAL | PROCESS/FINISH | |
| THIRD ANGLE PROJECTION | SIZE B | DRAWING NUMBER 0211200278 | SHEET 1 OF 1 |

4

3

2

1

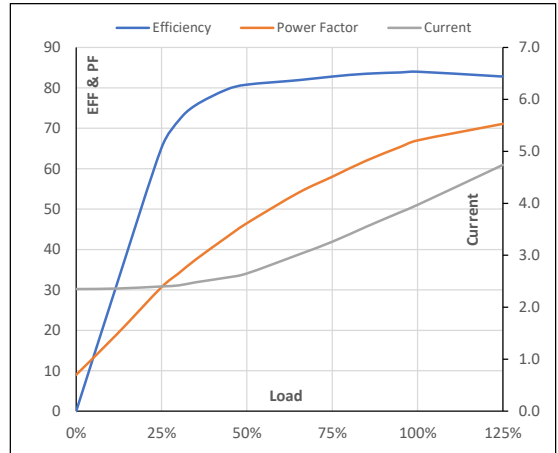
Model No. 1009467

| Enclosure | U (V) | Δ / Y Conn | f [Hz] | P [kW] | P [hp] | I [A] | n [RPM] | T [kgm] | T [Nm] | IE Class | Amb [°C] | Duty | Elevation [m] | Inertia [kg-m ²] | Weight [kg] |
|-----------|----------|---------------|-----------|-----------|-----------|----------|------------|------------|-----------|-------------|-------------|------|------------------|---------------------------------|----------------|
| TEFC | 380 | Δ | 60 | 1.5 | 2 | 4.0 | 868 | 1.65 | 16.17 | IR3 | 40 | S1 | 1000 | 0.0856 | 55 |

Motor Load Data

| Load Point | | NL | 1/4FL | 1/2FL | 3/4FL | FL | 5/4FL |
|--------------|-------|-----|-------|-------|-------|------|-------|
| Current | A | 2.4 | 2.4 | 2.7 | 3.3 | 4.0 | 4.7 |
| Torque | Nm | 0.0 | 4.0 | 8.1 | 12.2 | 16.2 | 20.8 |
| Speed | r/min | 900 | 892 | 885 | 877 | 868 | 856 |
| Efficiency | % | 0.0 | 65.2 | 80.8 | 82.8 | 84.0 | 82.8 |
| Power Factor | % | 9.0 | 30.7 | 46.5 | 58.0 | 67.0 | 71.1 |

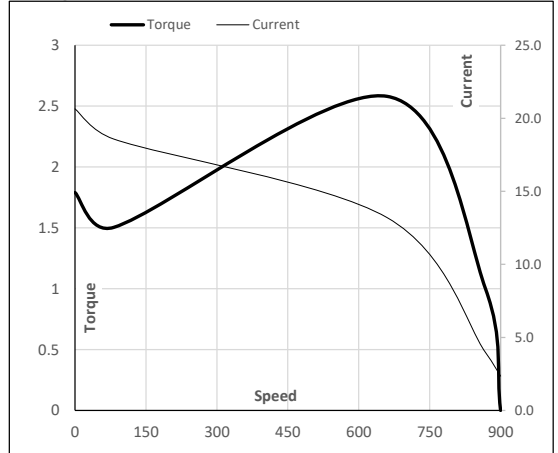
Performance vs Load Chart



Motor Speed Torque Data

| Load Point | | LR | P-Up | BD | Rated | NL |
|------------|-------|------|------|------|-------|-----|
| Speed | r/min | 0 | 82 | 660 | 868 | 900 |
| Current | A | 20.6 | 18.6 | 13.2 | 4.0 | 2.4 |
| Torque | pu | 1.8 | 1.5 | 2.6 | 1 | 0 |

Starting Characteristics Chart



NOTE Refer data sheet for applicable standard and tolerances on performance parameters

Issued By
Issued Date