

# PRODUCT INFORMATION PACKET

**marathon®**  
Motors

Model No: 1009466-BR

Catalog No: 1009466

TerraMAX® Cast Iron Motor, 1.50 HP, 3 Ph, 60 Hz, 380 V, 900 RPM, 100L1 Frame, TEFC



Regal and Marathon are trademarks of Regal Rexnord Corporation or one of its affiliated companies.  
©2022 Regal Rexnord Corporation, All Rights Reserved. MC017097E

**RegalRexnord**

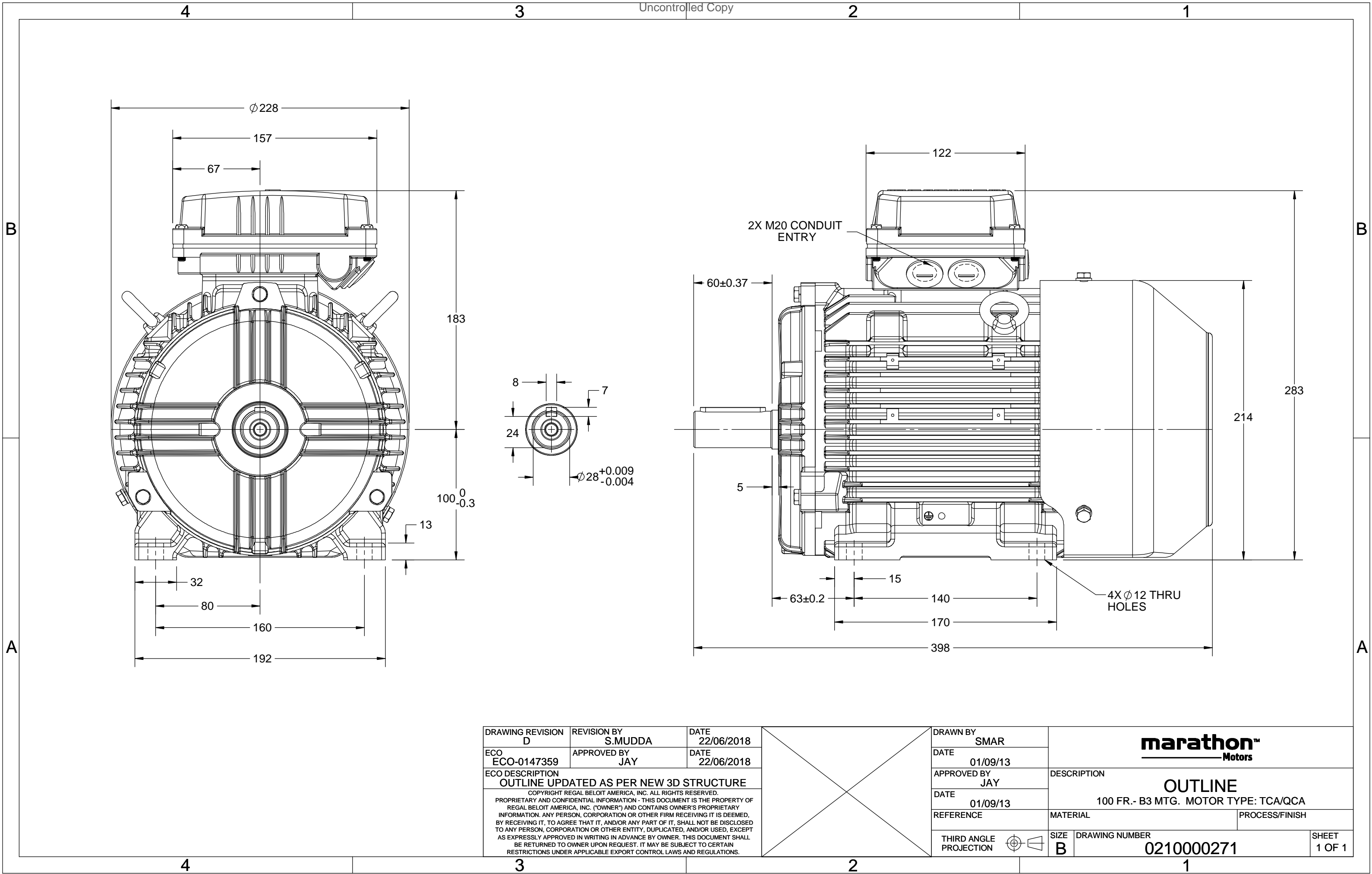
### Nameplate Specifications

Output HP	1.50 Hp	Output KW	1.1 kW
Frequency	60 Hz	Voltage	380 V
Current	3.5 A	Speed	875 rpm
Service Factor	1.25	Phase	3
Efficiency	78.5 %	Power Factor	0.62
Duty	S1	Insulation Class	F
Frame	100L1	Enclosure	Totally Enclosed Fan Cooled
Thermal Protection	No Protection	Ambient Temperature	40 °C
Drive End Bearing Size	6206	Opp Drive End Bearing Size	6206
UL	No	CSA	No
CE	No	IP Code	55
Number of Speeds	1		

### Technical Specifications

Electrical Type	Squirrel Cage	Starting Method	Direct On Line
Poles	8	Rotation	Clockwise
Mounting	B3	Motor Orientation	Horizontal
Drive End Bearing	Zz C3	Opp Drive End Bearing	Zz C3
Frame Material	Cast	Shaft Type	Keyed
Overall Length	398 mm	Frame Length	200 mm
Shaft Diameter	28 mm	Shaft Extension	60 mm
Assembly/Box Mounting	TOP		
Outline Drawing	0210000271		

This is an uncontrolled document once printed or downloaded and is subject to change without notice. Date Created:12/02/2022



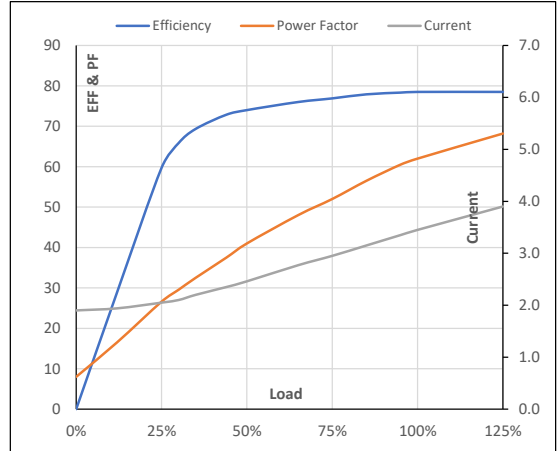
Model No. 1009466

Enclosure	U (V)	Δ / Y Conn	f [Hz]	P [kW]	P [hp]	I [A]	n [RPM]	T [kgm]	T [Nm]	IE Class	Amb [°C]	Duty	Elevation [m]	Inertia [kg-m <sup>2</sup> ]	Weight [kg]
TEFC	380	Δ	60	1.1	2	3.5	875	1.23	12.05	IR3	40	S1	1000	0.0688	38

**Motor Load Data**

Load Point		NL	1/4FL	1/2FL	3/4FL	FL	5/4FL
Current	A	1.9	2.1	2.5	3.0	3.5	3.9
Torque	Nm	0.0	3.0	6.0	9.1	12.1	15.4
Speed	r/min	900	893	888	882	875	867
Efficiency	%	0.0	59.7	74.0	76.9	78.5	78.5
Power Factor	%	8.0	26.6	41.0	52.0	62.0	68.2

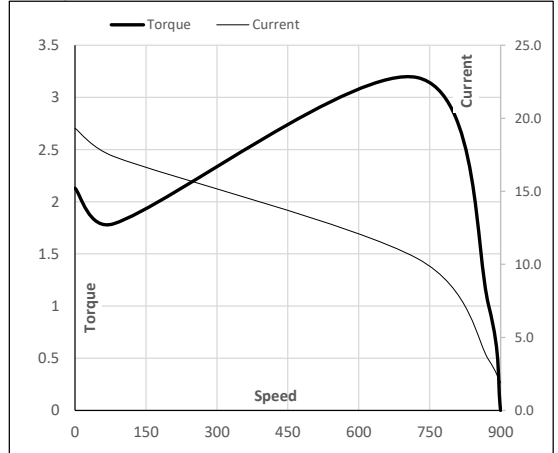
**Performance vs Load Chart**



**Motor Speed Torque Data**

Load Point		LR	P-Up	BD	Rated	NL
Speed	r/min	0	82	724	875	900
Current	A	19.3	17.4	10.4	3.5	1.9
Torque	pu	2.1	1.8	3.2	1	0

**Starting Characteristics Chart**



**NOTE** Refer data sheet for applicable standard and tolerances on performance parameters

Issued By

Issued Date