

PRODUCT INFORMATION PACKET

marathon®
Motors

Model No: 1009464-BR

Catalog No: 1009464

TerraMAX® Cast Iron Motor, 450 HP, 3 Ph, 60 Hz, 380 V, 1200 RPM, 355M/L Frame, TEFC



Regal and Marathon are trademarks of Regal Rexnord Corporation or one of its affiliated companies.

©2022 Regal Rexnord Corporation, All Rights Reserved. MC017097E

RegalRexnord

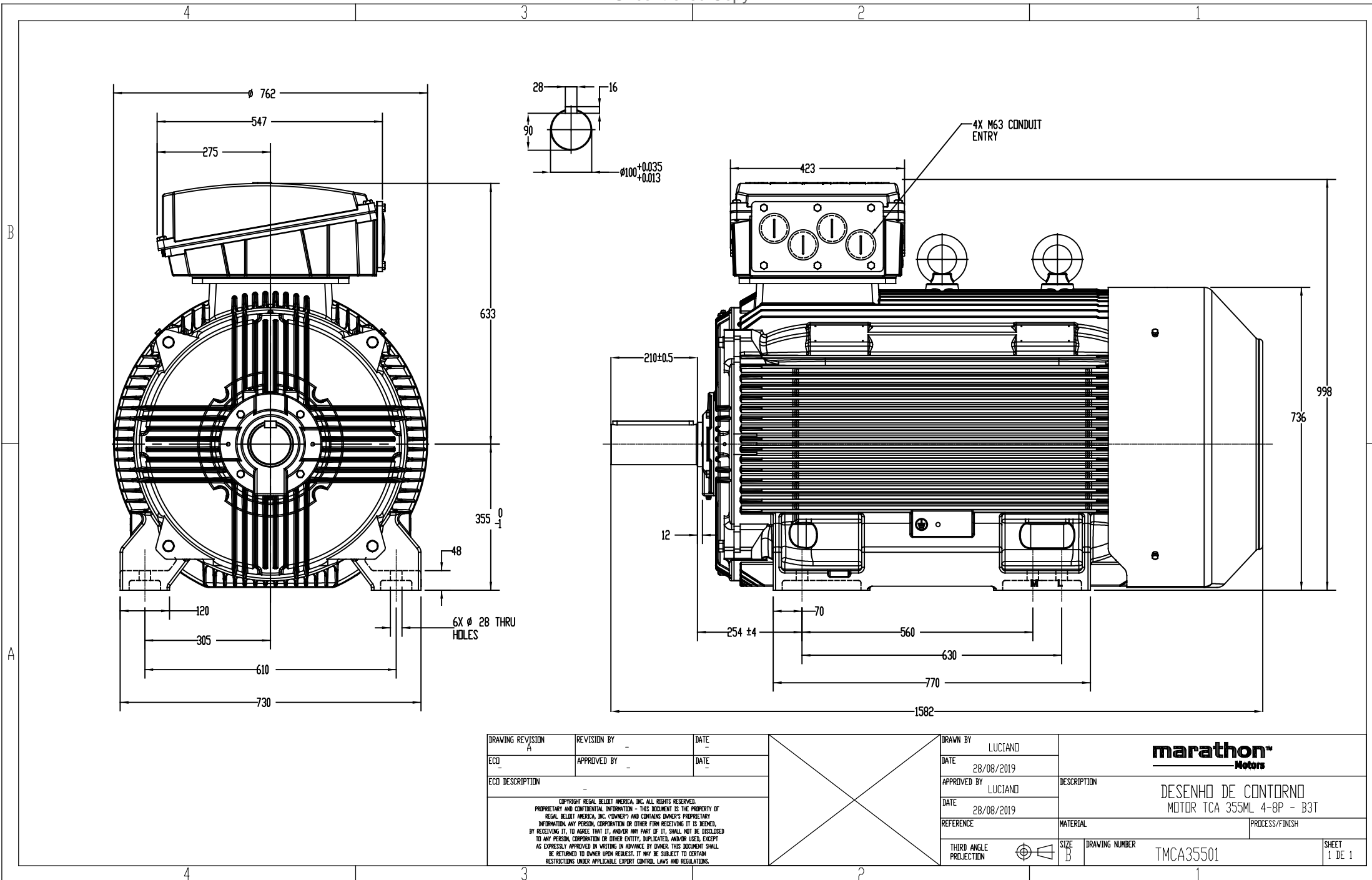
Nameplate Specifications

Output HP	450 Hp	Output KW	330.0 kW
Frequency	60 Hz	Voltage	380 V
Current	618.0 A	Speed	1191 rpm
Service Factor	1.15	Phase	3
Efficiency	95.8 %	Power Factor	0.85
Duty	S1	Insulation Class	F
Frame	355M/L	Enclosure	Totally Enclosed Fan Cooled
Thermal Protection	No Protection	Ambient Temperature	40 °C
Drive End Bearing Size	6322	Opp Drive End Bearing Size	6322
UL	No	CSA	No
CE	No	IP Code	55
Number of Speeds	1		

Technical Specifications

Electrical Type	Squirrel Cage	Starting Method	Direct On Line
Poles	6	Rotation	Clockwise
Mounting	B3	Motor Orientation	Horizontal
Drive End Bearing	C3	Opp Drive End Bearing	C3
Frame Material	Cast	Shaft Type	Keyed
Overall Length	1582 mm	Frame Length	1010 mm
Shaft Diameter	100 mm	Shaft Extension	210 mm
Assembly/Box Mounting	TOP		
Outline Drawing	TMCA35501		

This is an uncontrolled document once printed or downloaded and is subject to change without notice. Date Created:12/02/2022



DRAWING REVISION A	REVISION BY -	DATE -		DRAWN BY LUCIANO	<div><div>marathon</div><div>Motors</div></div> <div>DESENHO DE CONTORNO</div> <div>MOTOR TCA 355ML 4-8P - B3T</div>			
ECD -	APPROVED BY -	DATE -		DATE 28/08/2019				
ECD DESCRIPTION -				APPROVED BY LUCIANO				
				DATE 28/08/2019				
COPYRIGHT REGAL BELLET AMERICA, INC. ALL RIGHTS RESERVED. PROPRIETARY AND CONFIDENTIAL INFORMATION - THIS DOCUMENT IS THE PROPERTY OF REGAL BELLET AMERICA, INC. ("OWNER") AND CONTAINS OWNER'S PROPRIETARY INFORMATION. ANY PERSON, CORPORATION OR OTHER FIRM RECEIVING IT IS DEEMED, BY RECEIVING IT, TO AGREE THAT IT, AND/OR ANY PART OF IT, SHALL NOT BE DISCLOSED TO ANY PERSON, CORPORATION OR OTHER ENTITY, DUPLICATED, AND/OR USED, EXCEPT AS EXPRESSLY APPROVED IN WRITING IN ADVANCE BY OWNER. THIS DOCUMENT SHALL BE RETURNED TO OWNER UPON REQUEST. IT MAY BE SUBJECT TO CERTAIN RESTRICTIONS UNDER APPLICABLE EXPORT CONTROL LAWS AND REGULATIONS.				REFERENCE	MATERIAL	PROCESS/FINISH		
				THIRD ANGLE PROJECTION		SIZE B	DRAWING NUMBER TMCA35501	SHEET 1 DE 1

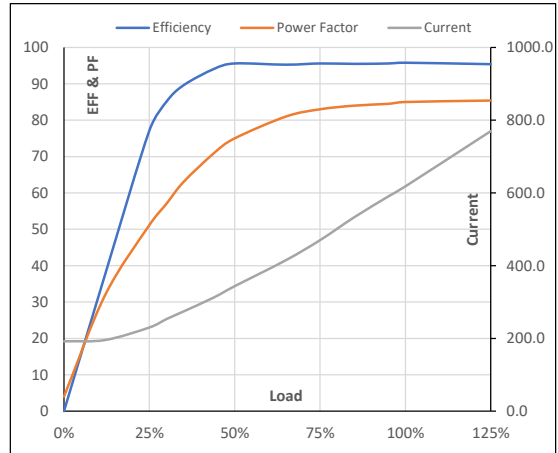
Model No. 1009464

Enclosure	U (V)	Δ / Y Conn	f [Hz]	P [kW]	P [hp]	I [A]	n [RPM]	T [kgm]	T [Nm]	IE Class	Amb [°C]	Duty	Elevation [m]	Inertia [kg-m ²]	Weight [kg]
TEFC	380	Δ	60	330	450	618.0	1191	270.32	2650.90	IR3	40	S1	1000	63.866	2243

Motor Load Data

Load Point		NL	1/4FL	1/2FL	3/4FL	FL	5/4FL
Current	A	192.0	230.0	343.6	470.1	618.0	769.8
Torque	Nm	0.0	668.9	1340.1	2013.9	2650.9	3370.6
Speed	r/min	1200	1198	1196	1194	1191	1189
Efficiency	%	0.0	77.1	95.6	95.6	95.8	95.4
Power Factor	%	4.0	51.1	75.0	83.0	85.0	85.4

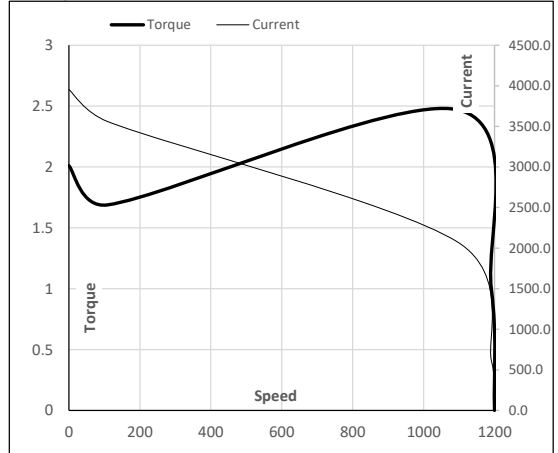
Performance vs Load Chart



Motor Speed Torque Data

Load Point		LR	P-Up	BD	Rated	NL
Speed	r/min	0	109	1096	1191	1200
Current	A	3955.2	3559.7	2075.6	618.0	192.0
Torque	pu	2.0	1.7	2.5	1	0

Starting Characteristics Chart



NOTE Refer data sheet for applicable standard and tolerances on performance parameters

Issued By

Issued Date