

PRODUCT INFORMATION PACKET

marathon®
Motors

Model No: 1009463-BR

Catalog No: 1009463

TerraMAX® Cast Iron Motor, 400 HP, 3 Ph, 60 Hz, 380 V, 1200 RPM, 355M/L Frame, TEFC



Regal and Marathon are trademarks of Regal Rexnord Corporation or one of its affiliated companies.

©2022 Regal Rexnord Corporation, All Rights Reserved. MC017097E

RegalRexnord

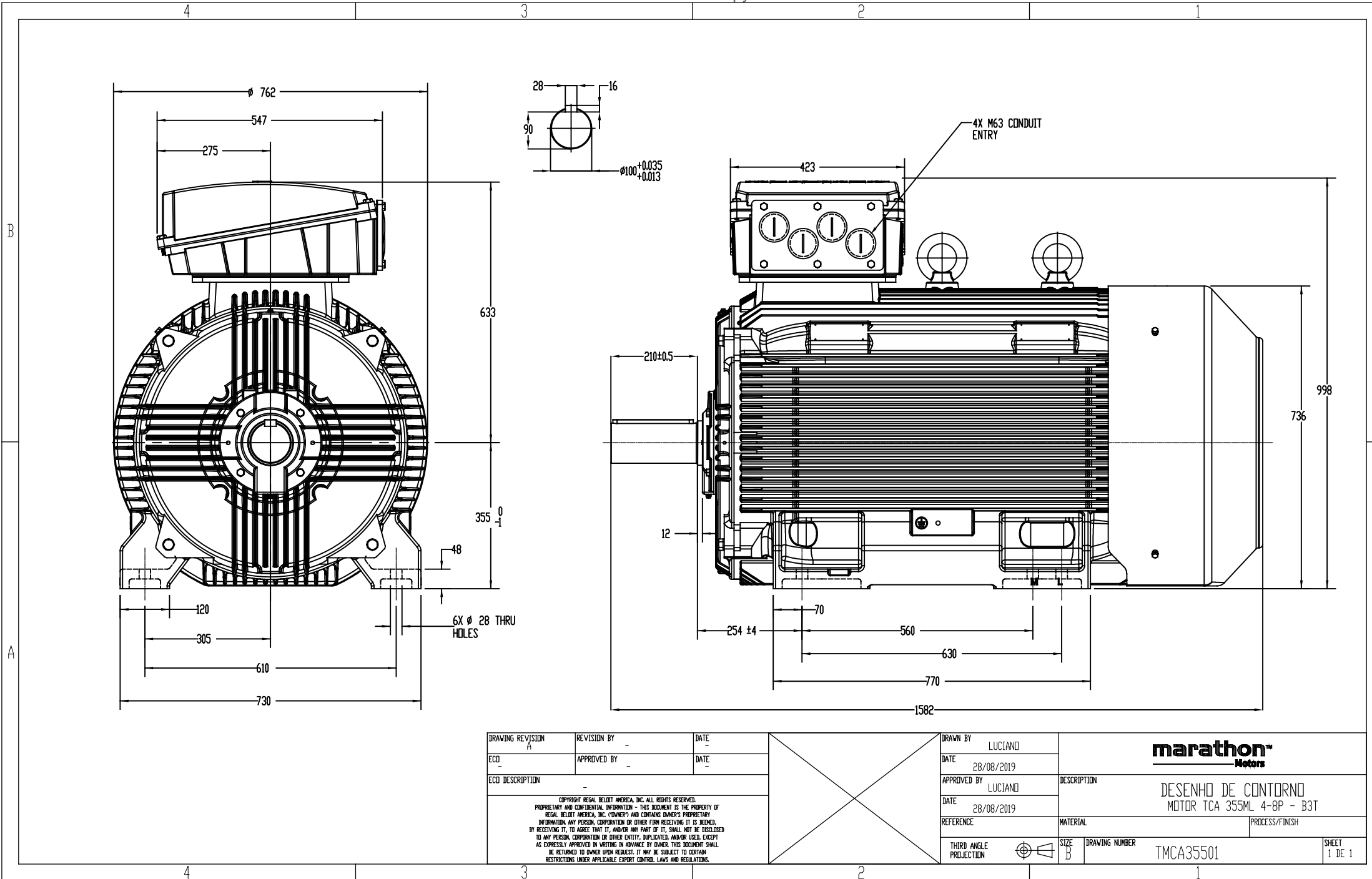
Nameplate Specifications

Output HP	400 Hp	Output KW	300.0 kW
Frequency	60 Hz	Voltage	380 V
Current	555.8 A	Speed	1193 rpm
Service Factor	1.25	Phase	3
Efficiency	95.8 %	Power Factor	0.84
Duty	S1	Insulation Class	F
Frame	355M/L	Enclosure	Totally Enclosed Fan Cooled
Thermal Protection	No Protection	Ambient Temperature	40 °C
Drive End Bearing Size	6322	Opp Drive End Bearing Size	6322
UL	No	CSA	No
CE	No	IP Code	55
Number of Speeds	1		

Technical Specifications

Electrical Type	Squirrel Cage	Starting Method	Direct On Line
Poles	6	Rotation	Clockwise
Mounting	B3	Motor Orientation	Horizontal
Drive End Bearing	C3	Opp Drive End Bearing	C3
Frame Material	Cast	Shaft Type	Keyed
Overall Length	1582 mm	Frame Length	1010 mm
Shaft Diameter	100 mm	Shaft Extension	210 mm
Assembly/Box Mounting	TOP		
Outline Drawing	TMCA35501		

This is an uncontrolled document once printed or downloaded and is subject to change without notice. Date Created:12/02/2022



FORM 14
FORM #6052

BROWNING MANUFACTURING COMPANY, MAYSVILLE, KENTUCKY										12460	
DATE 1-12-68		5TC 86 Cast Iron Sheave				Material- 5TC 86-88 CSTG.					
DR. S. V. JR.						Carton- T115					
CHK'D SA		Mfg. Data				Balance- 1/4 oz.					
DISTRIBUTION						Finish- STD. GRAY					
REVISION		BY	DATE	REVISION		BY	DATE	REVISION		BY	DATE
A ADD DRILL DEPTH & GROOVE LOC.		AP	9-5-68	D REVISED PER CR77-37		RG	2-8-77				
B CSTG WAS 5TC86		AP	7/1/69	E CORR. HUB LWM ECD83-133E		DW	5-26-83				
C Revised Per CR74-170-		JF	9/74	F ECD91-739		KH	4-92				

TOLERANCES
Unless otherwise Specified
FRACTIONAL DIMENSIONS ±1/64
DECIMAL DIMENSIONS ±.005
O.D. ECCENTRICITY .012 T.I.R.
FACE RUNOUT .015 T.I.R.
HUB ECCENTRICITY — T.I.R.

Technical drawing of a Cast Iron Sheave. The drawing shows a cross-section of the sheave with various dimensions and annotations. Key features include:
- Overall width: 5 1/4
- Hub width: 2 3/4 ±1/32
- Groove width: 1 1/4
- Groove depth: 1.563 ±.015, 1.502 WD. KW.
- Groove bottom radius: 2.875 ±.002
- Groove bottom width: 3 3/8
- Groove bottom depth: 4 5/16
- Groove bottom diameter: 9.00 ±.010
- Groove bottom length: 6 13/16
- Groove bottom thickness: 5/8
- Groove bottom material: 5 STD. 34° "C" GROOVES
- Groove bottom material: 3/8-16 N.C. TAP x 7/8 DP
- Groove bottom material: 3 HOLES @ 120°
- Groove bottom material: 5/16" DRILL THRU
- Groove bottom material: BORE TAPER 3/4 PER FT. ON DIA FOR "G2" BUSHING
- Groove bottom material: Stamp "Browning" and "Part No." X
- Groove bottom material: 5 STD. 34° "C" GROOVES
- Groove bottom material: 4 5/16
- Groove bottom material: 2.875 ±.002
- Groove bottom material: 3 3/8
- Groove bottom material: 1.563 ±.015
- Groove bottom material: 1.502 WD. KW.
- Groove bottom material: 9.00 ±.010
- Groove bottom material: 6 13/16
- Groove bottom material: 5/8
- Groove bottom material: 5 STD. 34° "C" GROOVES
- Groove bottom material: 3/8-16 N.C. TAP x 7/8 DP
- Groove bottom material: 3 HOLES @ 120°
- Groove bottom material: 5/16" DRILL THRU
- Groove bottom material: BORE TAPER 3/4 PER FT. ON DIA FOR "G2" BUSHING
- Groove bottom material: Stamp "Browning" and "Part No." X

DWG. NO. 41009463
68X9142-5
3M
F

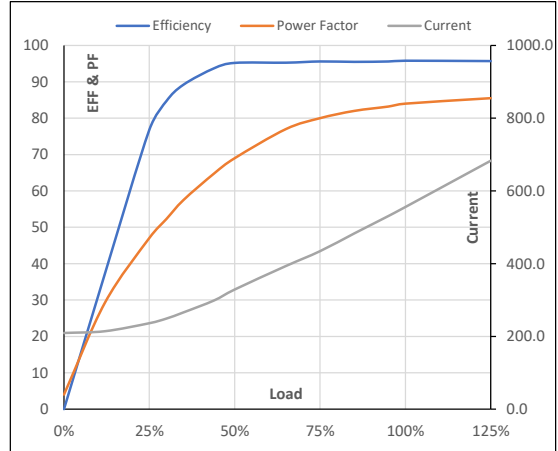
Model No. 1009463

Enclosure	U (V)	Δ / Y Conn	f [Hz]	P [kW]	P [hp]	I [A]	n [RPM]	T [kgm]	T [Nm]	IE Class	Amb [°C]	Duty	Elevation [m]	Inertia [kg-m ²]	Weight [kg]
TEFC	380	Δ	60	300	400	555.8	1193	239.94	2352.98	IR3	40	S1	1000	60.28	2161

Motor Load Data

Load Point		NL	1/4FL	1/2FL	3/4FL	FL	5/4FL
Current	A	209.4	236.3	329.0	434.3	555.8	683.0
Torque	Nm	0.0	594.4	1190.6	1788.6	2353.0	2991.0
Speed	r/min	1200	1198	1196	1195	1193	1191
Efficiency	%	0.0	76.8	95.2	95.6	95.8	95.7
Power Factor	%	4.0	47.0	69.0	80.0	84.0	85.5

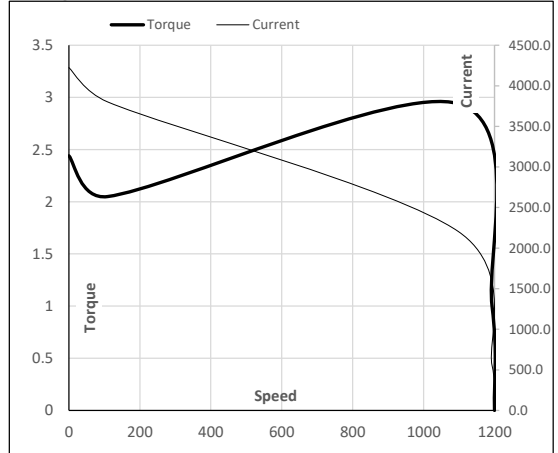
Performance vs Load Chart



Motor Speed Torque Data

Load Point		LR	P-Up	BD	Rated	NL
Speed	r/min	0	109	1098	1193	1200
Current	A	4224.1	3801.7	2205.7	555.8	209.4
Torque	pu	2.4	2.0	2.9	1	0

Starting Characteristics Chart



NOTE Refer data sheet for applicable standard and tolerances on performance parameters

Issued By

Issued Date