

PRODUCT INFORMATION PACKET

marathon®
Motors

Model No: 1009462-BR

Catalog No: 1009462

TerraMAX® Cast Iron Motor, 350 HP, 3 Ph, 60 Hz, 380 V, 1200 RPM, 355M/L Frame, TEFC



Regal and Marathon are trademarks of Regal Rexnord Corporation or one of its affiliated companies.

©2022 Regal Rexnord Corporation, All Rights Reserved. MC017097E

RegalRexnord

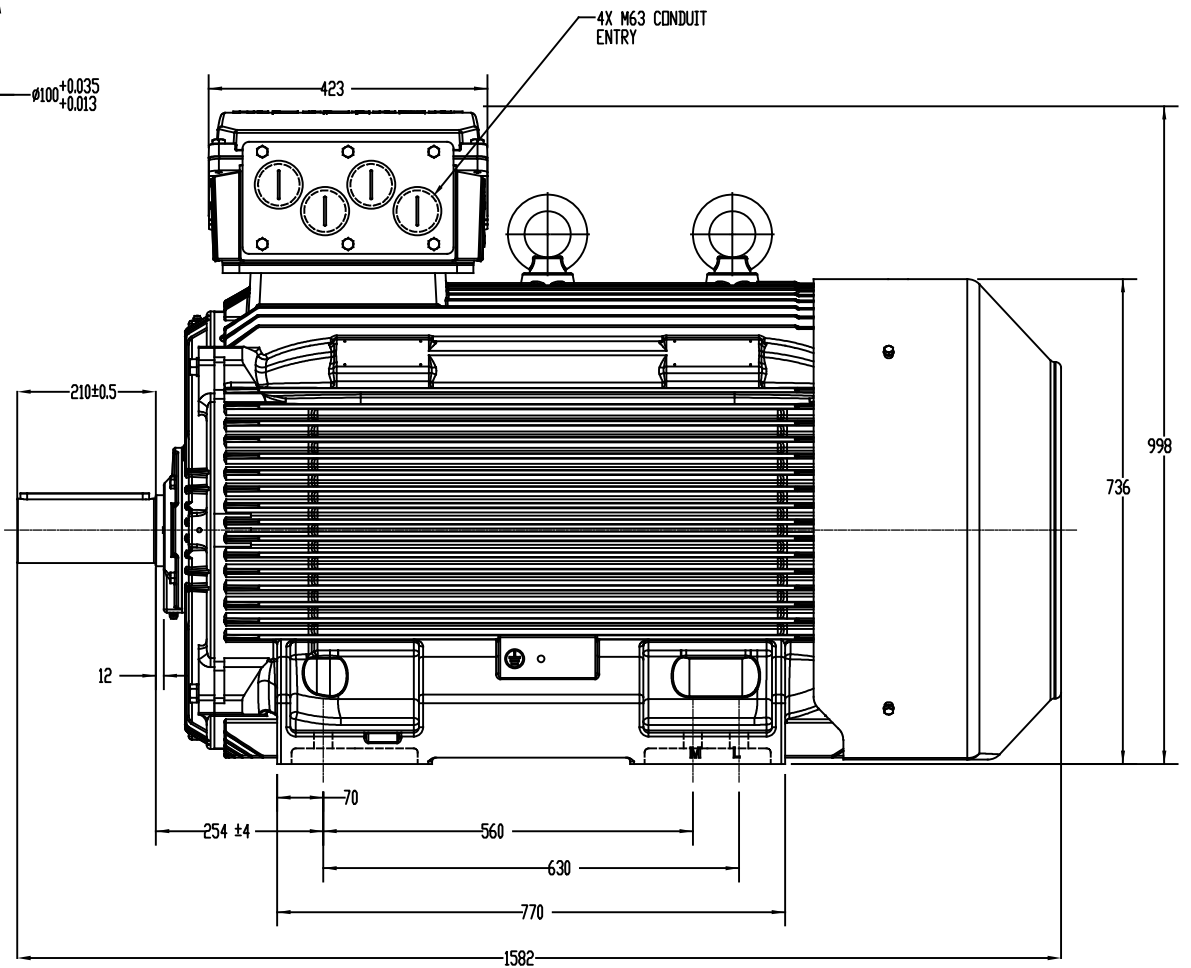
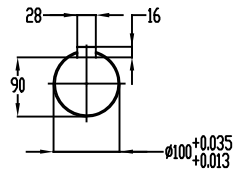
Nameplate Specifications

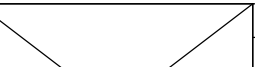


Output HP	350 Hp	Output KW	260.0 kW
Frequency	60 Hz	Voltage	380 V
Current	486.4 A	Speed	1193 rpm
Service Factor	1.25	Phase	3
Efficiency	95.8 %	Power Factor	0.84
Duty	S1	Insulation Class	F
Frame	355M/L	Enclosure	Totally Enclosed Fan Cooled
Thermal Protection	No Protection	Ambient Temperature	40 °C
Drive End Bearing Size	6322	Opp Drive End Bearing Size	6322
UL	No	CSA	No
CE	No	IP Code	55
Number of Speeds	1		

Technical Specifications

Electrical Type	Squirrel Cage	Starting Method	Direct On Line
Poles	6	Rotation	Clockwise
Mounting	B3	Motor Orientation	Horizontal
Drive End Bearing	C3	Opp Drive End Bearing	C3
Frame Material	Cast	Shaft Type	Keyed
Overall Length	1582 mm	Frame Length	1010 mm
Shaft Diameter	100 mm	Shaft Extension	210 mm
Assembly/Box Mounting	TOP		
Outline Drawing	TMCA35501		

This is an uncontrolled document once printed or downloaded and is subject to change without notice. Date Created:12/02/2022



DRAWING REVISION A	REVISION BY -	DATE -		DRAWN BY LUCIANO			
ECO -	APPROVED BY -	DATE -		DATE 28/08/2019	DESCRIPTION DESENHO DE CONTO RNO MOTOR TCA 355ML 4-8P - B3T		
ECO DESCRIPTION -				APPROVED BY LUCIANO			
COPYRIGHT REGAL BELLOTT AMERICA, INC. ALL RIGHTS RESERVED. PROPRIETARY AND CONFIDENTIAL INFORMATION - THIS DOCUMENT IS THE PROPERTY OF REGAL BELLOTT AMERICA, INC. (COMPANY) AND CONTAINS OWNERS' PROPRIETARY INFORMATION. ANY PERSON, CORPORATION OR OTHER FIRM RECEIVING IT IS REQUESTED BY RECEIVING IT, TO AGREE THAT IT, AND/OR ANY PART OF IT, SHALL NOT BE DISCLOSED TO ANY PERSON, CORPORATION OR OTHER ENTITY, DUPLICATED, AND/OR USED, EXCEPT AS EXPRESSLY APPROVED IN WRITING IN ADVANCE BY OWNER. THIS DOCUMENT SHALL BE RETURNED TO OWNER UPON REQUEST. IT MAY BE SUBJECT TO CERTAIN RESTRICTIONS UNDER APPLICABLE EXPORT CONTROL LAWS AND REGULATIONS.				DATE 28/08/2019	MATERIAL PROCESS/FINISH		
				REFERENCE			
			THIRD ANGLE PROJECTION		SIZE B	DRAWING NUMBER TMCA35501	SHEET 1 DE 1

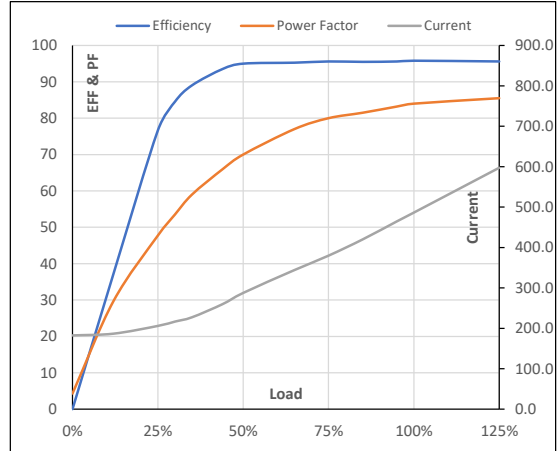
Model No. 1009462

Enclosure	U (V)	Δ / Y Conn	f [Hz]	P [kW]	P [hp]	I [A]	n [RPM]	T [kgm]	T [Nm]	IE Class	Amb [°C]	Duty	Elevation [m]	Inertia [kg-m ²]	Weight [kg]
TEFC	380	Δ	60	260	350	486.4	1193	209.96	2058.98	IR3	40	S1	1000	58.487	2120

Motor Load Data

Load Point		NL	1/4FL	1/2FL	3/4FL	FL	5/4FL
Current	A	182.5	206.0	287.6	379.8	486.4	597.4
Torque	Nm	0.0	520.1	1041.7	1564.9	2059.0	2616.8
Speed	r/min	1200	1198	1196	1195	1193	1191
Efficiency	%	0.0	76.6	95.0	95.6	95.8	95.6
Power Factor	%	4.3	47.7	70.0	80.0	84.0	85.5

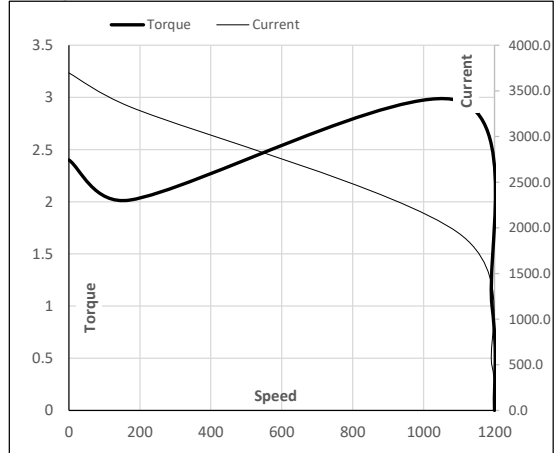
Performance vs Load Chart



Motor Speed Torque Data

Load Point		LR	P-Up	BD	Rated	NL
Speed	r/min	0	171	1098	1193	1200
Current	A	3696.6	3327.0	1945.4	486.4	182.5
Torque	pu	2.4	2.0	3.0	1	0

Starting Characteristics Chart



NOTE Refer data sheet for applicable standard and tolerances on performance parameters

Issued By

Issued Date