

PRODUCT INFORMATION PACKET

marathon®
Motors

Model No: 1009448-BR

Catalog No: 1009448

TerraMAX® Cast Iron Motor, 10 HP, 3 Ph, 60 Hz, 380 V, 1200 RPM, 132S/M Frame, TEFC



Regal and Marathon are trademarks of Regal Rexnord Corporation or one of its affiliated companies.

©2022 Regal Rexnord Corporation, All Rights Reserved. MC017097E

RegalRexnord

Nameplate Specifications

Output HP	10 Hp	Output KW	7.5 kW
Frequency	60 Hz	Voltage	380 V
Current	16.6 A	Speed	1176 rpm
Service Factor	1.25	Phase	3
Efficiency	91 %	Power Factor	0.74
Duty	S1	Insulation Class	F
Frame	132S/M	Enclosure	Totally Enclosed Fan Cooled
Thermal Protection	No Protection	Ambient Temperature	40 °C
Drive End Bearing Size	6308	Opp Drive End Bearing Size	6208
UL	No	CSA	No
CE	No	IP Code	55
Number of Speeds	1		

Technical Specifications

Electrical Type	Squirrel Cage	Starting Method	Direct On Line
Poles	6	Rotation	Clockwise
Mounting	B3	Motor Orientation	Horizontal
Drive End Bearing	Zz C3	Opp Drive End Bearing	Zz C3
Frame Material	Cast	Shaft Type	Keyed
Overall Length	503 mm	Frame Length	240 mm
Shaft Diameter	38 mm	Shaft Extension	80 mm
Assembly/Box Mounting	TOP		
Outline Drawing	0213200587		

This is an uncontrolled document once printed or downloaded and is subject to change without notice. Date Created:12/02/2022

4

3

Uncontrolled Copy

2

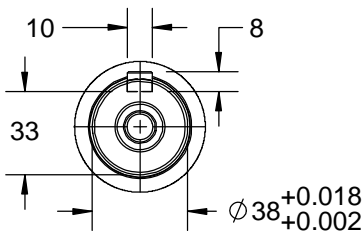
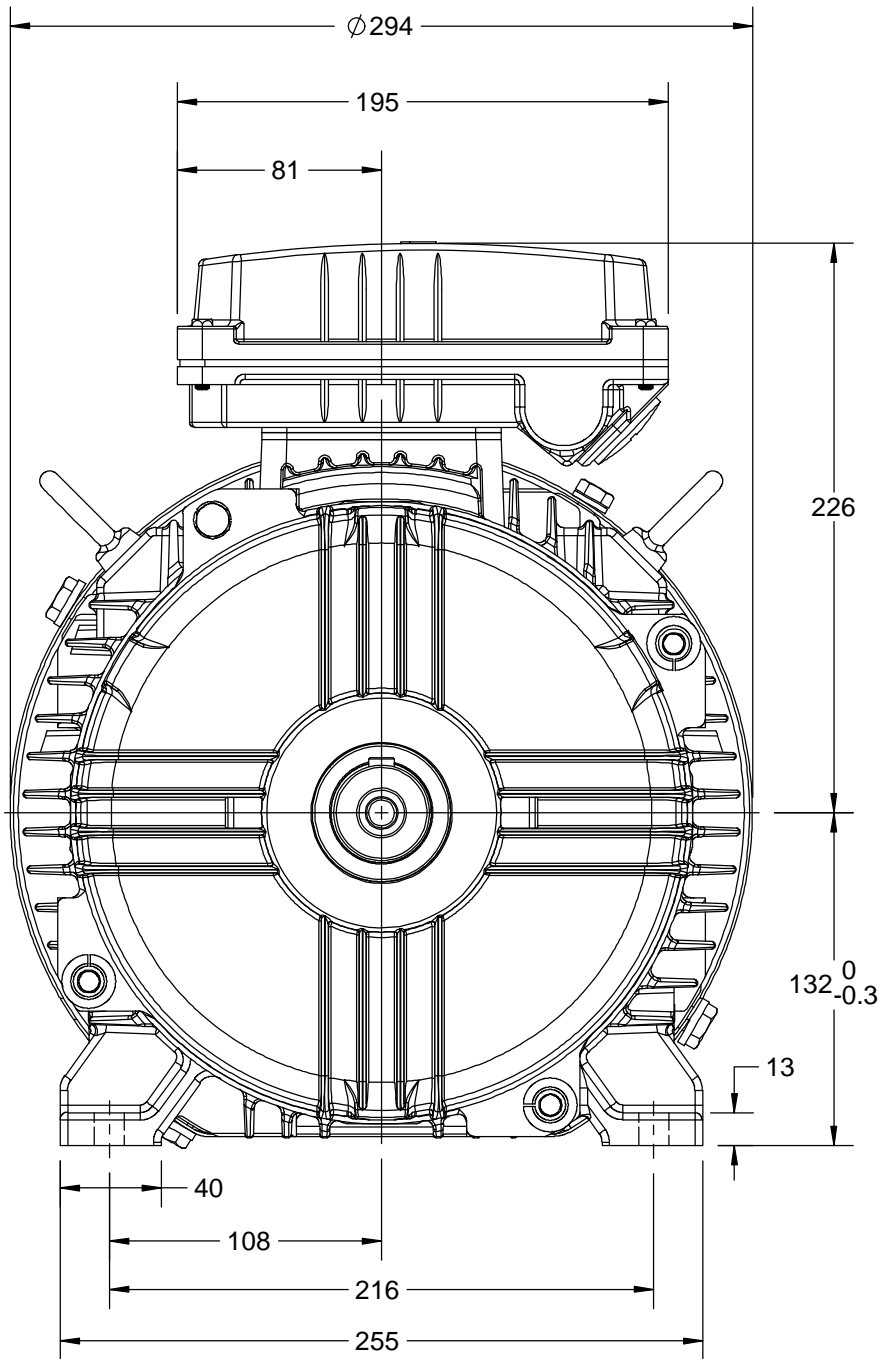
1

B

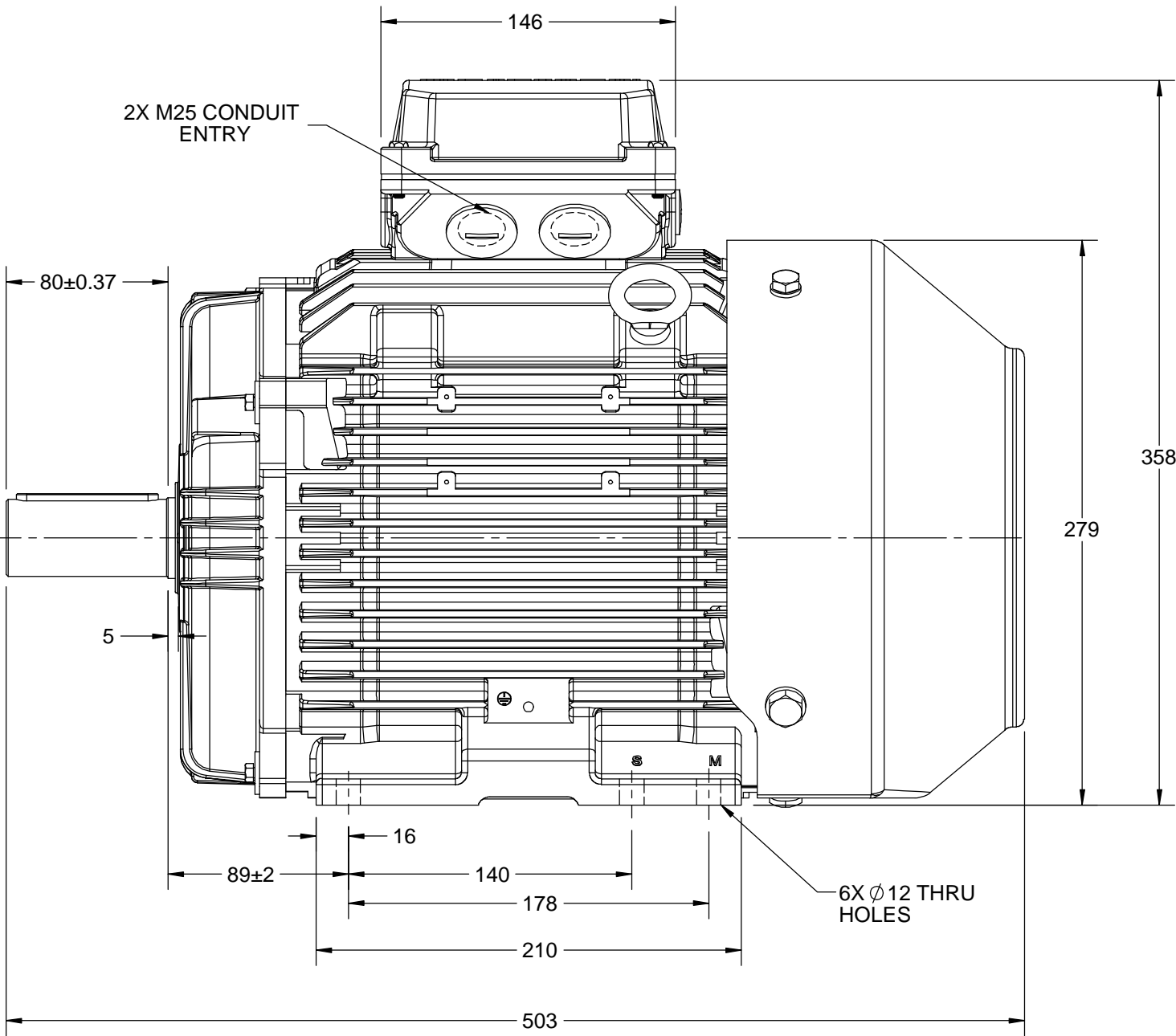
B

A

A



2X M25 CONDUIT ENTRY



DRAWING REVISION C	REVISION BY S.MUDDA	DATE 25/06/2018
ECO ECO-0147359	APPROVED BY JAY	DATE 25/06/2018
ECO DESCRIPTION OUTLINE UPDATED AS PER NEW 3D STRUCTURING		
COPYRIGHT REGAL BELOIT AMERICA, INC. ALL RIGHTS RESERVED. PROPRIETARY AND CONFIDENTIAL INFORMATION - THIS DOCUMENT IS THE PROPERTY OF REGAL BELOIT AMERICA, INC. ("OWNER") AND CONTAINS OWNER'S PROPRIETARY INFORMATION. ANY PERSON, CORPORATION OR OTHER FIRM RECEIVING IT IS DEEMED, BY RECEIVING IT, TO AGREE THAT IT, AND/OR ANY PART OF IT, SHALL NOT BE DISCLOSED TO ANY PERSON, CORPORATION OR OTHER ENTITY, DUPLICATED, AND/OR USED, EXCEPT AS EXPRESSLY APPROVED IN WRITING IN ADVANCE BY OWNER. THIS DOCUMENT SHALL BE RETURNED TO OWNER UPON REQUEST. IT MAY BE SUBJECT TO CERTAIN RESTRICTIONS UNDER APPLICABLE EXPORT CONTROL LAWS AND REGULATIONS.		

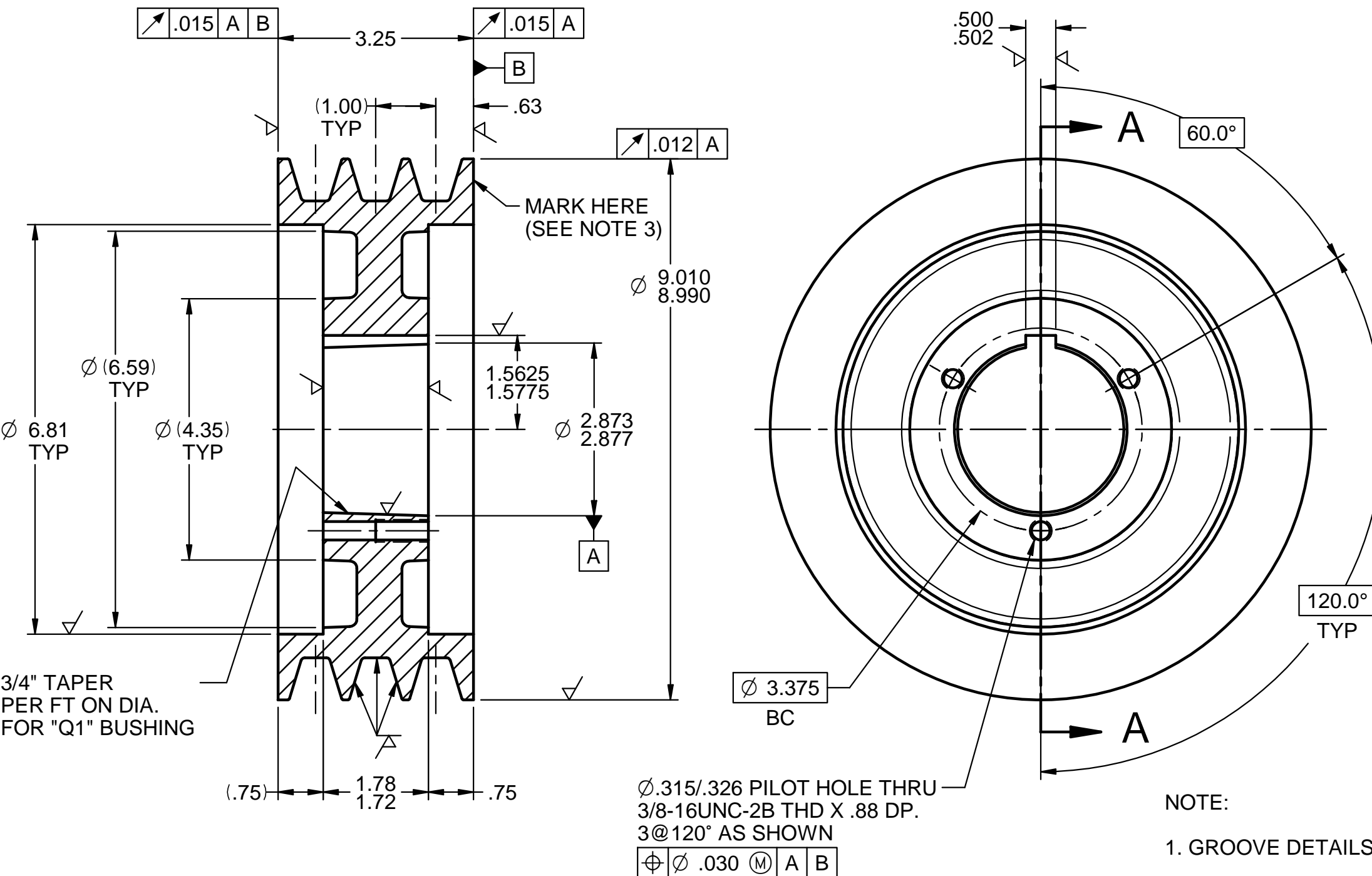
DRAWN BY SMAR			
DATE 05/09/13			
APPROVED BY JAY	DESCRIPTION OUTLINE		
DATE 05/09/13	132 FR.- B3 MTG. MOTOR TYPE TCA/QCA		
REFERENCE	MATERIAL	PROCESS/FINISH	
THIRD ANGLE PROJECTION	SIZE B	DRAWING NUMBER 0213200587	SHEET 1 OF 1

4

3



2

1



SECTION A-A

- NOTE:
- GROOVE DETAILS: 3 STD. 34° "C" GROOVES PER ENG 7.3.9
 - BREAK ALL SHARP CORNERS .03 X 45° MAX. EXCEPT KEYWAY, KEYWAY SHOULD HAVE MINIMAL EDGE BREAK.
 - MARKING : "BROWNING" AND "3TC86"
 - BALANCE: 1/4 OZ @ RIM OD 1.1250 OZ IN

REV	ECN #	REMARKS	CASTING	Unless Otherwise Specified Dimensions are in Inches		<div><div><div>the power of</div><div></div></div><div></div><div>EMERSON</div><div>Industrial Automation</div><div>EPT GEARING & COMPONENTS</div><div>Maysville, KY 41056</div><div>Confidential Property of EPT Gearing & Components</div><div>By accepting this document you agree to the following: This document and the information it contains is the property of EPT Gearing & Components. It must be held in strict confidence and be properly safeguarded by you at all times. It may only be used for the specific purpose that it was loaned to you. It may not be revealed to another party without prior written authorization from EPT Gearing & Components.</div></div>	DWN: S.V. JR.	TITLE "C" SHEAVE 3TC86		
F	08-13897	UPDATED & REDRAWN IN SE	4TC86 88 CSTG (4004511)		DATE: 01/12/68					
			MATERIAL	TOLERANCES	CHK'D: SA		FRAME -	TYPE -	SHEET 1 OF 1	
			---	Dim X.X ± .030	DATE: 01/12/68					
			---	Dim X.XX ± .015	REV: VVK					
			EST. WGT. (LBS.)	Dim X.XXX ± .005	DATE: 11/14/08					
			21.3	Angular Dimensions ± .5°	DO NOT SCALE DRAWING		DRAWING NUMBER 1009448			REV F
			HEAT TREAT	Surface Finish 125✓						

			FINISH COATING	- Dimensions in () are for reference purposes only						
			STD GRAY	- Remove All Flashing						
			PER ENG 7.1.1.2							

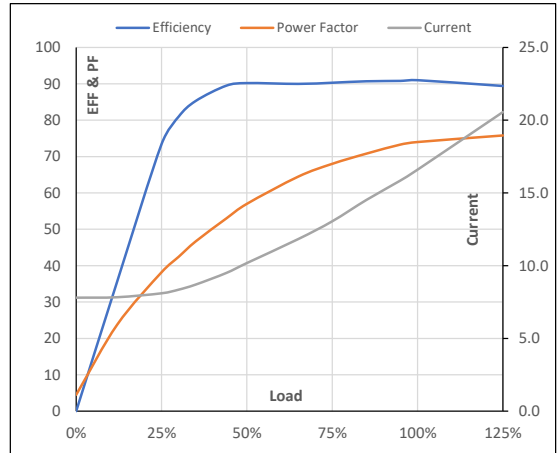
Model No. 1009448

Enclosure	U (V)	Δ / Y Conn	f [Hz]	P [kW]	P [hp]	I [A]	n [RPM]	T [kgm]	T [Nm]	IE Class	Amb [°C]	Duty	Elevation [m]	Inertia [kg-m ²]	Weight [kg]
TEFC	380	Δ	60	7.5	10	16.6	1176	6.09	59.68	IR3	40	S1	1000	0.314	95

Motor Load Data

Load Point		NL	1/4FL	1/2FL	3/4FL	FL	5/4FL
Current	A	7.8	8.1	10.2	13.1	16.6	20.6
Torque	Nm	0.0	14.9	30.0	45.2	59.7	76.4
Speed	r/min	1200	1194	1189	1183	1176	1167
Efficiency	%	0.0	73.4	90.2	90.3	91.0	89.4
Power Factor	%	4.5	38.2	57.0	68.0	74.0	75.8

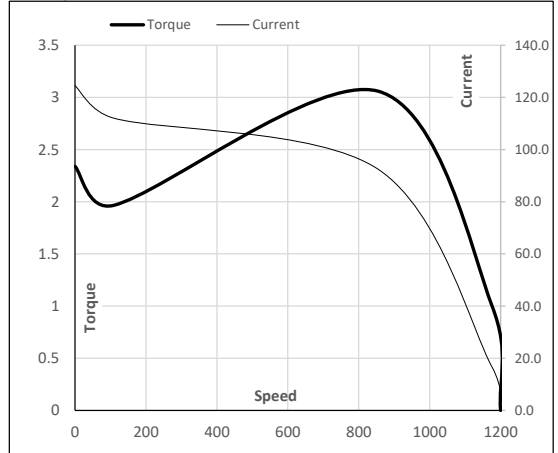
Performance vs Load Chart



Motor Speed Torque Data

Load Point		LR	P-Up	BD	Rated	NL
Speed	r/min	0	109	854	1176	1200
Current	A	124.5	112.1	92.5	16.6	7.8
Torque	pu	2.3	2.0	3.1	1	0

Starting Characteristics Chart



NOTE Refer data sheet for applicable standard and tolerances on performance parameters

Issued By
Issued Date