

PRODUCT INFORMATION PACKET

marathon®
Motors

Model No: 1009445-BR

Catalog No: 1009445

TerraMAX® Cast Iron Motor, 4 HP, 3 Ph, 60 Hz, 380 V, 1200 RPM, 112M2 Frame, TEFC



Regal and Marathon are trademarks of Regal Rexnord Corporation or one of its affiliated companies.
©2022 Regal Rexnord Corporation, All Rights Reserved. MC017097E

RegalRexnord

Nameplate Specifications

Output HP	4 Hp	Output KW	3.0 kW
Frequency	60 Hz	Voltage	380 V
Current	6.9 A	Speed	1169 rpm
Service Factor	1.25	Phase	3
Efficiency	89.5 %	Power Factor	0.73
Duty	S1	Insulation Class	F
Frame	112M2	Enclosure	Totally Enclosed Fan Cooled
Thermal Protection	No Protection	Ambient Temperature	40 °C
Drive End Bearing Size	6306	Opp Drive End Bearing Size	6206
UL	No	CSA	No
CE	No	IP Code	55
Number of Speeds	1		

Technical Specifications

Electrical Type	Squirrel Cage	Starting Method	Direct On Line
Poles	6	Rotation	Clockwise
Mounting	B3	Motor Orientation	Horizontal
Drive End Bearing	Zz C3	Opp Drive End Bearing	Zz C3
Frame Material	Cast	Shaft Type	Keyed
Overall Length	475 mm	Frame Length	250 mm
Shaft Diameter	28 mm	Shaft Extension	60 mm
Assembly/Box Mounting	TOP		
Outline Drawing	0211200534		

This is an uncontrolled document once printed or downloaded and is subject to change without notice. Date Created:12/02/2022

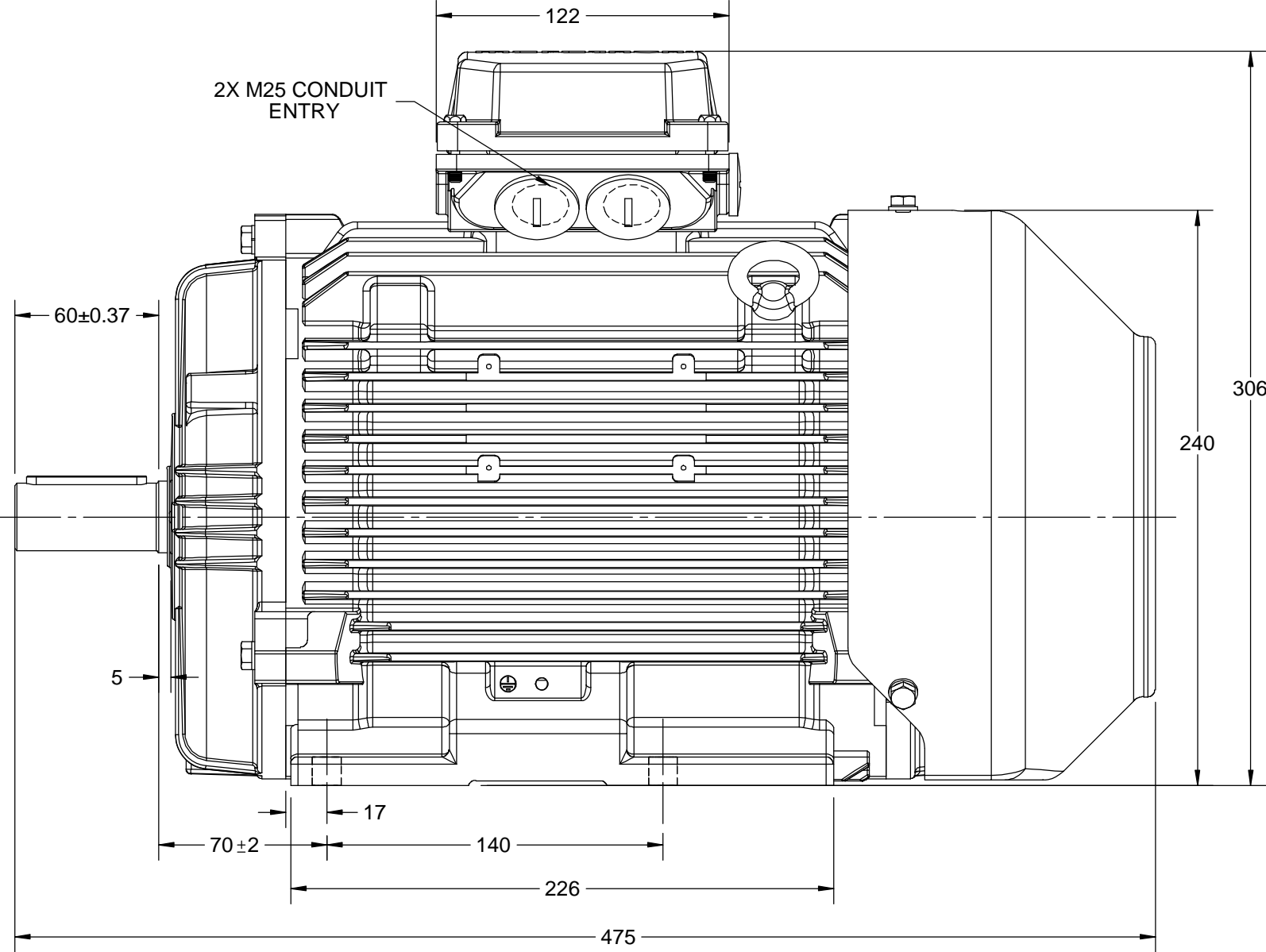
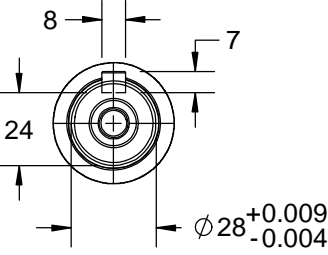
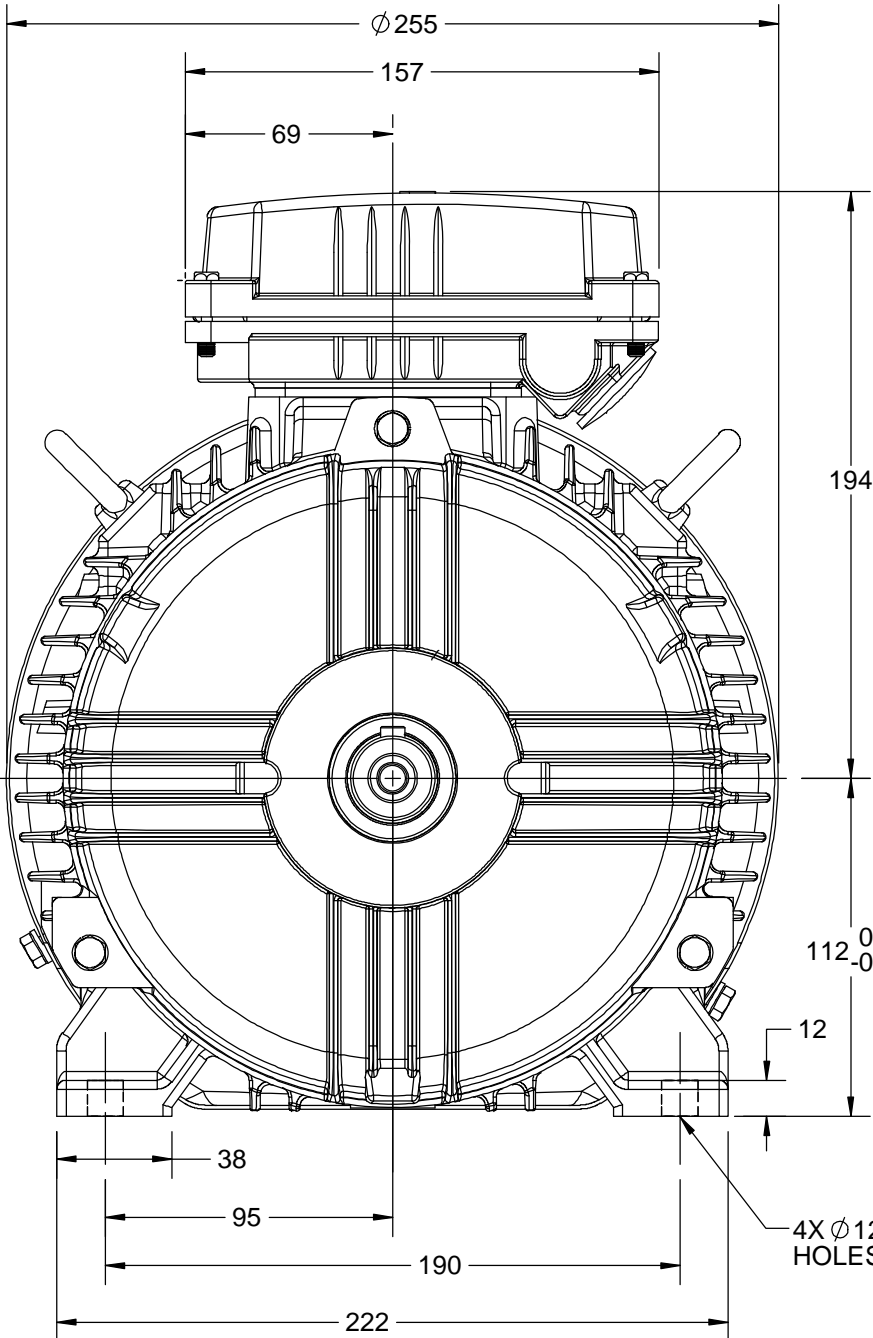
OUTLINE

B

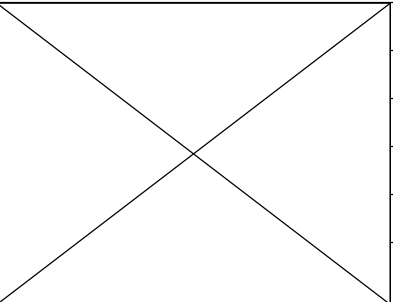
B

A

A



DRAWING REVISION B	REVISION BY NIV	DATE 19/09/2017
ECO ECO-0131516	APPROVED BY JAY	DATE 19/09/2017
ECO DESCRIPTION UPDATED DRAWING COPYRIGHT REGAL BELOIT AMERICA, INC. ALL RIGHTS RESERVED. PROPRIETARY AND CONFIDENTIAL INFORMATION - THIS DOCUMENT IS THE PROPERTY OF REGAL BELOIT AMERICA, INC. ("OWNER") AND CONTAINS OWNER'S PROPRIETARY INFORMATION. ANY PERSON, CORPORATION OR OTHER FIRM RECEIVING IT IS DEEMED, BY RECEIVING IT, TO AGREE THAT IT, AND/OR ANY PART OF IT, SHALL NOT BE DISCLOSED TO ANY PERSON, CORPORATION OR OTHER ENTITY, DUPLICATED, AND/OR USED, EXCEPT AS EXPRESSLY APPROVED IN WRITING IN ADVANCE BY OWNER. THIS DOCUMENT SHALL BE RETURNED TO OWNER UPON REQUEST. IT MAY BE SUBJECT TO CERTAIN RESTRICTIONS UNDER APPLICABLE EXPORT CONTROL LAWS AND REGULATIONS.		



DRAWN BY NIV	marathon™ Motors		
DATE 17/07/17			
APPROVED BY JAY	DESCRIPTION OUTLINE		
DATE 17/07/17	112 FR.- B3 MTG. MOTOR TYPE: TCA/QCA		
REFERENCE	MATERIAL	PROCESS/FINISH	
THIRD ANGLE PROJECTION	SIZE B	DRAWING NUMBER 0211200534	SHEET 1 OF 1

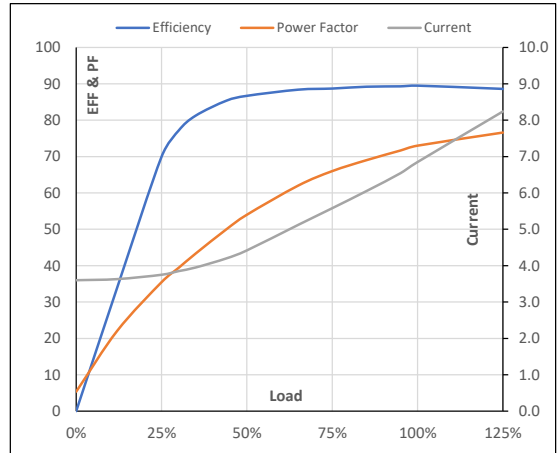
Model No. 1009445

Enclosure	U (V)	Δ / Y Conn	f [Hz]	P [kW]	P [hp]	I [A]	n [RPM]	T [kgm]	T [Nm]	IE Class	Amb [°C]	Duty	Elevation [m]	Inertia [kg-m ²]	Weight [kg]
TEFC	380	Δ	60	3	4	6.9	1169	2.45	24.01	IR3	40	S1	1000	0.114	66

Motor Load Data

Load Point		NL	1/4FL	1/2FL	3/4FL	FL	5/4FL
Current	A	3.6	3.8	4.4	5.6	6.9	8.2
Torque	Nm	0.0	6.0	12.0	18.2	24.0	30.7
Speed	r/min	1200	1192	1185	1178	1169	1160
Efficiency	%	0.0	69.9	86.7	88.7	89.5	88.6
Power Factor	%	5.4	35.5	54.0	66.0	73.0	76.6

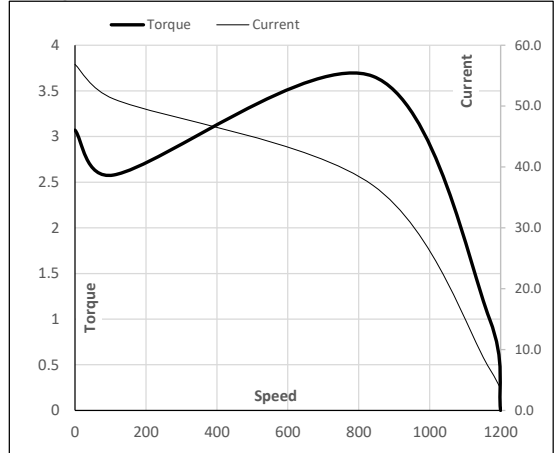
Performance vs Load Chart



Motor Speed Torque Data

Load Point		LR	P-Up	BD	Rated	NL
Speed	r/min	0	109	840	1169	1200
Current	A	56.9	51.2	37.0	6.9	3.6
Torque	pu	3.1	2.6	3.7	1	0

Starting Characteristics Chart



NOTE Refer data sheet for applicable standard and tolerances on performance parameters

Issued By

Issued Date