

PRODUCT INFORMATION PACKET

marathon®
Motors

Model No: 1009443-BR

Catalog No: 1009443

TerraMAX® Cast Iron Motor, 2 HP, 3 Ph, 60 Hz, 380 V, 1200 RPM, 100L1 Frame, TEFC



Regal and Marathon are trademarks of Regal Rexnord Corporation or one of its affiliated companies.
©2022 Regal Rexnord Corporation, All Rights Reserved. MC017097E

RegalRexnord

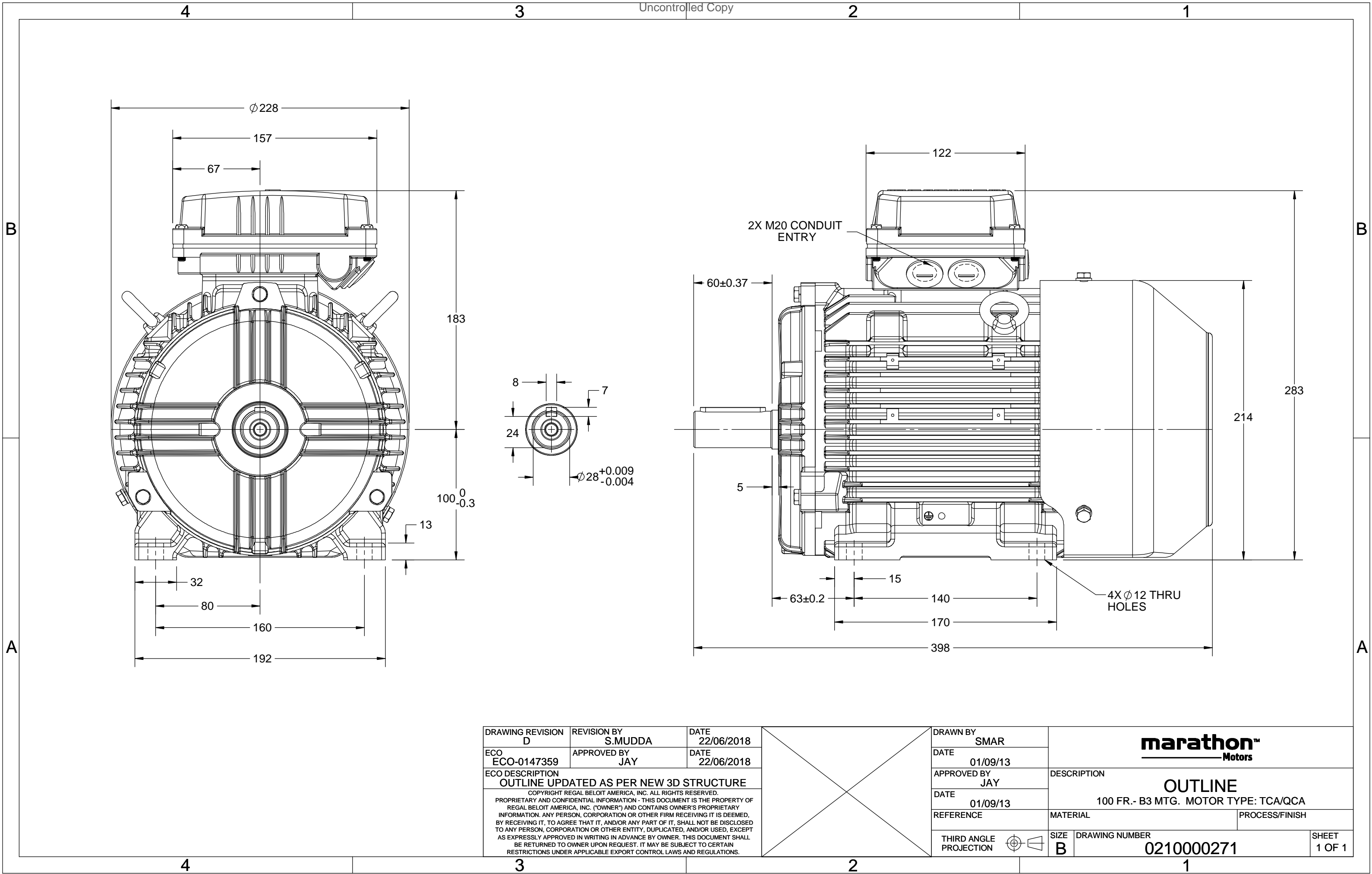
Nameplate Specifications

Output HP	2 Hp	Output KW	1.5 kW
Frequency	60 Hz	Voltage	380 V
Current	3.5 A	Speed	1173 rpm
Service Factor	1.25	Phase	3
Efficiency	86.5 %	Power Factor	0.74
Duty	S1	Insulation Class	F
Frame	100L1	Enclosure	Totally Enclosed Fan Cooled
Thermal Protection	No Protection	Ambient Temperature	40 °C
Drive End Bearing Size	6206	Opp Drive End Bearing Size	6206
UL	No	CSA	No
CE	No	IP Code	55
Number of Speeds	1		

Technical Specifications

Electrical Type	Squirrel Cage	Starting Method	Direct On Line
Poles	6	Rotation	Clockwise
Mounting	B3	Motor Orientation	Horizontal
Drive End Bearing	Zz C3	Opp Drive End Bearing	Zz C3
Frame Material	Cast	Shaft Type	Keyed
Overall Length	398 mm	Frame Length	200 mm
Shaft Diameter	28 mm	Shaft Extension	60 mm
Assembly/Box Mounting	TOP		
Outline Drawing	0210000271		

This is an uncontrolled document once printed or downloaded and is subject to change without notice. Date Created:12/02/2022



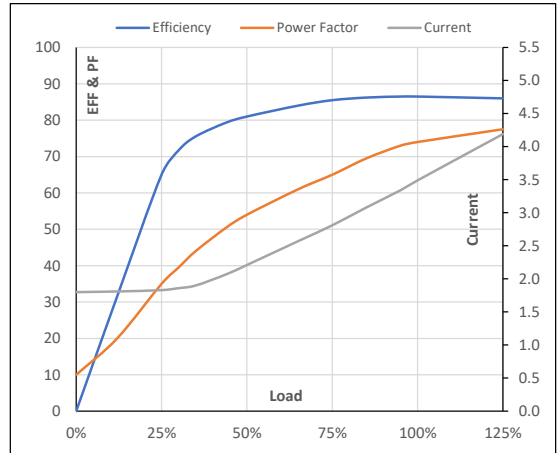
Model No. 1009443

Enclosure	U (V)	Δ / Y Conn	f [Hz]	P [kW]	P [hp]	I [A]	n [RPM]	T [kgm]	T [Nm]	IE Class	Amb [°C]	Duty	Elevation [m]	Inertia [kg-m ²]	Weight [kg]
TEFC	380	Δ	60	1.5	2	3.5	1173	1.22	11.96	IR3	40	S1	1000	0.084	43

Motor Load Data

Load Point		NL	1/4FL	1/2FL	3/4FL	FL	5/4FL
Current	A	1.8	1.8	2.2	2.8	3.5	4.2
Torque	Nm	0.0	3.0	6.0	9.1	12.0	15.3
Speed	r/min	1200	1193	1186	1180	1173	1164
Efficiency	%	0.0	65.0	81.0	85.5	86.5	86.0
Power Factor	%	10.0	35.0	54.0	65.0	74.0	77.5

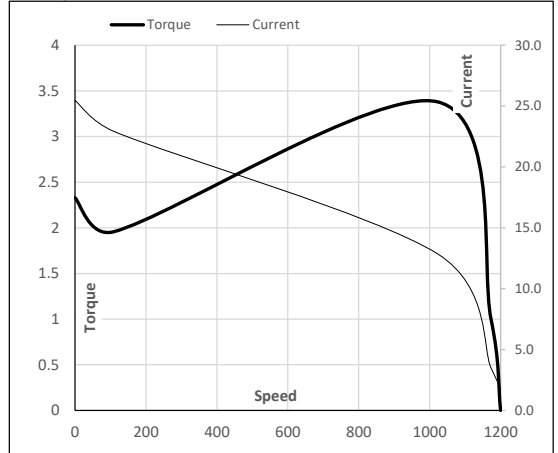
Performance vs Load Chart



Motor Speed Torque Data

Load Point		LR	P-Up	BD	Rated	NL
Speed	r/min	0	109	1022	1173	1200
Current	A	25.5	22.9	12.9	3.5	1.8
Torque	pu	2.3	2.0	3.4	1	0

Starting Characteristics Chart



NOTE Refer data sheet for applicable standard and tolerances on performance parameters

Issued By

Issued Date