

PRODUCT INFORMATION PACKET

marathon®
Motors

Model No: 1009440-BR

Catalog No: 1009440

TerraMAX® Cast Iron Motor, 500 HP, 3 Ph, 60 Hz, 380 V, 1800 RPM, 355M/L Frame, TEFC



Regal and Marathon are trademarks of Regal Rexnord Corporation or one of its affiliated companies.
©2022 Regal Rexnord Corporation, All Rights Reserved. MC017097E

RegalRexnord

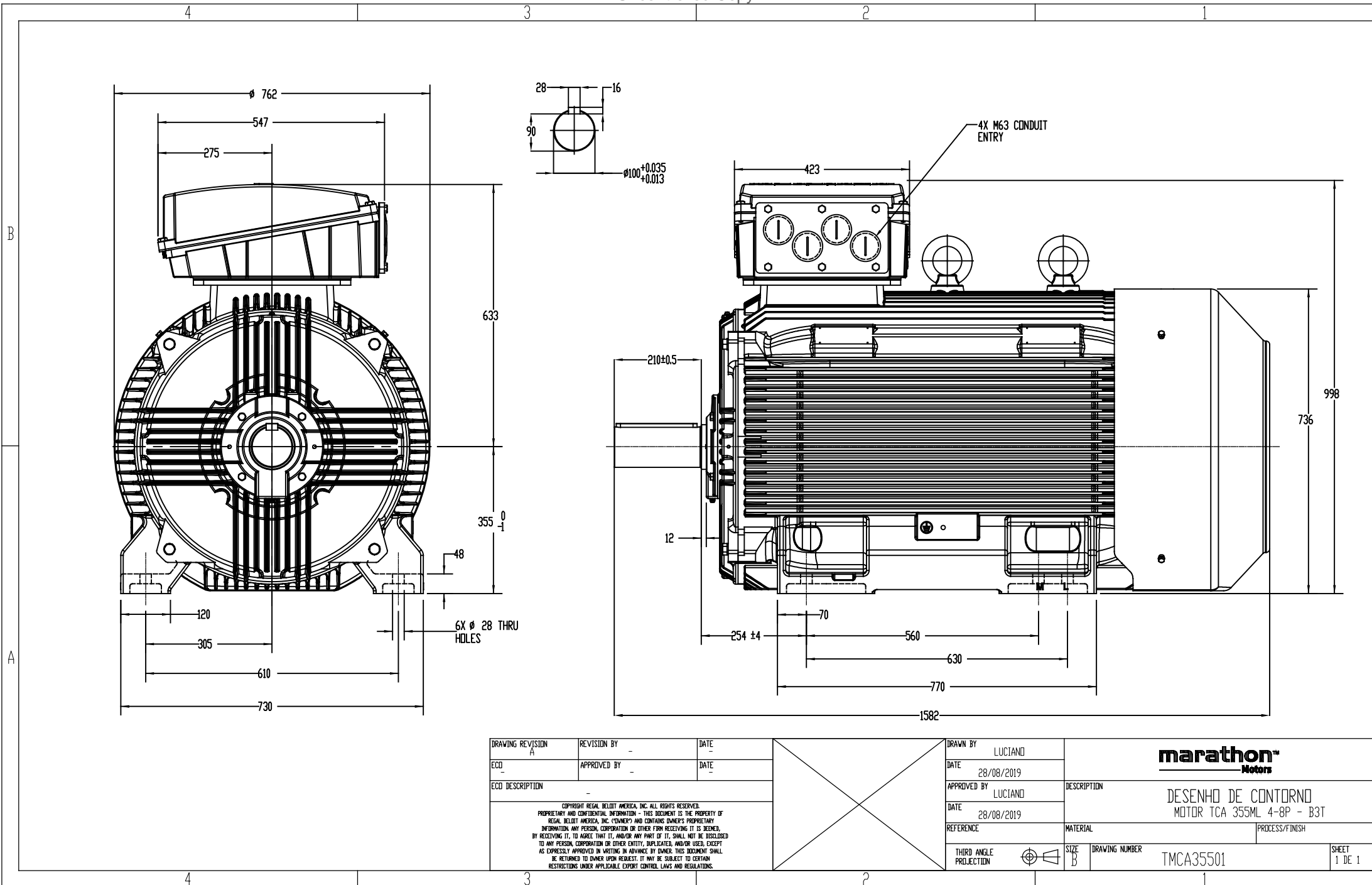
Nameplate Specifications

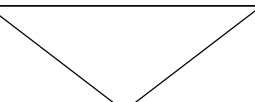


Output HP	500 Hp	Output KW	370.0 kW
Frequency	60 Hz	Voltage	380 V
Current	6.5 A	Speed	1790 rpm
Service Factor	1.15	Phase	3
Efficiency	96.2 %	Power Factor	0.9
Duty	S1	Insulation Class	F
Frame	355M/L	Enclosure	Totally Enclosed Fan Cooled
Thermal Protection	No Protection	Ambient Temperature	40 °C
Drive End Bearing Size	6322	Opp Drive End Bearing Size	6322
UL	No	CSA	No
CE	No	IP Code	55
Number of Speeds	1		

Technical Specifications

Electrical Type	Squirrel Cage	Starting Method	Direct On Line
Poles	4	Rotation	Clockwise
Mounting	B3	Motor Orientation	Horizontal
Drive End Bearing	C3	Opp Drive End Bearing	C3
Frame Material	Cast	Shaft Type	Keyed
Overall Length	1582 mm	Frame Length	1010 mm
Shaft Diameter	100 mm	Shaft Extension	210 mm
Assembly/Box Mounting	TOP		
Outline Drawing	TMCA35501		

This is an uncontrolled document once printed or downloaded and is subject to change without notice. Date Created:12/02/2022



DRAWING REVISION A	REVISION BY -	DATE -		DRAWN BY LUCIANO			
ECD -	APPROVED BY -	DATE -		DATE 28/08/2019			
ECD DESCRIPTION -				APPROVED BY LUCIANO	DESCRIPTION DESENHO DE CONTORNO MOTOR TCA 355ML 4-8P - B3T		
COPYRIGHT REGAL BELLET AMERICA, INC. ALL RIGHTS RESERVED. PROPRIETARY AND CONFIDENTIAL INFORMATION - THIS DOCUMENT IS THE PROPERTY OF REGAL BELLET AMERICA, INC. ("OWNER") AND CONTAINS OWNER'S PROPRIETARY INFORMATION. ANY PERSON, CORPORATION OR OTHER FIRM RECEIVING IT IS DEEMED, BY RECEIVING IT, TO AGREE THAT IT, AND/OR ANY PART OF IT, SHALL NOT BE DISCLOSED TO ANY PERSON, CORPORATION OR OTHER ENTITY, DUPLICATED, AND/OR USED, EXCEPT AS EXPRESSLY APPROVED IN WRITING IN ADVANCE BY OWNER. THIS DOCUMENT SHALL BE RETURNED TO OWNER UPON REQUEST. IT MAY BE SUBJECT TO CERTAIN RESTRICTIONS UNDER APPLICABLE EXPORT CONTROL LAWS AND REGULATIONS.				DATE 28/08/2019			
				REFERENCE		MATERIAL	PROCESS/FINISH
				THIRD ANGLE PROJECTION 	SIZE B	DRAWING NUMBER TMCA35501	SHEET 1 DE 1

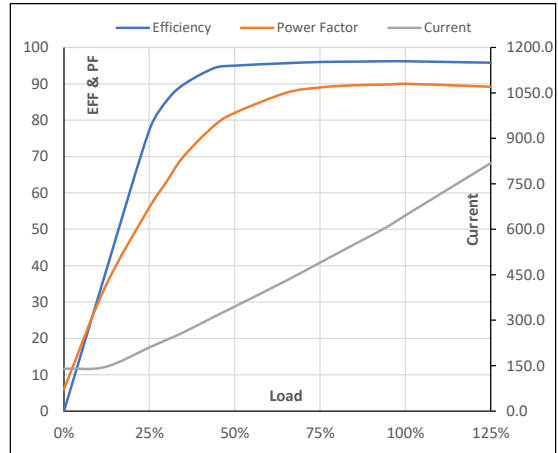
Model No. 1009440

Enclosure	U (V)	Δ / Y Conn	f [Hz]	P [kW]	P [hp]	I [A]	n [RPM]	T [kgm]	T [Nm]	IE Class	Amb [°C]	Duty	Elevation [m]	Inertia [kg-m ²]	Weight [kg]
TEFC	380	Δ	60	370	500	645.8	1790	199.86	1960.00	IR3	40	S1	1000	46.09	2048

Motor Load Data

Load Point		NL	1/4FL	1/2FL	3/4FL	FL	5/4FL
Current	A	140.0	210.0	345.0	490.0	645.8	818.2
Torque	Nm	0.0	495.2	991.8	1489.8	1960.0	2491.4
Speed	r/min	1800	1797	1795	1792	1790	1786
Efficiency	%	0.0	77.3	95.0	96.0	96.2	95.8
Power Factor	%	6.0	56.0	82.0	89.0	90.0	89.2

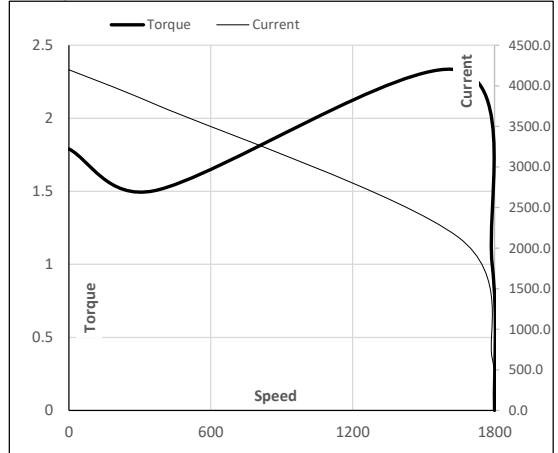
Performance vs Load Chart



Motor Speed Torque Data

Load Point		LR	P-Up	BD	Rated	NL
Speed	r/min	0	360	1647	1790	1800
Current	A	4197.7	3777.9	2134.0	645.8	140.0
Torque	pu	1.8	1.5	2.3	1	0

Starting Characteristics Chart



NOTE Refer data sheet for applicable standard and tolerances on performance parameters

Issued By

Issued Date