

# PRODUCT INFORMATION PACKET

**marathon®**  
Motors

Model No: 1009420-BR

Catalog No: 1009420

TerraMAX® Cast Iron Motor, 1 HP, 3 Ph, 60 Hz, 380 V, 1800 RPM, 80M1 Frame, TEFC



Regal and Marathon are trademarks of Regal Rexnord Corporation or one of its affiliated companies.

©2022 Regal Rexnord Corporation, All Rights Reserved. MC017097E

**RegalRexnord**

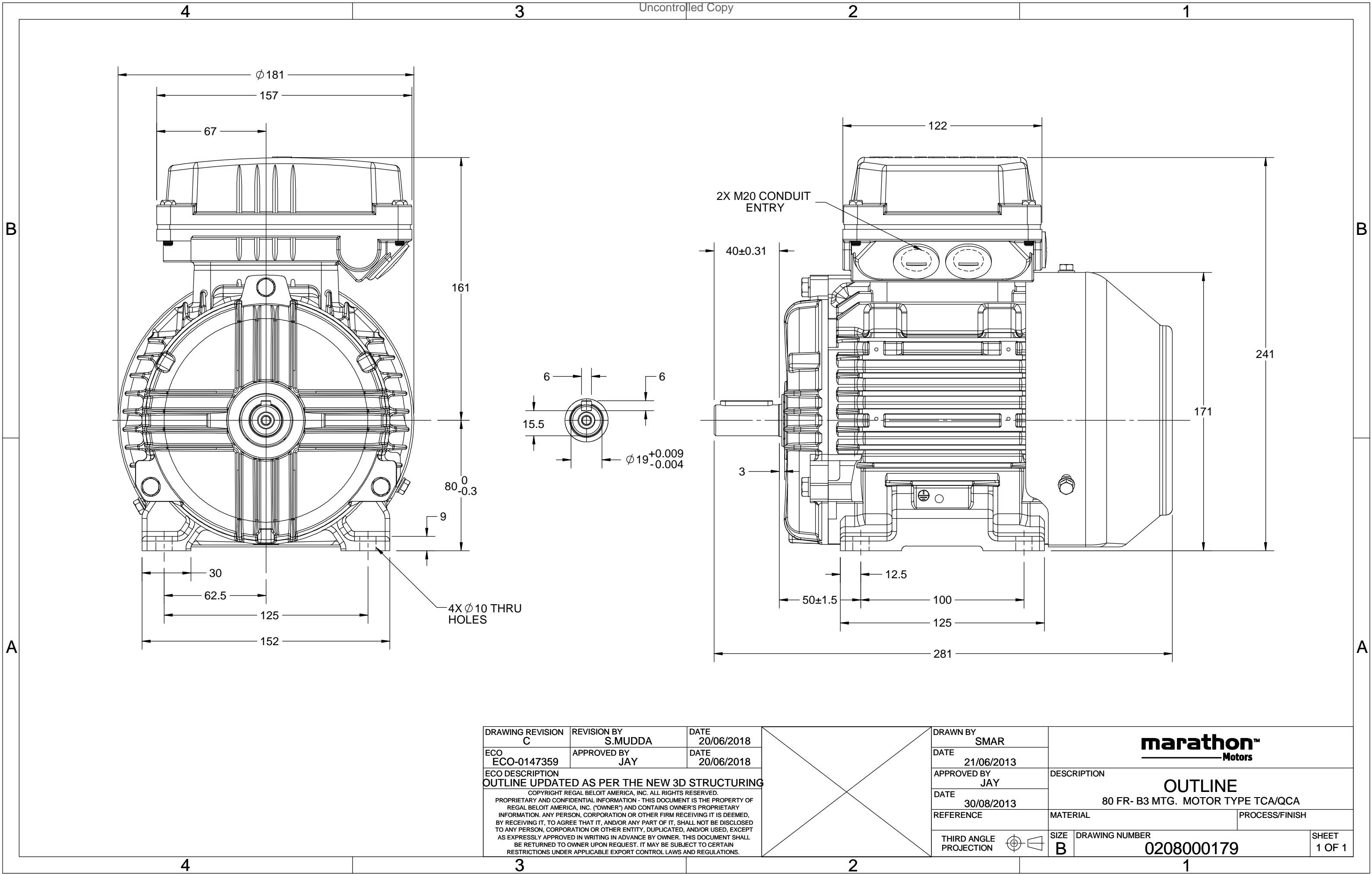
### Nameplate Specifications

Output HP	1 Hp	Output KW	0.75 kW
Frequency	60 Hz	Voltage	380 V
Current	6.2 A	Speed	1735 rpm
Service Factor	1.25	Phase	3
Efficiency	83 %	Power Factor	0.78
Duty	S1	Insulation Class	F
Frame	80M1	Enclosure	Totally Enclosed Fan Cooled
Thermal Protection	No Protection	Ambient Temperature	40 °C
Drive End Bearing Size	6204	Opp Drive End Bearing Size	6204
UL	No	CSA	No
CE	No	IP Code	55
Number of Speeds	1		

### Technical Specifications

Electrical Type	Squirrel Cage	Starting Method	Direct On Line
Poles	4	Rotation	Clockwise
Mounting	B3	Motor Orientation	Horizontal
Drive End Bearing	Zz C3	Opp Drive End Bearing	Zz C3
Frame Material	Cast	Shaft Type	Keyed
Overall Length	281 mm	Frame Length	140 mm
Shaft Diameter	19 mm	Shaft Extension	40 mm
Assembly/Box Mounting	TOP		
Outline Drawing	0208000179		

This is an uncontrolled document once printed or downloaded and is subject to change without notice. Date Created:12/02/2022



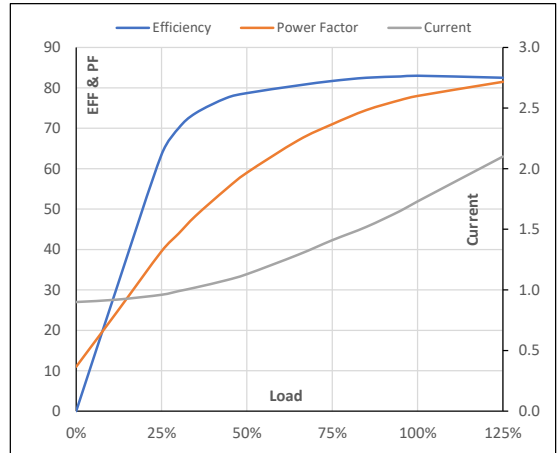
Model No. 1009420

Enclosure	U (V)	Δ / Y Conn	f [Hz]	P [kW]	P [hp]	I [A]	n [RPM]	T [kgm]	T [Nm]	IE Class	Amb [°C]	Duty	Elevation [m]	Inertia [kg-m <sup>2</sup> ]	Weight [kg]
TEFC	380	Δ	60	0.75	1	1.7	1735	0.41	4.05	IR3	40	S1	1000	0.0092	21

**Motor Load Data**

Load Point		NL	1/4FL	1/2FL	3/4FL	FL	5/4FL
Current	A	0.9	1.0	1.1	1.4	1.7	2.1
Torque	Nm	0.0	1.0	2.0	3.1	4.0	83.1
Speed	r/min	1800	1783	1768	1752	1735	1714
Efficiency	%	0.0	63.5	78.7	81.7	83.0	82.5
Power Factor	%	11.0	39.5	59.0	71.0	78.0	81.5

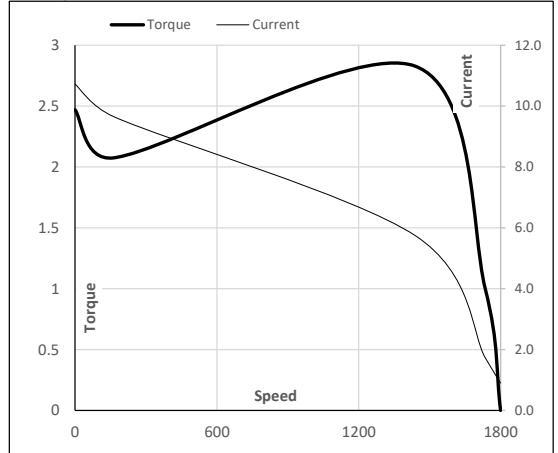
**Performance vs Load Chart**



**Motor Speed Torque Data**

Load Point		LR	P-Up	BD	Rated	NL
Speed	r/min	0	164	1436	1735	1800
Current	A	10.7	9.7	5.8	1.7	0.9
Torque	pu	2.5	2.1	2.8	1	0

**Starting Characteristics Chart**



**NOTE** Refer data sheet for applicable standard and tolerances on performance parameters

Issued By

Issued Date