

# PRODUCT INFORMATION PACKET

**marathon®**  
Motors

Model No: 1009399-BR

Catalog No: 1009399

TerraMAX® Cast Iron Motor, 25 HP, 3 Ph, 60 Hz, 380 V, 3600 RPM, 160M Frame, TEFC



Regal and Marathon are trademarks of Regal Rexnord Corporation or one of its affiliated companies.

©2022 Regal Rexnord Corporation, All Rights Reserved. MC017097E

**RegalRexnord**

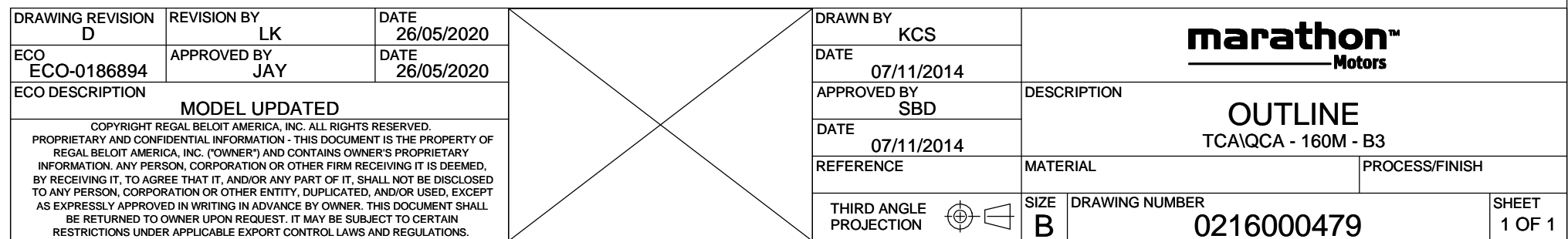
### Nameplate Specifications

|                        |               |                            |                             |
|------------------------|---------------|----------------------------|-----------------------------|
| Output HP              | 25 Hp         | Output KW                  | 18.5 kW                     |
| Frequency              | 60 Hz         | Voltage                    | 380 V                       |
| Current                | 33.8 A        | Speed                      | 3547 rpm                    |
| Service Factor         | 1.25          | Phase                      | 3                           |
| Efficiency             | 91.7 %        | Power Factor               | 0.9                         |
| Duty                   | S1            | Insulation Class           | F                           |
| Frame                  | 160M          | Enclosure                  | Totally Enclosed Fan Cooled |
| Thermal Protection     | No Protection | Ambient Temperature        | 40 °C                       |
| Drive End Bearing Size | 6309          | Opp Drive End Bearing Size | 6209                        |
| UL                     | No            | CSA                        | No                          |
| CE                     | No            | IP Code                    | 55                          |
| Number of Speeds       | 1             |                            |                             |

### Technical Specifications

|                       |               |                       |                |
|-----------------------|---------------|-----------------------|----------------|
| Electrical Type       | Squirrel Cage | Starting Method       | Direct On Line |
| Poles                 | 2             | Rotation              | Clockwise      |
| Mounting              | B3            | Motor Orientation     | Horizontal     |
| Drive End Bearing     | Zz C3         | Opp Drive End Bearing | Zz C3          |
| Frame Material        | Cast          | Shaft Type            | Keyed          |
| Overall Length        | 622 mm        | Frame Length          | 254 mm         |
| Shaft Diameter        | 42 mm         | Shaft Extension       | 110 mm         |
| Assembly/Box Mounting | TOP           |                       |                |
| Outline Drawing       | 0216000479    |                       |                |

This is an uncontrolled document once printed or downloaded and is subject to change without notice. Date Created:12/02/2022



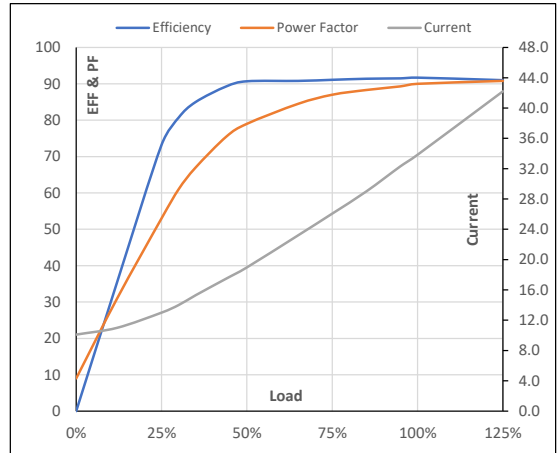
Model No. 1009399

| Enclosure | U<br>(V) | Δ / Y<br>Conn | f<br>[Hz] | P<br>[kW] | P<br>[hp] | I<br>[A] | n<br>[RPM] | T<br>[kgm] | T<br>[Nm] | IE<br>Class | Amb<br>[°C] | Duty | Elevation<br>[m] | Inertia<br>[kg-m <sup>2</sup> ] | Weight<br>[kg] |
|-----------|----------|---------------|-----------|-----------|-----------|----------|------------|------------|-----------|-------------|-------------|------|------------------|---------------------------------|----------------|
| TEFC      | 380      | Δ             | 60        | 18.5      | 25        | 33.8     | 3547       | 5.05       | 49.49     | IR3         | 40          | S1   | 1000             | 0.31                            | 151            |

**Motor Load Data**

| Load Point   |       | NL   | 1/4FL | 1/2FL | 3/4FL | FL   | 5/4FL |
|--------------|-------|------|-------|-------|-------|------|-------|
| Current      | A     | 10.1 | 13.0  | 19.0  | 26.1  | 33.8 | 42.2  |
| Torque       | Nm    | 0.0  | 12.4  | 24.9  | 37.5  | 49.5 | 63.0  |
| Speed        | r/min | 3600 | 3587  | 3574  | 3561  | 3547 | 3531  |
| Efficiency   | %     | 0.0  | 73.2  | 90.7  | 91.1  | 91.7 | 91.0  |
| Power Factor | %     | 9.0  | 53.0  | 79.0  | 87.0  | 90.0 | 90.8  |

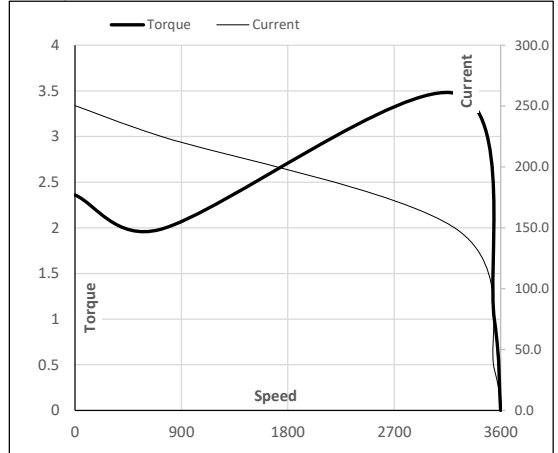
**Performance vs Load Chart**



**Motor Speed Torque Data**

| Load Point |       | LR    | P-Up  | BD    | Rated | NL   |
|------------|-------|-------|-------|-------|-------|------|
| Speed      | r/min | 0     | 720   | 3228  | 3547  | 3600 |
| Current    | A     | 250.4 | 225.4 | 148.9 | 33.8  | 10.1 |
| Torque     | pu    | 2.4   | 2.0   | 3.5   | 1     | 0    |

**Starting Characteristics Chart**



**NOTE** Refer data sheet for applicable standard and tolerances on performance parameters

Issued By

Issued Date