

# PRODUCT INFORMATION PACKET

**marathon®**  
Motors

Model No: 1009398-BR

Catalog No: 1009398

9.2kW, General Purpose Low Voltage IEC Motors, 3 phase, 2 Pole, 380V, B3T, 60Hz, 91%, 132S/M Frame, TEFC  
Cast Iron Motors



Regal and Marathon are trademarks of Regal Rexnord Corporation or one of its affiliated companies.

©2021 Regal Rexnord Corporation, All Rights Reserved. MC017097E

**RegalRexnord**

### Nameplate Specifications

Output HP	12.50 Hp	Output KW	9.2 kW
Frequency	60 Hz	Voltage	380 V
Current	17.4 A	Speed	3525 rpm
Service Factor	1.25	Phase	3
Efficiency	91 %	Power Factor	0.88
Duty	S1	Insulation Class	F
Frame	132S/M	Enclosure	Totally Enclosed Fan Cooled
Ambient Temperature	40 °C	Drive End Bearing Size	6308
Opp Drive End Bearing Size	6208	UL	No
CSA	No	CE	No
IP Code	55	Number of Speeds	1

### Technical Specifications

Electrical Type	Squirrel Cage	Starting Method	Direct On Line
Poles	2	Rotation	Clockwise
Mounting	B3	Motor Orientation	Horizontal
Drive End Bearing	Zz C3	Opp Drive End Bearing	Zz C3
Frame Material	Cast	Shaft Type	Keyed
Overall Length	465 mm	Frame Length	202 mm
Shaft Diameter	38 mm	Shaft Extension	80 mm
Assembly/Box Mounting	TOP		
Outline Drawing	0213200587		

This is an uncontrolled document once printed or downloaded and is subject to change without notice. Date Created:11/29/2021

4

3

Uncontrolled Copy

2

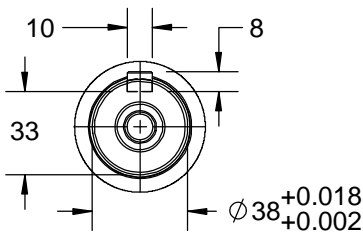
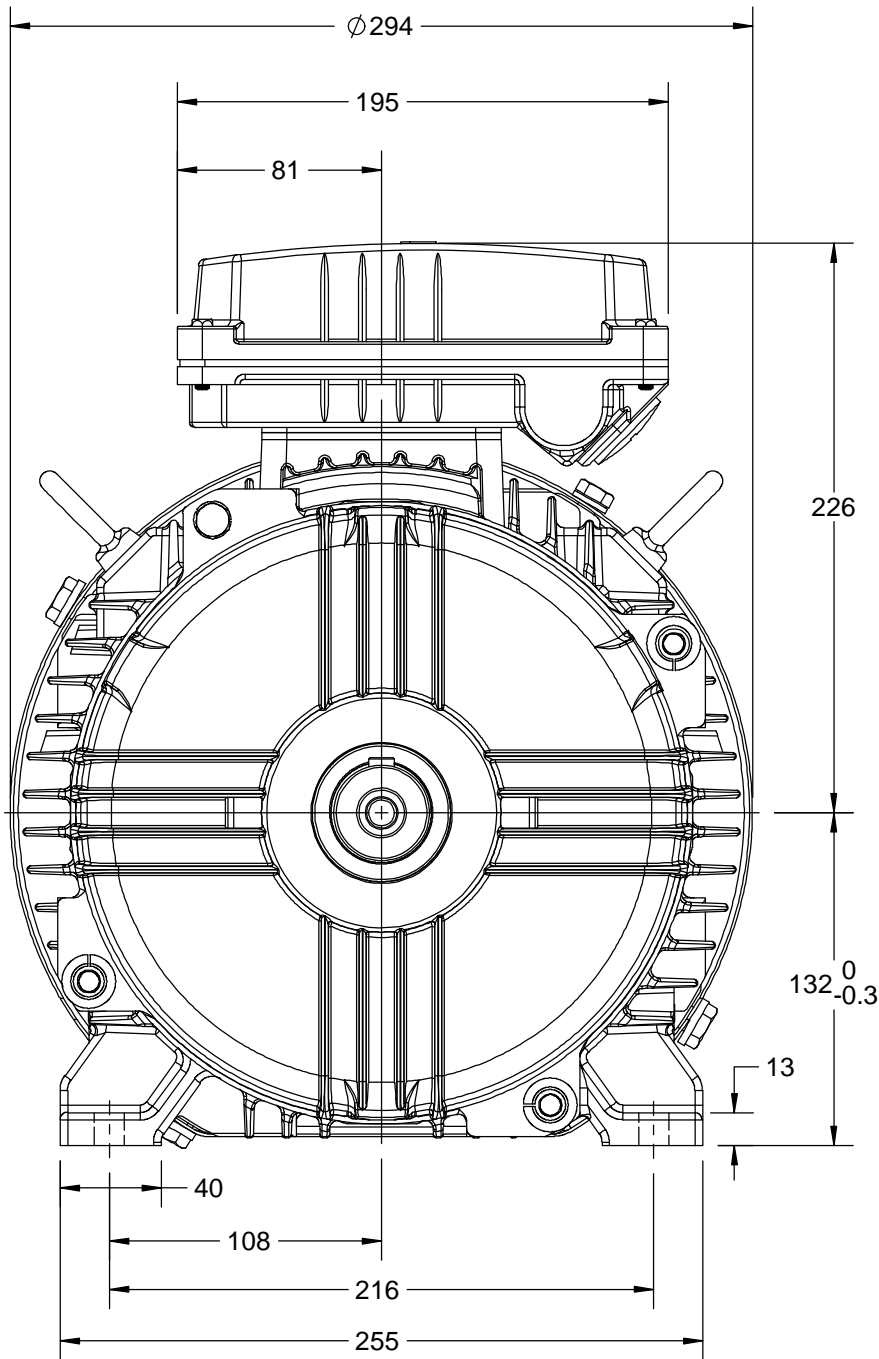
1

B

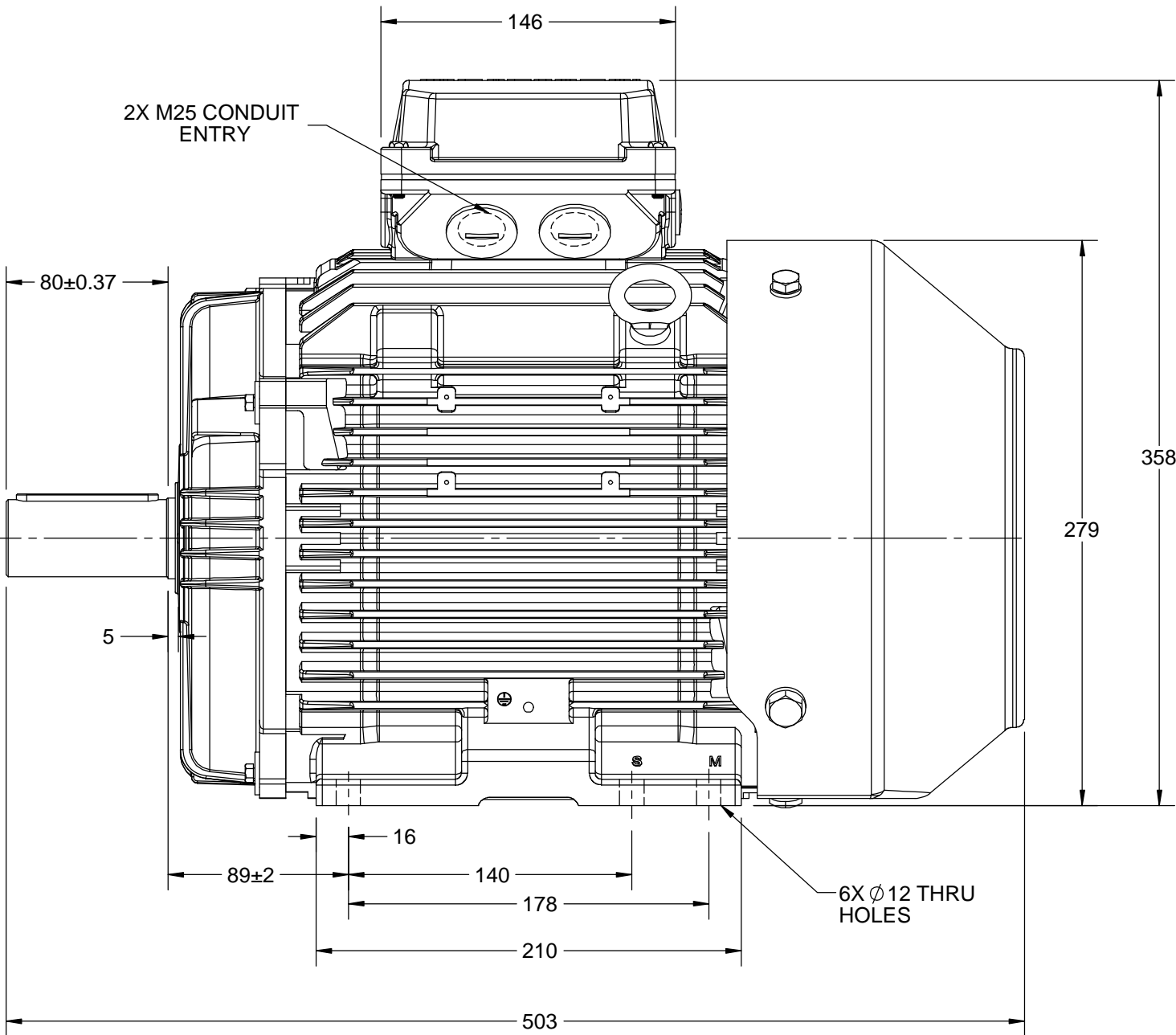
B

A

A



2X M25 CONDUIT ENTRY



DRAWING REVISION C	REVISION BY S.MUDDA	DATE 25/06/2018
ECO ECO-0147359	APPROVED BY JAY	DATE 25/06/2018
ECO DESCRIPTION OUTLINE UPDATED AS PER NEW 3D STRUCTURING		
COPYRIGHT REGAL BELOIT AMERICA, INC. ALL RIGHTS RESERVED. PROPRIETARY AND CONFIDENTIAL INFORMATION - THIS DOCUMENT IS THE PROPERTY OF REGAL BELOIT AMERICA, INC. ("OWNER") AND CONTAINS OWNER'S PROPRIETARY INFORMATION. ANY PERSON, CORPORATION OR OTHER FIRM RECEIVING IT IS DEEMED, BY RECEIVING IT, TO AGREE THAT IT, AND/OR ANY PART OF IT, SHALL NOT BE DISCLOSED TO ANY PERSON, CORPORATION OR OTHER ENTITY, DUPLICATED, AND/OR USED, EXCEPT AS EXPRESSLY APPROVED IN WRITING IN ADVANCE BY OWNER. THIS DOCUMENT SHALL BE RETURNED TO OWNER UPON REQUEST. IT MAY BE SUBJECT TO CERTAIN RESTRICTIONS UNDER APPLICABLE EXPORT CONTROL LAWS AND REGULATIONS.		

DRAWN BY SMAR			
DATE 05/09/13			
APPROVED BY JAY	DESCRIPTION OUTLINE		
DATE 05/09/13	132 FR.- B3 MTG. MOTOR TYPE TCA/QCA		
REFERENCE	MATERIAL	PROCESS/FINISH	
THIRD ANGLE PROJECTION	SIZE B	DRAWING NUMBER 0213200587	SHEET 1 OF 1

4

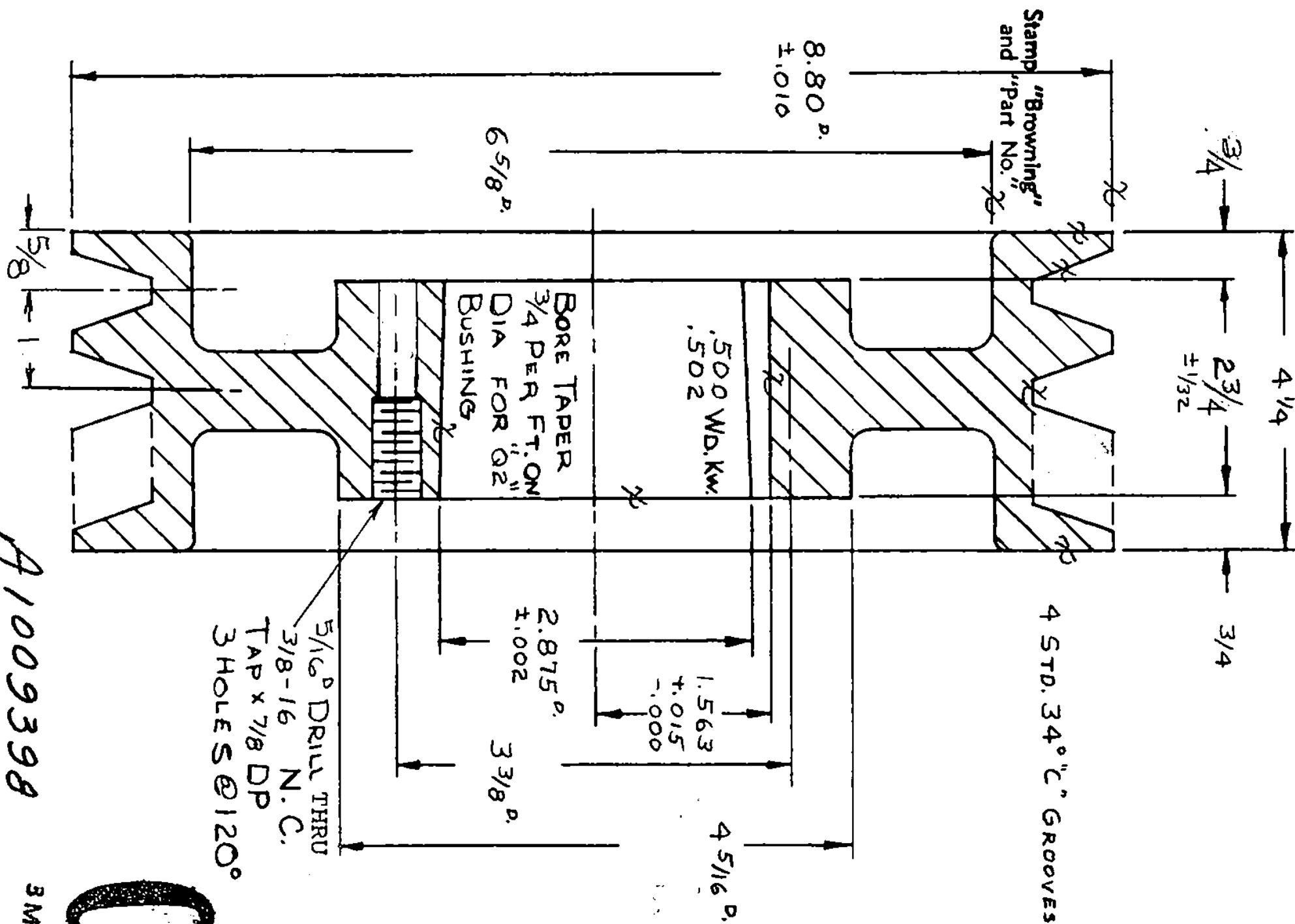
3

2

1

FORM 14  
FORM #6052

BROWNING MANUFACTURING COMPANY, MAYSVILLE, KENTUCKY				12425			
DATE 1-12-68		4 TC 84 Cast Iron Sheave		Material- 4 TC 82-84 CSTG.			
DR. S.V. JR.				Carton-			
CHK'D SA		Mfg. Data		Balance- 1/4 oz.			
DISTRIBUTION				Finish- STD. GRAY			
REVISION		BY	DATE	REVISION		BY	DATE
A ADD DRILL DEPTH & GR. LOC.		SA	9-12-68	D REVISED PER CR 77-37		RT	2-8-77
B CSTG WAS 4TC84		AP	7-1-69	E CORR. HUB LGTH ECO 83-133E		RT	5-26-83
C Revised Per CR 74-170		JH	9/74	F ECO 88-23		RT	8-30-88
REVISION		BY	DATE	REVISION		BY	DATE



**TOLERANCES**  
Unless otherwise Specified  
FRACTIONAL DIMENSIONS ±1/64  
DECIMAL DIMENSIONS ±.005  
O.D. ECCENTRICITY .012 T.I.R.  
FACE RUNOUT .015 T.I.R.  
HUB ECCENTRICITY — T.I.R.

DWG. NO. 68X9141-4

41009398

3M



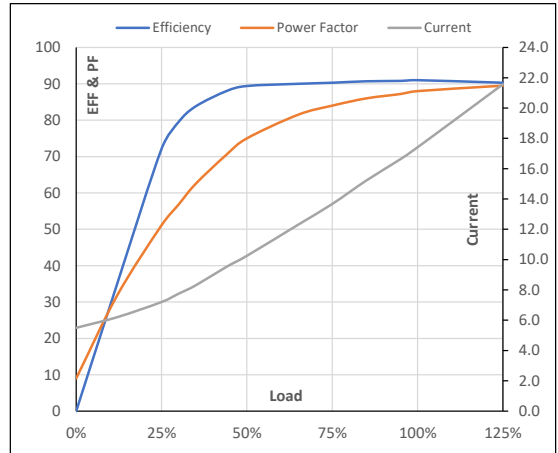
Model No. 1009398

Enclosure	U (V)	Δ / Y Conn	f [Hz]	P [kW]	P [hp]	I [A]	n [RPM]	T [kgm]	T [Nm]	IE Class	Amb [°C]	Duty	Elevation [m]	Inertia [kg-m <sup>2</sup> ]	Weight [kg]
TEFC	380	Δ	60	9.2	13	17.4	3525	2.54	24.89	IR3	40	S1	1000	0.0796	77

**Motor Load Data**

Load Point		NL	1/4FL	1/2FL	3/4FL	FL	5/4FL
Current	A	5.5	7.2	10.3	13.7	17.4	21.6
Torque	Nm	0.0	6.2	12.5	18.8	24.9	31.8
Speed	r/min	3600	3581	3563	3545	3525	3504
Efficiency	%	0.0	72.1	89.4	90.3	91.0	90.3
Power Factor	%	9.0	51.1	75.0	84.0	88.0	89.5

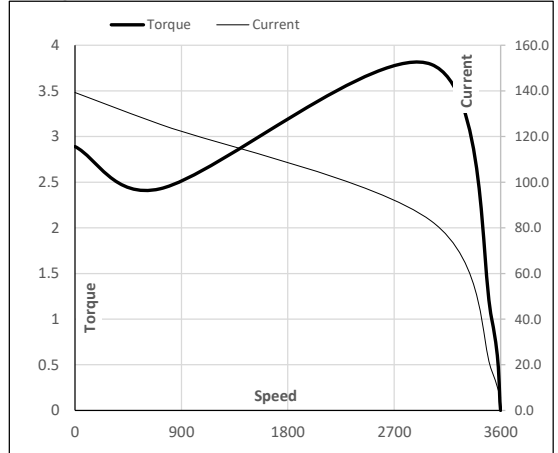
**Performance vs Load Chart**



**Motor Speed Torque Data**

Load Point		LR	P-Up	BD	Rated	NL
Speed	r/min	0	720	3014	3525	3600
Current	A	139.3	125.4	83.0	17.4	5.5
Torque	pu	2.9	2.4	3.8	1	0

**Starting Characteristics Chart**



**NOTE** Refer data sheet for applicable standard and tolerances on performance parameters

Issued By

Issued Date