

PRODUCT INFORMATION PACKET

marathon®
Motors

Model No: 1009395-BR

Catalog No: 1009395

TerraMAX® Cast Iron Motor, 4 HP, 3 Ph, 60 Hz, 380 V, 3600 RPM, 90L Frame, TEFC



Regal and Marathon are trademarks of Regal Rexnord Corporation or one of its affiliated companies.

©2022 Regal Rexnord Corporation, All Rights Reserved. MC017097E

RegalRexnord

Nameplate Specifications

Output HP	4 Hp	Output KW	3.0 kW
Frequency	60 Hz	Voltage	380 V
Current	5.6 A	Speed	3470 rpm
Service Factor	1.25	Phase	3
Efficiency	88.5 %	Power Factor	0.9
Duty	S1	Insulation Class	F
Frame	90L	Enclosure	Totally Enclosed Fan Cooled
Thermal Protection	No Protection	Ambient Temperature	40 °C
Drive End Bearing Size	6205	Opp Drive End Bearing Size	6205
UL	No	CSA	No
CE	No	IP Code	55
Number of Speeds	1		

Technical Specifications

Electrical Type	Squirrel Cage	Starting Method	Direct On Line
Poles	2	Rotation	Clockwise
Mounting	B3	Motor Orientation	Horizontal
Drive End Bearing	Zz C3	Opp Drive End Bearing	Zz C3
Frame Material	Cast	Shaft Type	Keyed
Overall Length	364 mm	Frame Length	185 mm
Shaft Diameter	24 mm	Shaft Extension	50 mm
Assembly/Box Mounting	TOP		
Outline Drawing	0209000807		

This is an uncontrolled document once printed or downloaded and is subject to change without notice. Date Created:12/02/2022

4

3

Uncontrolled Copy

2

1

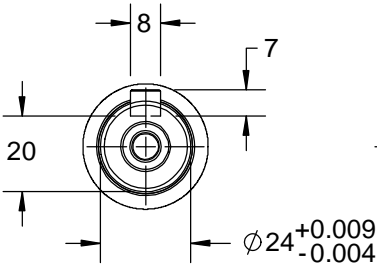
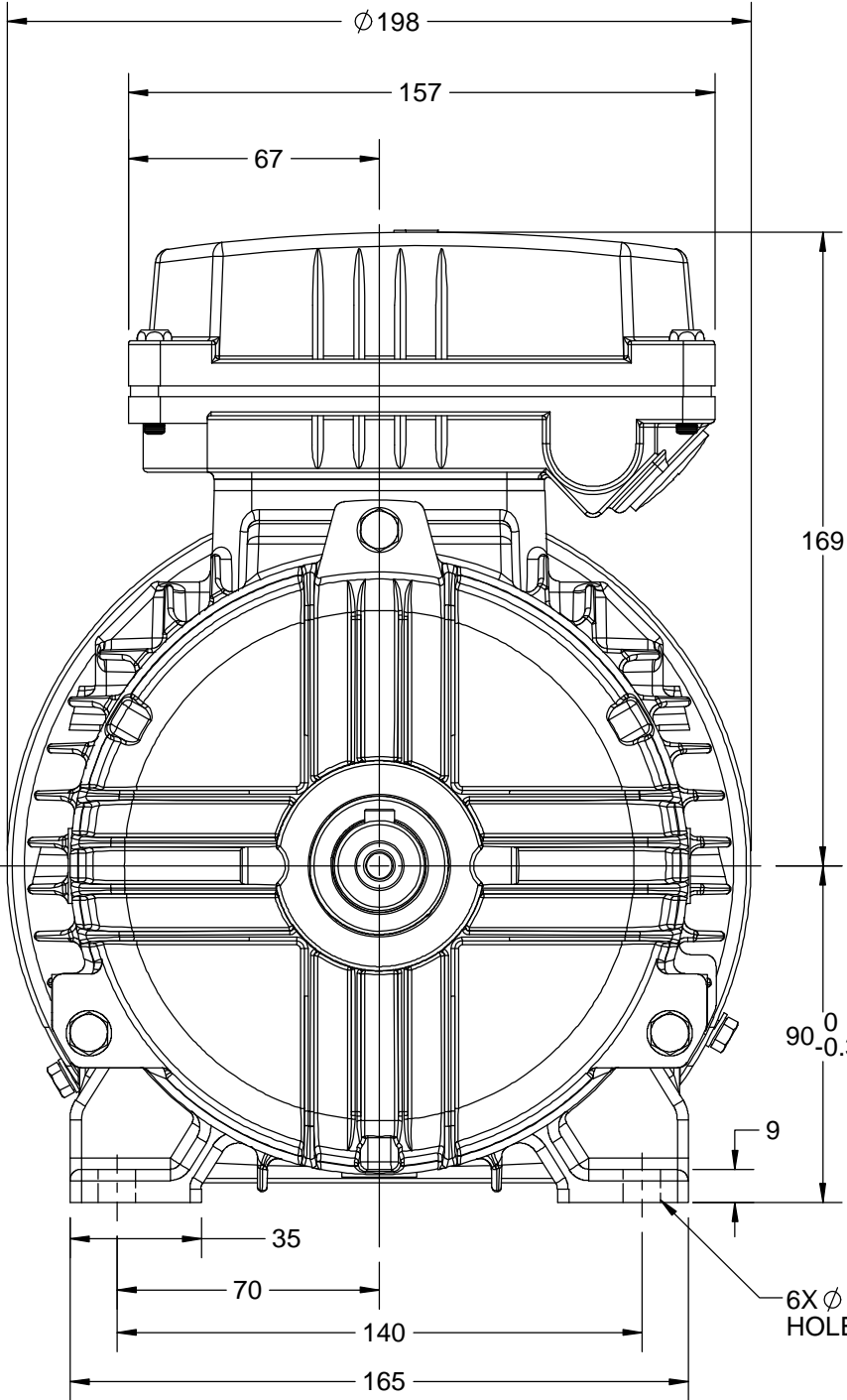
OUTLINE

B

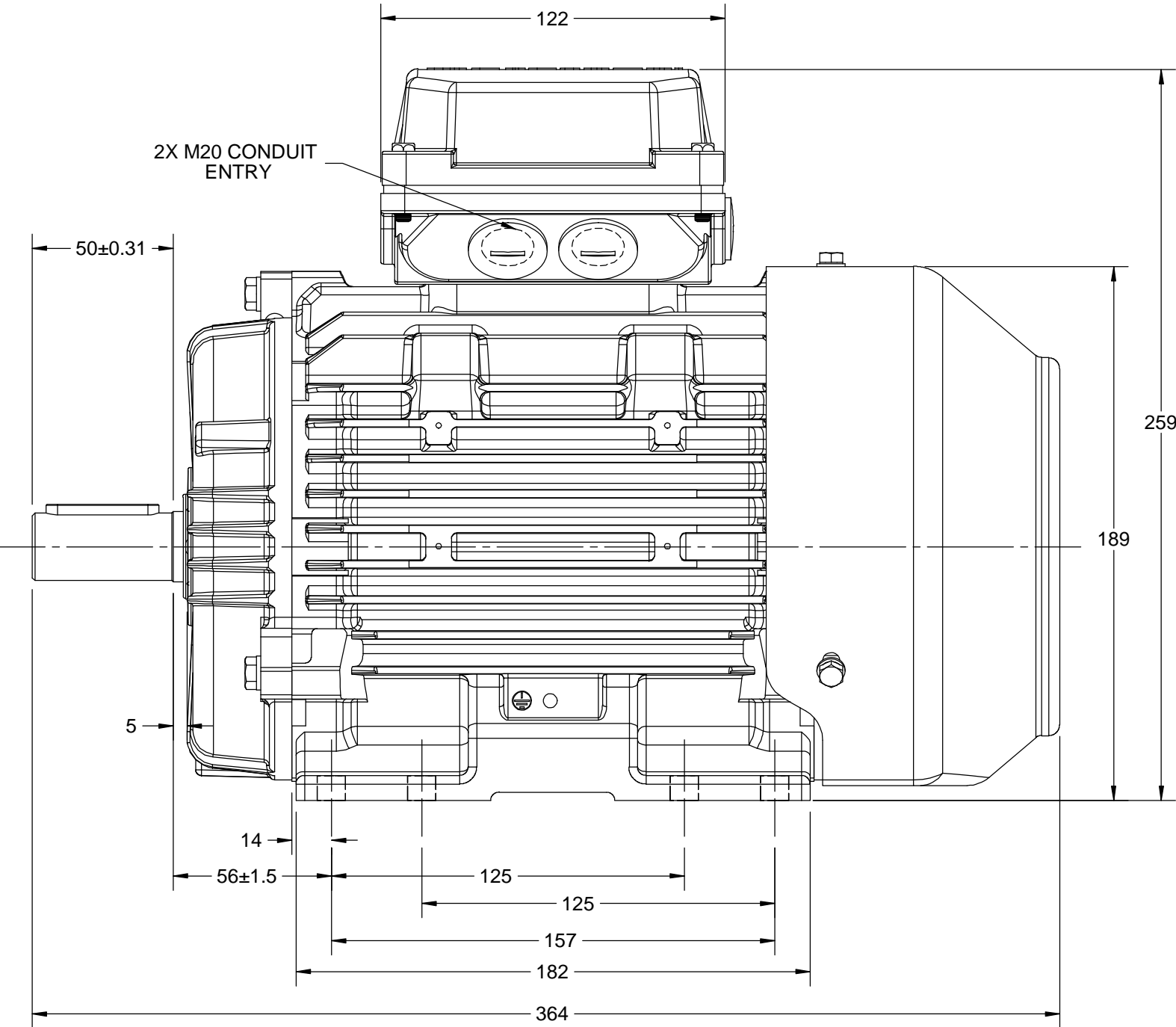
B

A

A



2X M20 CONDUIT ENTRY



DRAWING REVISION B	REVISION BY NIV	DATE 19/09/17
ECO ECO-0131516	APPROVED BY JAY	DATE 19/09/17
ECO DESCRIPTION		
UPDATED DRAWING		
COPYRIGHT REGAL BELOIT AMERICA, INC. ALL RIGHTS RESERVED. PROPRIETARY AND CONFIDENTIAL INFORMATION - THIS DOCUMENT IS THE PROPERTY OF REGAL BELOIT AMERICA, INC. ("OWNER") AND CONTAINS OWNER'S PROPRIETARY INFORMATION. ANY PERSON, CORPORATION OR OTHER FIRM RECEIVING IT IS DEEMED, BY RECEIVING IT, TO AGREE THAT IT, AND/OR ANY PART OF IT, SHALL NOT BE DISCLOSED TO ANY PERSON, CORPORATION OR OTHER ENTITY, DUPLICATED, AND/OR USED, EXCEPT AS EXPRESSLY APPROVED IN WRITING IN ADVANCE BY OWNER. THIS DOCUMENT SHALL BE RETURNED TO OWNER UPON REQUEST. IT MAY BE SUBJECT TO CERTAIN RESTRICTIONS UNDER APPLICABLE EXPORT CONTROL LAWS AND REGULATIONS.		

DRAWN BY NIV			
DATE 17/07/17			
APPROVED BY JAY	DESCRIPTION		
DATE 17/07/17	OUTLINE		
REFERENCE	90 FR- B3 MTG. MOTOR TYPE:TCA/QCA		
	MATERIAL	PROCESS/FINISH	
THIRD ANGLE PROJECTION	SIZE B	DRAWING NUMBER 0209000807	SHEET 1 OF 1

4

3

2

1

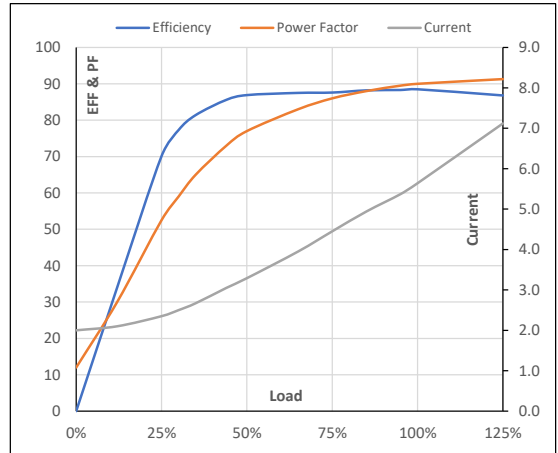
Model No. 1009395

Enclosure	U (V)	Δ / Y Conn	f [Hz]	P [kW]	P [hp]	I [A]	n [RPM]	T [kgm]	T [Nm]	IE Class	Amb [°C]	Duty	Elevation [m]	Inertia [kg-m ²]	Weight [kg]
TEFC	380	Δ	60	3	4	5.6	3470	0.82	8.09	IR3	40	S1	1000	0.0132	32

Motor Load Data

Load Point		NL	1/4FL	1/2FL	3/4FL	FL	5/4FL
Current	A	2.0	2.4	3.3	4.5	5.6	7.1
Torque	Nm	0.0	2.0	4.0	6.1	8.1	10.4
Speed	r/min	3600	3568	3538	3505	3470	3429
Efficiency	%	0.0	70.1	86.9	87.6	88.5	86.8
Power Factor	%	12.0	52.5	77.0	86.0	90.0	91.3

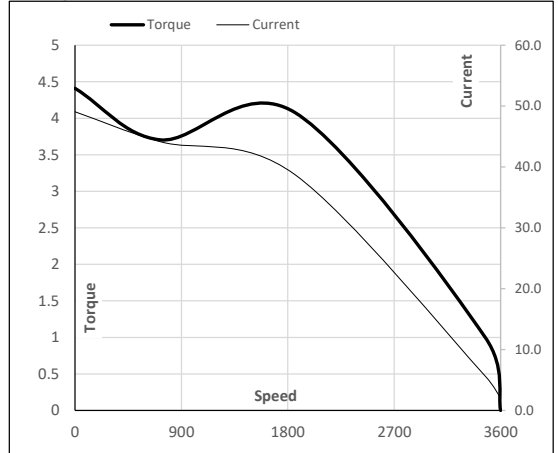
Performance vs Load Chart



Motor Speed Torque Data

Load Point		LR	P-Up	BD	Rated	NL
Speed	r/min	0	720	1859	3470	3600
Current	A	49.1	44.2	38.8	5.6	2.0
Torque	pu	4.4	3.7	4.1	1	0

Starting Characteristics Chart



NOTE Refer data sheet for applicable standard and tolerances on performance parameters

Issued By

Issued Date