

PRODUCT INFORMATION PACKET

marathon®
Motors

Model No: 1009084-BR

Catalog No: 1009084

TerraMAX® Cast Iron Motor, 20 HP, 3 Ph, 60 Hz, 380 V, 1200 RPM, 160M/L Frame, TEFC



Regal and Marathon are trademarks of Regal Rexnord Corporation or one of its affiliated companies.

©2022 Regal Rexnord Corporation, All Rights Reserved. MC017097E

RegalRexnord

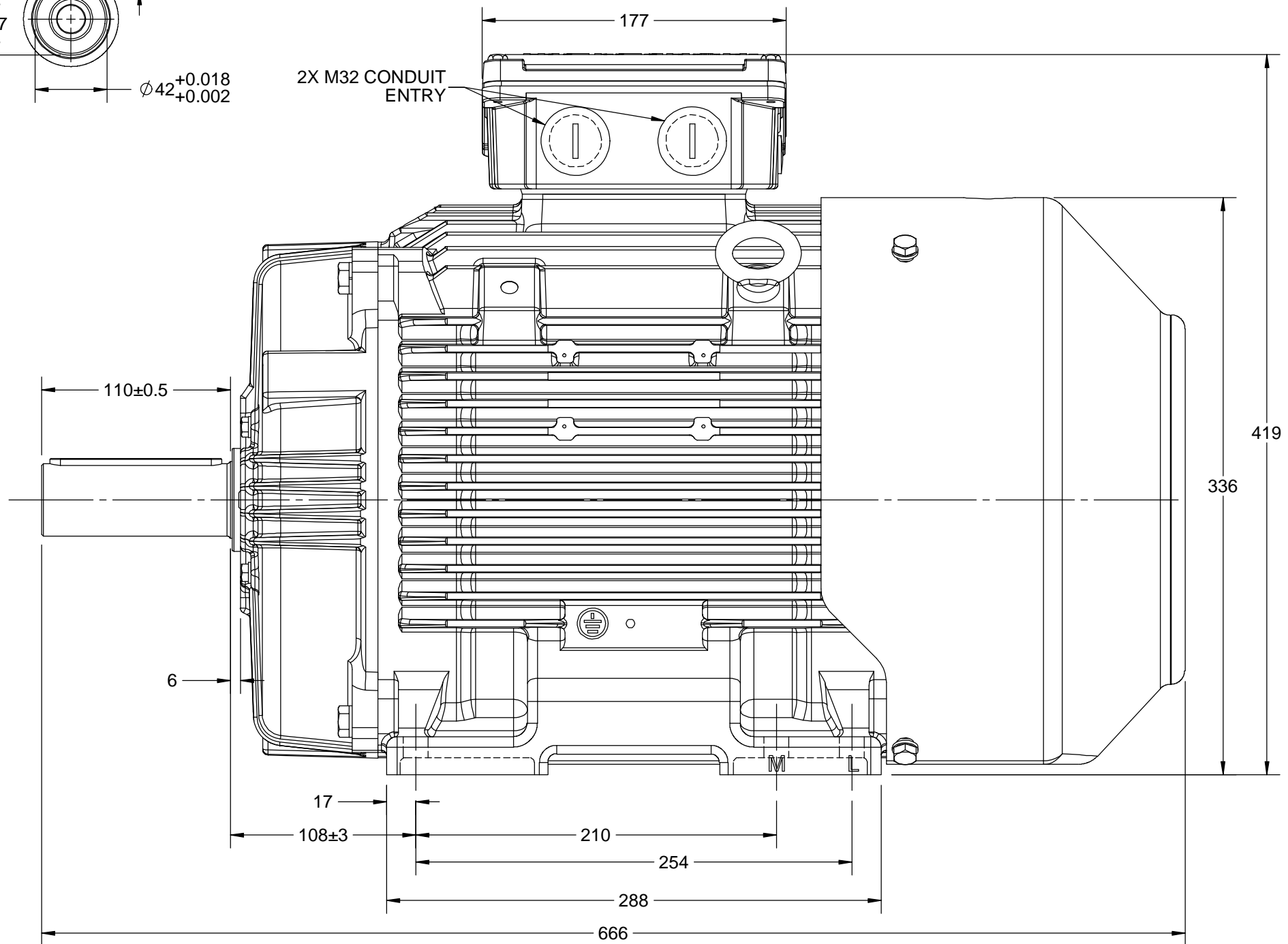
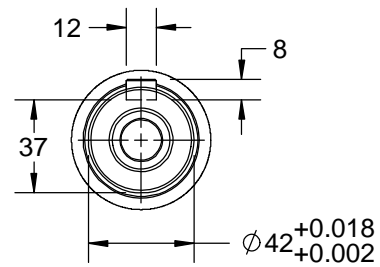
Nameplate Specifications




Output HP	20 Hp	Output KW	15.0 kW
Frequency	60 Hz	Voltage	380 V
Current	30.5 A	Speed	1178 rpm
Service Factor	1.25	Phase	3
Efficiency	91.7 %	Power Factor	0.8
Duty	S1	Insulation Class	F
Frame	160M/L	Enclosure	Totally Enclosed Fan Cooled
Thermal Protection	No Protection	Ambient Temperature	40 °C
Drive End Bearing Size	6309	Opp Drive End Bearing Size	6209
UL	No	CSA	No
CE	No	IP Code	55
Number of Speeds	1		

Technical Specifications

Electrical Type	Squirrel Cage	Starting Method	Direct On Line
Poles	6	Rotation	Clockwise
Mounting	B3	Motor Orientation	Horizontal
Drive End Bearing	Zz C3	Opp Drive End Bearing	Zz C3
Frame Material	Cast	Shaft Type	Keyed
Overall Length	666 mm	Frame Length	298 mm
Shaft Diameter	42 mm	Shaft Extension	110 mm
Assembly/Box Mounting	TOP		
Outline Drawing	0216000441		

This is an uncontrolled document once printed or downloaded and is subject to change without notice. Date Created:12/02/2022



DRAWING REVISION D		REVISION BY LK		DATE 21/05/2020			DRAWN BY SDV								
ECO ECO-0186894		APPROVED BY JAY		DATE 21/05/2020			DATE 11/04/2014								
ECO DESCRIPTION MODEL UPDATED COPYRIGHT REGAL BELOIT AMERICA, INC. ALL RIGHTS RESERVED. PROPRIETARY AND CONFIDENTIAL INFORMATION - THIS DOCUMENT IS THE PROPERTY OF REGAL BELOIT AMERICA, INC. ("OWNER") AND CONTAINS OWNER'S PROPRIETARY INFORMATION. ANY PERSON, CORPORATION OR OTHER FIRM RECEIVING IT IS DEEMED, BY RECEIVING IT, TO AGREE THAT IT, AND/OR ANY PART OF IT, SHALL NOT BE DISCLOSED TO ANY PERSON, CORPORATION OR OTHER ENTITY, DUPLICATED, AND/OR USED, EXCEPT AS EXPRESSLY APPROVED IN WRITING IN ADVANCE BY OWNER. THIS DOCUMENT SHALL BE RETURNED TO OWNER UPON REQUEST. IT MAY BE SUBJECT TO CERTAIN RESTRICTIONS UNDER APPLICABLE EXPORT CONTROL LAWS AND REGULATIONS.							APPROVED BY SBD		DESCRIPTION OUTLINE TCA/QCA-160L-B3						
							DATE 11/04/2014								
													REFERENCE		MATERIAL
						THIRD ANGLE PROJECTION				SIZE B		DRAWING NUMBER 0216000441		SHEET 1 OF 1	

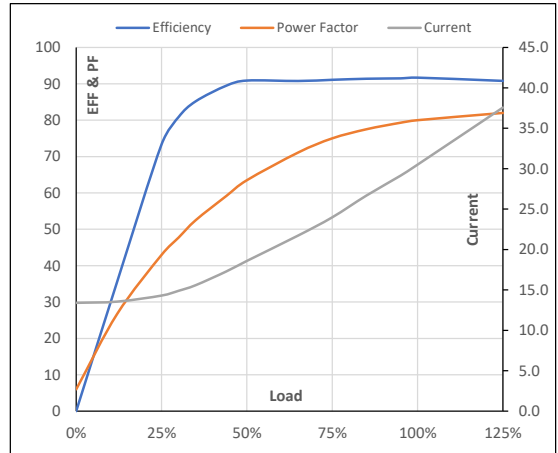
Model No. 1009084

Enclosure	U (V)	Δ / Y Conn	f [Hz]	P [kW]	P [hp]	I [A]	n [RPM]	T [kgm]	T [Nm]	IE Class	Amb [°C]	Duty	Elevation [m]	Inertia [kg-m ²]	Weight [kg]
TEFC	380	Δ	60	15	20	30.5	1178	12.19	119.56	IR3	40	S1	1000	0.76	167

Motor Load Data

Load Point		NL	1/4FL	1/2FL	3/4FL	FL	5/4FL
Current	A	13.4	14.3	18.6	24.0	30.5	37.6
Torque	Nm	0.0	29.8	59.9	90.2	119.6	152.0
Speed	r/min	1200	1195	1190	1184	1178	1172
Efficiency	%	0.0	73.3	90.9	91.1	91.7	90.8
Power Factor	%	6.0	43.0	63.5	75.0	80.0	82.0

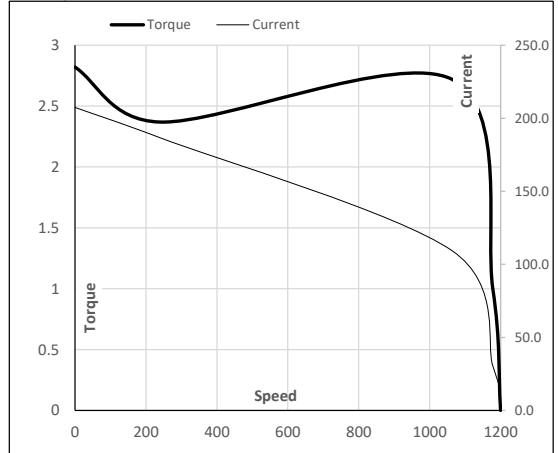
Performance vs Load Chart



Motor Speed Torque Data

Load Point		LR	P-Up	BD	Rated	NL
Speed	r/min	0	240	1063	1178	1200
Current	A	207.4	186.7	109.4	30.5	13.4
Torque	pu	2.8	2.4	2.7	1	0

Starting Characteristics Chart



NOTE Refer data sheet for applicable standard and tolerances on performance parameters

Issued By
Issued Date