

PRODUCT INFORMATION PACKET

marathon®
Motors

Model No: 1009083-BR

Catalog No: 1009083

TerraMAX® Cast Iron Motor, 5 HP, 3 Ph, 60 Hz, 380 V, 1200 RPM, 132S Frame, TEFC



Regal and Marathon are trademarks of Regal Rexnord Corporation or one of its affiliated companies.

©2022 Regal Rexnord Corporation, All Rights Reserved. MC017097E

RegalRexnord

Nameplate Specifications

Output HP	5 Hp	Output KW	3.7 kW
Frequency	60 Hz	Voltage	380 V
Current	8.7 A	Speed	1178 rpm
Service Factor	1.25	Phase	3
Efficiency	89.5 %	Power Factor	0.72
Duty	S1	Insulation Class	F
Frame	132S	Enclosure	Totally Enclosed Fan Cooled
Thermal Protection	No Protection	Ambient Temperature	40 °C
Drive End Bearing Size	6308	Opp Drive End Bearing Size	6208
UL	No	CSA	No
CE	No	IP Code	55
Number of Speeds	1		

Technical Specifications

Electrical Type	Squirrel Cage	Starting Method	Direct On Line
Poles	6	Rotation	Clockwise
Mounting	B3	Motor Orientation	Horizontal
Drive End Bearing	Zz C3	Opp Drive End Bearing	Zz C3
Frame Material	Cast	Shaft Type	Keyed
Overall Length	465 mm	Frame Length	202 mm
Shaft Diameter	38 mm	Shaft Extension	80 mm
Assembly/Box Mounting	TOP		
Outline Drawing	0213200610		

This is an uncontrolled document once printed or downloaded and is subject to change without notice. Date Created:12/02/2022

4

3

Uncontrolled Copy

2

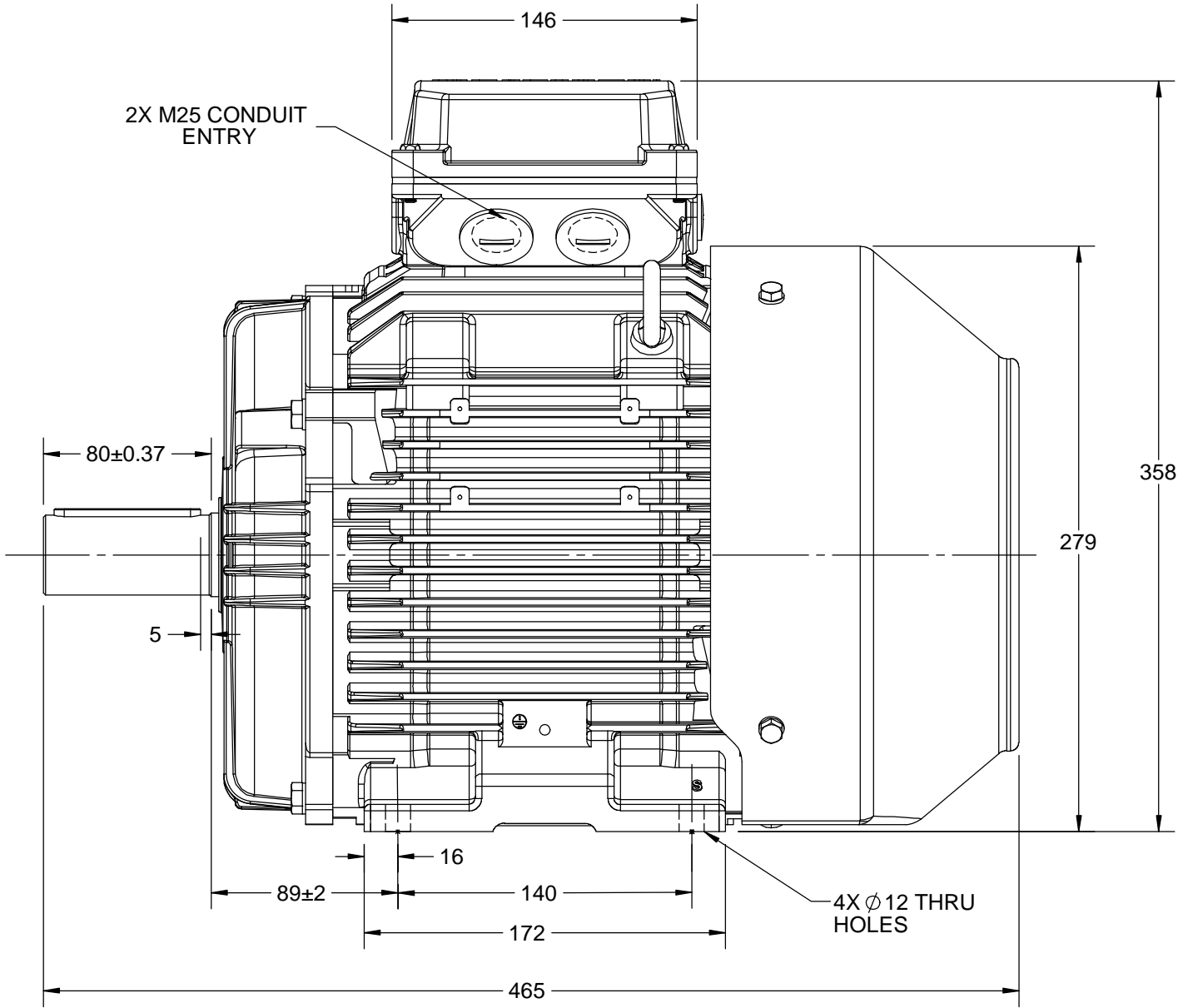
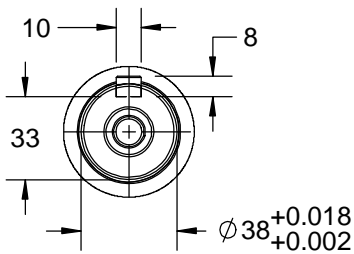
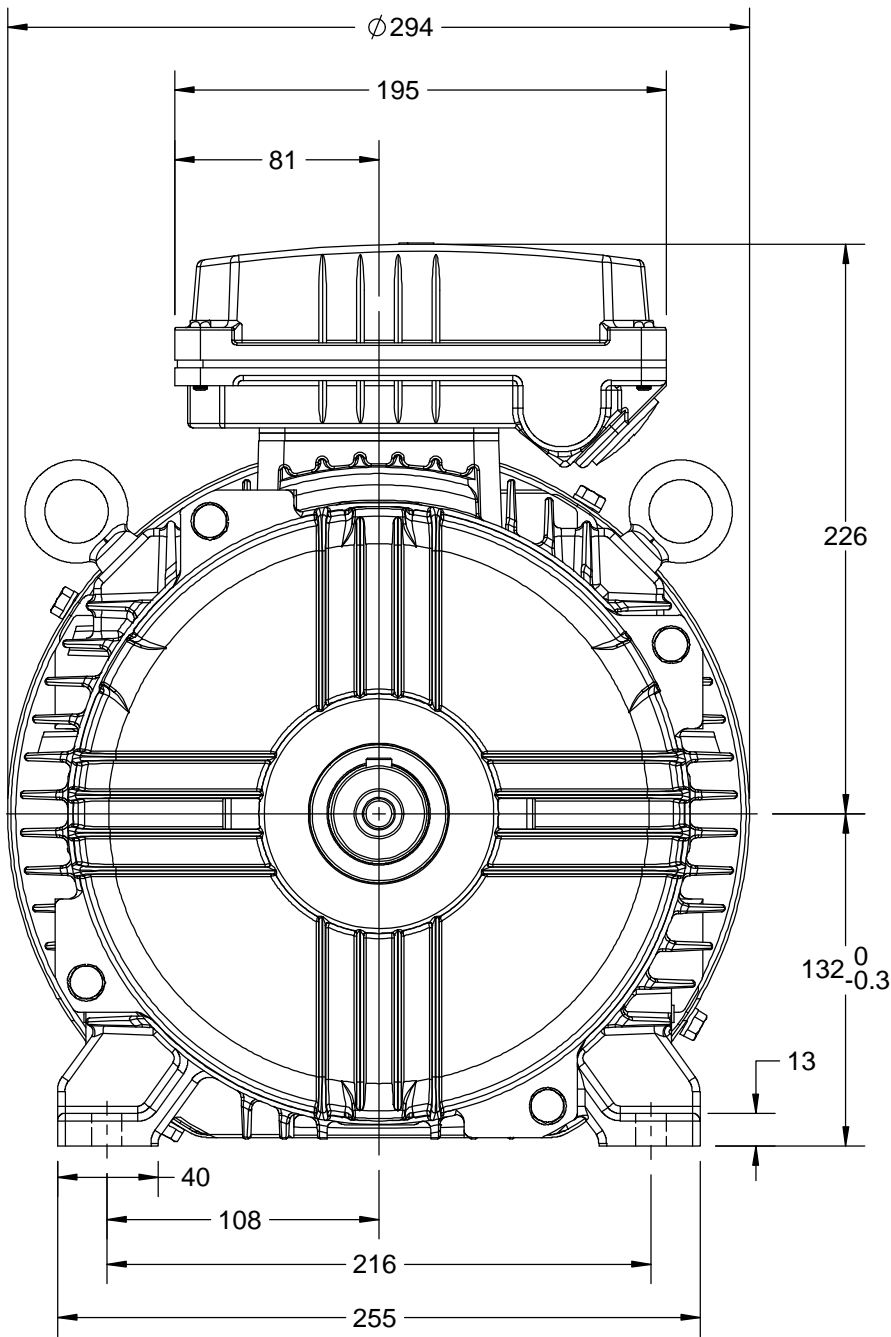
1

B

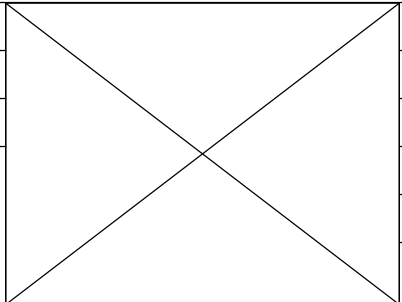
B

A

A



DRAWING REVISION C	REVISION BY S.MUDDA	DATE 26/06/2018
ECO ECO-0147359	APPROVED BY JAY	DATE 26/06/2018
ECO DESCRIPTION OUTLINE UPDATED AS PER NEW 3D STRUCTURING		
COPYRIGHT REGAL BELOIT AMERICA, INC. ALL RIGHTS RESERVED. PROPRIETARY AND CONFIDENTIAL INFORMATION - THIS DOCUMENT IS THE PROPERTY OF REGAL BELOIT AMERICA, INC. ("OWNER") AND CONTAINS OWNER'S PROPRIETARY INFORMATION. ANY PERSON, CORPORATION OR OTHER FIRM RECEIVING IT IS DEEMED, BY RECEIVING IT, TO AGREE THAT IT, AND/OR ANY PART OF IT, SHALL NOT BE DISCLOSED TO ANY PERSON, CORPORATION OR OTHER ENTITY, DUPLICATED, AND/OR USED, EXCEPT AS EXPRESSLY APPROVED IN WRITING IN ADVANCE BY OWNER. THIS DOCUMENT SHALL BE RETURNED TO OWNER UPON REQUEST. IT MAY BE SUBJECT TO CERTAIN RESTRICTIONS UNDER APPLICABLE EXPORT CONTROL LAWS AND REGULATIONS.		



DRAWN BY VINAY	marathon™ Motors		
DATE 10/11/2014			
APPROVED BY KRK	DESCRIPTION OUTLINE		
DATE 10/11/2014	132-S FR.- B3 MTG. MOTOR TYPE TCA\QCA		
REFERENCE	MATERIAL	PROCESS/FINISH	
THIRD ANGLE PROJECTION	SIZE B	DRAWING NUMBER 0213200610	SHEET 1 OF 1

4

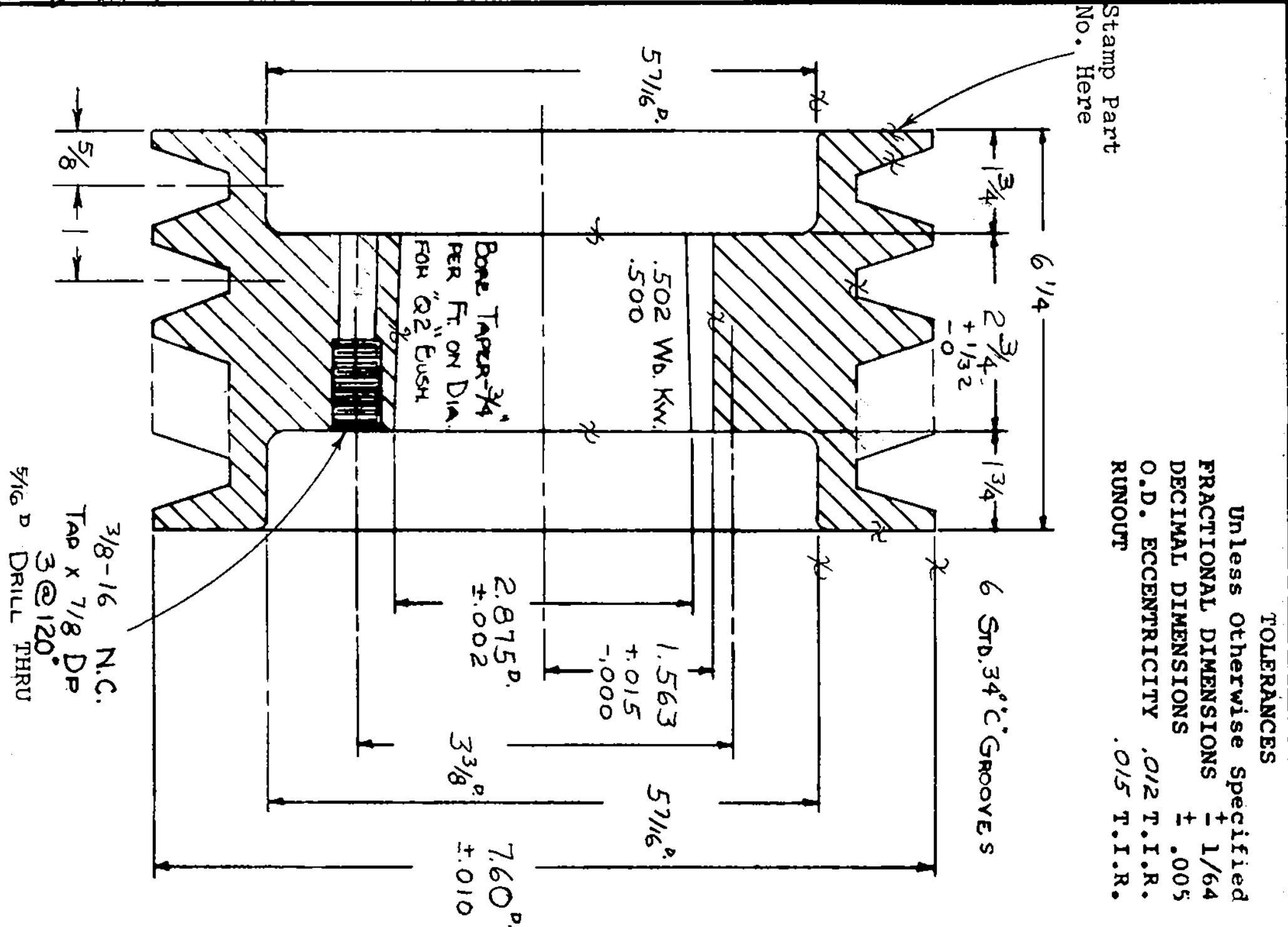
3

2

1

FORM 14
FORM #6064

BROWNING MANUFACTURING COMPANY, MAYSVILLE, KENTUCKY				12255			
DATE 1-15-68		6TC 72 CAST IRON SHEAVE		Material - 6TC70-72 CSTG.			
DR. S.V.J.R.				Carton - T86			
CHK'D St				Balance - 1/4 oz.			
DISTRIBUTION		Mfg. Data		Finish - STD GRAY			
REVISION		BY	DATE	REVISION		BY	DATE
A ADD DRILL DEPTH & GROOVE LOC.		AP	9/3/68	D FIN BACK SIDE HUB ECO 83-133E		DPW	5-26-83
B CSTG WAS 6TC72		AP	7-1-69	E ECO 91-759		KH	4-92
C Revised Per CR74-170		JH	9/74				



TOLERANCES
Unless otherwise Specified
FRACTIONAL DIMENSIONS ± 1/64
DECIMAL DIMENSIONS ± .005
O.D. ECCENTRICITY .012 T.I.R.
RUNOUT .015 T.I.R.

DWG. NO. **A1009083** 3M
~~68X9135-6~~

issue **E**

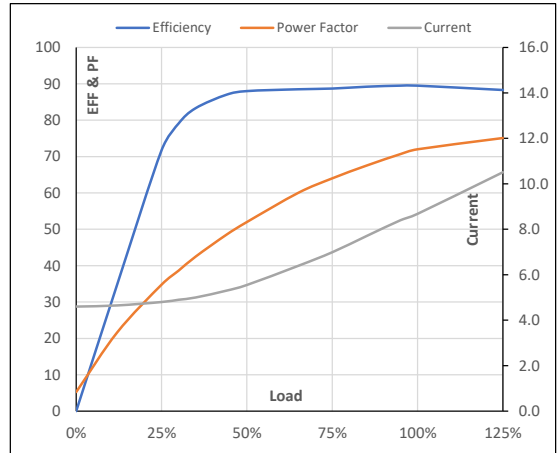
Model No. 1009083

Enclosure	U (V)	Δ / Y Conn	f [Hz]	P [kW]	P [hp]	I [A]	n [RPM]	T [kgm]	T [Nm]	IE Class	Amb [°C]	Duty	Elevation [m]	Inertia [kg-m ²]	Weight [kg]
TEFC	380	Δ	60	3.7	5	8.7	1178	3.04	29.79	IR3	40	S1	1000	0.197	72

Motor Load Data

Load Point		NL	1/4FL	1/2FL	3/4FL	FL	5/4FL
Current	A	4.6	4.8	5.6	7.0	8.7	10.5
Torque	Nm	0.0	7.5	15.0	22.6	29.8	38.1
Speed	r/min	1200	1195	1190	1184	1178	1171
Efficiency	%	0.0	71.7	88.0	88.7	89.5	88.3
Power Factor	%	5.3	34.8	52.0	64.0	72.0	75.1

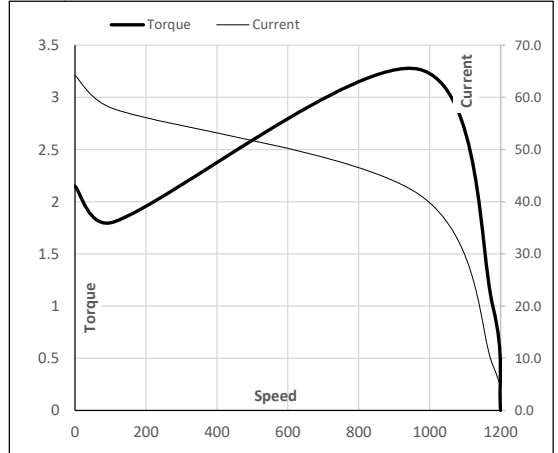
Performance vs Load Chart



Motor Speed Torque Data

Load Point		LR	P-Up	BD	Rated	NL
Speed	r/min	0	109	969	1178	1200
Current	A	64.2	57.8	41.4	8.7	4.6
Torque	pu	2.2	1.8	3.3	1	0

Starting Characteristics Chart



NOTE Refer data sheet for applicable standard and tolerances on performance parameters

Issued By
Issued Date