

# PRODUCT INFORMATION PACKET

**marathon®**  
Motors

Model No: 1009073-BR

Catalog No: 1009073

TerraMAX® Cast Iron Motor, 20 HP, 3 Ph, 60 Hz, 380 V, 1800 RPM, 160M Frame, TEFC



Regal and Marathon are trademarks of Regal Rexnord Corporation or one of its affiliated companies.  
©2022 Regal Rexnord Corporation, All Rights Reserved. MC017097E

**RegalRexnord**

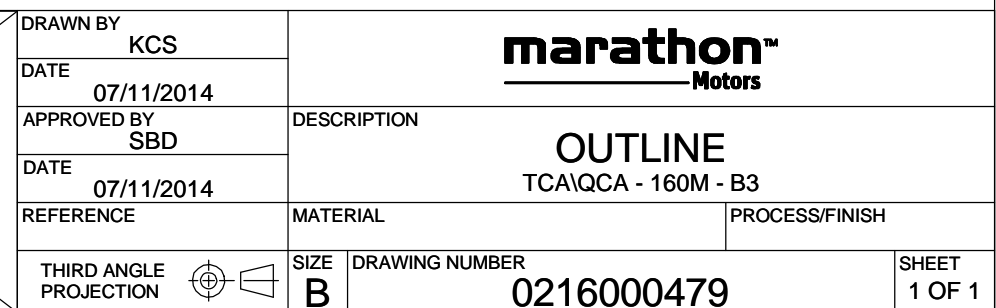
### Nameplate Specifications

Output HP	20 Hp	Output KW	15.0 kW
Frequency	60 Hz	Voltage	380 V
Current	6.2 A	Speed	1771 rpm
Service Factor	1.25	Phase	3
Efficiency	93 %	Power Factor	0.85
Duty	S1	Insulation Class	F
Frame	160M	Enclosure	Totally Enclosed Fan Cooled
Thermal Protection	No Protection	Ambient Temperature	40 °C
Drive End Bearing Size	6309	Opp Drive End Bearing Size	6209
UL	No	CSA	No
CE	No	IP Code	55
Number of Speeds	1		

### Technical Specifications

Electrical Type	Squirrel Cage	Starting Method	Direct On Line
Poles	4	Rotation	Clockwise
Mounting	B3	Motor Orientation	Horizontal
Drive End Bearing	Zz C3	Opp Drive End Bearing	Zz C3
Frame Material	Cast	Shaft Type	Keyed
Overall Length	622 mm	Frame Length	254 mm
Shaft Diameter	42 mm	Shaft Extension	110 mm
Assembly/Box Mounting	TOP		
Outline Drawing	0216000479		

This is an uncontrolled document once printed or downloaded and is subject to change without notice. Date Created:12/02/2022



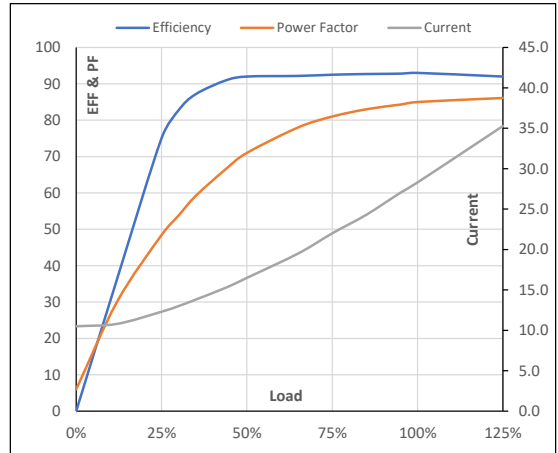
Model No. 1009073

Enclosure	U (V)	$\Delta$ / Y Conn	f [Hz]	P [kW]	P [hp]	I [A]	n [RPM]	T [kgm]	T [Nm]	IE Class	Amb [°C]	Duty	Elevation [m]	Inertia [kg-m <sup>2</sup> ]	Weight [kg]
TEFC	380	$\Delta$	60	15	20	28.3	1771	8.08	79.28	IR3	40	S1	1000	0.454	145

**Motor Load Data**

Load Point		NL	1/4FL	1/2FL	3/4FL	FL	5/4FL
Current	A	10.5	12.3	16.5	22.0	28.3	35.3
Torque	Nm	0.0	19.9	39.9	60.1	79.3	101.1
Speed	r/min	1800	1793	1786	1778	1771	1761
Efficiency	%	0.0	75.0	92.0	92.5	93.0	92.0
Power Factor	%	6.0	48.4	71.0	81.0	85.0	86.1

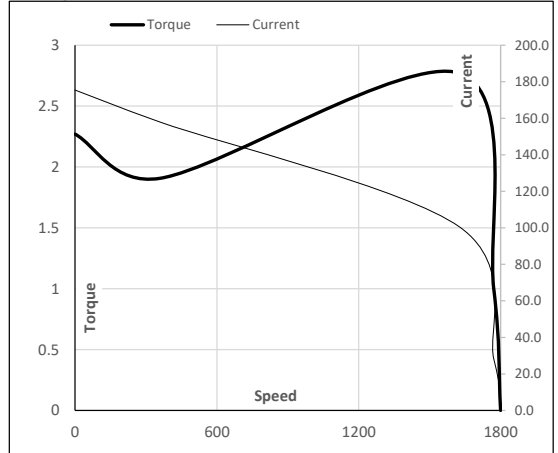
**Performance vs Load Chart**



**Motor Speed Torque Data**

Load Point		LR	P-Up	BD	Rated	NL
Speed	r/min	0	360	1627	1771	1800
Current	A	175.5	157.9	100.4	28.3	10.5
Torque	pu	2.3	1.9	2.8	1	0

**Starting Characteristics Chart**



**NOTE** Refer data sheet for applicable standard and tolerances on performance parameters

Issued By

Issued Date