

# PRODUCT INFORMATION PACKET

**marathon®**  
Motors

Model No: 1009060-BR

Catalog No: 1009060

TerraMAX® Cast Iron Motor, 5 HP, 3 Ph, 60 Hz, 380 V, 3600 RPM, 100L2 Frame, TEFC



Regal and Marathon are trademarks of Regal Rexnord Corporation or one of its affiliated companies.

©2022 Regal Rexnord Corporation, All Rights Reserved. MC017097E

**RegalRexnord**

### Nameplate Specifications

Output HP	5 Hp	Output KW	3.7 kW
Frequency	60 Hz	Voltage	380 V
Current	6.9 A	Speed	3487 rpm
Service Factor	1.25	Phase	3
Efficiency	88.5 %	Power Factor	0.92
Duty	S1	Insulation Class	F
Frame	100L2	Enclosure	Totally Enclosed Fan Cooled
Thermal Protection	No Protection	Ambient Temperature	40 °C
Drive End Bearing Size	6206	Opp Drive End Bearing Size	6206
UL	No	CSA	No
CE	No	IP Code	55
Number of Speeds	1		

### Technical Specifications

Electrical Type	Squirrel Cage	Starting Method	Direct On Line
Poles	2	Rotation	Clockwise
Mounting	B3	Motor Orientation	Horizontal
Drive End Bearing	Zz C3	Opp Drive End Bearing	Zz C3
Frame Material	Cast	Shaft Type	Keyed
Overall Length	423 mm	Frame Length	200 mm
Shaft Diameter	28 mm	Shaft Extension	60 mm
Assembly/Box Mounting	TOP		
Outline Drawing	0210000293		

This is an uncontrolled document once printed or downloaded and is subject to change without notice. Date Created:12/02/2022

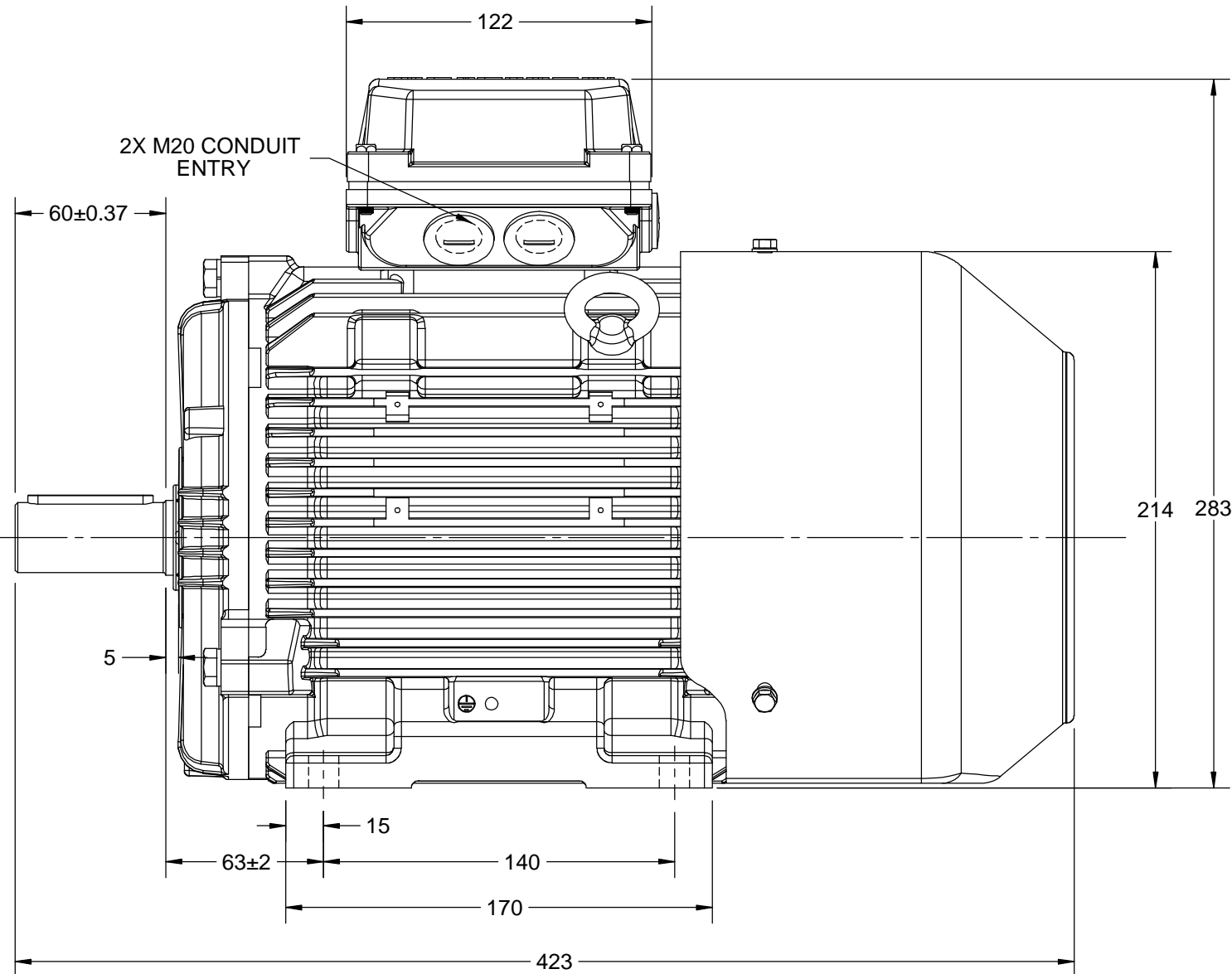
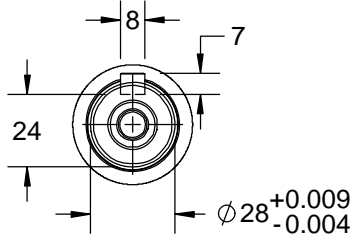
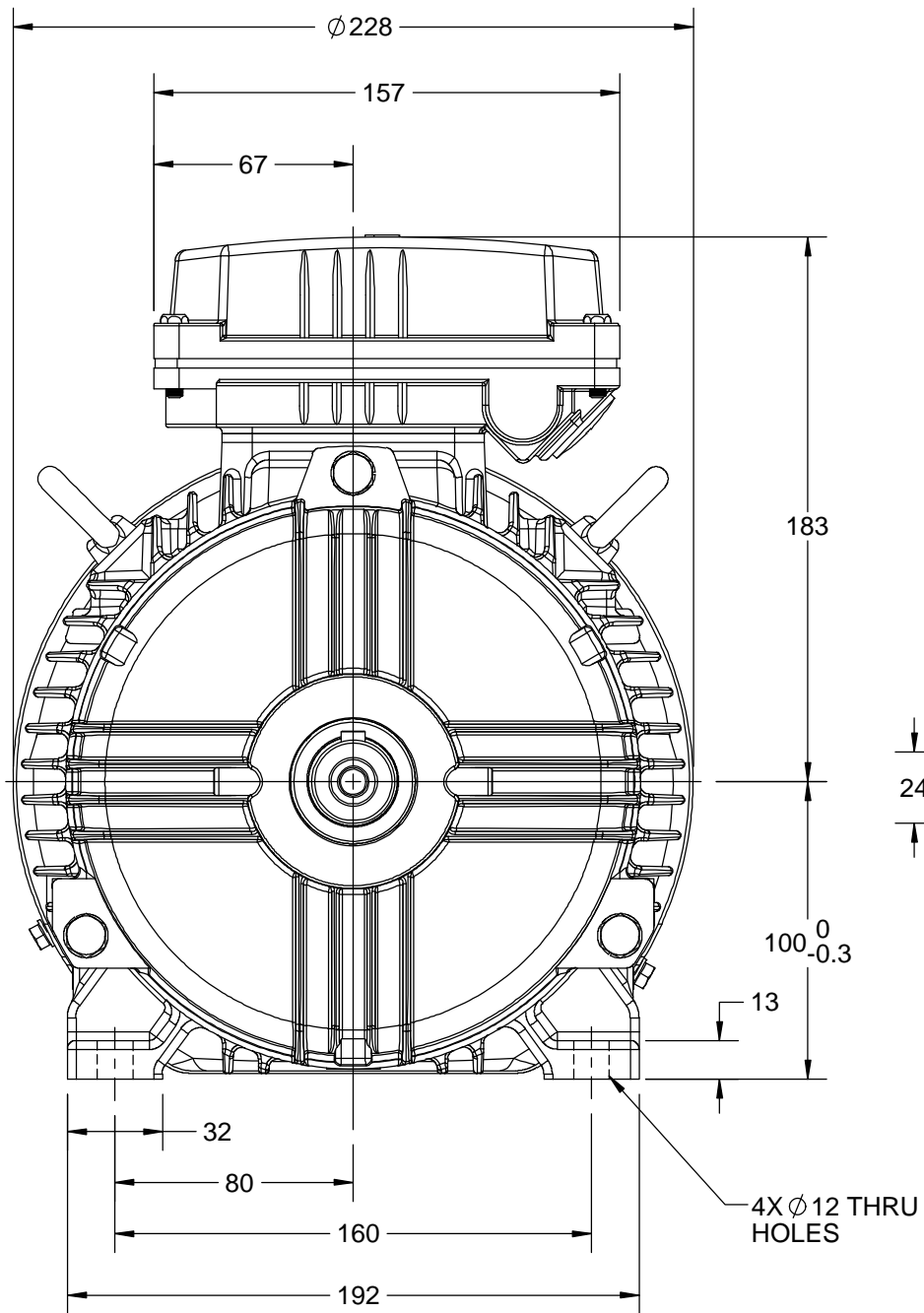
OUTLINE

B

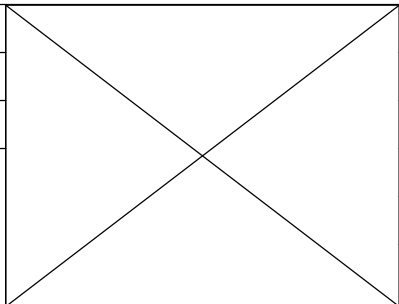
B

A

A



DRAWING REVISION A	REVISION BY LK	DATE 29/08/2017
ECO ECO-0130161	APPROVED BY JAY	DATE 29/08/2017
ECO DESCRIPTION NEW DRAWING RELEASE COPYRIGHT REGAL BELOIT AMERICA, INC. ALL RIGHTS RESERVED. PROPRIETARY AND CONFIDENTIAL INFORMATION - THIS DOCUMENT IS THE PROPERTY OF REGAL BELOIT AMERICA, INC. ("OWNER") AND CONTAINS OWNER'S PROPRIETARY INFORMATION. ANY PERSON, CORPORATION OR OTHER FIRM RECEIVING IT IS DEEMED, BY RECEIVING IT, TO AGREE THAT IT, AND/OR ANY PART OF IT, SHALL NOT BE DISCLOSED TO ANY PERSON, CORPORATION OR OTHER ENTITY, DUPLICATED, AND/OR USED, EXCEPT AS EXPRESSLY APPROVED IN WRITING IN ADVANCE BY OWNER. THIS DOCUMENT SHALL BE RETURNED TO OWNER UPON REQUEST. IT MAY BE SUBJECT TO CERTAIN RESTRICTIONS UNDER APPLICABLE EXPORT CONTROL LAWS AND REGULATIONS.		



DRAWN BY MR	<b>marathon™</b> Motors		
DATE 18/11/2014			
APPROVED BY JOY	DESCRIPTION OUTLINE		
DATE 18/11/2014	100 FR.- B3-H/O MTG. MOTOR TYPE: TCA/QCA		
REFERENCE	MATERIAL	PROCESS/FINISH	
THIRD ANGLE PROJECTION	SIZE B	DRAWING NUMBER 0210000293	SHEET 1 OF 1

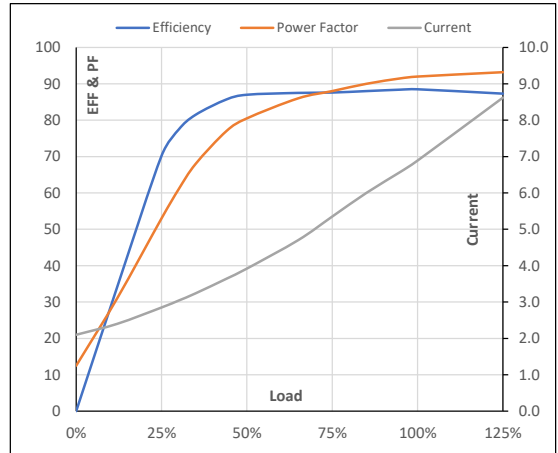
Model No. 1009060

Enclosure	U (V)	Δ / Y Conn	f [Hz]	P [kW]	P [hp]	I [A]	n [RPM]	T [kgm]	T [Nm]	IE Class	Amb [°C]	Duty	Elevation [m]	Inertia [kg-m <sup>2</sup> ]	Weight [kg]
TEFC	380	Δ	60	3.7	5	6.9	3487	1.03	10.09	IR3	40	S1	1000	0.0224	44

**Motor Load Data**

Load Point		NL	1/4FL	1/2FL	3/4FL	FL	5/4FL
Current	A	2.1	2.9	3.9	5.4	6.9	8.6
Torque	Nm	0.0	2.5	5.0	7.6	10.1	12.9
Speed	r/min	3600	3571	3545	3517	3487	3454
Efficiency	%	0.0	70.2	87.0	87.6	88.5	87.3
Power Factor	%	12.5	53.0	80.5	88.0	92.0	93.2

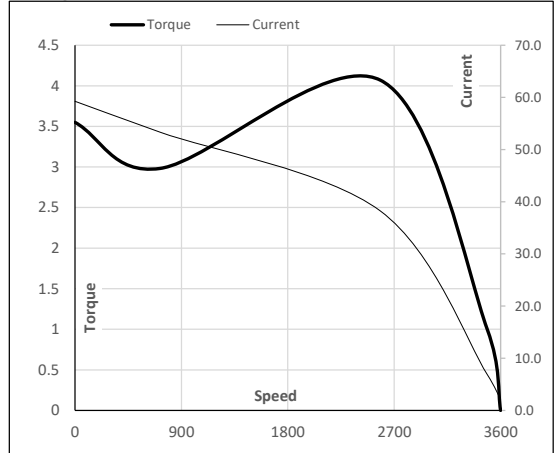
**Performance vs Load Chart**



**Motor Speed Torque Data**

Load Point		LR	P-Up	BD	Rated	NL
Speed	r/min	0	720	2582	3487	3600
Current	A	59.3	53.3	38.3	6.9	2.1
Torque	pu	3.6	3.0	4.1	1	0

**Starting Characteristics Chart**



**NOTE** Refer data sheet for applicable standard and tolerances on performance parameters

Issued By  
Issued Date