

PRODUCT INFORMATION PACKET

marathon®
Motors

Model No: 100LTFC6577

Catalog No: R420A

Globetrotter® IEC Cast Iron Motor, 2 HP, 3 Ph, 60 Hz, 575 V, 1200 RPM, 100L Frame, TEFC



Regal and Marathon are trademarks of Regal Rexnord Corporation or one of its affiliated companies.

©2023 Regal Rexnord Corporation, All Rights Reserved. MC017097E

RegalRexnord

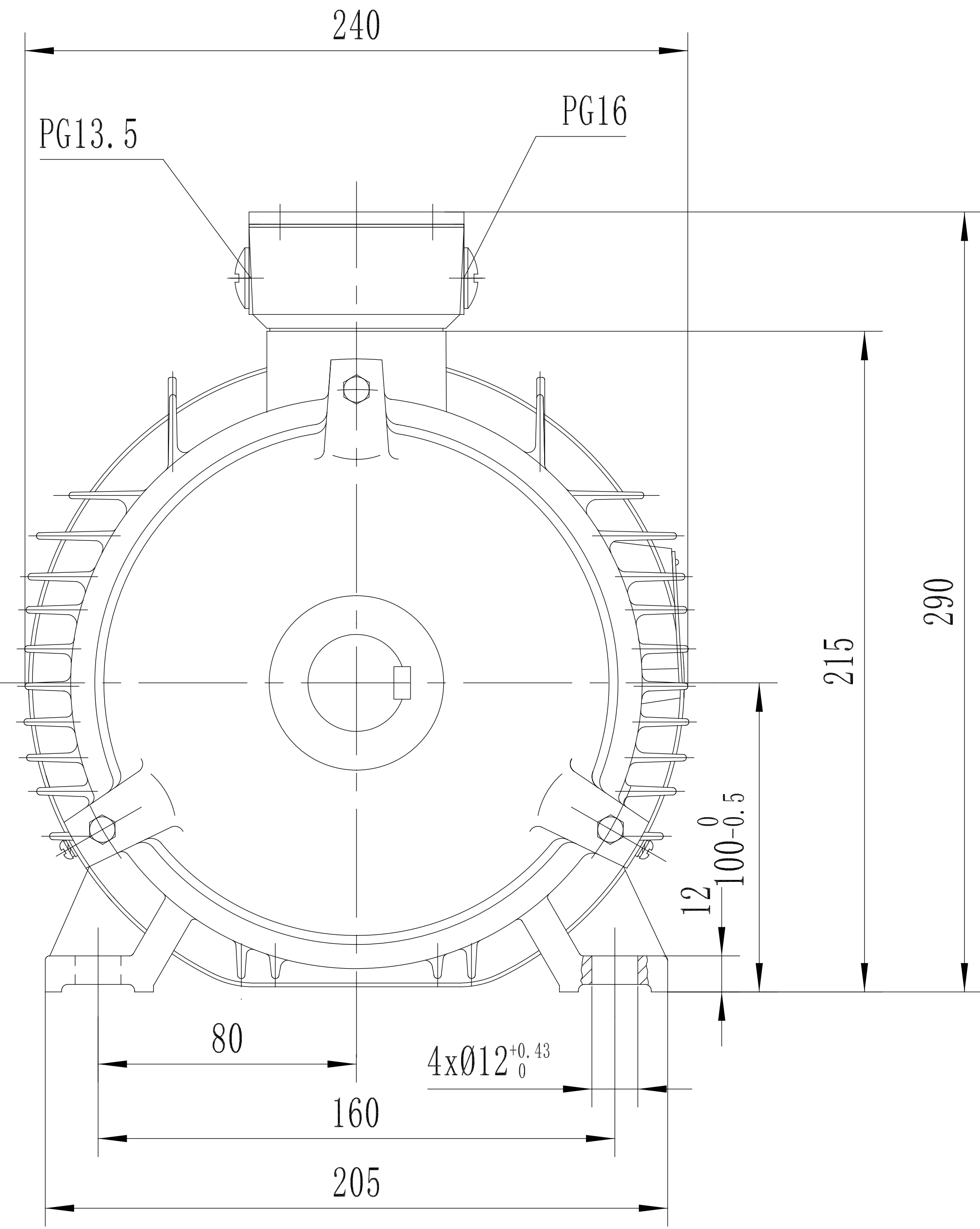
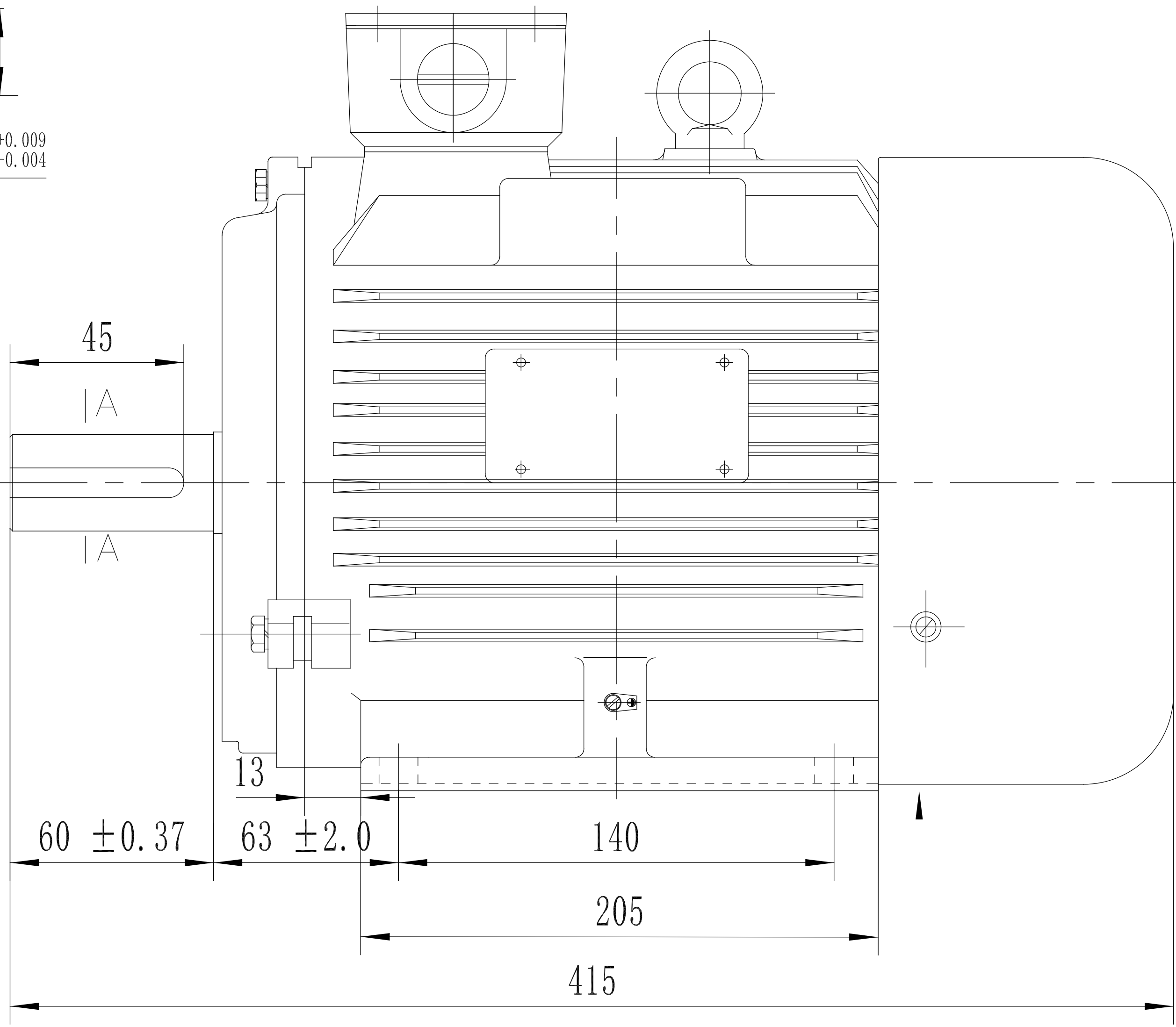
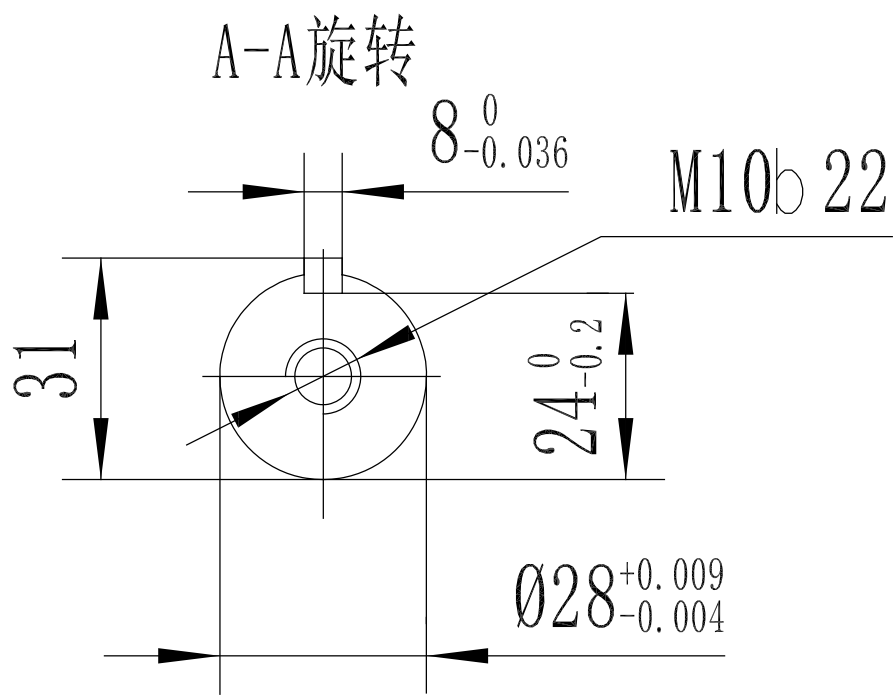
Nameplate Specifications

Phase	3	Output HP	2 Hp
Output KW	1.5 kW	Voltage	575 V
Speed	1185 rpm	Service Factor	1.15
Frame	100L	Enclosure	Totally Enclosed Fan Cooled
Thermal Protection	No Protection	Efficiency	87.5 %
Ambient Temperature	40 °C	Frequency	60 Hz
Current	1.9 A	Power Factor	68
Duty	Continuous	Insulation Class	F
Design Code	B	KVA Code	K
Drive End Bearing Size	6206	Opp Drive End Bearing Size	6206
UL	Recognized	CSA	Y
CE	Y	IP Code	43
Number of Speeds	1		


Technical Specifications

Electrical Type	Squirrel Cage Inverter Rated	Starting Method	Line Or Inverter
Poles	6	Rotation	Reversible
Resistance Main	4.65 Ohms	Mounting	Rigid Base
Motor Orientation	Horizontal	Drive End Bearing	Ball
Opp Drive End Bearing	Ball	Frame Material	Cast Iron
Shaft Type	IEC	Overall Length	16.33 in
Shaft Diameter	1.111 in	Shaft Extension	2.36 in
Assembly/Box Mounting	F3	Inverter Load	CONSTANT 2:1
Outline Drawing	SS622236-DF100L-6R	Connection Drawing	005102.01

SS622236

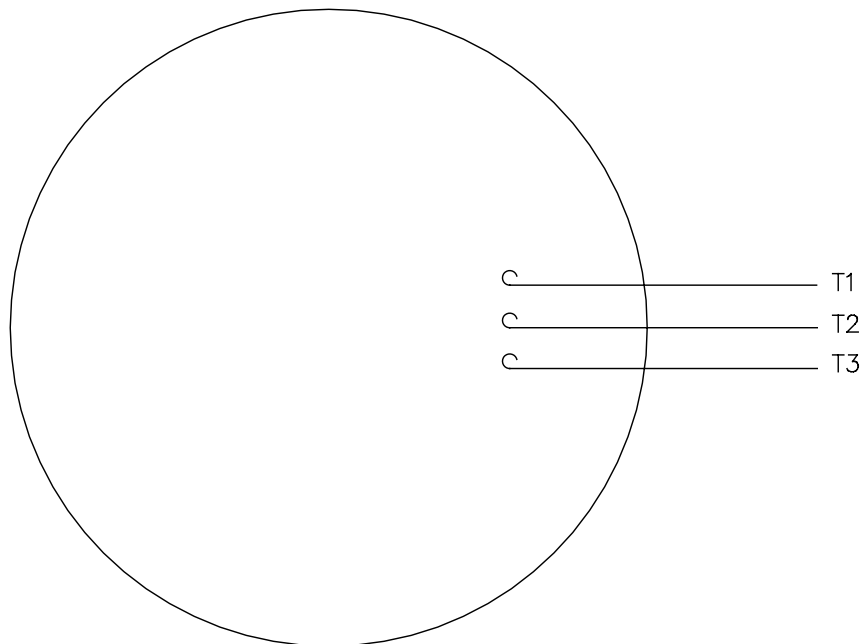


DF100L-2R	193303.60
DF100L1-4R	193301.60
DF100L2-4R	193304.60
DF100L-6R	193300.60
FRAME	PART #

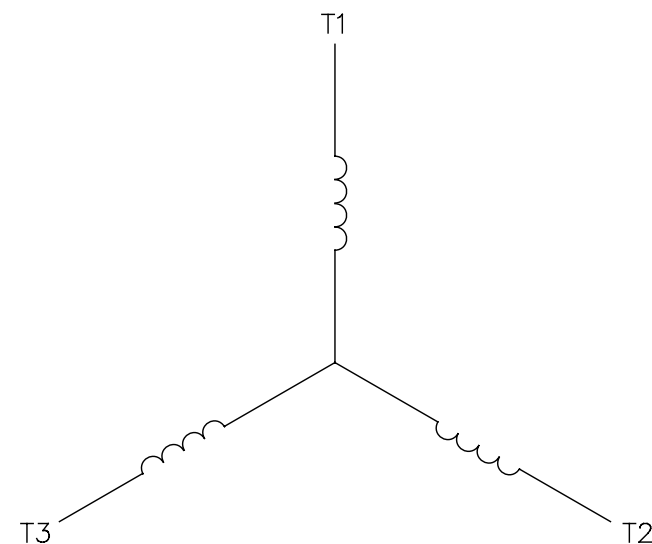
				TOLERANCES UNLESS SPECIFIED		<div> Regal-Beloit Corporation</div>			DRAWN					
				DEC.	INCHES				CHK					
				.X	±.1				APPD					
				.XX	±.03	TITLE			OUTLINE			SCALE		
				.XXX	±.005							REF		
				.XXXX	±.0005	MAT'L.						FMF		
NO.	REVISION		BY & DATE		CHK							ANG	±1/2	FINISH
THIS DRAWING IN DESIGN AND DETAIL IS OUR PROPERTY AND MUST NOT BE USED EXCEPT IN CONNECTION WITH OUR WORK ALL RIGHTS OF DESIGN AND INVENTION ARE RESERVED THIS IS AN ELECTRONICALLY GENERATED DOCUMENT – DO NOT SCALE THIS PRINT					RFP			CAD FILE			SIZE	DRAWING NO.		REV.
					DIST						B	SS622236		

005102-01


VIEW FROM OUTSIDE OF MOTOR AT SWITCH END.



LINE LEADS

CONNECT LEADS AS FOLLOWS
FOR FOUR CONDUCTOR CORD ()

CORD	L1 (RED)	L2 (WHITE)	L3 (BLACK)	(GREEN)
MOTOR	T1	T2	T3	GROUND

				TOLERANCES UNLESS SPECIFIED		 Regal Beloit America, Inc.		DRAWN	JRW 9/11/75
				DEC.	INCHES			CHK	
				.X	±.1			APPD	JCW 9/11/75
08	UPDATED TO REGAL LOGO	SAJ 06/26/15	AJY	.XX	±.01	TITLE EXTERNAL WIRING DIAGRAM TYPE "T" W/O PROTECTOR		SCALE	1=1
07	UPDATED TO CURRENT STANDARDS	DBT 5/30/97		.XXX	±.005			REF	W-T6343-6
06	REDRAWN ON CAD; ADDED DECAL NUMBER	SAW 1/24/95		.XXXX	±.0005			FMF	6T17FB7
NO.	REVISION	BY & DATE	CHK	ANG	±1/2"	FINISH		PREV	
THIS DRAWING IN DESIGN AND DETAIL IS OUR PROPERTY AND MUST NOT BE USED EXCEPT IN CONNECTION WITH OUR WORK ALL RIGHTS OF DESIGN AND INVENTION ARE RESERVED THIS IS AN ELECTRONICALLY GENERATED DOCUMENT - DO NOT SCALE THIS PRINT			RFP	5/1/02	CAD FILE	00510201	SIZE	DRAWING NO.	REV.
			DIST	BRF-NLV			A	005102-01	08



P.O. BOX 8003
WAUSAU, WI 54401-8003
PH. 715-675-3311

DATA VOLTS: 460

CERTIFICATION DATA SHEET

CUSTOMER: _____
ORDER #: _____
CONN. DIAGRAM: 005102.01
OUTLINE: SS622236
WINDING: T08706009 NONE 4
SPEED: _____

CUSTOMER P.O. #: _____
REFERENCE MODEL #: 100LTFC6577
CAT #: #VALUE!
CUSTOMER PART #: _____
MOUNTING: F3

TYPICAL MOTOR PERFORMANCE DATA

HP	KW	SYNC RPM	FL RPM	FRAME	ENCLOSURE	TYPE	KVA CODE	DESIGN
1.5	1.1	1200	1185	100L	TEFC	TFC	K	B

PH	HZ	VOLTS	AMPS	START TYPE	DUTY	INSL	S.F.	AMB	ELEV.
3	60	575	1.85	LINE OR INVERTER	CONT	F	1.15	40	3300

F.L. EFF	87.5	3/4 LD EFF	87.5	1/2 LD EFF	84.0	GTD EFF		ELECT. TYPE	
F.L. PF	68.0	3/4 LD PF	60.0	1/2 LD PF	47.0	86.5		SQ CAGE INV RATED	

F.L. TORQUE	LR AMPS @ 460 V	L.R. TORQUE	B.D. TORQUE	F.L. RISE (°C)	
6.6 LB-FT	12.8	13.5 LB-FT 205%	22.7 LB-FT 344%	35	

@ 3 FT.	POWER	ROTOR WK ²	MAX. LOAD WK ²	SAFE STALL TIME	STARTS/HOUR	MOTOR WGT
50 dBA	59 dBA	0.00 LB-FT ²	0 LB-FT ²	20 SEC.	2	90 LB.

*** SUPPLEMENTAL INFORMATION ***

DE BRACKET TYPE	ODE BRACKET TYPE	MOUNT TYPE	MOTOR ORIENTATION	SEVERE DUTY	HAZARDOUS LOCATION	DRIP COVER	SCREENS	PAINT
STANDARD	STANDARD	RIGID	HORIZONTAL	NO	NONE	NO	NONE	BLUE (ENAMEL)

BEARINGS	GREASE	SHAFT TYPE	SPECIAL DE	SPECIAL ODE	SHAFT MATERIAL	FRAME MATERIAL
DE ODE						
BALL BALL	POLYREX EM	STANDARD IEC	NONE	NONE	AISI 1045 (C-240)	CAST IRON
6206 6206						

THERMOSTATS	PROTECTORS	WDG RTD's	BRG RTD's	THERMISTORS	CONTROL	SPACE HEATERS
NONE	NOT	NONE	NONE	NONE	FALSE	NA

R1 (ohms/ph)	R2 (ohms/ph)	X1 (ohms/ph)	X2 (ohms/ph)	Xm (ohms/ph)	VIBRATION (in/sec)	FLOAT
4.216	2.441	14.644	20.191	244.063	0.150	ODE

* N O T E S *		INVERTER TORQUE: CONSTANT 2:1 INV. HP SPEED RANGE: 1.5 X BASE SPEED
		ENCODER: NONE NONE NONE NONE PPR
PREPARED BY: EARL BABBITTS DATE: 5/5/2017		BRAKE: NONE NONE NONE FT-LB: NA VOLTAGE: NONE H2:
FORM: 3531 REV_4 2/27/06		UL: Y-(LEESON UL REC)

Data Sheet

Date: 5/5/2017

Customer: _____

Attention: _____

Submitted by: EARL BABBITTS

100LTC6577



Submittal

Data @ 575 V

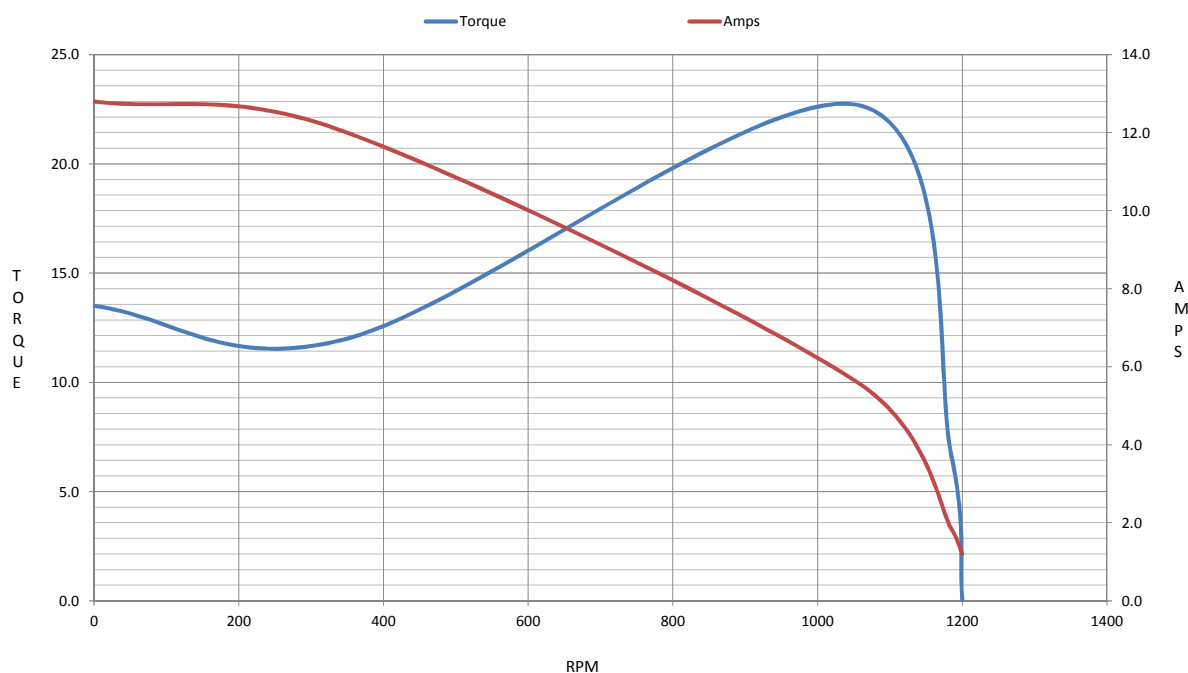
Motor Load Data

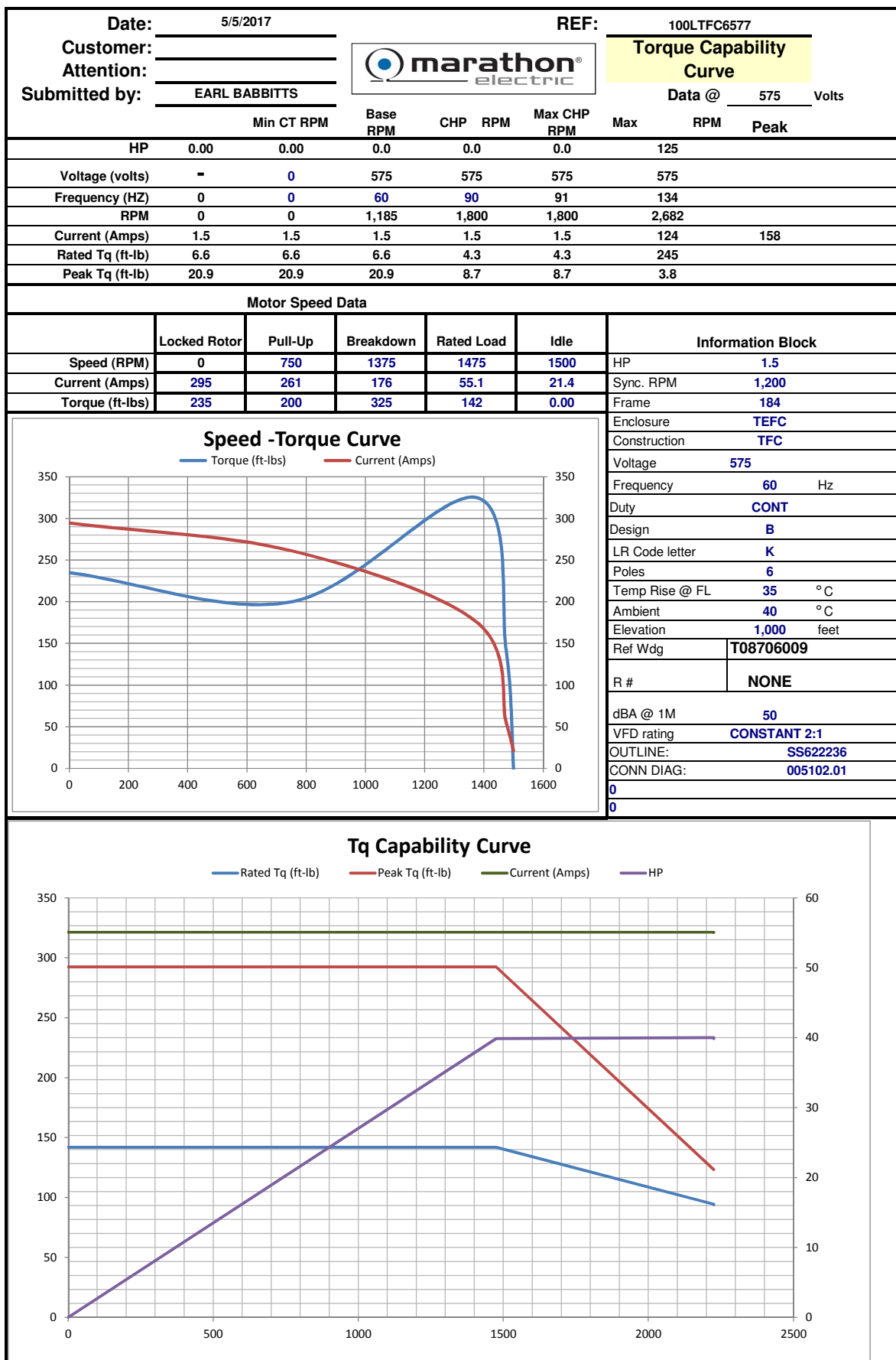
Load	0%	25%	50%	75%	100%	115%	125%	LR	
Current (Amps)	1.20	1.28	1.44	1.60	1.84	2.08	2.24	12.8	
Torque (ft-lb)	0.00	1.60	3.3	5.0	6.6	7.6	8.4	13.5	
RPM	1200	1196	1192	1188	1185	1,182	1178	0	
Efficiency (%)		76.5	84.0	87.5	87.5	87.5	87.5		
P.F. (%)	6.5	28.5	47.0	60.0	68.0	70.0	73.0	42.5	

Motor Speed Data

	LR	Pull-Up	BD	Rated	Idle	Information Block	
Speed (RPM)	0	350	1055	1185	1200	HP	1.5
Current (Amps)	12.8	12.0	5.6	1.84	1.20	Sync. RPM	1200
Torque (ft-lb)	13.5	12.0	22.7	6.6	0.00	Frame	184
						Enclosure	TEFC
						Construction	TFC
						Voltage	575 V
						Frequency	60 Hz
						Design	B
						LR Code letter	K
						Service Factor	1.15
						Temp Rise @ FL	35 °C
						Duty	CONT
						Ambient	40 °C
						Elevation	1,000 feet
						Rotor/Shaft wk ²	0.00 Lb-Ft ²
						Ref Wdg	T08706009 NONE
						Sound Pressure @ 1M	50 dBA
						VFD Rating	CONSTANT 2:1
						Outline Dwg	SS622236
						Conn. Diag	005102.01
Additional Specifications:							
0							
0							
EQUIV CKT (OHMS / PHASE)							
	R1	R2	X1	X2	Xm		
	4.2160	2.4410	14.6440	20.1910	244.0630		

Speed - Torque Curve





EC Declaration of Conformity

The undersigned representing
the manufacturer:

Regal Beloit America
100 East Randolph St.
Wausau, WI 54401

and the authorized representative
established within the Community:

Marathon Electric UK
6F Thistleton Road Ind. Estate
Market Overton
Oakham, Rutland LE15 7PP UK

are committed to providing customers with products that comply with applicable regulations and international protocols to which they are subject, including the requirements of the European Parliament Directive on the Harmonization of the laws relating to electrical equipment designed for use within certain voltage limits (2014/35/EU).

Regal Beloit America declares that the following product(s), to which this declaration relates, are in conformity with the relevant sections of the EC standards listed below.

This statement supersedes any statements previously issued pertaining to the product(s) listed below and is subject to change without notice.

Model No : 100LTFC6577

(Model No. may contain prefix and/or suffix characters)

Catalog No : R420A

Rework No : N/A

Directives :

Low Voltage Directive 2014/35/EU

Harmonized Standards Used :

EN 60034-1: 2010 (IEC 60034-1: 2010)

EN 60034-5: 2001/A1:2007 (IEC 60034-5: 2000/A1:2006)

Authorized Representative:



Michael A. Logsdon
Vice President, Technology

Authorized Representative in the Community:



Julian Clark
Marketing Engineer

Created on 09/01/2022

CE 22