

PRODUCT INFORMATION PACKET

marathon®
Motors

Model No: 100LTFC6527

Catalog No: R422A

3 HP, Cast Iron Motors, 3 phase, 1800 RPM, 575 V, 100L Frame, TEFC
Cast Iron Motors



Regal and Marathon are trademarks of Regal Rexnord Corporation or one of its affiliated companies.
©2021 Regal Rexnord Corporation, All Rights Reserved. MC017097E

RegalRexnord

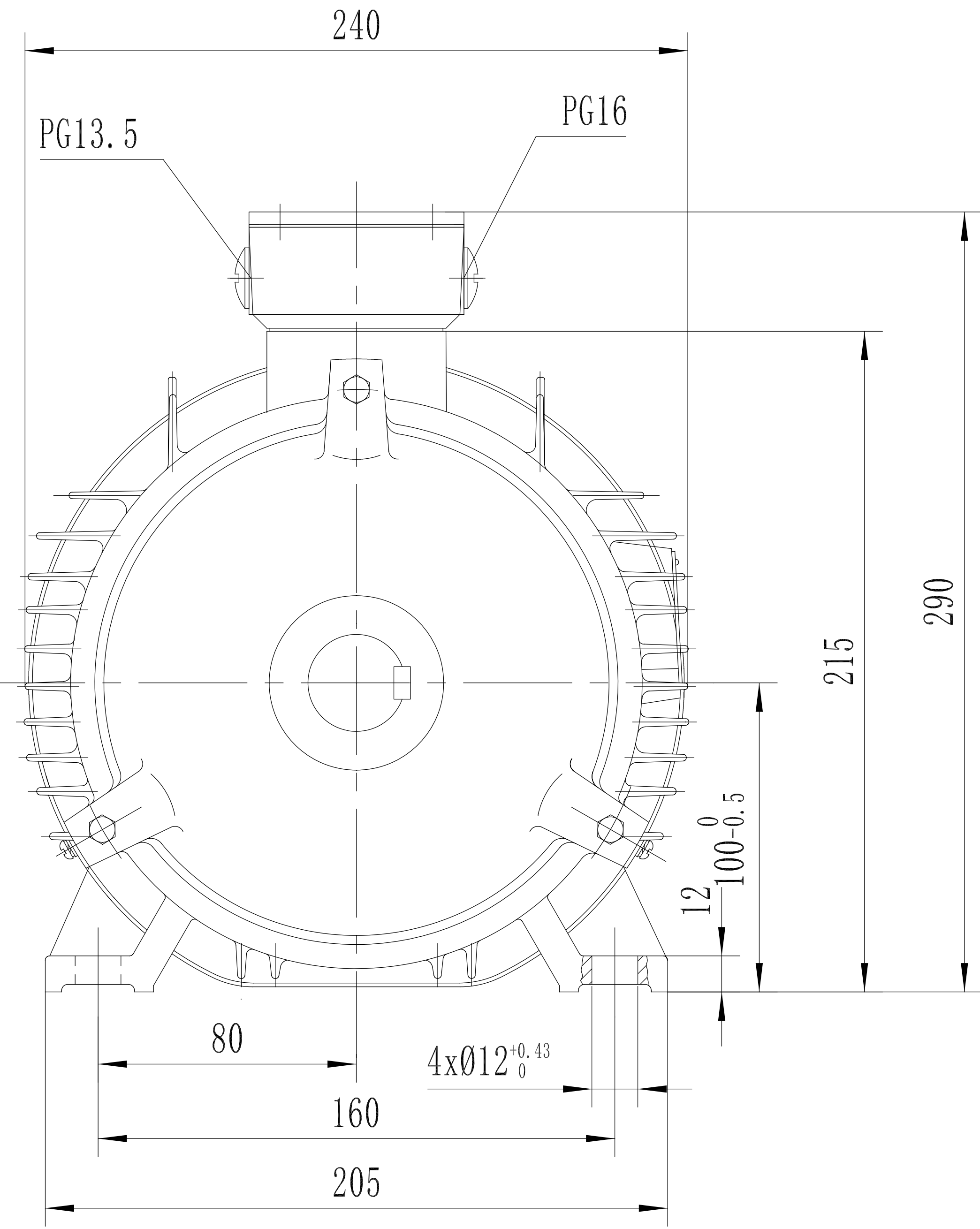
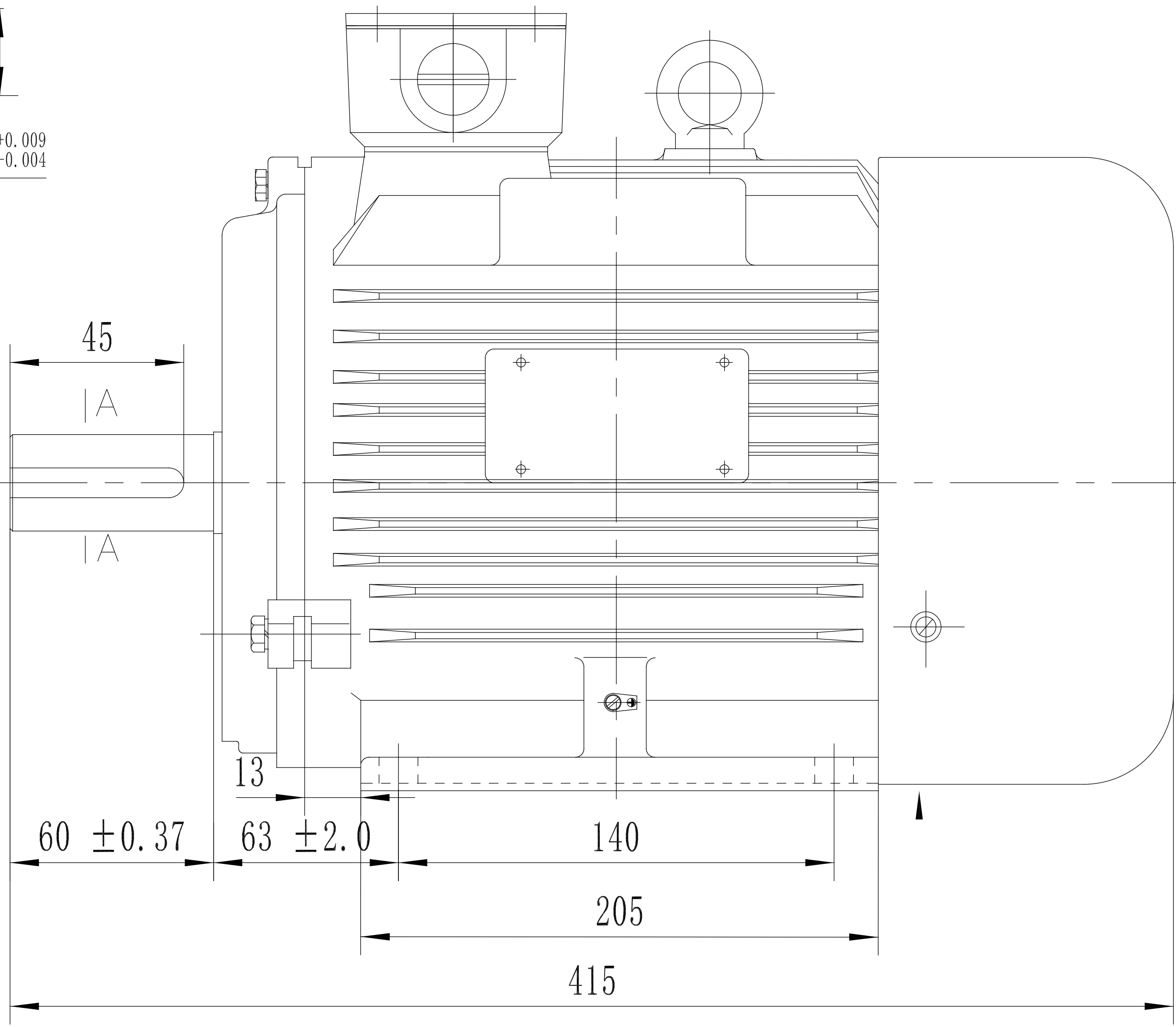
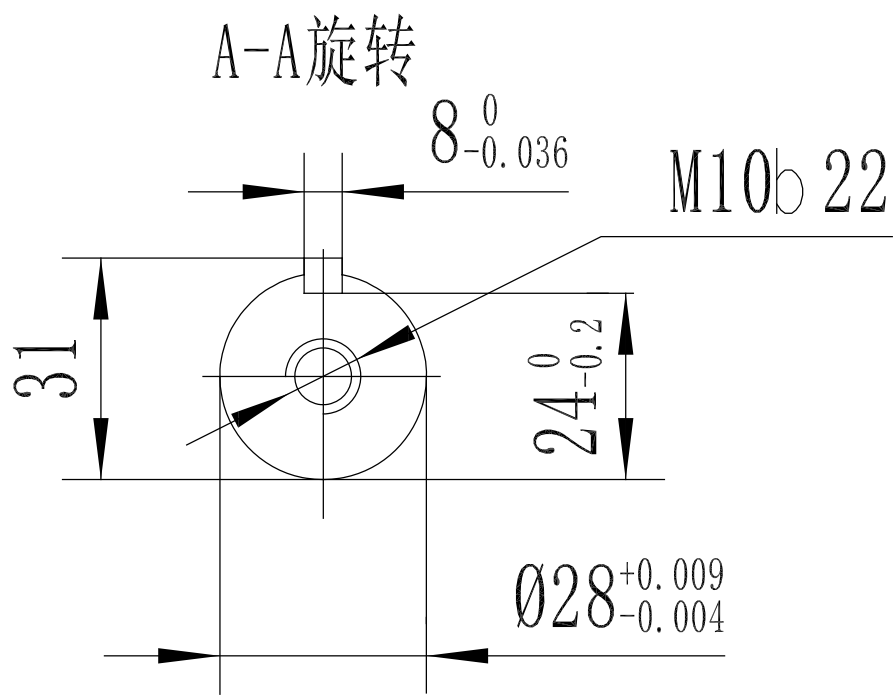
Nameplate Specifications

Output HP	3 Hp	Output KW	2.2 kW
Frequency	60 Hz	Voltage	575 V
Current	3.2 A	Speed	1770 rpm
Service Factor	1.15	Phase	3
Efficiency	90.2 %	Power Factor	79.5
Duty	Continuous	Insulation Class	F
Design Code	B	KVA Code	J
Frame	100L	Enclosure	Totally Enclosed Fan Cooled
Thermal Protection	No	Ambient Temperature	40 °C
Drive End Bearing Size	6206	Opp Drive End Bearing Size	6205
UL	Recognized	CSA	Y
CE	Y	IP Code	55
Number of Speeds	1		


Technical Specifications

Electrical Type	Squirrel Cage Inverter Rated	Starting Method	Line Or Inverter
Poles	4	Rotation	Reversible
Mounting	Rigid Base	Motor Orientation	Horizontal
Drive End Bearing	Ball	Opp Drive End Bearing	Ball
Frame Material	Cast Iron	Shaft Type	IEC
Overall Length	16.33 in	Shaft Diameter	1.111 in
Shaft Extension	2.36 in	Assembly/Box Mounting	F3
Outline Drawing	SS622236-DF100L1-4R	Connection Drawing	00510201ME

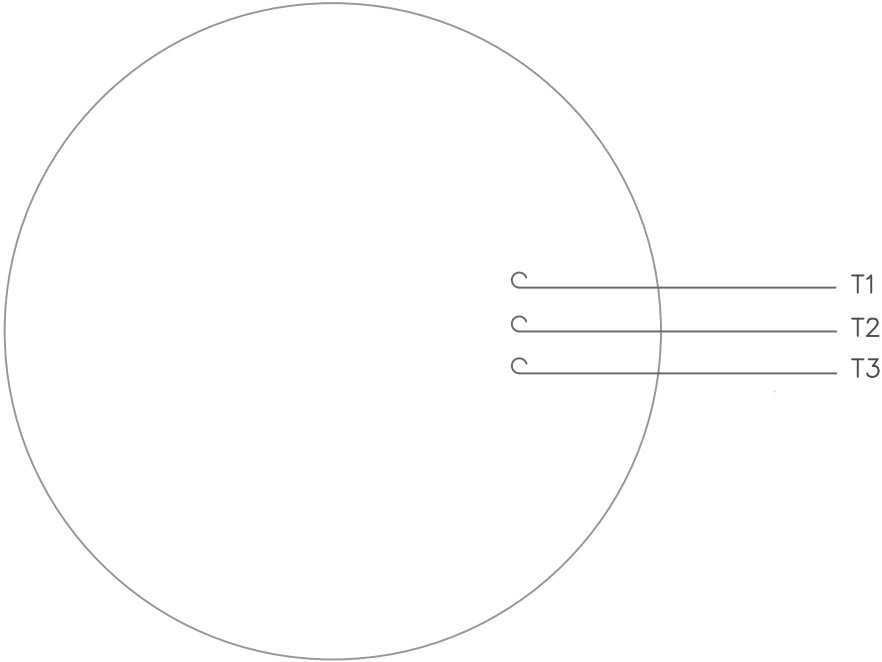
This is an uncontrolled document once printed or downloaded and is subject to change without notice. Date Created:11/30/2021



DF100L-2R	193303.60
DF100L1-4R	193301.60
DF100L2-4R	193304.60
DF100L-6R	193300.60
FRAME	PART #


				TOLERANCES UNLESS SPECIFIED		<div> Regal-Beloit Corporation</div>			DRAWN		
				DEC.	INCHES				CHK		
				.X	±.1				APPD		
				.XX	±.03	TITLEOUTLINE			SCALE		
				.XXX	±.005				REF		
				.XXXX	±.0005	MAT'L.			FMF		
NO.	REVISION	BY & DATE	CHK	ANG	±1/2	FINISH			PREV		
THIS DRAWING IN DESIGN AND DETAIL IS OUR PROPERTY AND MUST NOT BE USED EXCEPT IN CONNECTION WITH OUR WORK ALL RIGHTS OF DESIGN AND INVENTION ARE RESERVED THIS IS AN ELECTRONICALLY GENERATED DOCUMENT – DO NOT SCALE THIS PRINT			RFP			CAD FILE			SIZE	DRAWING NO.	REV.
			DIST						B	SS622236	

VIEW FROM OUTSIDE OF MOTOR AT SWITCH END.



CONNECT LEADS AS FOLLOWS
FOR FOUR CONDUCTOR CORD ()

CORD	L1 (RED)	L2 (WHITE)	L3 (BLACK)	(GREEN)
MOTOR	T1	T2	T3	GROUND

				TOLERANCES UNLESS SPECIFIED			DRAWN RDW 5/1/02		
				DEC.	INCHES		CHK		
				.X	±.1		APPD		
				.XX	±.01		SCALE 1=1		
				.XXX	±.005	TITLE EXTERNAL WIRING DIAGRAM TYPE "T" W/O PROTECTOR		REF	
				.XXXX	±.0005	MAT'L. DECAL - 004169		FMF	
NO.	REVISION	BY & DATE	CHK	ANG	±1/2°	FINISH		PREV	
THIS DRAWING IN DESIGN AND DETAIL IS OUR PROPERTY AND MUST NOT BE USED EXCEPT IN CONNECTION WITH OUR WORK ALL RIGHTS OF DESIGN AND INVENTION ARE RESERVED THIS IS AN ELECTRONICALLY GENERATED DOCUMENT - DO NOT SCALE THIS PRINT			RFP 5/1/02		CAD FILE 00510201ME		SIZE A	DRAWING NO. 005102-01ME	REV.
			DIST						

CERTIFICATION DATA SHEET

Model#: 100LTC6527 AA
 CONN. DIAGRAM: 00510201ME
 OUTLINE: SS622236

WINDING#: T08704010 NONE 4
 ASSEMBLY: F3

TYPICAL MOTOR PERFORMANCE DATA

HP	KW	SYNC. RPM	F.L. RPM	FRAME	ENCLOSURE	KVA CODE	DESIGN
3	2.24	1800	1770	100L	TEFC	J	B

PH	Hz	VOLTS	FL AMPS	START TYPE	DUTY	INSL	S.F	AMB°C	ELEVATION
3	60	575	3.2	LINE OR INVERTER	CONTINUOU S	F2	1.15	40	3300

FULL LOAD EFF: 90.2	3/4 LOAD EFF: 89.5	1/2 LOAD EFF: 88.5	GTD. EFF	ELEC. TYPE	NO LOAD AMPS
FULL LOAD PF: 79.5	3/4 LOAD PF: 73.5	1/2 LOAD PF: 62	89.5	SQ CAGE INV RATED	1.6

F.L. TORQUE	LOCKED ROTOR AMPS	L.R. TORQUE	B.D. TORQUE	F.L. RISE°C
8.9 LB-FT	23.5	19.5 LB-FT 218	32.7 LB-FT 367	25

SOUND PRESSURE @ 3 FT.	SOUND POWER	ROTOR WK^2	MAX. WK^2	SAFE STALL TIME	STARTS /HOUR	APPROX. MOTOR WGT
- dBA	- dBA	0.335 LB-FT^2	0.3 LB-FT^2	15 SEC.	2	- LBS.

*** SUPPLEMENTAL INFORMATION ***

DE BRACKET TYPE	ODE BRACKET TYPE	MOUNT TYPE	ORIENTATION	SEVERE DUTY	HAZARDOUS LOCATION	DRIP COVER	SCREENS	PAINT
STANDARD	STANDARD	RIGID	HORIZONTAL	FALSE	NONE	FALSE	NONE	BLUE (ENAMEL)

BEARINGS		GREASE	SHAFT TYPE	SPECIAL DE	SPECIAL ODE	SHAFT MATERIAL	FRAME MATERIAL
DE	OPE						
BALL	BALL						
6206	6205	POLYREX EM	STANDARD IEC	NONE	NONE	AINI 1045 (C-240)	CAST IRON

THERMO-PROTECTORS				THERMISTORS	CONTROL	SPACE /n HEATERS
THERMOSTATS	PROTECTORS	WDG RTDs	BRG RTDs			
NONE	NOT	NONE	NONE	NONE	FALSE	NONE VOLTS

If Inverter equals NONE, contact factory for further information

INVERTER TORQUE: CONSTANT 20:1

INV. HP SPEED RANGE: 1.5 X BASE SPEED

ENCODER: NONE

NONE NONE

NONE NONE PPR

BRAKE: NONE NONE

NONE P/N NONE

NONE NONE

NONE FT-LB NONE V NONE Hz

*
N
O
T
E
S
*

DATE: 06/22/2017 04:20:06 AM

FORM 3531 REV.3 02/07/99

** Subject to change without notice.

Data Sheet

Date: 11/27/2018

Customer: _____

Attention: _____

Submitted by: FAREEDA DUDEKULA



100LTFC6527

Submittal

Data @ 575 V

Motor Load Data

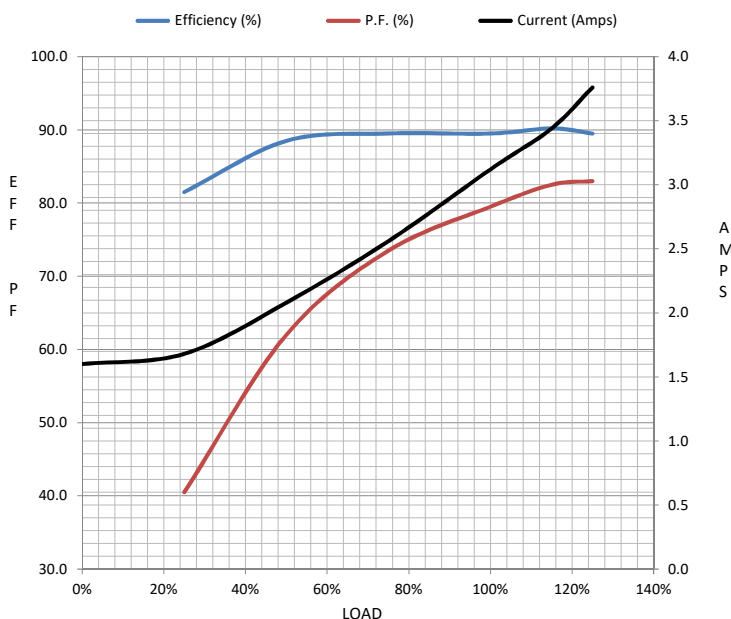
Load	0%	25%	50%	75%	100%	115%	125%	LR	
Current (Amps)	1.60	1.68	2.08	2.56	3.1	3.4	3.8	23.5	
Torque (ft-lb)	0.00	2.20	4.4	6.7	8.9	10.3	11.2	19.5	
RPM	1800	1795	1785	1775	1770	1,765	1760	0	
Efficiency (%)		81.5	88.5	89.5	89.5	90.2	89.5		
P.F. (%)	7.5	40.5	62.0	73.5	79.5	82.5	83.0	36.0	

Motor Speed Data

	LR	Pull-Up	BD	Rated	Idle
Speed (RPM)	0	375	1575	1770	1800
Current (Amps)	23.5	20.8	14.6	3.1	1.60
Torque (ft-lb)	19.5	15.0	32.7	8.9	0.00

Information Block

HP	3.0			
Sync. RPM	1800			
Frame	100L			
Enclosure	TEFC			
Construction	TFC			
Voltage	575 V			
Frequency	60 Hz			
Design	B			
LR Code letter	J			
Service Factor	1.15			
Temp Rise @ FL	28 °C			
Duty	CONT			
Ambient	40 °C			
Elevation	1,000 feet			
Rotor/Shaft wk²	0.34 Lb-Ft²			
Ref Wdg	T08704010 NONE			
Sound Pressure @ 1M	999 dBA			
VFD Rating	CONSTANT 20:1			
Outline Dwg	SS622236			
Conn. Diag	5102			
Additional Specifications:				
0				
0				
EQUIV CKT (OHMS / PHASE)				
R1	R2	X1	X2	Xm
0.0000	0.0000	0.0000	0.0000	0.0000



Speed -Torque Curve

