

PRODUCT INFORMATION PACKET

Model No: 9210H

Catalog No: 9210H

1/15-1/20-1/25 HP Refrigeration Motor, 1550 RPM, 1 Speed, 230 Volts, 3.3" Mount, TEAO



Regal and are trademarks of Regal Rexnord Corporation or one of its affiliated companies.
©2022 Regal Rexnord Corporation, All Rights Reserved. MC017097E

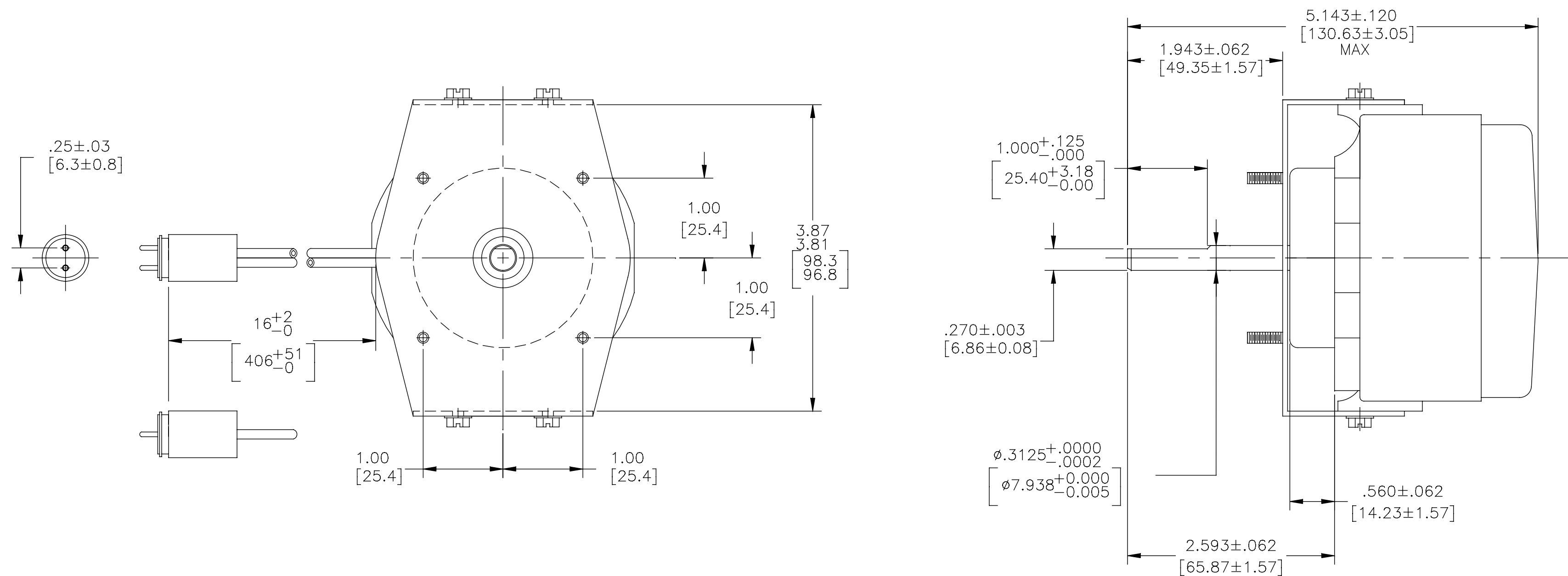
Nameplate Specifications

Output HP	1/15 Hp	Output KW	0.05 kW
Frequency	60 Hz	Voltage	230 V
Current	0.77 A	Speed	1550 rpm
Service Factor	1	Phase	1
Duty	Continuous	Insulation Class	A
Frame	UNIT BEARING	Enclosure	Totally Enclosed Air Over
Thermal Protection	Electronic	Ambient Temperature	40 °C
UL	Recognized	CSA	Y
CE	N	Number of Speeds	1

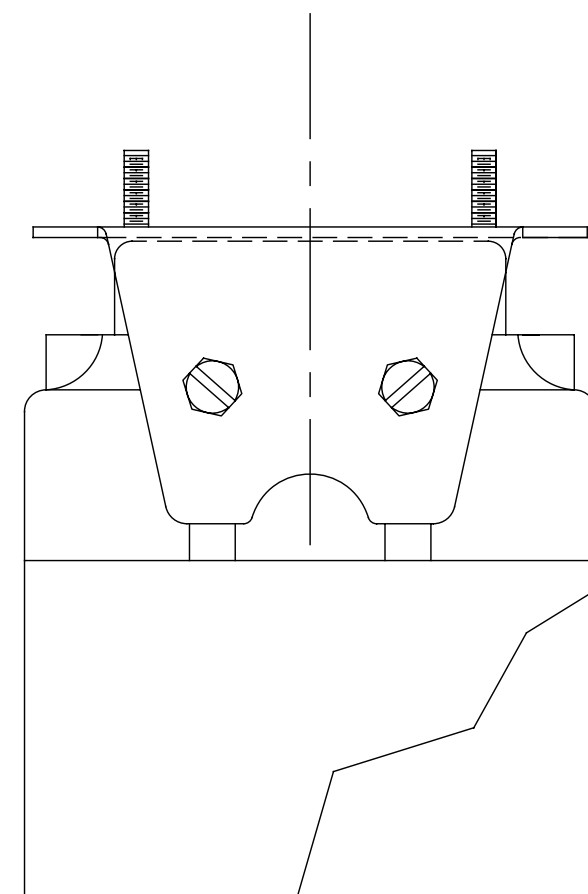
Technical Specifications

Electrical Type	Electronically Commutated Motor	Starting Method	Across The Line
Poles	4	Rotation	Clockwise Lead End
Mounting	Extended Studs	Drive End Bearing	Unit
Opp Drive End Bearing	Unit	Frame Material	Cast Iron
Shaft Type	Flat	Frame Length	3.20 in
Shaft Diameter	0.312 in	Shaft Extension	1.94 in
Outline Drawing	9210H-S01		

This is an uncontrolled document once printed or downloaded and is subject to change without notice. Date Created:09/08/2022

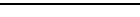


EMF CORP. PART #P-2-2
LYALL ELECTRIC
PART NO. M-2-44



NOTE:
OUTLINE DIMENSIONS FOR
WHICH NO LIMIT IS SPECIFIED
ARE NOMINAL AND NOT
GUARANTEED AS TO TOLERANCE
ADDITIONAL INFORMATION ON
TOLERANCE WILL BE FURNISHED
ON SPECIFIC REQUEST.

UTBEJ1552BJ
230V 60HZ CWSE/CCWOSE
CUST. 9210H

DRAWING REVISION D	REVISION BY J.Zhu	DATE 03-10-2016	TOLERANCES UNLESS OTHERWISE SPECIFIED	DRAWN BY: S.JIMENEZ	 Regal Beloit America, Inc.	
ECO ECO-0092758	APPROVED BY .	DATE .	DEC. mm INCH ANGLE .X ±2.5 [±0.10] ±0.5° .XX ±0.50 [±0.020] .XXX ±0.130 [±0.0051] .XXXX ±0.0130 [±0.00051] REMOVE BURRS & BREAK SHARP EDGES .08/.38 [0.03/.015] CORNER FILLETS .50 [0.20] MACHINED SURFACES $\frac{125}{\sqrt{}}$ $\frac{3.2}{\sqrt{}}$ INCH SHOWN IN [BRACKETS]	DATE: 03-10-2009 APPROVED BY: M.ARGUELLEZ DATE: 03-10-2009 REFERENCE		DESCRIPTION MODEL-SFHP-UB
ECO DESCRIPTION SEE ECO	<p>COPYRIGHT REGAL BELOIT AMERICA, INC. ALL RIGHTS RESERVED.</p> <p>PROPRIETARY AND CONFIDENTIAL INFORMATION - THIS DOCUMENT IS THE PROPERTY OF REGAL BELOIT AMERICA, INC. (OWNERS) AND CONTAINS OWNERS PROPRIETARY INFORMATION. ANY PERSON, CORPORATION OR OTHER FIRM RECEIVING IT IS DEEMED, BY RECEIVING IT, TO AGREE THAT IT, AND/OR ANY PART OF IT, SHALL NOT BE DISCLOSED TO ANY PERSON, CORPORATION OR OTHER ENTITY, DUPLICATED, AND/OR USED, EXCEPT AS EXPRESSLY APPROVED IN WRITING IN ADVANCE BY OWNER. THIS DOCUMENT SHALL BE RETURNED TO OWNER UPON REQUEST. IT MAY BE SUBJECT TO CERTAIN RESTRICTIONS UNDER APPLICABLE EXPORT CONTROL LAWS AND REGULATIONS.</p>				MATERIAL	PROCESS/FINISH
				THIRD ANGLE PROJECTION	SIZE DWG NO C 9210H	SHEET 1
				