

PRODUCT INFORMATION PACKET



Model No: 93094-64
Catalog No: 93094-64
A-93094-64 SHAFT GROUNDING RING (PRESS IN)

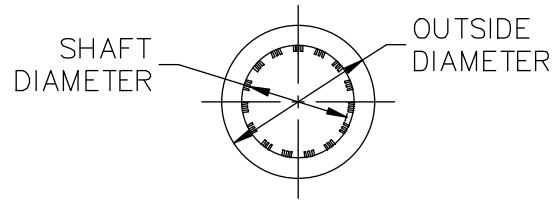
Regal and Marathon are trademarks of Regal Rexnord Corporation or one of its affiliated companies.
©2025 Regal Rexnord Corporation, All Rights Reserved. MC017097E



Nameplate Specifications

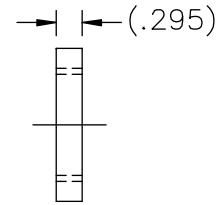
Technical Specifications

This is an uncontrolled document once printed or downloaded and is subject to change without notice. Date Created:04/05/2025




NOTE:

SGR O.D. = $+0.01 - .001$ "
MIN. BORE DEPTH = .25"



DASH	MIN. SHAFT DIA. INCHES	MAX. SHAFT DIA. INCHES	SGR OD INCHES	MOTOR BRACKET BORE DIA. INCHES	VENDOR'S CATALOG NUMBER
1	.311	.355	1.579-1.58	1.575 - 1.577	SGR-6.9-0A6
2	.356	.395	1.579-1.58	1.575 - 1.577	SGR-8.0-0A6
3	.396	.435	1.579-1.58	1.575 - 1.577	SGR-9.0-0A6
4	.436	.48	1.579-1.58	1.575 - 1.577	SGR-10.1-0A6
5	.481	.52	1.579-1.58	1.575 - 1.577	SGR-11.2-0A6
6	.521	.56	1.579-1.58	1.575 - 1.577	SGR-12.2-0A6
7	.561	.605	1.579-1.58	1.575 - 1.577	SGR-13.2-0A6
8	.606	.645	1.579-1.58	1.575 - 1.577	SGR-14.4-0A6
9	.646	.685	2.079-2.08	2.075 - 2.077	SGR-15.4-0A6
10	.686	.73	2.079-2.08	2.075 - 2.077	SGR-16.4-0A6
11	.731	.774	2.079-2.08	2.075 - 2.077	SGR-17.6-0A6
12	.775	.815	2.079-2.08	2.075 - 2.077	SGR-18.7-0A6
13	.816	.855	2.079-2.08	2.075 - 2.077	SGR-19.7-0A6
14	.856	.895	2.079-2.08	2.075 - 2.077	SGR-20.7-0A6
15	.896	.935	2.079-2.08	2.075 - 2.077	SGR-21.7-0A6
16	.936	.98	2.079-2.08	2.075 - 2.077	SGR-22.8-0A6
17	.981	1.02	2.079-2.08	2.075 - 2.077	SGR-23.9-0A6
18	1.021	1.06	2.079-2.08	2.075 - 2.077	SGR-24.9-0A6
19	1.061	1.105	2.079-2.08	2.075 - 2.077	SGR-25.9-0A6
20	1.106	1.145	2.079-2.08	2.075 - 2.077	SGR-27.1-0A6
21	1.146	1.185	2.079-2.08	2.075 - 2.077	SGR-28.1-0A6
22	1.186	1.23	2.079-2.08	2.075 - 2.077	SGR-29.1-0A6
23	1.231	1.27	2.079-2.08	2.075 - 2.077	SGR-30.3-0A6
24	1.271	1.31	2.079-2.08	2.075 - 2.077	SGR-31.3-0A6
25	1.311	1.355	2.079-2.08	2.075 - 2.077	SGR-32.3-0A6
26	1.356	1.395	2.079-2.08	2.075 - 2.077	SGR-33.4-0A6
27	1.396	1.435	2.659-2.66	2.655 - 2.657	SGR-34.4-0A6
28	1.436	1.48	2.659-2.66	2.655 - 2.657	SGR-35.5-0A6
29	1.481	1.52	2.659-2.66	2.655 - 2.657	SGR-36.6-0A6
30	1.521	1.56	2.659-2.66	2.655 - 2.657	SGR-37.6-0A6
31	1.561	1.605	2.659-2.66	2.655 - 2.657	SGR-38.6-0A6
32	1.606	1.645	2.659-2.66	2.655 - 2.657	SGR-39.8-0A6
33	1.646	1.685	2.659-2.66	2.655 - 2.657	SGR-40.8-0A6

DASH	MIN. SHAFT DIA. INCHES	MAX. SHAFT DIA. INCHES	SGR OD INCHES	MOTOR BRACKET BORE DIA. INCHES	VENDOR'S CATALOG NUMBER
34	1.686	1.73	2.659-2.66	2.655 - 2.657	SGR-41.8-0A6
35	1.731	1.77	2.659-2.66	2.655 - 2.657	SGR-43.0-0A6
36	1.771	1.81	2.659-2.66	2.655 - 2.657	SGR-44.0-0A6
37	1.811	1.855	2.659-2.66	2.655 - 2.657	SGR-45.0-0A6
38	1.856	1.895	2.659-2.66	2.655 - 2.657	SGR-46.1-0A6
39	1.896	1.935	2.659-2.66	2.655 - 2.657	SGR-47.1-0A6
40	1.936	1.98	2.659-2.66	2.655 - 2.657	SGR-48.2-0A6
41	1.981	2.02	2.659-2.66	2.655 - 2.657	SGR-49.3-0A6
42	2.021	2.06	3.079-3.08	3.075 - 3.077	SGR-50.3-0A6
43	2.061	2.105	3.079-3.08	3.075 - 3.077	SGR-51.3-0A6
44	2.106	2.145	3.079-3.08	3.075 - 3.077	SGR-52.5-0A6
45	2.146	2.185	3.079-3.08	3.075 - 3.077	SGR-53.5-0A6
46	2.186	2.23	3.079-3.08	3.075 - 3.077	SGR-54.5-0A6
47	2.231	2.27	3.079-3.08	3.075 - 3.077	SGR-55.7-0A6
48	2.271	2.31	3.079-3.08	3.075 - 3.077	SGR-56.7-0A6
49	2.311	2.355	3.079-3.08	3.075 - 3.077	SGR-57.7-0A6
50	2.356	2.395	3.079-3.08	3.075 - 3.077	SGR-58.8-0A6
51	2.396	2.435	3.579-3.58	3.575 - 3.577	SGR-59.8-0A6
52	2.436	2.48	3.579-3.58	3.575 - 3.577	SGR-60.9-0A6
53	2.481	2.52	3.579-3.58	3.575 - 3.577	SGR-62.0-0A6
54	2.521	2.56	3.579-3.58	3.575 - 3.577	SGR-63.0-0A6
55	2.561	2.605	3.579-3.58	3.575 - 3.577	SGR-64.0-0A6
56	2.606	2.645	3.579-3.58	3.575 - 3.577	SGR-65.2-0A6
57	2.646	2.685	3.579-3.58	3.575 - 3.577	SGR-66.2-0A6
58	2.686	2.73	3.579-3.58	3.575 - 3.577	SGR-67.2-0A6
59	2.731	2.77	3.579-3.58	3.575 - 3.577	SGR-68.4-0A6
60	2.771	2.81	3.579-3.58	3.575 - 3.577	SGR-69.4-0A6
61	2.811	2.855	3.579-3.58	3.575 - 3.577	SGR-70.4-0A6
62	2.856	2.895	3.579-3.58	3.575 - 3.577	SGR-71.5-0A6
63	2.896	2.935	4.079-4.08	4.075 - 4.077	SGR-72.5-0A6
64	2.936	2.98	4.079-4.08	4.075 - 4.077	SGR-73.6-0A6
65	2.981	3.02	4.079-4.08	4.075 - 4.077	SGR-74.7-0A6
66	3.021	3.06	4.079-4.08	4.075 - 4.077	SGR-75.7-0A6

6	THICKNESS UPDATED PER ECR - 0045039	UD 10/22/13	ST	TOLERANCES UNLESS SPECIFIED	 REGAL-BELOIT CORPORATION	DRAWN RWR 11-05-2007
5	ADDED REF DIM FOR THICKNESS ISAAC 11-4275	KBB 09-12-2011	EH	DEC. INCHES		CHK ML 12-10-2007
4	REMOVED MATL THKN RANGE FROM DIM ISSAC 11-4237	MOL 09-06-2011		.X ±.1		APPD GK 12-10-2007
3	REVISED SHAFT DIA. LOCATION ON PART 09-0434	MSG 02-05-2009	MSG	.XX ±.02		SCALE 1=2
2	CHANGED VENDOR'S PART NUMBERS 08-0717	RJW 05-14-2008		.XXX ±.005		REF
1	REVISED PART NUMBERS 08-0717	RJW 02-28-2008	ML	.XXXX ±.0005	MAT'L.	FMF DES.DEV
NO.	REVISION	BY & DATE	CHK	ANG ±7'30"	FINISH	PREV
THIS DRAWING IN DESIGN AND DETAIL IS OUR PROPERTY AND MUST NOT BE USED EXCEPT IN CONNECTION WITH OUR WORK ALL RIGHTS OF DESIGN AND INVENTION ARE RESERVED THIS IS AN ELECTRONICALLY GENERATED DOCUMENT - DO NOT SCALE THIS PRINT				RFP 12-10-2007	CAD FILE 93094	SIZE A
				DIST		DRAWING NO. 93094
						PAGE 1 OF 3
						REV. 6