

PRODUCT INFORMATION PACKET

marathon®
Motors

Model No: 93143-25
Catalog No: 93143-25
B-93143-25 ENCODER/AV850-CM-N-8-4-8-4-P-000

Regal and Marathon are trademarks of Regal Rexnord Corporation or one of its affiliated companies.
©2025 Regal Rexnord Corporation, All Rights Reserved. MC017097E

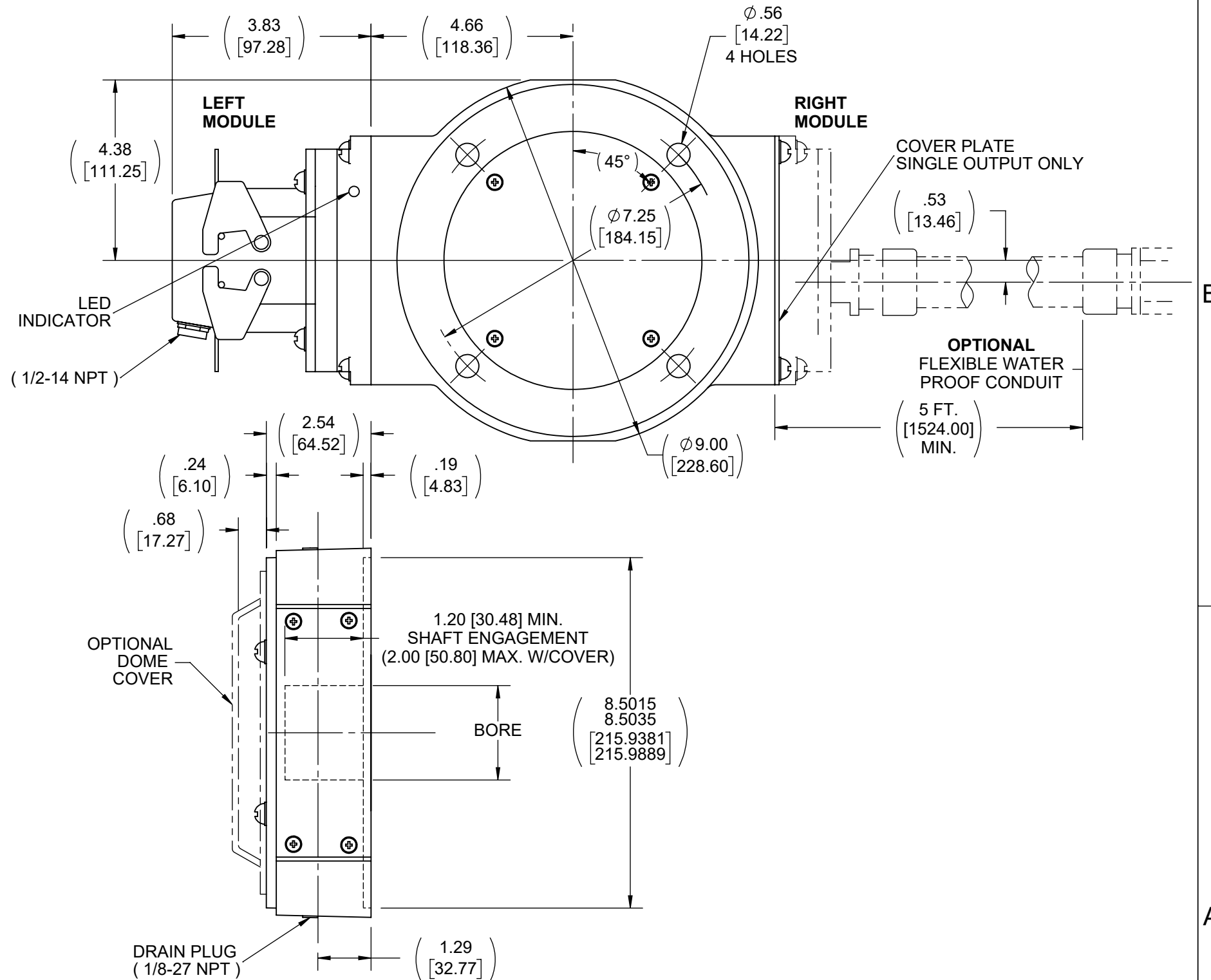
RegalRexnord

Nameplate Specifications

Technical Specifications

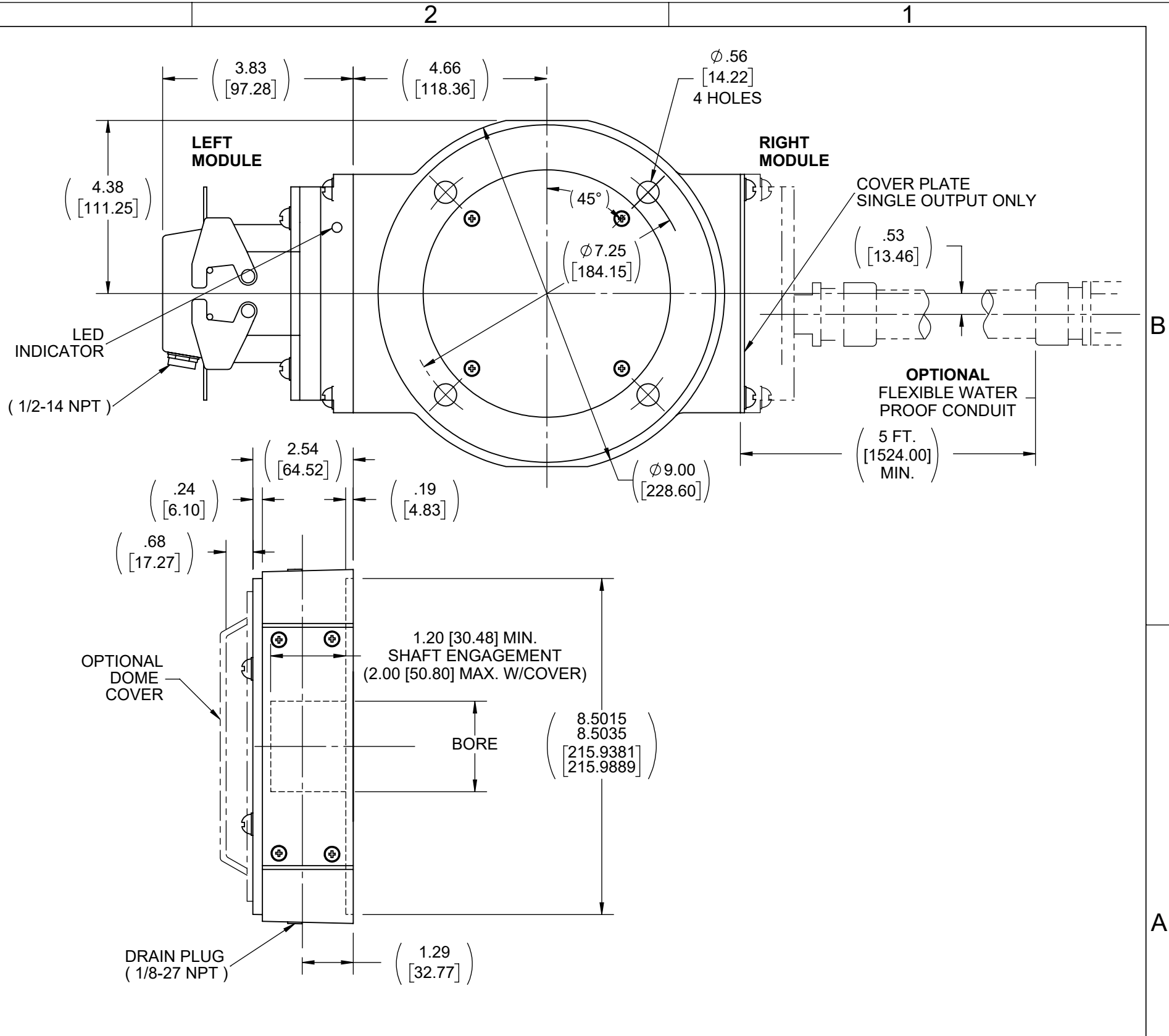
This is an uncontrolled document once printed or downloaded and is subject to change without notice. Date Created:04/05/2025

DASH	VENDOR	VENDOR PART	REMARKS	REV
-1	AVTRON	AV850-CJ-X-X-X-8-4-P-000	Ø 1.625 [41.275] THRU SHAFT	22
-2	AVTRON	AV850-CQ-F-6-Y-6-Y-P-000	Ø 2.250 [57.150] BLIND SHAFT	4 10-20-2008
-3	AVTRON	AV850-C2-F-8-Y-8-Y-P-000	Ø 2.875 [73.025] BLIND SHAFT	4 12-02-2008
-4	AVTRON	AV850-T6-T-8-Y-8-4-P-000	Ø 4.500 [114.300] THRU SHAFT	4 04-06-2009
-5	AVTRON	AV850-CQ-B-8-Y-8-Y-P-000	Ø 2.250 [57.150] THRU SHAFT	4 05-01-2009
-6	AVTRON	AV850-CQ-F-8-Y-8-Y-P-000	Ø 2.250 [57.150] BLIND SHAFT	4 05-06-2009
-7	AVTRON	AV850-CQ-N-8-Y-8-Y-B-000	Ø 2.250 [57.150] BLIND SHAFT	4 03-29-2010
-8	AVTRON	AV850-CT-T-8-Y-8-Y-W-000	Ø 2.625 [66.675] THRU SHAFT	4 06-18-2010
-9	AVTRON	AV850-CT-T-X-X-8-Y-P-000	Ø 2.625 [66.675] THRU SHAFT	4 06-23-2010
-10	AVTRON	AV850-CQ-N-X-X-8-Y-P-000	Ø 2.250 [57.150] BLIND SHAFT	4 09-07-2010
-11	AVTRON	AV850-CY-B-X-X-8-4-P-000	Ø 3.375 [85.725] THRU SHAFT	4 09-02-2011
-12	AVTRON	AV850-T6-N-X-X-8-Y-W-000	Ø 4.500 [114.300] BLIND SHAFT	5 08-30-2011
-13	AVTRON	AV850-C3-B-X-X-8-Y-W-000	Ø 3.500 [88.900] THRU SHAFT	5 03-28-2012
-14	AVTRON	AV850-T1-B-8-Y-8-Y-P-000	Ø 4.000 [101.600] THRU SHAFT	0 06-06-2012
-15	AVTRON	AV850-CY-B-8-Y-8-Y-P-000	Ø 3.375 [85.725] THRU SHAFT	0 06-28-2012
-16	AVTRON	AV850-C2-B-8-Y-8-Y-P-000	Ø 2.875 [73.025] THRU SHAFT	0 08-09-2012
-17	AVTRON	AV850-CT-N-8-Y-8-Y-P-000	Ø 2.625 [66.675] BLIND SHAFT	0 08-09-2012
-18	AVTRON	AV850-T6-N-8-Y-X-X-P-000	Ø 4.500 [114.300] BLIND SHAFT	0 08-13-2012
-19	AVTRON	AV850-T6-N-8-Y-8-Y-P-000	Ø 4.500 [114.300] BLIND SHAFT	0 08-24-2012
-20	AVTRON	AV850-CY-N-8-Y-8-Y-P-000	Ø 3.375 [85.725] BLIND SHAFT	1 10-17-2012
-21	AVTRON	AV850-TG-B-8-Y-8-Y-P-000	Ø 3.750 [95.250] THRU SHAFT	0 03-07-2013
-22	AVTRON	AV850-CJ-X-X-X-8-D-P-000	Ø 1.625 [41.275] THRU SHAFT	0 01-19-2013
-23	AVTRON	AV850-TD-B-8-4-8-4-P-000	Ø 3.625 [92.075] THRU SHAFT	0 10-21-2013
-24	AVTRON	AV850-CE-X-8-4-8-4-P-000	Ø 1.000 [25.400] THRU SHAFT	0 12-16-2013
-25	AVTRON	AV850-CM-N-8-4-8-4-P-000	Ø 2.000 [50.800] BLIND SHAFT	A 02-12-2014
-26	AVTRON	AV850-CM-B-8-4-8-4-P-000	Ø 2.000 [50.800] THRU SHAFT	A 02-21-2014
-27	AVTRON	AV850-CE-B-8-4-8-4-P-000	Ø 1.000 [25.400] THRU SHAFT	A 02-21-2014
-28	AVTRON	AV850-CE-N-8-4-8-4-P-000	Ø 1.000 [25.400] BLIND SHAFT	A 03-3-2014
-29	AVTRON	AV850-CE-F-8-Y-8-Y-P-000	Ø 1.000 [25.400] BLIND SHAFT	A 06-05-2014
-30	AVTRON	AV850-CE-F-8-Y-X-X-W-000	Ø 1.000 [25.400] BLIND SHAFT	A 03-25-2014
-31	AVTRON	AV850-C3-X-X-X-8-Y-P-000	Ø 3.500 [88.900] THRU SHAFT	A 02-06-2014
-32	AVTRON	AV850-C2-N-8-Y-8-Y-P-000	Ø 2.625 [66.675] BLIND SHAFT	A 05-16-2014
-33	AVTRON	AV850-T6-T-X-X-8-Y-P-000	Ø 4.500 [114.300] THRU SHAFT	A 05-27-2014
-34	AVTRON	AV850-T6-D-8-Y-X-X-P-000	Ø 4.500 [114.300] THRU SHAFT	A 05-22-2014
-35	AVTRON	AV850-TG-N-8-4-8-4-P-000	Ø 3.750 [95.250] THRU SHAFT	A 01-30-2015
-36	AVTRON	AV850-TD-B-8-4-8-4-P-000	Ø 3.625 [92.075] THRU SHAFT	A 01-22-2015
-37	AVTRON	AV850-T1-B-8-4-8-4-P-000	Ø 4.000 [101.600] THRU SHAFT	A 02-13-2015
-38	AVTRON	AV850-CW-B-8-4-8-4-P-000	Ø 3.250 [82.550] THRU SHAFT	A 03-11-2015
-39	AVTRON	AV850-CY-B-X-X-8-Y-W-000	Ø 3.375 [85.725] THRU SHAFT	A 07-13-2015
-40	AVTRON	AV850-CJ-B-8-Y-8-Y-P-000	Ø 1.625 [41.275] THRU SHAFT	A 07-21-2015
-41	AVTRON	AV850-T6-D-X-X-8-Y-P-000	Ø 4.500 [114.300] THRU SHAFT	A 08-20-2015
-42	AVTRON	AV850-CW-B-8-Y-X-X-W-000	Ø 3.250 [82.550] THRU SHAFT	A 10-21-2015
-43	AVTRON	AV850-T1-B-8-4-X-X-P-000	Ø 4.000 [101.600] THRU SHAFT	A 02-24-2016
-44	AVTRON	AV850-CF-B-8-Y-X-X-P-000	Ø 1.125 [28.575] THRU SHAFT	A 06-21-2016
-45	AVTRON	AV850-CY-N-8-4-X-X-P-000	Ø 3.375 [85.725] BLIND SHAFT	A 06-20-2016
-46	AVTRON	AV850-TH-B-8-Y-X-X-P-000	Ø 1.375 [34.925] THRU SHAFT	0 10-08-2016
-47	AVTRON	AV850-CY-N-X-X-8-Y-W-000	Ø 3.375 [85.725] BLIND SHAFT	A 10-18-2016
-48	AVTRON	AV850-TG-B-8-4-8-4-P-000	Ø 3.750 [95.250] THRU SHAFT	A 12-05-2016
-49	AVTRON	AV850-CJ-X-X-X-8-Y-P-000	Ø 1.625 [41.275] THRU SHAFT	A 09-15-2017
-50	AVTRON	AV850-T6-N-8-Y-8-Y-N-000	Ø 4.500 [114.300] BLIND SHAFT	A 12-11-2017
-51	AVTRON	AV850-C2-F-8-Y-8-Y-W-000	Ø 2.875 [73.025] THRU SHAFT	A 01-10-2018
-52	AVTRON	AV850-T6-N-8-Y-X-X-N-000	Ø 4.500 [114.300] BLIND SHAFT	A 04-20-2018



REV	DESCRIPTION	REVISION BY	REV DATE/© DATE	TOLERANCES (EXCEPT AS NOTED):	DRAWN BY	Regal Rexnord Regal Beloit America, Inc.	
0	ADDED DASH 84	DKB	09/25/2024	DEC. INCH mm ANGLE .X ±0.1 [±3] ±7° 30" .XX ±0.02 [±0.5] .XXX ±0.005 [±0.13] .XXXX ±0.0005 [±0.013]	MSG	ENCODER	
0	TEST NUMBER NMR-0230584	DKB	09/25/2024	REMOVE BURRS & BREAK SHARP EDGES: .003/.015 [08/38] X 45° CORNER FILLETS: R.02 [5] MACHINED SURFACES: 200 INCH/mm 5.1	DATE 02/13/2008	AVTRON AV850 "SMARTACH" SERIES	
0	TEST NUMBER DESCRIPTION			mm DIMENSIONS IN [BRACKETS] ARE FOR REFERENCE ONLY	APPROVED BY BW	DESCRIPTION	
0	TEST NUMBER DESCRIPTION				DATE 02/15/2008	MATERIAL PROCESS/FINISH	
0	TEST NUMBER DESCRIPTION				REFERENCE	DRAWING NUMBER 93143	
0	TEST NUMBER DESCRIPTION				THIRD ANGLE PROJECTION	SHEET 1 OF 2	

DASH	VENDOR	VENDOR PART	REMARKS	REV
-53	AVTRON	AV850-CP-B-8-4-X-X-P-000	Ø 2.375 [60.325] THRU SHAFT	A 08/06/2018
-54	AVTRON	AV850-CL-N-8-4-8-4-P-000	Ø 1.875 BLIND	A 09/21/2018
-55	AVTRON	AV850-TG-B-8-4-X-X-P-000	Ø 3.750 [95.250] THRU SHAFT	A 11/20/2018
-56	AVTRON	AV850-TG-N-8-4-X-X-P-000	Ø 3.750 [95.250] BLIND SHAFT	A 11/21/2018
-57	AVTRON	AV850-CE-F-8-Y-8-Y-G-000	Ø 1.000 [25.400] BLIND SHAFT	A 01/24/2019
-58	AVTRON	AV850-CM-F-8-Y-8-Y-G-000	Ø 2.000 [50.800] BLIND SHAFT	A 01/28/2019
-59	AVTRON	AV850-CY-N-X-X-8-Y-P-000	Ø 3.375 [85.725] BLIND SHAFT	B 01/29/2020
-60	AVTRON	AV850-TD-B-X-X-8-4-P-000	Ø 3.625 [92.075] THRU SHAFT	A 03/12/2020
-61	AVTRON	AV850-CY-N-X-X-8-S-P-000	Ø 3.375 [85.725] BLIND SHAFT	A 04/1/2020
-62	AVTRON	AV850-C3-B-8-S-X-X-P-000	Ø 3.500 [88.900] THRU SHAFT	A 03/18/2021
-63	AVTRON	AV850-C3-X-X-X-8-4-P-000	Ø 3.500 [88.900] THRU SHAFT	A 08/19/2021
-64	AVTRON	AV850-CY-B-X-X-8-Y-P-000	Ø 3.375 [85.725] THRU SHAFT	A 10/06/2021
-65	AVTRON	AV850-CM-N-X-X-8-Y-P-000	Ø 2.000 [50.800] BLIND SHAFT	A 12/06/2021
-66	AVTRON	AV850-C3-T-X-X-8-4-P-000	Ø 3.500 [88.900] THRU SHAFT	A 03/10/2022
-67	AVTRON	AV850-CF-F-8-Y-8-Y-P-004	Ø 1.125 [28.575] THRU SHAFT	0 07/25/2022
-68	AVTRON	AV850-CF-F-8-Y-X-X-C-004	Ø 1.125 [28.575] THRU SHAFT	0 07/25/2022
-69	AVTRON	AV850-CH-F-8-Y-X-X-P-004	Ø 1.375 [34.925] THRU SHAFT	0 07/25/2022
-70	AVTRON	AV850-CF-F-8-Y-X-X-P-004	Ø 1.125 [28.575] THRU SHAFT	0 07/25/2022
-71	AVTRON	AV850-CF-F-8-Y-8-R-P-004	Ø 1.125 [28.575] THRU SHAFT	0 07/25/2022
-72	AVTRON	AV850-CF-F-8-N-8-Y-P-004	Ø 1.125 [28.575] THRU SHAFT	0 07/25/2022
-73	AVTRON	AV850-CH-F-8-Y-8-Y-P-004	Ø 1.375 [34.925] THRU SHAFT	0 07/25/2022
-74	AVTRON	AV850-C2-F-6-Y-6-Y-P-004	Ø 2.875 [73.025] THRU SHAFT	0 07/25/2022
-75	AVTRON	AV850-CH-F-8-Y-8-Y-P-004	Ø 1.375 [34.925] THRU SHAFT	0 07/25/2022
-76	AVTRON	AV850-CF-F-8-Y-8-Y-P-004	Ø 1.125 [28.575] THRU SHAFT	0 07/25/2022
-77	AVTRON	AV850-CE-N-8-4-X-X-P-000	Ø 1.000 [25.400] BLIND SHAFT	0 10/18/2022
-78	AVTRON	AV850-CQ-T-8-4-X-X-P-000	Ø 2.250 [57.150] THRU SHAFT	0 12/23/2022
-79	AVTRON	AV850-CJ-T-8-Y-X-X-P-000	Ø 1.625 [41.275] THRU SHAFT	0 02/07/2023
-80	AVTRON	AV850-CT-T-8-Y-X-X-P-004	Ø 2.625 [66.675] THRU SHAFT	0 04/18/2023
-81	AVTRON	AV850-CQ-F-8-4-8-4-P-000	Ø 2.250 [57.150] THRU SHAFT	0 03/06/2024
-82	AVTRON	AV850-CM-F-8-4-8-4-P-000	Ø 2.000 [50.800] THRU SHAFT	0 03/15/2024
-83	AVTRON	AV850-CF-F-8-4-8-4-P-000	Ø 1.125 [28.575] THRU SHAFT	0 03/15/2024
-84	AVTRON	AV850-TD-B-X-X-8-Y-P-000	Ø 3.625 [92.075] THRU SHAFT	0 09/25/2024



DRAWING REVISION BW	REVISION BY DKB	REV DATE/© DATE 09/25/2024	TOLERANCES (EXCEPT AS NOTED): DEC. INCH mm ANGLE	DRAWN BY MSG	 Regal Beloit America, Inc.
REQUEST NUMBER NMR-0230584	APPROVED BY DKB	DATE 09/25/2024	.X ±0.1 [±3] ±7° 30" .XX ±0.02 [±0.5] .XXX ±0.005 [±0.13] .XXXX ±0.0005 [±0.013]	DATE 02/13/2008	
REQUEST NUMBER DESCRIPTION ADDED DASH 84			REMOVE BURRS & BREAK SHARP EDGES: .003/.015 [08/.38] X 45° CORNER FILLETS: R.02 [5] MACHINED SURFACES: 200 INCH/mm 5.1	APPROVED BY BW	DESCRIPTION ENCODER
COPYRIGHT (PER REVISION DATE) REGAL BELOIT AMERICA, INC. ALL RIGHTS RESERVED. PROPRIETARY AND CONFIDENTIAL INFORMATION - THIS DOCUMENT IS THE PROPERTY OF REGAL BELOIT AMERICA, INC. ("OWNER") AND CONTAINS OWNER'S PROPRIETARY INFORMATION. ANY PERSON, CORPORATION OR OTHER FIRM RECEIVING IT IS DEEMED, BY RECEIVING IT, TO AGREE THAT IT, AND/OR ANY PART OF IT, SHALL NOT BE DISCLOSED TO ANY PERSON, CORPORATION OR OTHER ENTITY, DUPLICATED, AND/OR USED, EXCEPT AS EXPRESSLY APPROVED IN WRITING IN ADVANCE BY OWNER. THIS DOCUMENT SHALL BE RETURNED TO OWNER UPON REQUEST. IT MAY BE SUBJECT TO CERTAIN RESTRICTIONS UNDER APPLICABLE EXPORT CONTROL LAWS AND REGULATIONS.				DATE 02/15/2008	AVTRON AV850 "SMARTACH" SERIES
			mm DIMENSIONS IN [BRACKETS] ARE FOR REFERENCE ONLY	REFERENCE	MATERIAL
				THIRD ANGLE PROJECTION	PROCESS/FINISH
				SIZE B	DRAWING NUMBER 93143
					SHEET 2 OF 2