

PRODUCT INFORMATION PACKET

marathon®
Motors

Model No: 100LTFC4501

Catalog No: R351

Cast Iron Motor, 4 & 4 HP, 3 Ph, 60 & 50 Hz, 230/460 & 200/400 V, 3600 & 3000 RPM, 100L Frame, TEFC



Regal and Marathon are trademarks of Regal Rexnord Corporation or one of its affiliated companies.

©2023 Regal Rexnord Corporation, All Rights Reserved. MC017097E

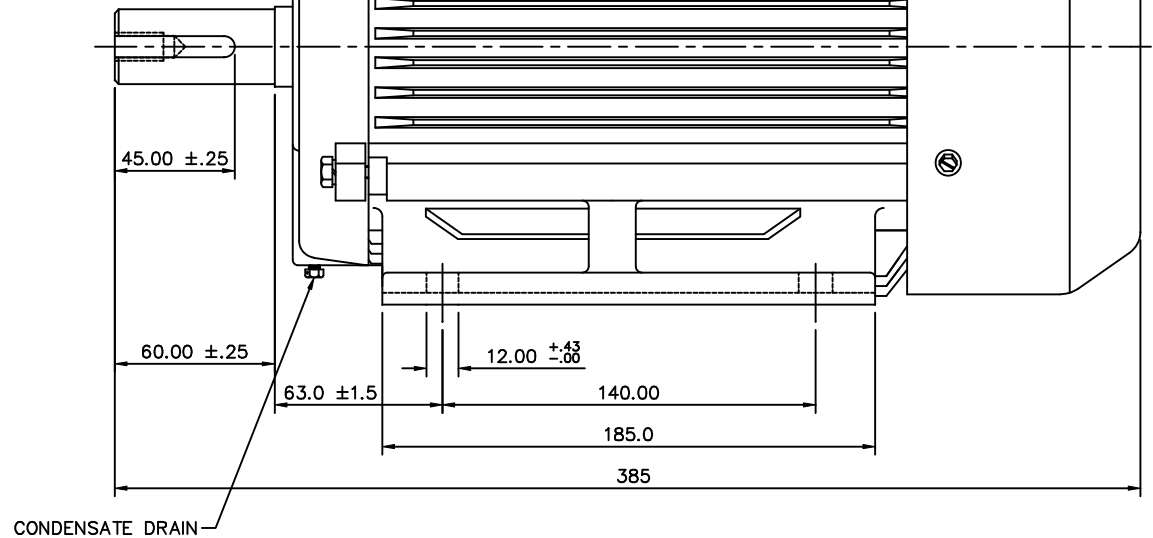
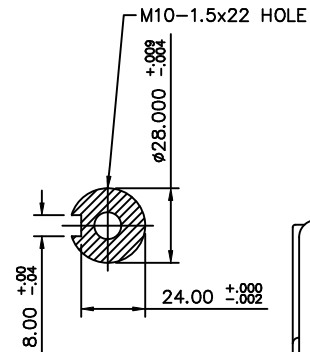
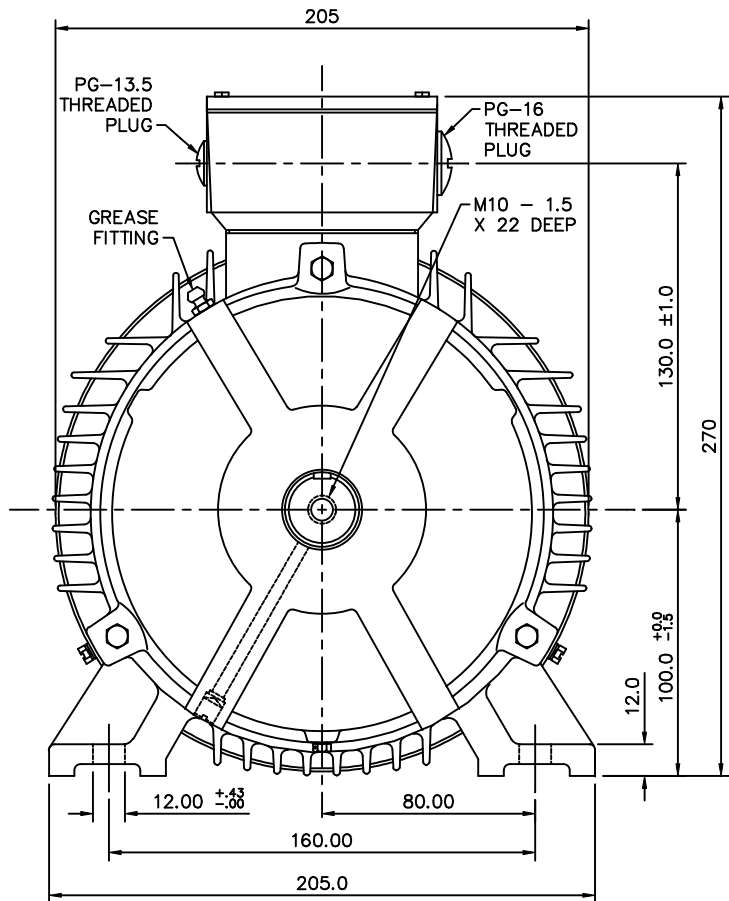
RegalRexnord

Nameplate Specifications

Phase	3	Output HP	4 & 4 Hp
Output KW	3.0 & 3.0 kW	Voltage	230/460 & 200/400 V
Speed	3495 & 2870 rpm	Service Factor	1.15 & 1.15
Frame	100L	Enclosure	Totally Enclosed Fan Cooled
Thermal Protection	No Protection	Efficiency	87.5 %
Ambient Temperature	40 °C	Frequency	60 & 50 Hz
Current	10./5.0 & 11.3/5.65 A	Power Factor	88.3
Duty	Continuous	Insulation Class	F
Design Code	B	KVA Code	J
Drive End Bearing Size	6206	Opp Drive End Bearing Size	6206
UL	No	CSA	Y
CE	Y	IP Code	43
Number of Speeds	1		

Technical Specifications

Electrical Type	Squirrel Cage Induction Run	Starting Method	Across The Line
Poles	2	Rotation	Reversible
Resistance Main	0 Ohms	Mounting	Rigid Base
Motor Orientation	Horizontal	Drive End Bearing	Ball
Opp Drive End Bearing	Ball	Frame Material	Cast Iron
Shaft Type	IEC	Overall Length	15.15 in
Shaft Diameter	1.111 in	Shaft Extension	2.36 in
Assembly/Box Mounting	F3		
Connection Drawing	005465ME	Outline Drawing	16989160ME



			TOLERANCES UNLESS SPECIFIED		MARATHON ELECTRIC	DRAWN	
			DEC.	METRIC		CHK	
			.X	±.25		APPD	
			.XX	±.76	TITLE	OUTLINE DF100 (F3)	SCALE 1=25.4
			.XXX	±.127		REF	
01	REDRAWN TO NEW STYLE	MGM 11/25/02	.XXXX	±.0127	MAT'L	FMF	
NO.	REVISION	BY & DATE	CHK	ANG	FINISH	PREV	
THIS DRAWING IN DESIGN AND DETAIL IS OUR PROPERTY AND MUST NOT BE USED EXCEPT IN CONNECTION WITH OUR WORK ALL RIGHTS OF DESIGN AND INVENTION ARE RESERVED THIS IS AN ELECTRONICALLY GENERATED DOCUMENT - DO NOT SCALE THIS PRINT			RFP	CAD FILE	16989160me	SIZE B	DRAWING NO. 169891-60
			DIST				REV. 01

ERROR: syntaxerror
OFFENDING COMMAND: --nostringval--

STACK:

/im
-savelevel-