

PRODUCT INFORMATION PACKET

Model No: 6107E

Catalog No: 6107E

Fan and Blower Motor, 3/4 HP, 1 Ph, 60 Hz, 115 V, 1075 RPM, 5 Speed, 48 Frame, OAO



Regal and are trademarks of Regal Rexnord Corporation or one of its affiliated companies.
©2022 Regal Rexnord Corporation, All Rights Reserved. MC017097E

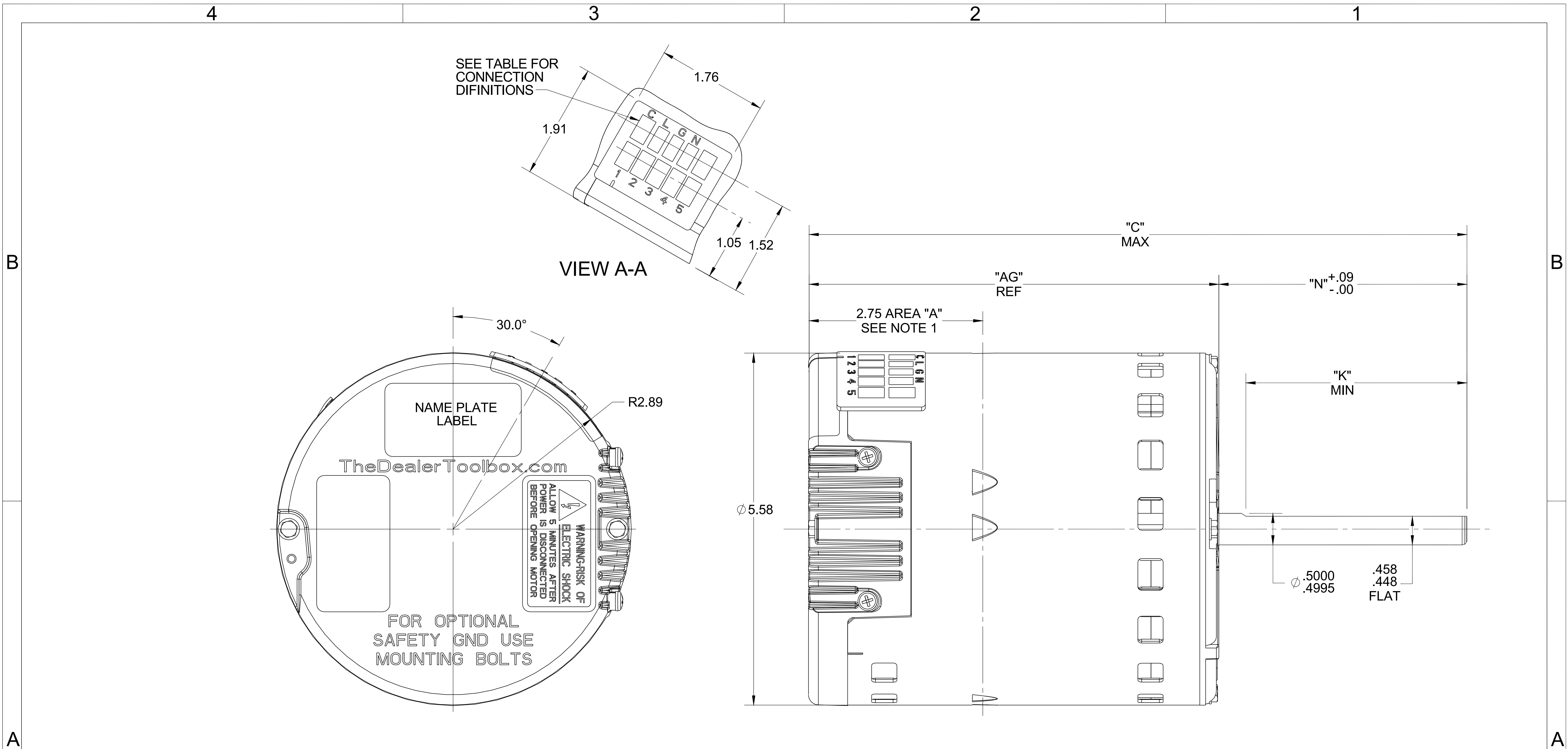
Nameplate Specifications

Output HP	3/4 Hp	Output KW	0.56 kW
Frequency	60 Hz	Voltage	115 V
Current	8.4 A	Speed	1075 rpm
Service Factor	1	Phase	1
Duty	Continuous Air Over	Insulation Class	B
Frame	48	Enclosure	Open Air Over
Thermal Protection	No Protection	Ambient Temperature	40 °C
UL	Recognized	CSA	N
CE	N	Number of Speeds	5

Technical Specifications

Electrical Type	Electronically Commutated Motor	Poles	12
Rotation	Reversible	Mounting	Round
Motor Orientation	Horizontal	Drive End Bearing	Ball
Opp Drive End Bearing	Ball	Frame Material	Rolled Steel
Shaft Type	Flat	Overall Length	11.45 in
Frame Length	5.57 in	Shaft Diameter	0.500 in
Shaft Extension	4.92 in		
Connection Drawing	N/R	Outline Drawing	5SME39NXL444


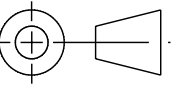
This is an uncontrolled document once printed or downloaded and is subject to change without notice. Date Created:08/24/2022



NAMEPLATE DATA	
MODEL	5SME39NXL444
CUSTOMER	CARRIER
CPN/STOCK NO.	6107E
H.P.	3/4
RPM	600-1200
VOLTS	115
HZ	60/50
AMPS	8.4
ROTATION	CCW/CW

DRAWING REVISION C	REVISION BY SVK	DATE 11/20/2015
ECO ECO-0085686	APPROVED BY MVN	DATE 11/20/2015
ECO DESCRIPTION RE-DRAWN IN SW & CHANGED LOGO TO ENDURA PRO		
COPYRIGHT REGAL BELOIT AMERICA, INC. ALL RIGHTS RESERVED. PROPRIETARY AND CONFIDENTIAL INFORMATION - THIS DOCUMENT IS THE PROPERTY OF REGAL BELOIT AMERICA, INC. ("OWNER") AND CONTAINS OWNER'S PROPRIETARY INFORMATION. ANY PERSON, CORPORATION OR OTHER FIRM RECEIVING IT IS DEEMED, BY RECEIVING IT, TO AGREE THAT IT, AND/OR ANY PART OF IT, SHALL NOT BE DISCLOSED TO ANY PERSON, CORPORATION OR OTHER ENTITY, DUPLICATED, AND/OR USED, EXCEPT AS EXPRESSLY APPROVED IN WRITING IN ADVANCE BY OWNER. THIS DOCUMENT SHALL BE RETURNED TO OWNER UPON REQUEST. IT MAY BE SUBJECT TO CERTAIN RESTRICTIONS UNDER APPLICABLE EXPORT CONTROL LAWS AND REGULATIONS.		

TOLERANCES UNLESS OTHERWISE SPECIFIED:			
DEC.	INCH	mm	ANGLE
.X	±0.1	[±2.5]	±0.5°
.XX	±0.03	[±0.76]	
.XXX	±0.005	[±0.127]	
.XXXX	±0.0005	[±0.0127]	
REMOVE BURRS & BREAK SHARP EDGES: .003/.015 [.076/.381] X 45° CORNER FILLETS: R.02 [.51]			
MACHINED SURFACES: 125 3.2 mm SHOWN IN [BRACKETS] INCH mm			

DRAWN BY SBD	 Regal Beloit America, Inc.		
DATE 03/14/13			
APPROVED BY SBD	DESCRIPTION OUTLINE Endura Pro		
DATE 03/14/13			
REFERENCE	MATERIAL		PROCESS/FINISH
THIRD ANGLE PROJECTION 	SIZE B	DRAWING NUMBER 5SME39NXL444	SHEET 1 OF 1

- NOTE:
- BELLY BAND MUST NOT BE PLACED WITHIN AREA "A"
 - APPROXIMATE WEIGHT IS 15.2 LB

11.45	4.92	4.50	6.50
C	N	K	AG