

PRODUCT INFORMATION PACKET

Model No: B2979

Catalog No: B2979

Pool Pump Motor, 2.0/.25 HP, 1 Ph, 60 Hz, 230 V, 3600 RPM, Y56J Frame, DP



Regal and are trademarks of Regal Rexnord Corporation or one of its affiliated companies.
©2022 Regal Rexnord Corporation, All Rights Reserved. MC017097E

Nameplate Specifications

Output HP	2.0/.25 Hp	Output KW	1.5 kW
Frequency	60 Hz	Voltage	230 V
Current	SF 10.0/2.1 A	Speed	3450/1725 rpm
Service Factor	1.2	Phase	1
Duty	Continuous	Insulation Class	F
Frame	Y56J	Enclosure	Drip Proof
Thermal Protection	Thermally Protected	Ambient Temperature	50 °C
UL	Recognized	CSA	Y
Number of Speeds	2-2-VT		

Technical Specifications

Electrical Type	Psc Low Speed, Cap Start/Cap Run High Speed	Poles	2/4
Rotation	Clockwise	Mounting	Round
Motor Orientation	Horizontal	Drive End Bearing	Ball
Opp Drive End Bearing	Ball	Frame Material	Rolled Steel
Shaft Type	7/16 Threaded	Overall Length	13.55 in
Frame Length	8.25 in	Shaft Diameter	0.625 in
Shaft Extension	2.604 in		
Connection Drawing	D0000026-001.PCX	Outline Drawing	B2979-S01

This is an uncontrolled document once printed or downloaded and is subject to change without notice. Date Created:08/24/2022

D

C

B

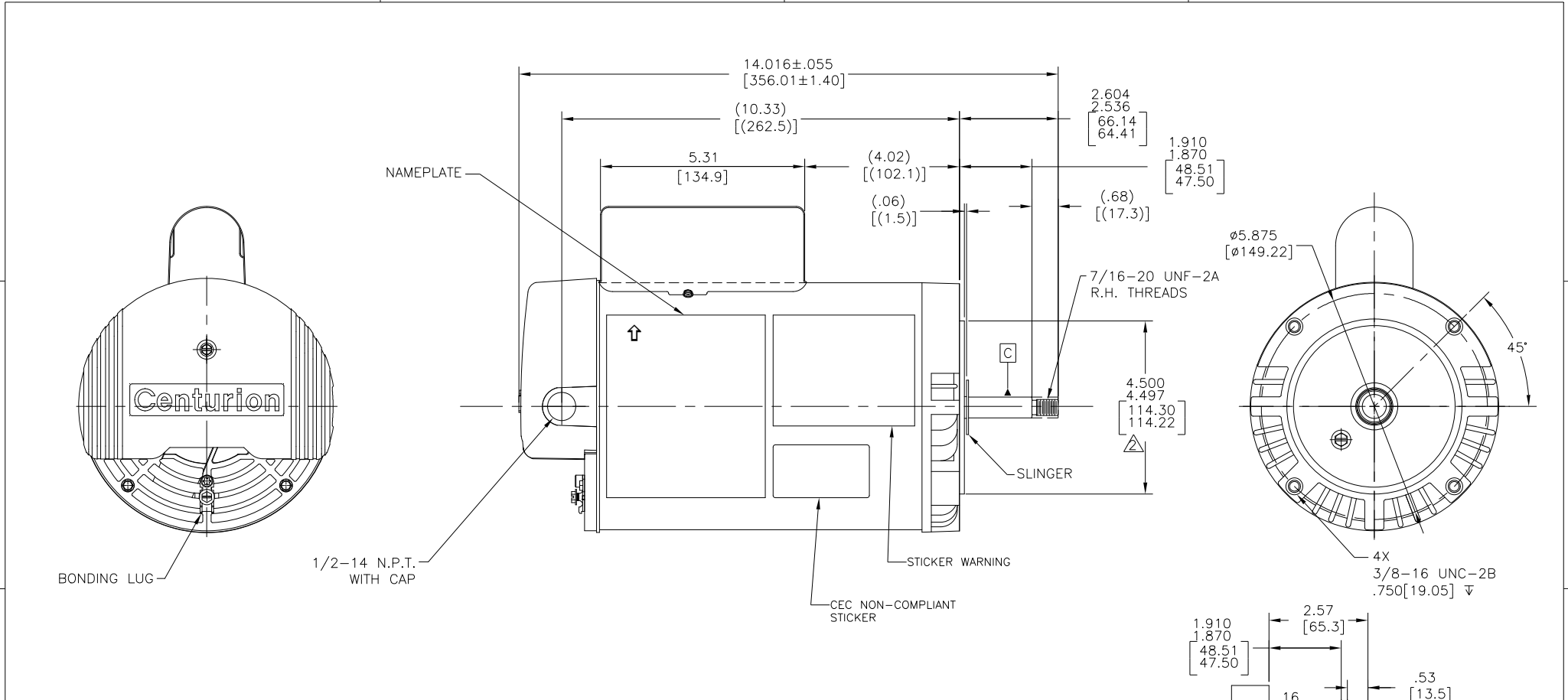
A

D

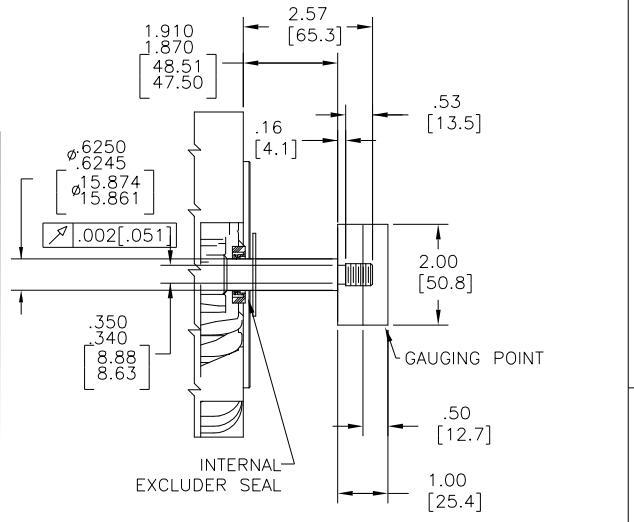
C

B

A



NAMEPLATE DATA	EXTERNAL CONNECTION DIAGRAM	NOTES
MODEL: K56AB47A01 CUST PN: B2979 HP: 2.0/.25 SF: 1.2 ROT: CW RPM: 3450/1725 TYPE: CXCP CODE: E FORM: KJM FRAME: Y56J VOLTS: 230 AMPS: SF 10.0/2.1 MAX AMPS: SF AMPS: PH: 1 HZ: 60 INS: F AMB: 50°C DUTY: CONT ENCLOSURE: DP THERMALLY PROTECTED	<p>USE COPPER CONDUCTORS ONLY. INSTALL MOTOR WITH VENTS DOWN. ACCEPTABLE FOR FIELD WIRING</p>	1. FOR THREADED SHAFT EXT. ECCENTRICITY OF THREADED PORTION OF SHAFT IS HELD WITHIN .004[.102] TOTAL GAGE READING WITH THE INDICATOR ON O.D. OF GROUND RING GAGE AS SHOWN. THE GAGE BEING STATIONARY WITH RESPECT TO THE ROTOR. 2. END PLAY NOT TO EXCEED .010[.254] MEASURED WITH NO THRUST. 3. ALL DIMENSIONS SHOWN IN PARENTHESIS ARE REFERENCE DIMENSIONS. 4. FINISH PAINT TO BE BLACK. 5. 2.40 SF HP 6. CTQ REQUIREMENT SEE EP000105-008 7. RoHS & REACH REQUIREMENT SEE EP000014.



PERFORMANCE CURVE	APPROVED SAMPLE
0116876	X5599
UL COMPONENT	CSA
FILE# CCN#	FILE# GUIDE#
E25022 XEWR2	LR43341 4211-01
CUSTOMER	DISTRIBUTION

CRITICAL TO QUALITY CHARACTERISTICS(CTQs) (P) PROCESS (E) ENGINEERING (A) APPLICATION (R) REGULATORY (L) LIFE	DRAWING REVISION J ECR-0220365 ZONE C2 ADD STICKER WARNING	REVISION BY HAIXIA.ZHANG APPROVED BY TRISTA.ZHAO	DATE 08-24-2022 DATE 08-24-2022	TOLERANCES UNLESS OTHERWISE SPECIFIED DEC. INCH mm ANGLE X ±.01 [±.3] ±0.5° XX ±.02 [±.5] XXX ±0.005 [±0.13] XXXX ±0.0005 [±0.013] REMOVE BURRS & BREAK SHARP EDGES .003/0.015 [0.08] CORNER FILLETS .02 [5] MACHINED SURFACES INCH mm mm SHOWN IN [BRACKETS]			DRAWN BY: MEO DATE: 5-11-2012 APPROVED BY: DATE: REFERENCE THIRD ANGLE PROJECTION	REGAL™ Regal Beloit America, Inc. DESCRIPTION MODEL-PFHP-56FR OUTLINE MATERIAL PROCESS/FINISH SIZE [DWG NO C B2979		SHEET 1
--	---	---	--	--	--	--	--	---	--	------------