

PRODUCT INFORMATION PACKET

Model No: 056T34D5327

Catalog No: G205

General Purpose Motor, 0.75 HP, 3 Ph, 60 Hz, 208-230/460 V, 3600 RPM, 56CC Frame, DP



Regal and are trademarks of Regal Rexnord Corporation or one of its affiliated companies.
©2022 Regal Rexnord Corporation, All Rights Reserved. MC017097E

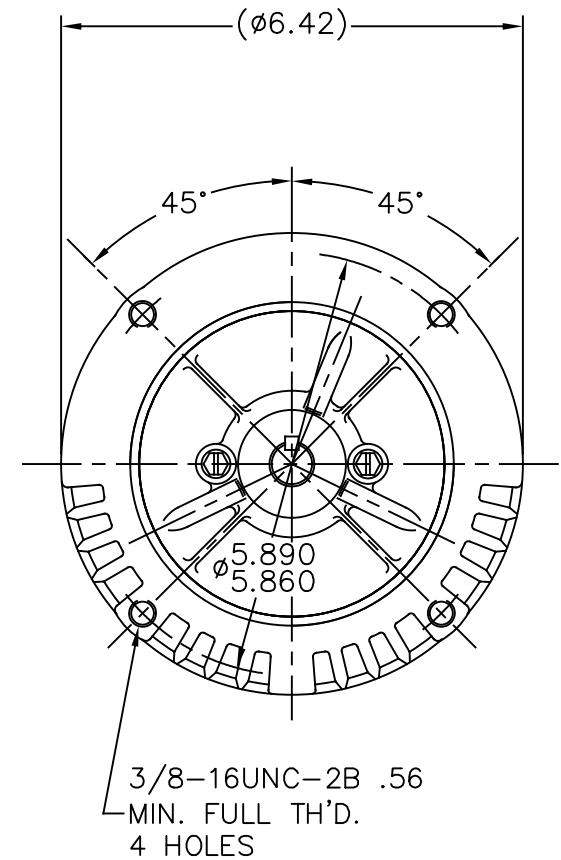
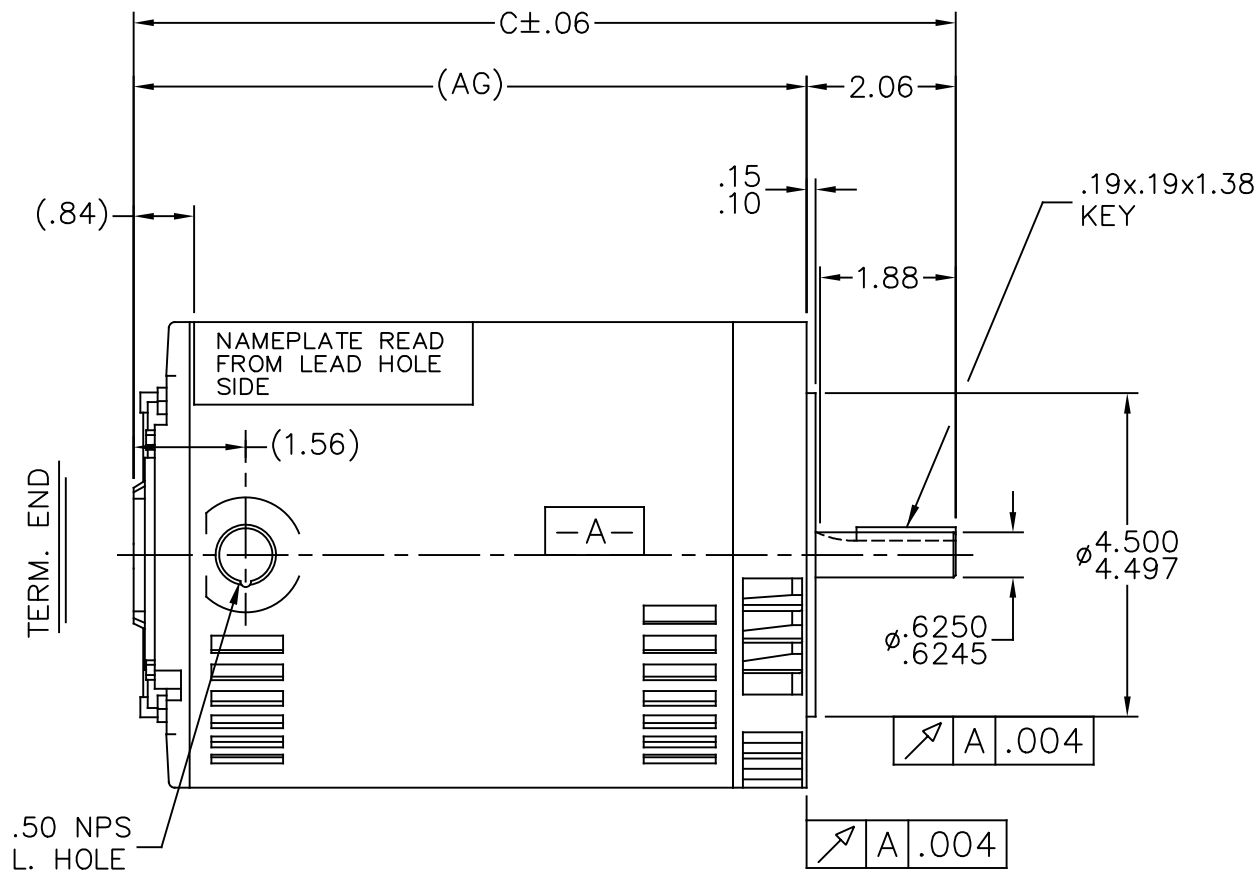
Nameplate Specifications

Output HP	0.75 Hp	Output KW	0.56 kW
Frequency	60 Hz	Voltage	208-230/460 V
Current	3.0-3.2/1.6 A	Speed	3450 rpm
Service Factor	1.25	Phase	3
Efficiency	74 %	Power Factor	69
Duty	Continuous	Insulation Class	B
Design Code	B	KVA Code	N
Frame	56CC	Enclosure	Drip Proof
Thermal Protection	No	Ambient Temperature	40 °C
Drive End Bearing Size	6203	Opp Drive End Bearing Size	6203
UL	Recognized	CSA	Y
CE	Y	IP Code	22
Number of Speeds	1		


Technical Specifications

Electrical Type	Squirrel Cage Induction Run	Starting Method	Across The Line
Poles	2	Rotation	Reversible
Resistance Main	5.66 Ohms	Mounting	Round
Motor Orientation	Horizontal	Drive End Bearing	Ball
Opp Drive End Bearing	Ball	Frame Material	Rolled Steel
Shaft Type	NEMA 56	Overall Length	10.44 in
Frame Length	6.56 in	Shaft Diameter	0.625 in
Shaft Extension	2.06 in	Assembly/Box Mounting	F1 Only
Outline Drawing	A-100096-656	Connection Drawing	A-EE7308

100096



DASH	FR.	C	AG		DASH	FR.	C	AG	
606	56-60	9.94	7.87		806	56-80	11.94	9.87	
656	"-65	10.44	8.37		856	56-85	12.44	10.37	
706	"-70	10.94	8.87		906	56-90	12.94	10.87	
756	"-75	11.44	9.37		956	56-90	13.44	11.37	

				TOLERANCES UNLESS SPECIFIED			DRAWN LZ 01-05-1994				
				DEC.	INCHES		CHK	ML 01-06-1994			
				.X	±.1		APPD	GK 01-06-1994			
6	UPDATED DRAWING	RJW 03-28-2007		.XX	±.03	TITLE OUTLINE 56 FR. – BB – DR. PR. – 'C' FACE – 3ø		SCALE	3=8		
5	REDRAWN IN AUTOCAD	TAT 06-29-2004	ML	.XXX	±.005			REF			
4	REDRAWN ON CADD	LZ 01-12-1994		.XXXX	±.0005	MAT'L.		FMF			
NO.	REVISION	BY & DATE	CHK	ANG	±7'30"	FINISH		PREV			
THIS DRAWING IN DESIGN AND DETAIL IS OUR PROPERTY AND MUST NOT BE USED EXCEPT IN CONNECTION WITH OUR WORK ALL RIGHTS OF DESIGN AND INVENTION ARE RESERVED THIS IS AN ELECTRONICALLY GENERATED DOCUMENT – DO NOT SCALE THIS PRINT			RFP		CAD FILE 100096			SIZE	DRAWING NO.	PAGE OF	REV.
			DIST WP					A	100096		6



NO.	REVISION	BY & DATE	CHK	ANG	TOLERANCES UNLESS SPECIFIED		DRAWN RM	11/20/1990
					DEC.	INCHES		
5	CHG TO REGAL LOGO	SL 09/10/2015	AB				CHK	ML 11/21/1990
4	REVISED IEC NOTATIONS	MSG 11/15/2011	CMN	.X	±.1		APPD	SAS 04/24/2003
3	ADDED IEC NOTATIONS... (U1), (V1) ETC. MU95194	MSG 5/10/2010	MJS	.XX	±.02		SCALE	1=1
2	ADDED THE OPTIONAL CORD CONNECTION MU46318	RDH 04/24/2003	DRS	.XXX	±.005		REF	
1	REDRAWN	RM 11/20/1990		.XXXX	±.0005		FMF	
					±7'30"		PREV	
THIS DRAWING IN DESIGN AND DETAIL IS OUR PROPERTY AND MUST NOT BE USED EXCEPT IN CONNECTION WITH OUR WORK ALL RIGHTS OF DESIGN AND INVENTION ARE RESERVED THIS IS AN ELECTRONICALLY GENERATED DOCUMENT - DO NOT SCALE THIS PRINT				RFP	CAD FILE ee7308		SIZE	DRAWING NO. PAGE OF REV.
				DIST WP			A	EE7308 5