

# PRODUCT INFORMATION PACKET

Model No: 056T34D5326

Catalog No: G241

General Purpose Motor, 0.50 HP, 3 Ph, 60 Hz, 208-230/460 V, 3600 RPM, 56C Frame, DP



Regal and are trademarks of Regal Rexnord Corporation or one of its affiliated companies.

©2022 Regal Rexnord Corporation, All Rights Reserved. MC017097E

### Nameplate Specifications

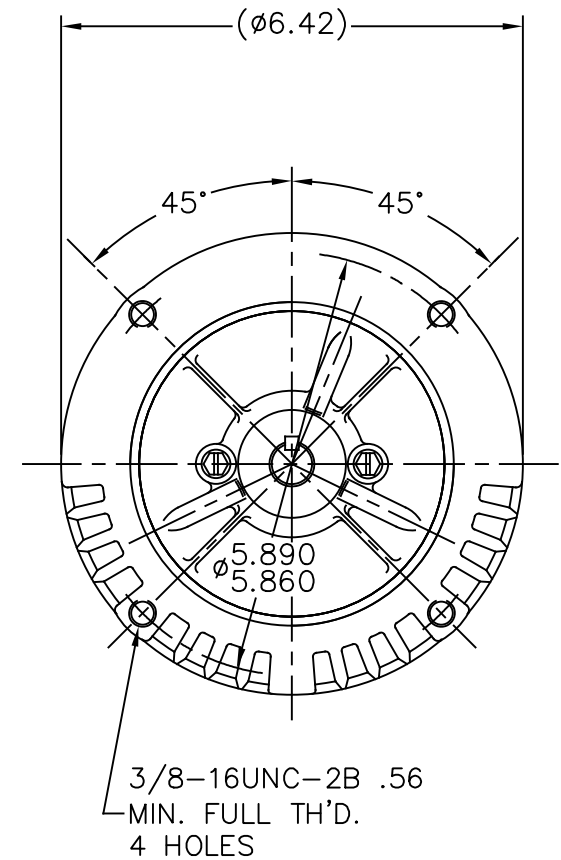
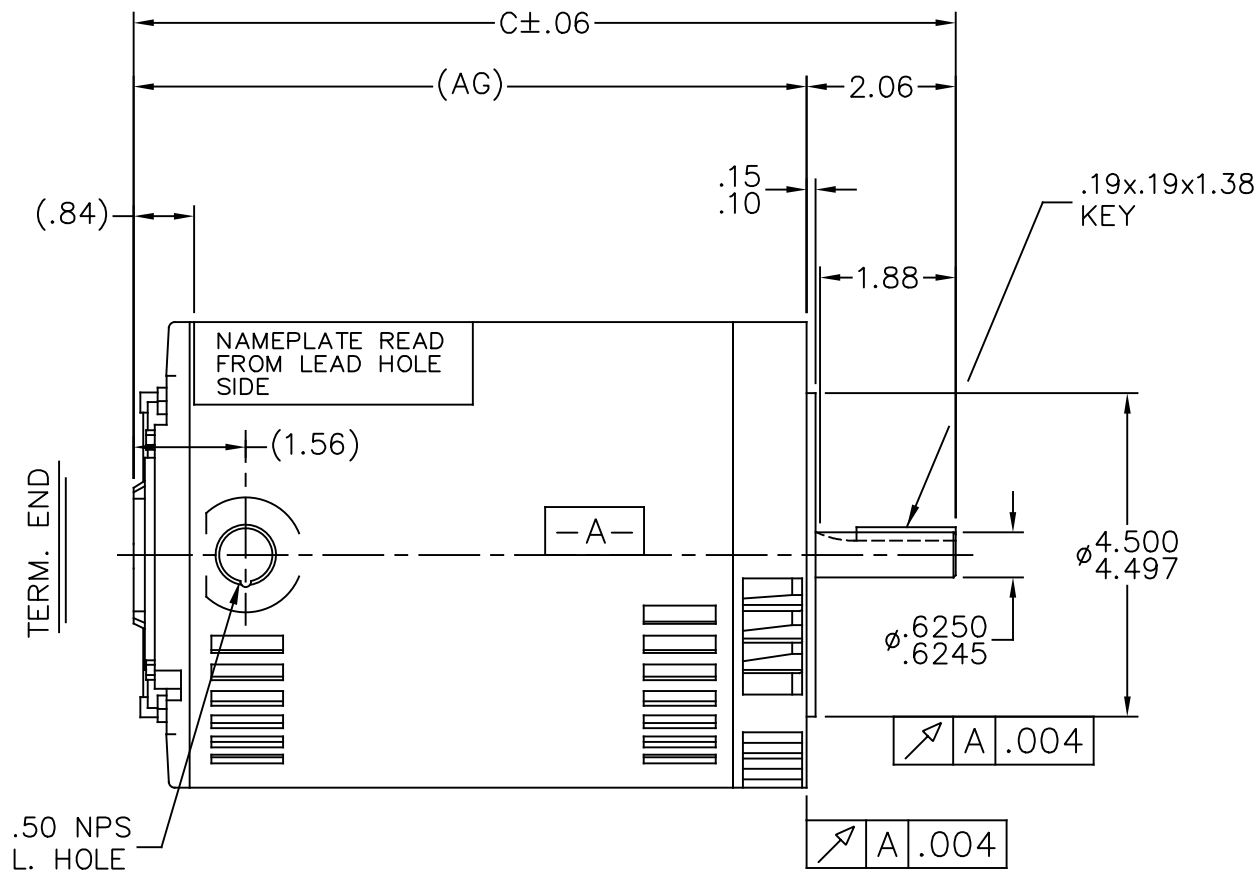
Output HP	0.50 Hp	Output KW	0.37 kW
Frequency	60 Hz	Voltage	208-230/460 V
Current	1.9-2.2/1.1 A	Speed	3450 rpm
Service Factor	1.25	Phase	3
Efficiency	66 %	Power Factor	69.7
Duty	Continuous	Insulation Class	B
Design Code	B	KVA Code	P
Frame	56C	Enclosure	Drip Proof
Thermal Protection	No Protection	Ambient Temperature	40 °C
Drive End Bearing Size	6203	Opp Drive End Bearing Size	6203
UL	Recognized	CSA	Y
CE	Y	IP Code	22
Number of Speeds	1		

### Technical Specifications


Electrical Type	Squirrel Cage Induction Run	Starting Method	Across The Line
Poles	2	Rotation	Reversible
Resistance Main	33.35 Ohms	Mounting	Round
Motor Orientation	Horizontal	Drive End Bearing	Ball
Opp Drive End Bearing	Ball	Frame Material	Rolled Steel
Shaft Type	NEMA 56	Shaft Diameter	23.000 in
Assembly/Box Mounting	F1 ONLY		
Connection Drawing	A-EE7308	Outline Drawing	A-100096-656

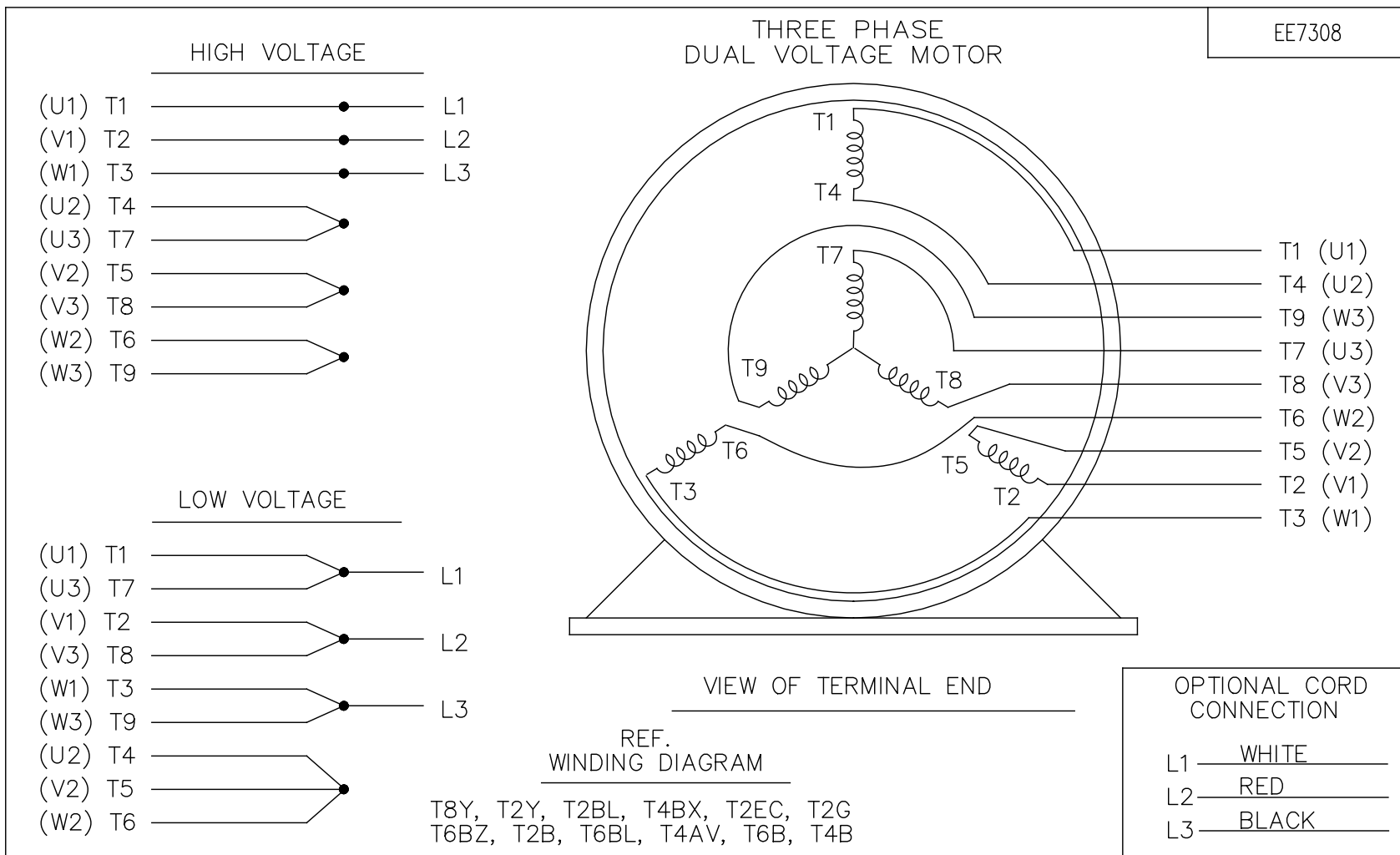
This is an uncontrolled document once printed or downloaded and is subject to change without notice. Date Created:09/08/2022


100096



DASH	FR.	C	AG		DASH	FR.	C	AG	
606	56-60	9.94	7.87		806	56-80	11.94	9.87	
656	"-65	10.44	8.37		856	56-85	12.44	10.37	
706	"-70	10.94	8.87		906	56-90	12.94	10.87	
756	"-75	11.44	9.37		956	56-90	13.44	11.37	

				TOLERANCES UNLESS SPECIFIED			DRAWN LZ 01-05-1994			
				DEC.	INCHES		CHK	ML	01-06-1994	
				.X	±.1		APPD	GK	01-06-1994	
6	UPDATED DRAWING	RJW 03-28-2007		.XX	±.03	TITLE OUTLINE			SCALE	3=8
5	REDRAWN IN AUTOCAD	TAT 06-29-2004	ML	.XXX	±.005	56 FR. – BB – DR. PR. – 'C' FACE – 3ø			REF	
4	REDRAWN ON CADD	LZ 01-12-1994		.XXXX	±.0005	MAT'L.			FMF	
NO.	REVISION	BY & DATE	CHK	ANG	±7'30"	FINISH			PREV	
THIS DRAWING IN DESIGN AND DETAIL IS OUR PROPERTY AND MUST NOT BE USED EXCEPT IN CONNECTION WITH OUR WORK ALL RIGHTS OF DESIGN AND INVENTION ARE RESERVED THIS IS AN ELECTRONICALLY GENERATED DOCUMENT – DO NOT SCALE THIS PRINT			RFP		CAD FILE 100096			SIZE	DRAWING NO. PAGE OF	REV.
			DIST WP					A	100096	6



				TOLERANCES UNLESS SPECIFIED		 <b>Regal Beloit America, Inc.</b>	DRAWN RM 11/20/1990				
5	CHG TO REGAL LOGO	SL 09/10/2015	AB	DEC.	INCHES		CHK ML 11/21/1990				
4	REVISED IEC NOTATIONS	MSG 11/15/2011	CMN	.X	±.1		APPD SAS 04/24/2003				
3	ADDED IEC NOTATIONS... (U1), (V1) ETC. MU95194	MSG 5/10/2010	MJS	.XX	±.02		SCALE 1=1				
2	ADDED THE OPTIONAL CORD CONNECTION MU46318	RDH 04/24/2003	DRS	.XXX	±.005	TITLE CONNECTION DIAGRAM 3Ø – DUAL VOLTAGE MOTOR	REF				
1	REDRAWN	RM 11/20/1990		.XXXX	±.0005		FMF				
NO.	REVISION	BY & DATE	CHK	ANG	±7°30"	FINISH	PREV				
THIS DRAWING IN DESIGN AND DETAIL IS OUR PROPERTY AND MUST NOT BE USED EXCEPT IN CONNECTION WITH OUR WORK ALL RIGHTS OF DESIGN AND INVENTION ARE RESERVED THIS IS AN ELECTRONICALLY GENERATED DOCUMENT – DO NOT SCALE THIS PRINT			RFP		CAD FILE ee7308		SIZE	DRAWING NO.	PAGE	OF	REV.
			DIST WP				A	EE7308			5

THIS DRAWING IN DESIGN AND DETAIL IS OUR PROPERTY AND MUST NOT BE USED EXCEPT  
IN CONNECTION WITH OUR WORK ALL RIGHTS OF DESIGN AND INVENTION ARE RESERVED  
THIS IS AN ELECTRONICALLY GENERATED DOCUMENT - DO NOT SCALE THIS PRINT

## CERTIFICATION DATA SHEET

Model#: 56T34D5326 D  
 CONN. DIAGRAM: A-EE7308  
 OUTLINE: A-100096-656

WINDING#: ZT206 NONE 3  
 ASSEMBLY: F1 ONLY

## TYPICAL MOTOR PERFORMANCE DATA

HP	KW	SYNC. RPM	F.L. RPM	FRAME	ENCLOSURE	KVA CODE	DESIGN
1/2&1/3	.37&0.25	3600	3450&2850	56C	DP	P	B

PH	Hz	VOLTS	FL AMPS	START TYPE	DUTY	INSL	S.F	AMB°C	ELEVATION
3	60/50	208- 230/460#190/ 380	1.9- 2.2/1.1&2/1	ACROSS THE LINE	CONTINUOU S	B3	1.25/1.25	40	3300

FULL LOAD EFF: 66&70	3/4 LOAD EFF: 64	1/2 LOAD EFF: 61.5	GTD. EFF	ELEC. TYPE	NO LOAD AMPS
FULL LOAD PF: 69.7&64	3/4 LOAD PF: 60	1/2 LOAD PF: 49	62	SQ CAGE IND RUN	1.4 / .7

F.L. TORQUE	LOCKED ROTOR AMPS	L.R. TORQUE	B.D. TORQUE	F.L. RISE°C
0.76 LB-FT	16 / 8	2.5 LB-FT 329	3.8 LB-FT 500	15

SOUND PRESSURE @ 3 FT.	SOUND POWER	ROTOR WK^2	MAX. WK^2	SAFE STALL TIME	STARTS /HOUR	APPROX. MOTOR WGT
68 dBA	78 dBA	0.022 LB-FT^2	1.5 LB-FT^2	10 SEC.	2	18 LBS.

## \*\*\* SUPPLEMENTAL INFORMATION \*\*\*

DE BRACKET TYPE	ODE BRACKET TYPE	MOUNT TYPE	ORIENTATION	SEVERE DUTY	HAZARDOUS LOCATION	DRIP COVER	SCREENS	PAINT
C-FACE	STANDARD	ROUND	HORIZONTAL	FALSE	NONE	PROVISIONS ONLY	NONE	GRAY (POWDER)

BEARINGS		GREASE	SHAFT TYPE	SPECIAL DE	SPECIAL ODE	SHAFT MATERIAL	FRAME MATERIAL
DE	OPE						
BALL	BALL	POLYREX EM	STANDARD 56	NONE	NONE	1144 STRESSPROOF (C-223)	ROLLED STEEL
6203	6203						

THERMO-PROTECTORS				THERMISTORS	CONTROL	SPACE /n HEATERS
THERMOSTATS	PROTECTORS	WDG RTDs	BRG RTDs			
NONE	NOT	NONE	NONE	NONE	FALSE	NONE VOLTS

If Inverter equals NONE, contact factory for further information

* N O T E S *	INVERTER TORQUE: NONE					
	INV. HP SPEED RANGE: NONE					
	ENCODER: NONE					
	NONE NONE					
	NONE NONE PPR					
	BRAKE: NONE NONE					
	NONE P/N NONE					
	NONE NONE					
		NONE FT-LB		NONE V		NONE Hz

DATE: 06/29/2017 07:29:54 AM  
 FORM 3531 REV.3 02/07/99

\*\* Subject to change without notice.

## Data Sheet

Date: 12/12/2018

Customer: \_\_\_\_\_

Attention: \_\_\_\_\_

Submitted by: FAREEDA DUDEKULA



56T34D5326

Submittal

Data @ 460 V

## Motor Load Data

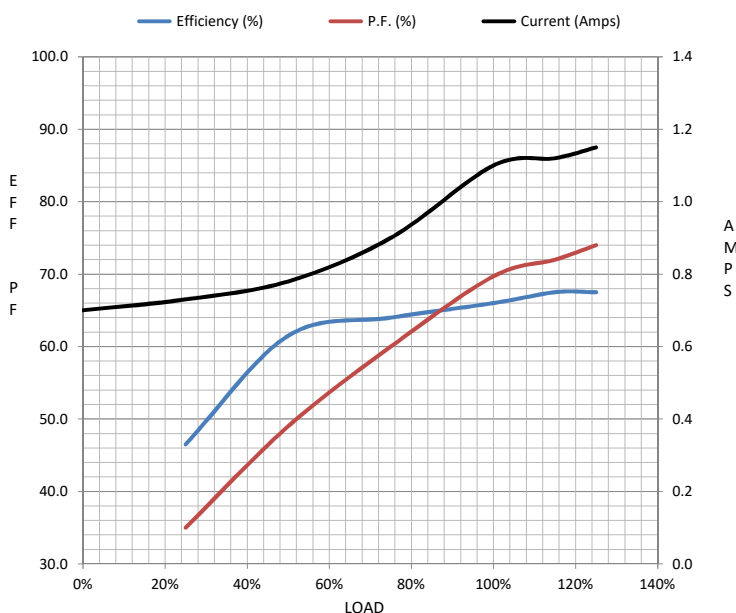
Load	0%	25%	50%	75%	100%	115%	125%	LR	
Current (Amps)	0.70	0.73	0.78	0.90	1.10	1.12	1.15	8.0	
Torque (ft-lb)	0.00	0.18	0.37	0.56	0.76	0.90	0.93	2.50	
RPM	3600	3580	3565	3525	3450	3,440	3425	0	
Efficiency (%)		46.5	61.5	64.0	66.0	67.5	67.5		
P.F. (%)	20.0	35.0	49.0	60.0	69.7	72.0	74.0	80.0	

## Motor Speed Data

	LR	Pull-Up	BD	Rated	Idle
Speed (RPM)	0	1500	2770	3450	3600
Current (Amps)	8.0	7.0	5.0	1.10	0.70
Torque (ft-lb)	2.50	4.7	3.8	0.76	0.00

## Information Block

HP	0.5			
Sync. RPM	3600			
Frame	56			
Enclosure	DP			
Construction	TS			
Voltage	208-230/460#190/380 V			
Frequency	60 Hz			
Design	B			
LR Code letter	P			
Service Factor	1.25			
Temp Rise @ FL	15 °C			
Duty	CONT			
Ambient	40 °C			
Elevation	1,000 feet			
Rotor/Shaft wk²	0.02 Lb-Ft²			
Ref Wdg	ZT206 NONE			
Sound Pressure @ 1M	68 dBA			
VFD Rating	NONE			
Outline Dwg	A-100096-656			
Conn. Diag	A-EE7308			
Additional Specifications:				
0				
0				
EQUIV CKT (OHMS / PHASE)				
R1	R2	X1	X2	Xm
0.0000	0.0000	0.0000	0.0000	0.0000



## Speed -Torque Curve

