

PRODUCT INFORMATION PACKET

Model No: 056T17G5323

Catalog No: G668

Explosion Proof Motor, 1 HP, 3 Ph, 60 Hz, 575 V, 1800 RPM, 56 Frame, EPFC



Regal and are trademarks of Regal Rexnord Corporation or one of its affiliated companies.
©2022 Regal Rexnord Corporation, All Rights Reserved. MC017097E

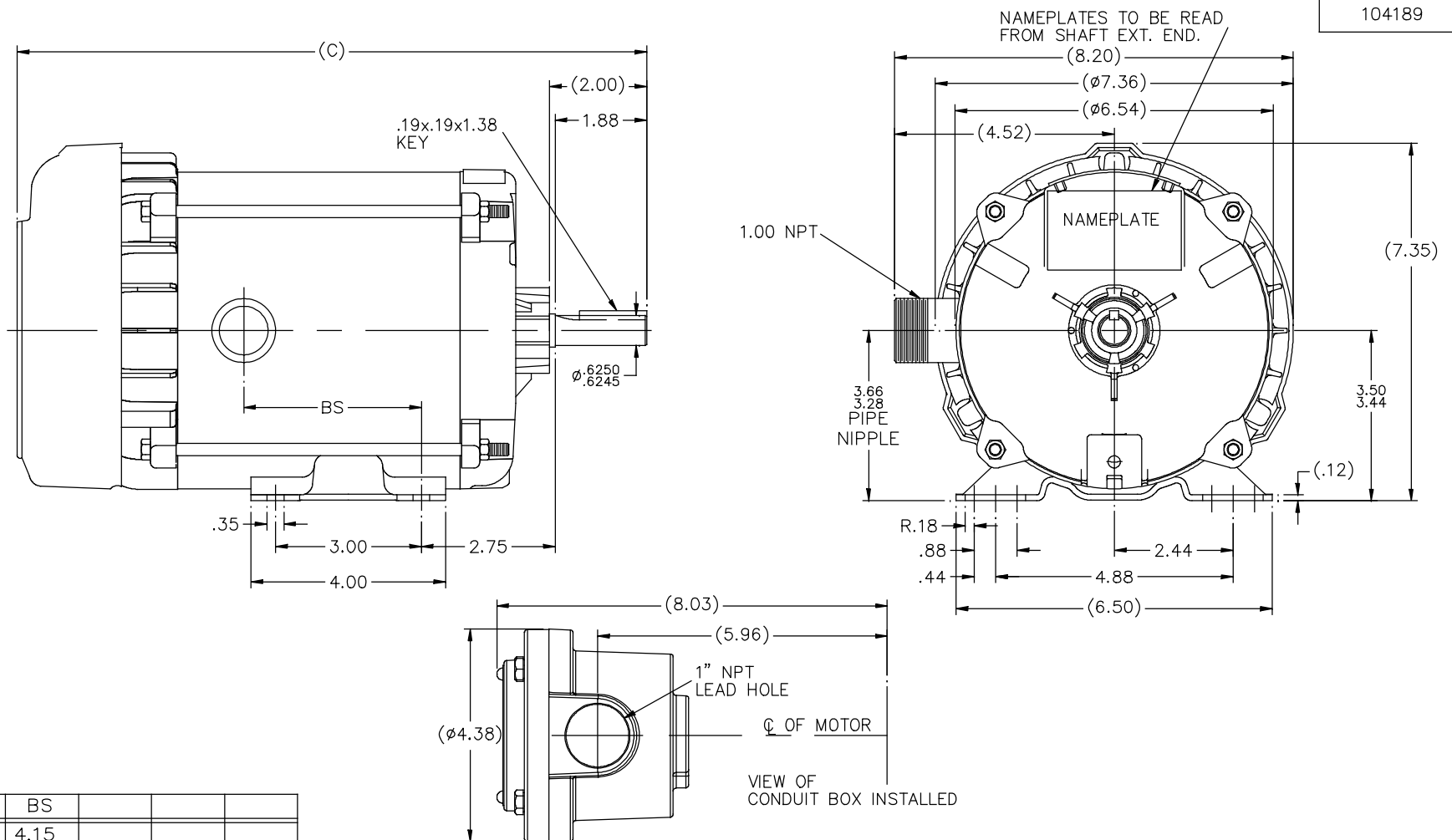
Nameplate Specifications

Output HP	1 Hp	Output KW	0.75 kW
Frequency	60 Hz	Voltage	575 V
Current	1.5 A	Speed	1725 rpm
Service Factor	1	Phase	3
Efficiency	77 %	Power Factor	68.4
Duty	Continuous	Insulation Class	B
Design Code	NO DESIGN CODE	KVA Code	L
Frame	56	Enclosure	Explosion Proof Fan cooled
Thermal Protection	Automatic	Ambient Temperature	40 °C
Drive End Bearing Size	6203	Opp Drive End Bearing Size	6203
UL	UL Listed And CSA Certified	CSA	Y
CE	N	IP Code	54
Hazardous Location	EXP PROOF CL I GR C&D CL II GR F&G T3B	Number of Speeds	1


Technical Specifications

Electrical Type	Squirrel Cage Induction Run	Starting Method	Across The Line
Poles	4	Rotation	Reversible
Resistance Main	17.9 Ohms	Mounting	Rigid Base
Motor Orientation	Horizontal	Drive End Bearing	Ball
Opp Drive End Bearing	Ball	Frame Material	Rolled Steel
Shaft Type	NEMA 56	Overall Length	13.94 in
Frame Length	6.81 in	Shaft Diameter	0.625 in
Shaft Extension	2 in	Assembly/Box Mounting	F1 ONLY
Outline Drawing	B-104189-681	Connection Drawing	A-EE7335B

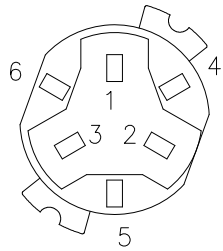
This is an uncontrolled document once printed or downloaded and is subject to change without notice. Date Created:09/12/2022



DASH	(C)	BS			
631	13.44	4.15			
681	13.94	4.65			
731	14.44	5.15			
781	14.94	5.65			
831	15.44	6.15			
881	15.94	6.65			
931	16.44	7.15			
981	16.94	7.65			

						TOLERANCES UNLESS SPECIFIED		 Regal Beloit America, Inc.		DRAWN MH 11-20-1996	
						DEC.	INCHES			CHK	ML 12-02-1996
4	COND. BOX INSTALLED VIEW UPDATED PER ECR-0044571	UD 10/15/13	ST	X	±.1	TITLE OUTLINE 56 FR. — EXP. PR. — TEFC — 1ø & 3ø				APPD	GK 12-02-1996
3	REVISED C'BOX PER CN40784A	JJB 02/23/2007	ML	.XX	±.03					SCALE 1=2	
2	ADDED CONDUIT BOX VIEW CN 26686	MRB 03-22-1998		.XXX	±.005					REF	
1	NEW DRAWING CN 23099	MH 12-02-1996		.XXXX	±.0005					FMF	
NO.	REVISION		BY & DATE	CHK	ANG	±.730"	FINISH			PREV	
THIS DRAWING IN DESIGN AND DETAIL IS OUR PROPERTY AND MUST NOT BE USED EXCEPT IN CONNECTION WITH OUR WORK. ALL RIGHTS OF DESIGN AND INVENTION ARE RESERVED. THIS IS AN ELECTRONICALLY GENERATED DOCUMENT — DO NOT SCALE THIS PRINT							RFP	CAD FILE 104189	SIZE B	DRAWING NO. 104189	PAGE 4 OF 4
							DIST WP				REV. 4

SINGLE VOLTAGE – THREE PHASE WITH OVERLOAD PROTECTOR



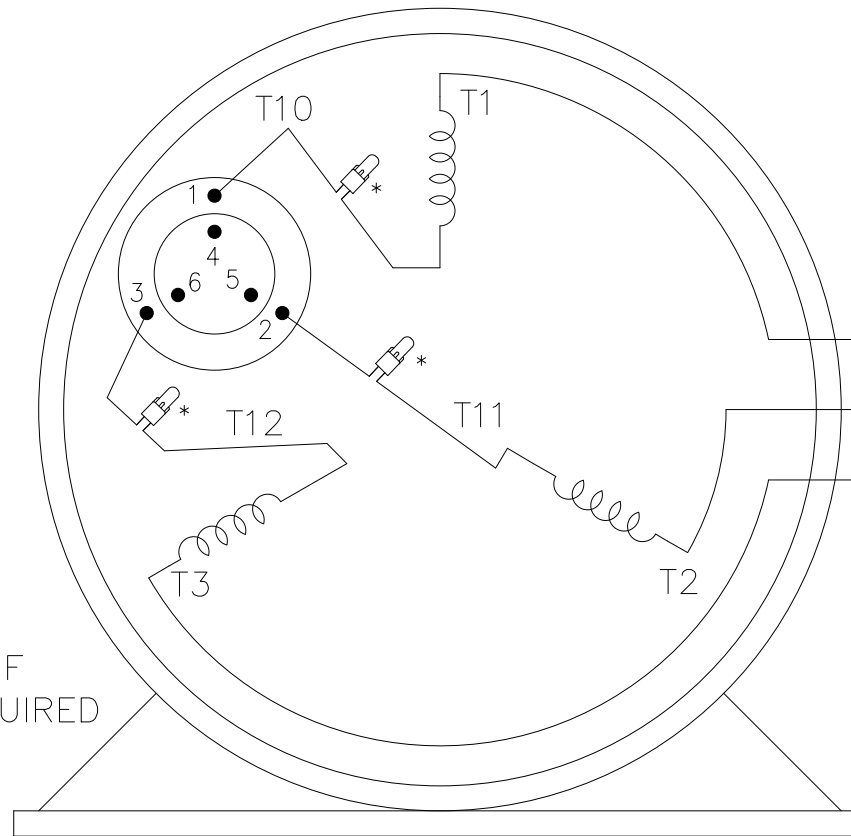
NOTE:
ACTUAL PROTECTORS
TERMINAL LOCATIONS
FOR LEAD CONNECTIONS

NOTE: TERMINAL BOARD
CONNECTIONS

LEADS WITH TERMINALS
SHOULD BE CONNECTED
TO INBOARD SIDE OF
TERMINAL BOARD.

T1 --- L1 — 4A }
T2 --- L2 — 5A }
T3 --- L3 — 6A }

IF
REQUIRED



T1 — 4A }
T2 — 5A } IF
T3 — 6A } REQUIRED

—TO REVERSE ROTATION—
INTERCHANGE ANY TWO
LINE LEAD CONNECTIONS


VIEW OF TERMINAL END

OPTIONAL CORD
CONNECTION

L1 — WHITE
L2 — RED
L3 — BLACK

		T6CK
T6CA		T6BM
T4CC		T4AY
T4C		T2DL
T6D		T2H

*USE PRESSURE CONNECTORS FOR MT2 PLANT ONLY

NO.	REVISION	BY & DATE	CHK	TOLERANCES UNLESS SPECIFIED		FINISH	TITLE	DRAWN KL 08-25-1993
				DEC.	INCHES			
12	UPDATED PER ECR-0211312	SG 07/27/2021	BD	.X	± -		 Regal Beloit America, Inc. CONNECTION DIAGRAM SINGLE VOLT – 3Ø WITH OVERLOAD PROT. MAT'L. FINISH	CHK RD 11-12-2014
11	ADDED THE OPTIONAL CORD CONNECTION	JAH 11-12-2014	RD	.XX	± -			APPD RD 11-12-2014
10	PRESSURE CONNECTORS ADDED (QTY 3)	PVR 07-09-2014	GR	.XXX	± -			SCALE 1=1
9	ADDED 4A, 5A, & 6A "IF REQUIRED" MU44987	MSG 01-07-2002	SAS	.XXXX	± -			REF
								FMF
								PREV
THIS DRAWING IN DESIGN AND DETAIL IS OUR PROPERTY AND MUST NOT BE USED EXCEPT IN CONNECTION WITH OUR WORK ALL RIGHTS OF DESIGN AND INVENTION ARE RESERVED THIS IS AN ELECTRONICALLY GENERATED DOCUMENT – DO NOT SCALE THIS PRINT							CAD FILE EE7335B DIST LB-WP	SIZE A DRAWING NO. EE7335B PAGE OF REV. 12