

PRODUCT INFORMATION PACKET

Model No: 056T17D2094

Catalog No: G063

General Purpose Motor, 0.50 HP, 3 Ph, 60 Hz, 208-230/460 V, 1800 RPM, 566 Frame, DP



Regal and are trademarks of Regal Rexnord Corporation or one of its affiliated companies.
©2022 Regal Rexnord Corporation, All Rights Reserved. MC017097E

Nameplate Specifications

Output HP	0.50 Hp	Output KW	0.37 kW
Frequency	60 Hz	Voltage	208-230/460 V
Current	2.1-2.2/1.1 A	Speed	1725 rpm
Service Factor	1.25	Phase	3
Efficiency	72 %	Power Factor	59
Duty	Continuous	Insulation Class	B
Design Code	B	KVA Code	K
Frame	566	Enclosure	Drip Proof
Thermal Protection	No	Ambient Temperature	40 °C
UL	Recognized	CSA	Y
CE	N	IP Code	22
Number of Speeds	1		

Technical Specifications

Electrical Type	Squirrel Cage Induction Run	Starting Method	Across The Line
Poles	4	Rotation	Reversible
Resistance Main	41 Ohms	Mounting	Rigid Base
Motor Orientation	Horizontal	Drive End Bearing	Ball
Opp Drive End Bearing	Ball	Frame Material	Rolled Steel
Shaft Type	T	Overall Length	10.32 in
Shaft Diameter	0.625 in	Shaft Extension	1.88 in
Assembly/Box Mounting	F1 ONLY		
Connection Drawing	113A930FIG2	Outline Drawing	52A111265P1

This is an uncontrolled document once printed or downloaded and is subject to change without notice. Date Created:09/08/2022



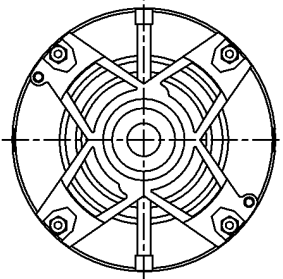
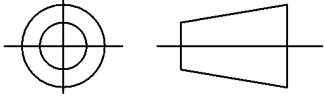
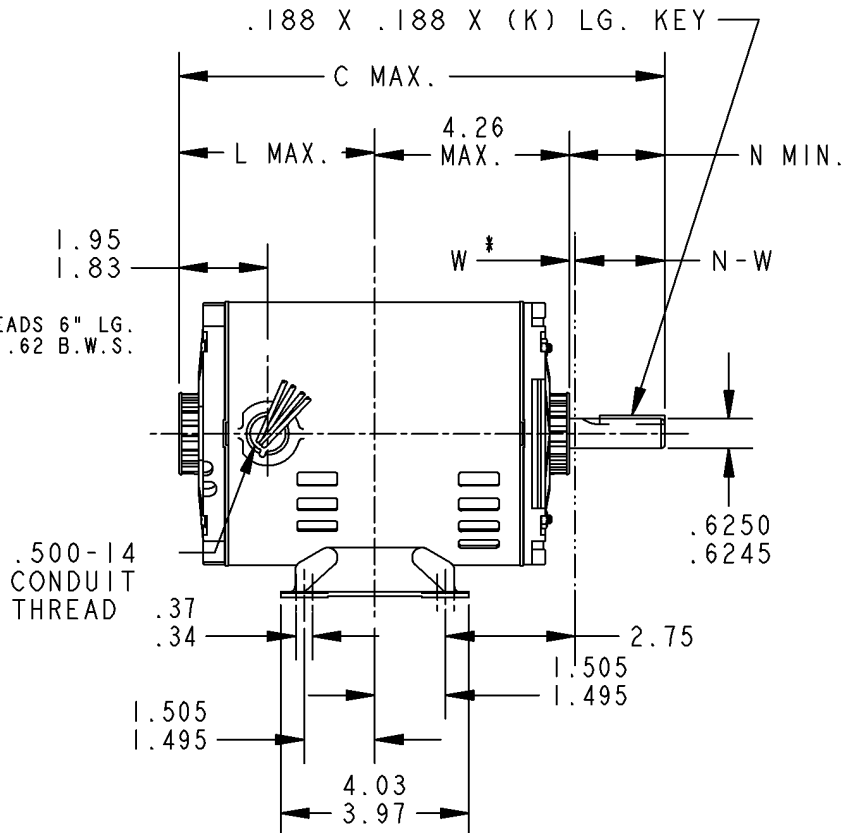
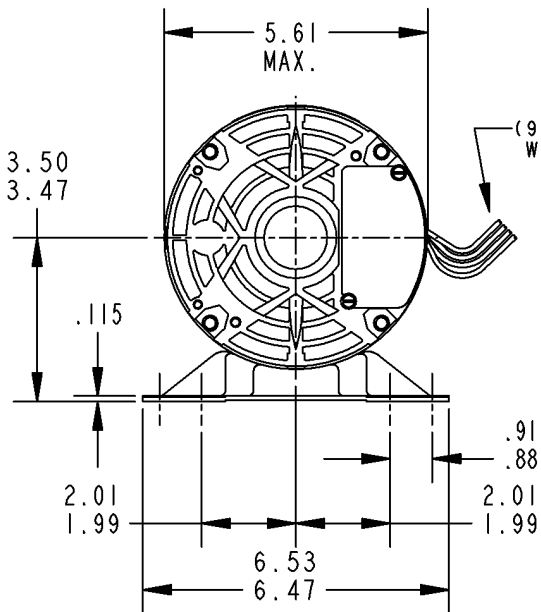
RBC PROPRIETARY AND CONFIDENTIAL INFORMATION

This document is the property of REGAL BELOIT CORPORATION ("RBC") including its subsidiaries and divisions and contains proprietary information of RBC. This document is loaned on the express condition that neither it nor the information contained therein shall be disclosed to others without the express written consent of RBC, and that the information shall be used by the recipient only as approved expressly by RBC. This document shall be returned to RBC upon its request. This document may be subject to certain restrictions under U.S. export control laws and regulations.

REVISIONS

REV.	DESCRIPTION	DATE	APPROVED
1	UPDATED AS PER IS05-1826	09/06/05	PRAVEEN.K

THIRD ANGLE PROJECTION

VIEW SHOWING P.E.
VENTILATION OPENINGS

I	K	36	56	10.32	1.38	4.23	1.88	2.01/1.79
P	TYPE	GE SIZE	NEMA FR	C	K	L	N	N - W

W* IS A CLEARNCE
DUE TO VARIATION
IN PARTS AND
ASSEMBLY.

FOR ADDITIONAL INFO REFER TO:	SIGNATURES	DATE
APPLIED PRACTICES	MODEL	.
DIMENSIONS ARE IN INCHES	DETAIL	ARUNK 11/23/04
TOLERANCE ON:	CHECKED	.
1 PL DECIMALS ± 0.1	ENGRG	.
2 PL DECIMALS ± 0.02	MFG	.
3 PL DECIMALS ± 0.005	QUALITY	.
ANGLES ± 1.0	ISSUED	ARUNK 11/23/04
FRACTIONS \pm		
FINISH		
MATERIAL	SOLID MODEL: 52A111265	



REGAL-BELOIT CORPORATION

TITLE

OUTLINE

FORM N - GENERAL PURPOSE MOTOR
DRIP PROOF - WELDED BASE - BALL BEARING

SIZE DRAWING

A

52A111265

REV

1

SCALE: 0.003

REF. No: .

SHEET 1 of 1



113A930FIG2 2

REV 2

SIZE A

DRAWING NO.

RBC PROPRIETARY AND CONFIDENTIAL INFORMATION

This document is the property of REGAL BELOIT CORPORATION ("RBC") including its subsidiaries and divisions and contains proprietary information of RBC. This document is loaned on the express condition that neither it nor the information contained therein shall be disclosed to others without the express written consent of RBC, and that the information shall be used by the recipient only as approved expressly by RBC. This document shall be returned to RBC upon its request. This document may be subject to certain restrictions under U.S. export control laws and regulations.

THIRD ANGLE PROJECTION

REVISIONS

REV.	DESCRIPTION	DATE	APPROVED
1	CHG TO RBC FORMAT PER ISO5-1777	06/15/06	MADHU
2	RENAMED 113A930_FIG_2 TO 113A930FIG2 PER ISO7-0972	05/08/07	MADHU

FIG. 2

3 PHASE

	VOLTS	L1	L2	L3	TOGETHER
2Y	LOW	1 - 7	2 - 8	3 - 9	4 - 5 - 6
1Y	HIGH	1	2	3	4 - 7, 5 - 8, 6 - 9

BRAKE MOTORS: CONNECT BRAKE LEADS
B1 & B2 TO MOTOR
LEADS T7 & T8.

FOR ADDITIONAL INFO REFER TO:

APPLIED PRACTICES

DIMENSIONS ARE IN INCHES

TOLERANCE ON:
1 PL DECIMALS ± 0.1
2 PL DECIMALS ± 0.02
3 PL DECIMALS ± 0.005
ANGLES ± 1.0
FRACTIONS ±
FINISH

MATERIAL

SIGNATURES

DATE

M.D. PAPE 02/25/03

DETAIL

CHECKED

ENGRG

MFG

QUALITY

ISSUED M.D. PAPE 02/25/03

SOLID MODEL: 113A930FIG2

REGAL-BELOIT CORPORATION

TITLE

CONNECTION DIAGRAM

SIZE A

DRAWING

113A930FIG2

REV 2

SCALE: 1.000

REF. No:

SHEET 1 of 1

4 of 4