

# PRODUCT INFORMATION PACKET

Model No: 9706  
Catalog No: 9706  
krishna short description



Regal and are trademarks of Regal Rexnord Corporation or one of its affiliated companies.  
©2022 Regal Rexnord Corporation, All Rights Reserved. MC017097E

### Nameplate Specifications

Output HP	1/8 Hp	Output KW	0.10 kW
Frequency	60 Hz	Voltage	115 V
Current	5.2 A	Speed	1050 rpm
Service Factor	1	Phase	1
Duty	Air Over	Insulation Class	B
Frame	42Y	Enclosure	Open Air Over
Thermal Protection	Automatic	Ambient Temperature	40 °C
UL	Recognized	CSA	Y
CE	N	Number of Speeds	1

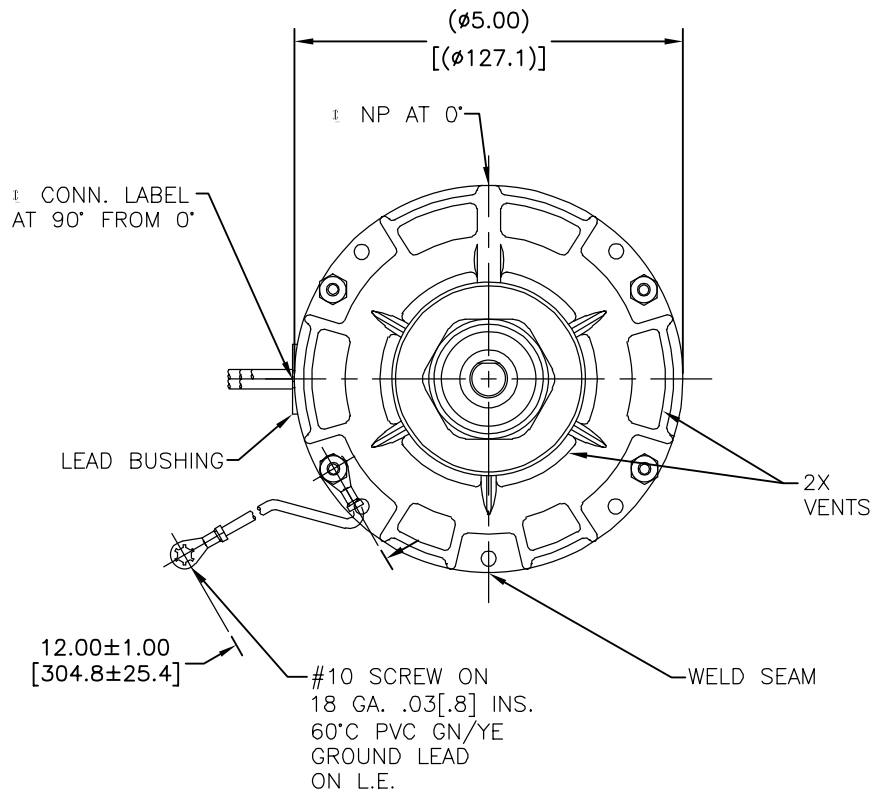
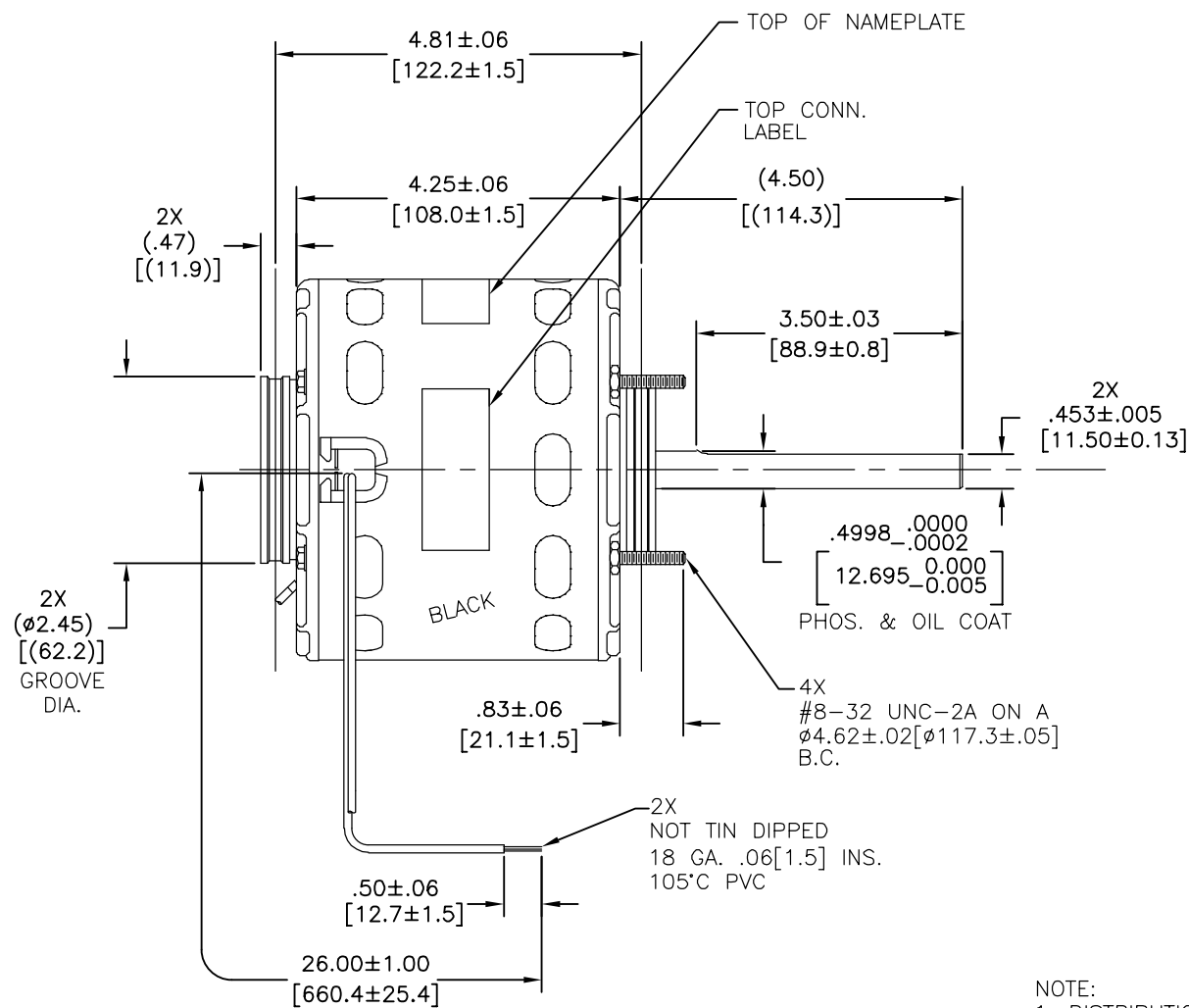
### Technical Specifications

Electrical Type	Shaded Pole	Starting Method	Across The Line
Poles	6	Rotation	Counterclockwise Lead End
Mounting	Resilient Rings	Motor Orientation	Horizontal
Drive End Bearing	Sleeve	Opp Drive End Bearing	Sleeve
Frame Material	Rolled Steel	Shaft Type	Flat
Overall Length	8.75 in	Frame Length	3.67 in
Shaft Diameter	0.500 in	Shaft Extension	4.5 in
Outline Drawing	DA3G7208-S01		

This is an uncontrolled document once printed or downloaded and is subject to change without notice. Date Created:08/24/2022

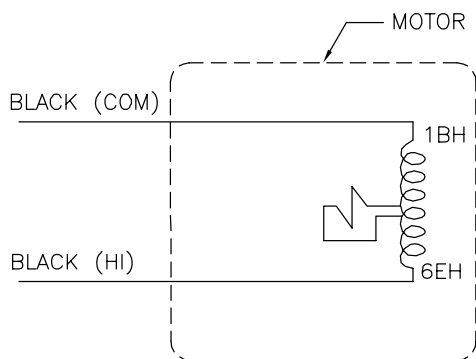
CUSTOMER IS SOLELY RESPONSIBLE FOR MOTOR PERFORMANCE AND SUITABILITY IN APPLICATIONS FOR CUSTOMER'S USES.

END PLAY .005[.13] MIN - .040[1.02] MAX  
MAX. SHAFT RUN OUT .001[.03] PER INCH  
MAX. RUN OUT NOT TO EXCEED .010[.25]



NOTE:  
1. DISTRIBUTION PART NUMBER: 9706  
GRAINGER PART NUMBER: 4VU34

ELECTRICALLY PER  
SAMPLE 0444107B  
CURVE #32429



ROT.:— CCWLE

NAMEPLATE DATA:



Tipp City, OH  
THERMALLY PROTECTED



SER. DATE & PO# PLT LTR MOD DA3G7208N" □□□□  
VOLTS 115 HZ 60 AMPS 5.2  
RPM 1050 SP 1 PH 1 CAP  
INS CLB AMB 40°C HP 1/8 CONT. A.O. ← ROTATION →  
BRG SLV ASSEMBLED IN MEXICO

CONNECTION LABEL

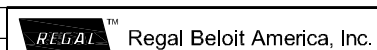
2519596-001

DRAWING REVISION E	REVISION BY R.ZHOU	DATE 01-28-2015
ECO-0070367	APPROVED BY C.ZHANG	DATE 01-28-2015
ECO DESCRIPTION SEE ECO		

COPYRIGHT REGAL BELOIT AMERICA, INC. ALL RIGHTS RESERVED.  
PROPRIETARY AND CONFIDENTIAL INFORMATION - THIS DOCUMENT IS THE PROPERTY OF  
REGAL BELOIT AMERICA, INC. (OWNER) AND CONTAINS OWNER'S PROPRIETARY  
INFORMATION. ANY PERSON, CORPORATION OR OTHER FIRM RECEIVING IT IS DEEMED,  
BY RECEIVING IT, TO AGREE THAT IT, AND/OR ANY PART OF IT, SHALL NOT BE DISCLOSED  
TO ANY PERSON, CORPORATION OR OTHER ENTITY, DUPLICATED, AND/OR USED, EXCEPT  
AS EXPRESSLY APPROVED IN WRITING IN ADVANCE BY OWNER. THIS DOCUMENT SHALL  
BE RETURNED TO OWNER UPON REQUEST. IT MAY BE SUBJECT TO CERTAIN  
RESTRICTIONS UNDER APPLICABLE EXPORT CONTROL LAWS AND REGULATIONS.

TOLERANCES UNLESS OTHERWISE SPECIFIED	DEC.	INCH	mm	ANGLE
X	±0.1	[±2.5]	±0.5°	
.XX	±0.02	[±0.51]		
.XXX	±0.005	[±0.127]		
.XXXX	±0.0005	[±0.0127]		
REMOVE BURRS & BREAK SHARP EDGES .003/.015 [1.076/.381] CORNER FILLETS .02 [1.51] MACHINED SURFACES $\frac{125}{\text{INCH}} \sqrt{\text{mm}} \checkmark$ mm SHOWN IN [BRACKETS]				

DRAWN BY:	DATE:
APPROVED BY:	DATE:
REFERENCE	THIRD ANGLE PROJECTION



Regal Beloit America, Inc.

DESCRIPTION  
MODEL-RFHP-42FR  
OUTLINE

MATERIAL  
PROCESS/FINISH

SIZE DWG NO  
DA3G7208

SHEET  
1