

PRODUCT INFORMATION PACKET

Model No: 669

Catalog No: 669

Fan Coil & Air Conditioner Motor, 1/10, 1/15, 1/25, 1/35 HP, 1 Ph, 60 Hz, 115 V, 1075 RPM, 4 Speed,
42 Frame, OAO



Regal and are trademarks of Regal Rexnord Corporation or one of its affiliated companies.
©2022 Regal Rexnord Corporation, All Rights Reserved. MC017097E

Nameplate Specifications

Output HP	1/10, 1/15, 1/25, 1/35 Hp	Output KW	0.07 kW
Frequency	60 Hz	Voltage	115 V
Current	1.7 A	Speed	1075 rpm
Service Factor	1	Phase	1
Duty	Continuous Air Over	Insulation Class	A
Frame	42None	Enclosure	Open Air Over
Thermal Protection	Automatic	Ambient Temperature	40 °C
UL	Recognized	CSA	Y
CE	N	Number of Speeds	4

Technical Specifications

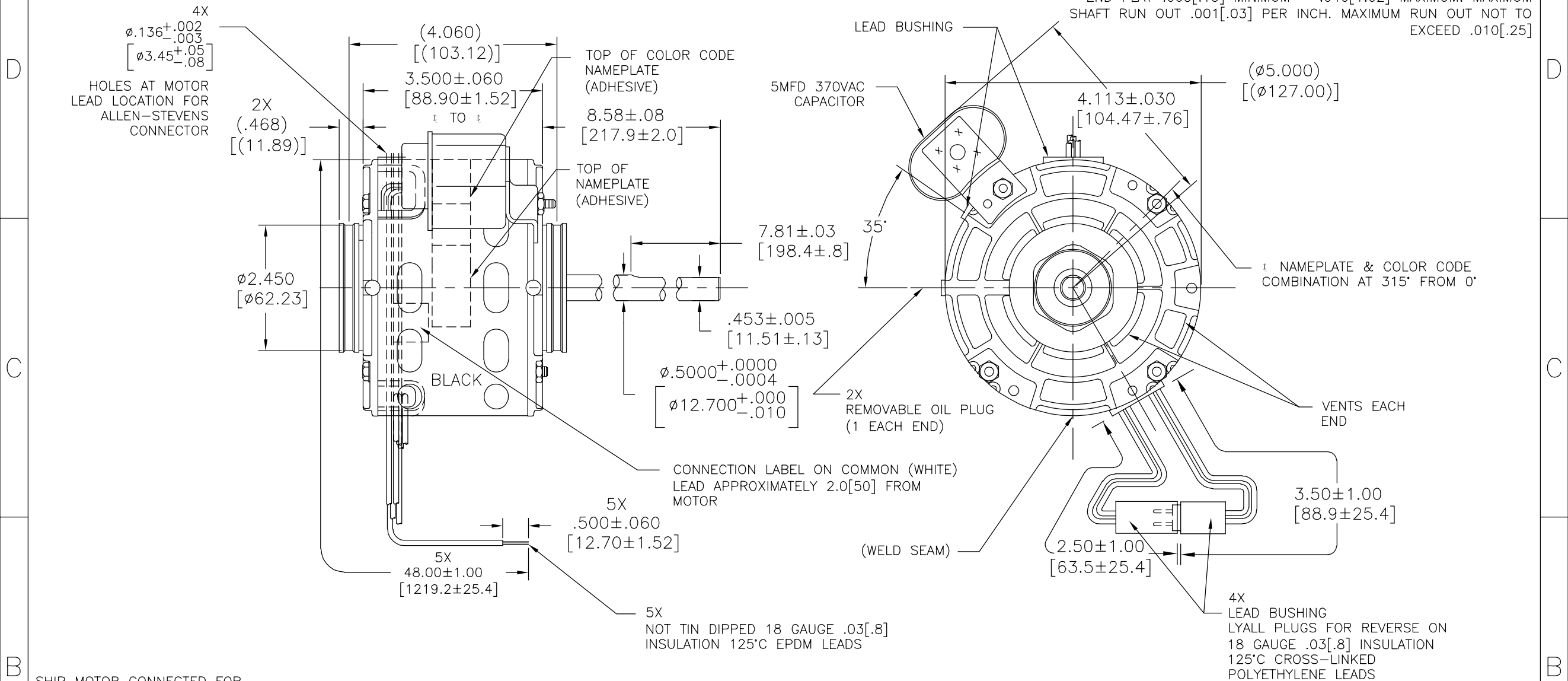
Electrical Type	Permanent Split Capacitor	Starting Method	Across The Line
Poles	6	Rotation	Reversible
Mounting	Resilient Rings	Motor Orientation	Horizontal
Drive End Bearing	Sleeve	Opp Drive End Bearing	Sleeve
Frame Material	Rolled Steel	Shaft Type	Flat
Overall Length	12.54 in	Frame Length	2.92 in
Shaft Diameter	0.500 in	Shaft Extension	8 5/8 in
Outline Drawing	669-S01		

This is an uncontrolled document once printed or downloaded and is subject to change without notice. Date Created:08/24/2022

CUSTOMER IS SOLELY RESPONSIBLE FOR MOTOR PERFORMANCE AND SUITABILITY IN APPLICATIONS FOR CUSTOMER'S USES.

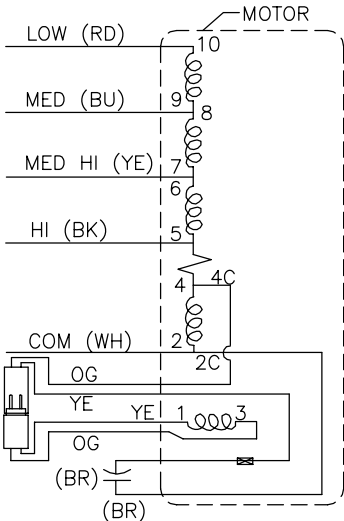
REV	ECO	REV BY	DATE	APPD	DATE
F	0029000	I.ORTIZ	10-16-2012	M.AVILA	10-16-2012

END PLAY .005[.13] MINIMUM - .040[1.02] MAXIMUM. MAXIMUM SHAFT RUN OUT .001[.03] PER INCH. MAXIMUM RUN OUT NOT TO EXCEED .010[.25]



SHIP MOTOR CONNECTED FOR CWLE ROTATION

SCHEMATIC-152



ELECTRICALLY PER SAMPLE S-9414D

COLOR CODE NAMEPLATE: 63T7452-7 BK HI 1.7A 1/10HP YE MED HI 1.3A 1/15HP BU MED .85A 1/25HP RD LO .62A 1/35HP WH COM	CONNECTION LABEL 63T7433-264	CWLE	PLUG IN ORANGE LEAD TO ORANGE LEAD
		CCWLE	PLUG TO ORANGE LEAD TO YELLOW LEAD

GEOMETRIC CHARACTERISTICS & SYMBOLS

- FLATNESS
- STRAIGHTNESS
- ANGULARITY
- PERPENDICULARITY (SQUARENESS)
- PARALLELISM
- ROUNDNESS (CIRCULARITY)
- CYLINDRICITY
- PROFILE OF ANY SURFACE
- PROFILE OF ANY LINE
- RUNOUT
- TRUE POSITION
- CONCENTRICITY
- SYMMETRY

ASME Y14.5M 1994

UNLESS OTHERWISE SPECIFIED DIM. TOLERANCES ARE AS FOLLOWS:

INCH X XX XXX XXXX

mm ± 0.1 ± 0.2 ± 0.005 ± 0.0005

mm ± 0.5 ± 0.13 ± 0.013

ANG. ± 50 DEG

REMOVE BURRS & BREAK SHARP EDGES:

INCH .003-.015 mm 0.1-0.4

CORNER FILLETS TO:

INCH .020 mm 0.5

MACHINE SURFACES:

INCH 125 mm 3.2

METRIC DIMS. SHOWN IN [BRACKETS]

DR BY:

TLB

APPD:

DRB

THIRD ANGLE PROJECTION

CONFIDENTIAL: THIS DRAWING AND ITS INFORMATION ARE THE EXCLUSIVE AND CONFIDENTIAL PROPERTY OF REGAL-BELOIT CORPORATION AND ARE NOT TO BE DISCLOSED, DUPLICATED, DISTRIBUTED OR OTHERWISE USED WITHOUT THE WRITTEN CONSENT OF REGAL-BELOIT CORPORATION. -ALL RIGHTS RESERVED.

ROT: REVERSIBLE

NAMEPLATE DATA:



Tipp City, OH
® THERMALLY PROTECTED



SER. DATE, & PO# PLT LTR MOD DE3E174N' STOCK NO. 669
VOLTS 115 HZ 60 AMPS 1.7
RPM 1075 SP PH1 CAP 5MFD 370VAC
INS CL AMB °C HP 1/10 CONT AO
BRG SLV ASSEMBLED IN MEXICO



REGAL-BELOIT CORPORATION

DESCRIPTION

MODEL-RFHP-42FR
OUTLINE

SIZE

C

DWG NO

669

SCALE NONE

SHEET 1

