

PRODUCT INFORMATION PACKET

Model No: D974

Catalog No: D974

Fan and Blower Motor, 1/2-1/3-1/4 HP, 1 Ph, 60 Hz, 277 V, 825 RPM, 3 Speed, 48 Frame, OAO



Regal and are trademarks of Regal Rexnord Corporation or one of its affiliated companies.
©2022 Regal Rexnord Corporation, All Rights Reserved. MC017097E

Nameplate Specifications

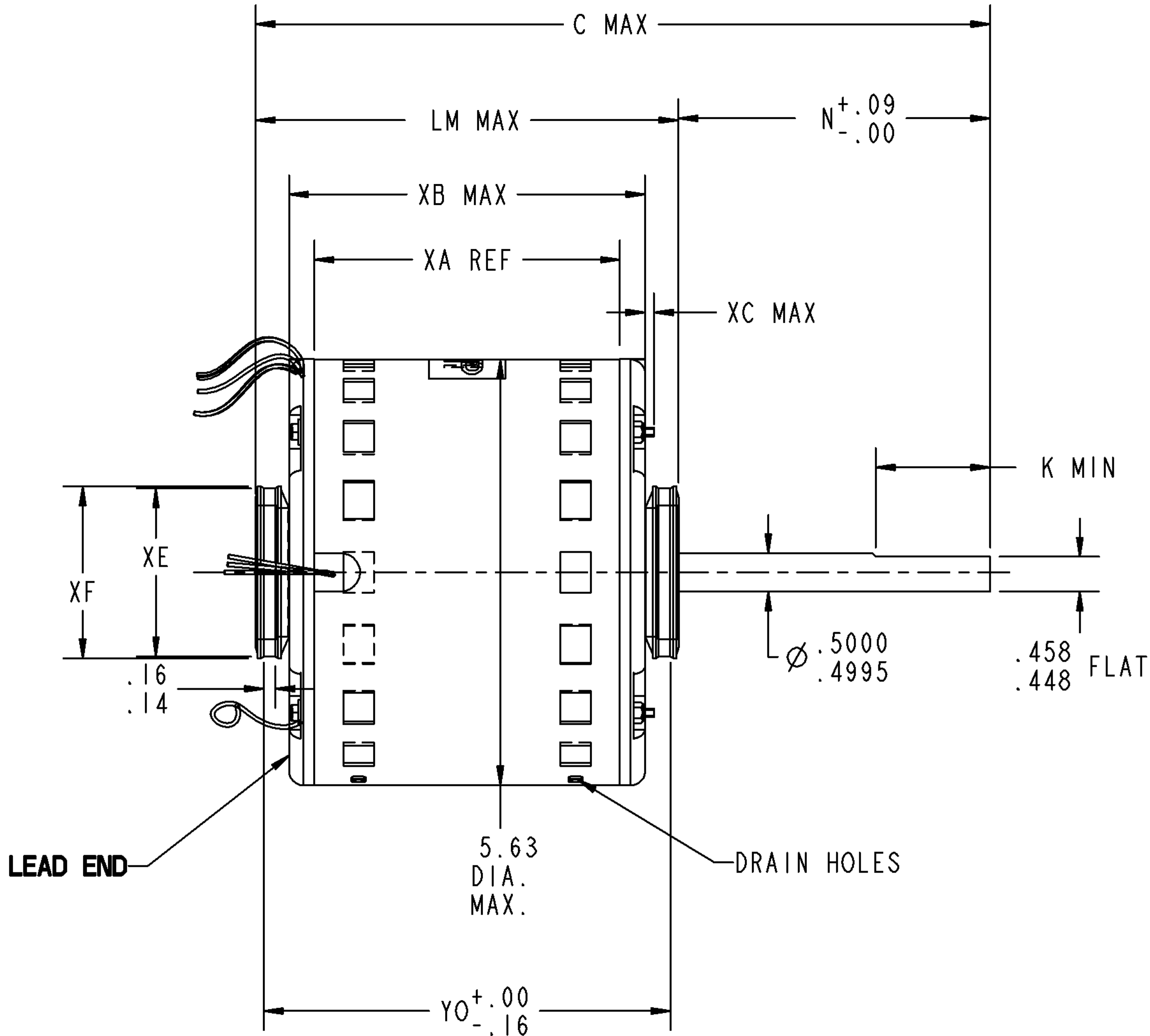
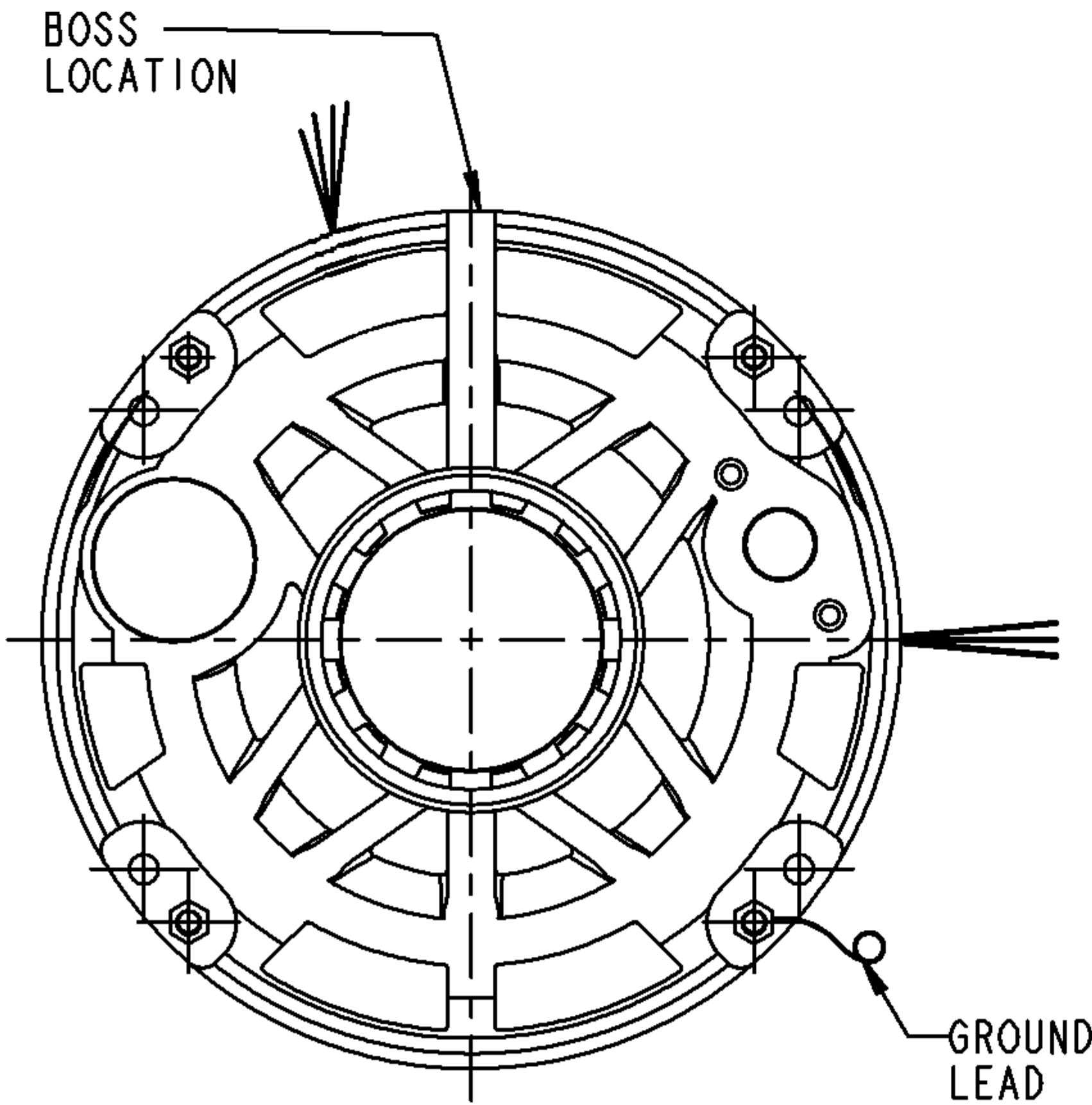
Output HP	1/2-1/3-1/4 Hp	Output KW	0.37 kW
Frequency	60 Hz	Voltage	277 V
Current	2.30-1.60-1.20 A	Speed	825 rpm
Service Factor	1	Phase	1
Duty	Continuous Air Over	Insulation Class	B
Frame	48	Enclosure	Open Air Over
Thermal Protection	Thermally Protected	Ambient Temperature	40 °C
UL	Recognized	CSA	Y
CE	N	Number of Speeds	3

Technical Specifications

Electrical Type	Permanent Split Capacitor	Poles	8
Rotation	Reversible	Mounting	Resilient Rings
Motor Orientation	Any	Drive End Bearing	Sleeve
Opp Drive End Bearing	Sleeve	Frame Material	Rolled Steel
Shaft Type	Flat	Overall Length	10.64 in
Frame Length	4.57 in	Shaft Diameter	0.500 in
Shaft Extension	4.50 in	Thru-bolts Extension	N/R in
Outline Drawing	5KCP39NFAE16S	Connection Drawing	NP24X327722

This is an uncontrolled document once printed or downloaded and is subject to change without notice. Date Created:08/24/2022

VENTILATION SYSTEM		RBC PROPRIETARY AND CONFIDENTIAL INFORMATION This document is the property of REGAL BELOIT CORPORATION ("RBC") including its subsidiaries and divisions and contains proprietary information of RBC. This document is loaned on the express condition that neither it nor the information contained therein shall be disclosed to others without the express written consent of RBC, and that the information shall be used by the recipient only as approved expressly by RBC. This document shall be returned to RBC upon its request. This document may be subject to certain restrictions under U.S. export control laws and regulations.	REVISIONS			
SHELL VENTS	OPEN		REV.	DESCRIPTION	DATE	APPROVED
ENDSHIELD (OPP. LEAD END)	OPEN		2	RELEASED FOR PROD PER IS09-1492	4/17/09	AVL
ENDSHIELD (LEAD END)	OPEN		3	REVERSE LD EXIT FROM ES TO SHELL & MAT'L	5/20/09	GFS




NOTE:
1. DIMENSIONS SHOWN ARE NOMINAL UNLESS/OTHERWISE SPECIFIED.

			2.44	2.50	.14	N/A	5.890
			XE	XF	XC	XD	YO
10.64	4.50	3.60	N/A	N/A	6.09	4.57	5.23
C	N	K	XN	XK	LM	XA	XB

SNO	CONNECTION	COLOR	EXT TYPE	EXT LOC (VIEWING LE)	GAGE	MATERIAL	WALL THK	LENGTH	TERMINATION
1	COMMON LEAD	WHITE	SHELL NOTCH	3:00	18	THERMOPLASTIC	4/64	27.00	.50 BWS
2	REV LEAD	YELLOW	SHELL NOTCH	11:20	18	EPDM	2/64	3.00	.25 MALE 1SQC
3	CAPACITOR LEAD	BROWN	SHELL NOTCH	3:00	18	THERMOPLASTIC	4/64	27.00	.25 FQC
4	REV LEAD	ORANGE	SHELL NOTCH	11:20	18	EPDM	2/64	3.00	.25 MALE 1SQC
5	CAPACITOR LEAD	BRN/WHT	SHELL NOTCH	3:00	18	THRMOPLASTIC	4/64	27.00	.25 FQC
6	REV LEAD	BROWN	SHELL NOTCH	11:20	18	EPDM	2/64	3.00	.25 FISQC LO INS FORCE
7	HIGH SPEED LEAD	BLACK	SHELL NOTCH	3:00	18	THERMOPLASTIC	4/64	27.00	.50 BWS
8	MED SPEED LEAD	BLUE	SHELL NOTCH	3:00	18	THERMOPLASTIC	4/64	27.00	.50 BWS
9	LOW SPEED LEAD	RED	SHELL NOTCH	3:00	18	THERMOPLASTIC	4/64	27.00	.50 BWS
10	REV LEAD	PURPLE	SHELL NOTCH	11:20	18	EPDM	2/64	3.00	.25 FISQC LO INS FORCE
11	GROUND	GRN-YEL	CLAMPSCREW	4:30	18	THERMOPLASTIC	2/64	12.00	#10 SERR EYELET

NAMEPLATE DATA	
MODEL	5KCP39NFAE16S
CUST P/N	MODEL D974
HP	1/2-1/3-1/4
RPM	825(3SPD)
VOLTS	277
HZ	60
* SPEEDS	3
AMPS	2.30 - 1.60 - 1.20
CAP REQ'D-1	15.00µfd/370Volts
CAP REQ'D-2	N/R
CONN. DRW*	NP24X327722
ROTATION	CCW/CW (VIEWED FROM LE)



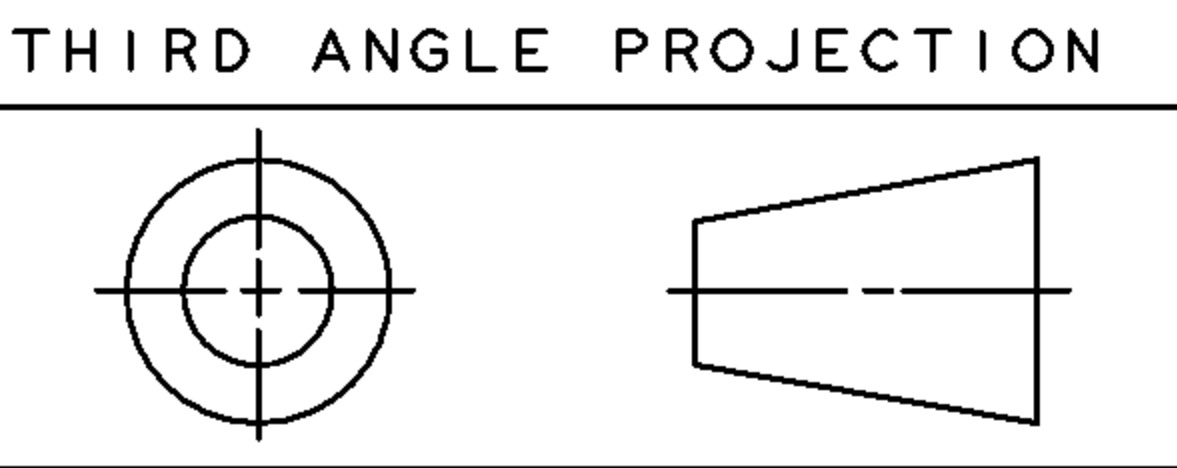
REGAL-BELOIT CORPORATION
FORTWAYNE, INDIANA

TITLE

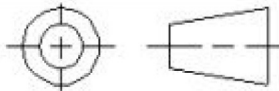
MOTOR OUTLINE
(CUSTOMER NAME : FASCO)

SIZE B DRAWING 5KCP39NFAE16S REV 2

SCALE: NOISSUED: 4/17/09SHEET 1 of 1



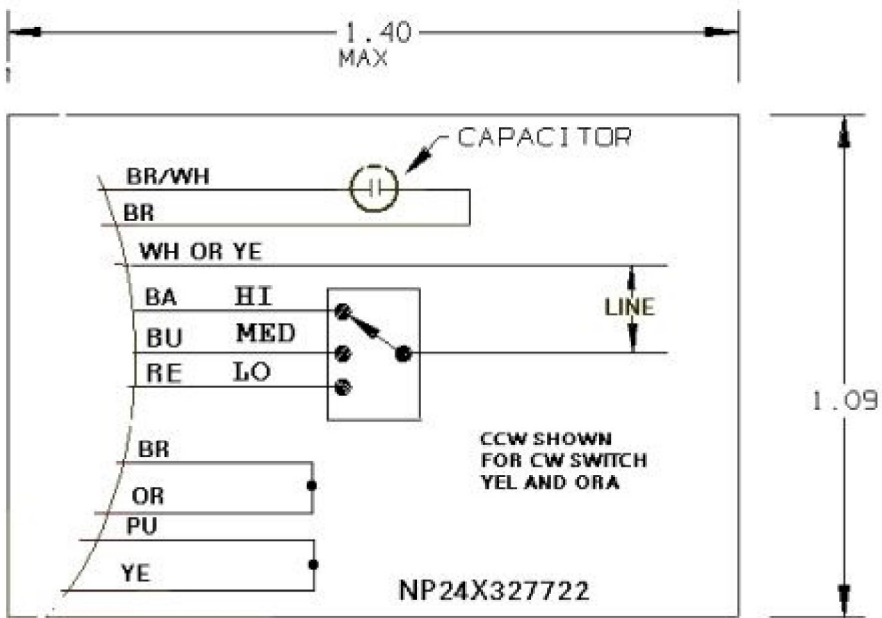
THIRD ANGLE PROJECTION		REVISIONS			
REV	DESCRIPTION	DATE	APPROVED		
1	CAS 5/3/01 ELEC FORMAT				



Uncontrolled Copy


CONFIDENTIAL AND PROPRIETARY

This document is the property of General Electric Company and contains proprietary and confidential information of the Motor Business Group (MBG). The document is loaned on the express conditions that neither it nor the information contained therein shall be disclosed to others without the express consent of MBG and that the information shall be used by the recipient only as approved expressly by MBG. Also, the document shall be returned to MBG upon its request.



NP24X327722

NOTE: THIS DRAWING WILL BE ELECTRONICALLY REPRODUCED BY THE HVAC FAN MOTOR NAMEPLATE SYSTEM.

UNLESS OTHERWISE SPECIFIED	SIGNATURES	DATE	 GE Motors Fort Wayne, Indiana	
DIMENSIONS ARE IN INCHES TOLERANCES ON: 2 PL DECIMALS ± 3 PL DECIMALS ± ANGLES ± FRACTIONS ±	DRAWN	CAS 12/14/94	<h2 style="margin: 0;">NAMEPLATE LABEL</h2>	
	CHECKED			
	ENGRD			
	ISSUED			
MATERIAL:	CAD NO		SIZE	FSCM NO
APPLIED PRACTICES:			A	
			SCALE	3
			DWG NO	NP24X327722
			SHEET	1 OF 1

F39:XPB8