

PRODUCT INFORMATION PACKET

Model No: 3S051

Catalog No: 3S051

OEM Replacement Motor, 1/4 HP, 1 Ph, 60 Hz, 460/400 V, 1100/900 RPM, 1 Speed, 48 Frame, TEAO



Regal and are trademarks of Regal Rexnord Corporation or one of its affiliated companies.
©2022 Regal Rexnord Corporation, All Rights Reserved. MC017097E

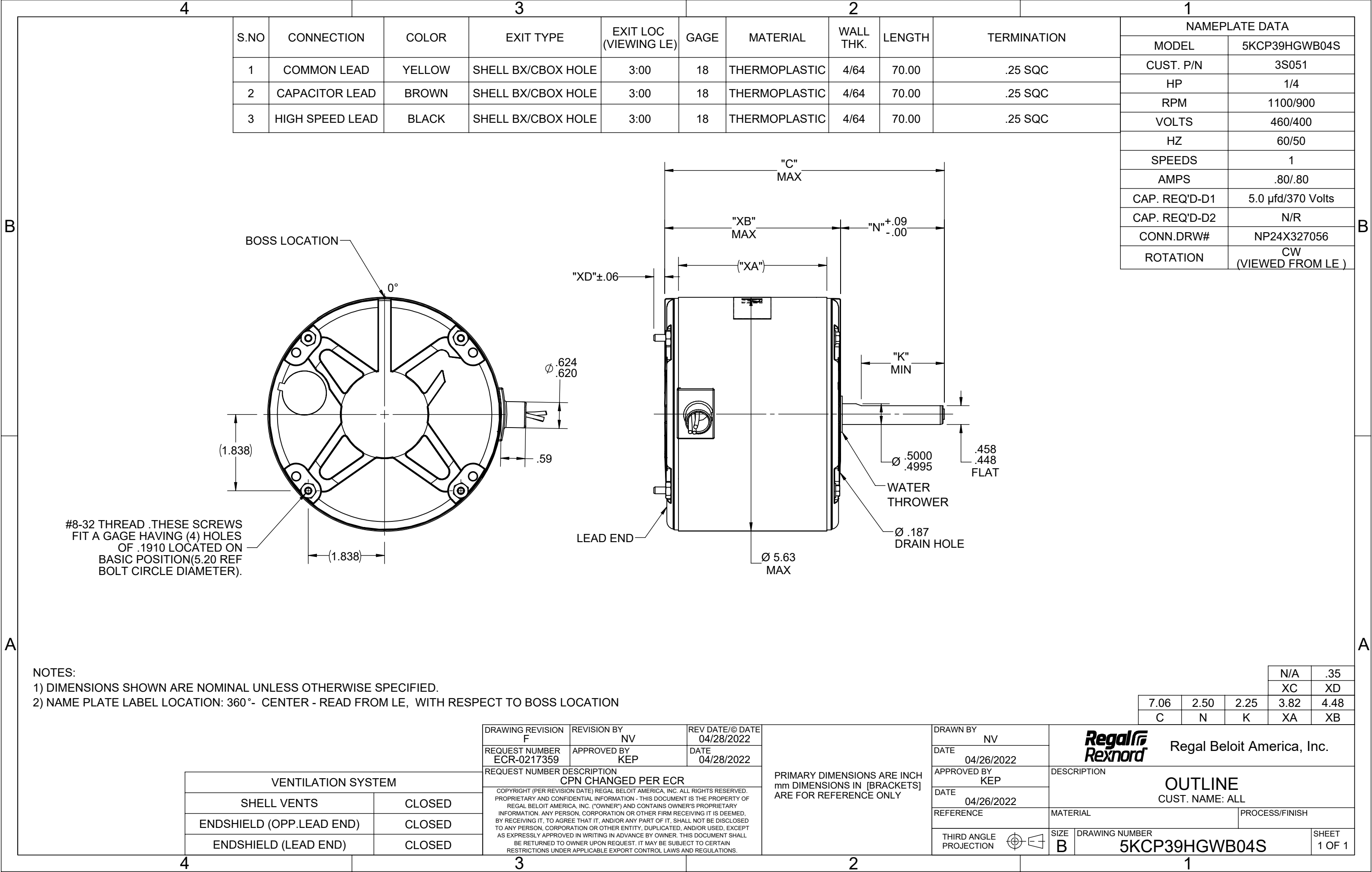
Nameplate Specifications

| | | | |
|--------------------|---------------------|---------------------|---------------------------|
| Output HP | 1/4 Hp | Output KW | 0.19 kW |
| Frequency | 60 Hz | Voltage | 460/400 V |
| Current | 0.80/ 0.80 A | Speed | 1100/900 rpm |
| Service Factor | 1 | Phase | 1 |
| Duty | Continuous Air Over | Insulation Class | B |
| Frame | 48 | Enclosure | Totally Enclosed Air Over |
| Thermal Protection | Thermally Protected | Ambient Temperature | 40 °C |
| UL | Recognized | CSA | Y |
| CE | Y | Number of Speeds | 1 |

Technical Specifications

| | | | |
|-----------------------|---------------------------|--------------------|----------------|
| Electrical Type | Permanent Split Capacitor | Poles | 6 |
| Rotation | Clockwise | Mounting | Extended Studs |
| Motor Orientation | Vertical Shaft Down | Drive End Bearing | Ball |
| Opp Drive End Bearing | Ball | Frame Material | Rolled Steel |
| Shaft Type | Flat | Overall Length | 7.06 in |
| Frame Length | 3.82 in | Shaft Diameter | 0.500 in |
| Shaft Extension | 2.50 in | | |
| Outline Drawing | 5KCP39HGWB04S | Connection Drawing | NP24X327056 |

This is an uncontrolled document once printed or downloaded and is subject to change without notice. Date Created:08/24/2022



4

3

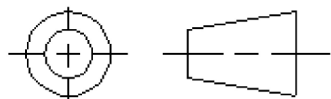
2

1

3 of 4

THIRD ANGLE PROJECTION

REVISIONS



REV

DESCRIPTION

DATE

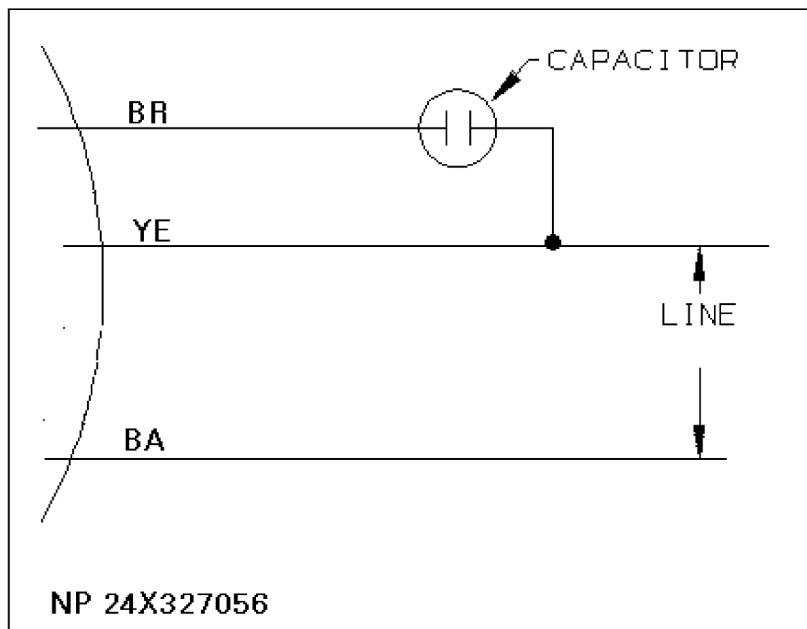
APPROVED

1 CAS 2/11/99 ELECTRONIC FORMAT

CONFIDENTIAL AND PROPRIETARY

This document is the property of General Electric Company and contains proprietary and confidential information of the Motor Business Group (MBG). The document is loaned on the express conditions that neither it nor the information contained therein shall be disclosed to others without the express consent of MBG and that the information shall be used by the recipient only as approved expressly by MBG. Also, the document shall be returned to MBG upon its request.

1.40
MAX



1.09

NP 24X327056

NOTE: THIS DRAWING WILL BE ELECTRONICALLY REPRODUCED BY THE HVAC FAN MOTOR NAMEPLATE SYSTEM.

UNLESS OTHERWISE SPECIFIED

SIGNATURES

DATE



GE Motors

Fort Wayne, Indiana

DIMENSIONS ARE IN INCHES

DRAWN RL UETRECHT

4/3/1972

TOLEANCES ON:

CHECKED

2 PL DECIMALS ±

ENGRG

3 PL DECIMALS ±

ISSUED

ANGLES ±

FRACTIONS ±

MATERIAL:

CAD NO

SIZE

FSCM NO

DWG NO

NP 24X327056

APPLIED PRACTICES:

SCALE

3

SHEET

1 OF 1