

PRODUCT INFORMATION PACKET

Model No: 5R022

Catalog No: 5R022

38 WATT Refrigeration Motor, 1550 RPM, 115 Volts, Unit Bearing, TEAO



Regal and are trademarks of Regal Rexnord Corporation or one of its affiliated companies.
©2022 Regal Rexnord Corporation, All Rights Reserved. MC017097E

Nameplate Specifications

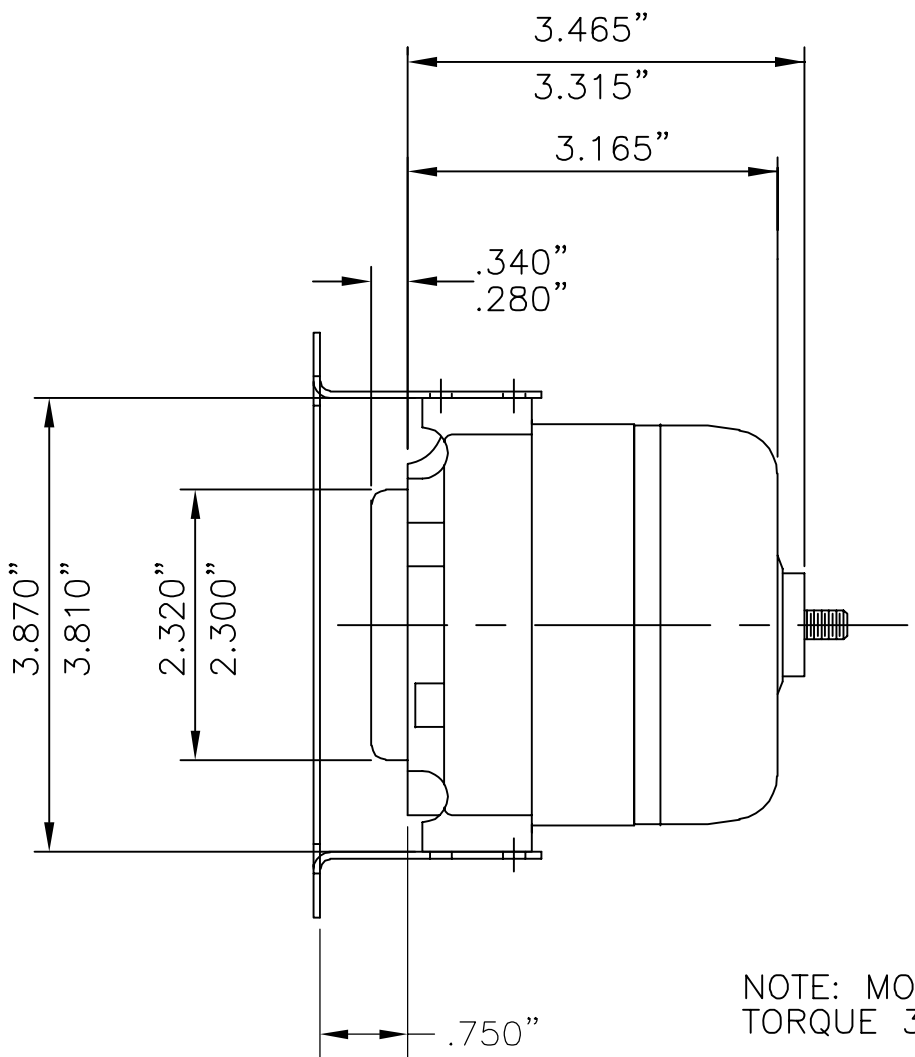
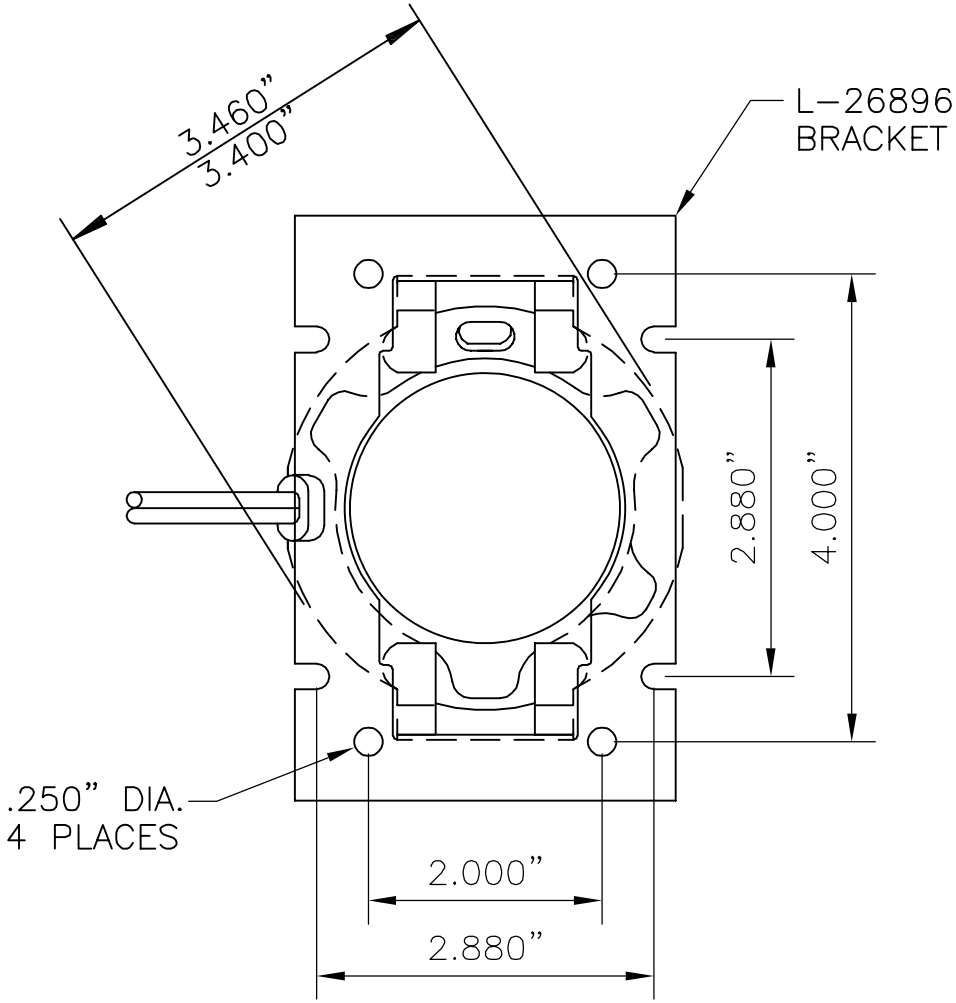
Output Watts	38 W	Frequency	60 Hz
Voltage	115 V	Current	0.9 A
Speed	1550 rpm	Phase	1
Duty	Continuous Air Over	Insulation Class	B
Frame	UNIT BEARING	Enclosure	Totally Enclosed Air Over
Thermal Protection	Electronic	Ambient Temperature	55 °C
UL	Yes	CSA	Y
CE	N		

Technical Specifications

Electrical Type	Electronically Commutated Motor	Starting Method	Across The Line
Poles	4	Rotation	Counterclockwise Opposite Shaft End
Mounting	Bracket	Motor Orientation	Any
Frame Material	Cast Iron	Shaft Type	1/4-20 THREAD
Overall Length	4.59 in	Frame Length	4.26 in
Shaft Diameter	0.250 in	Shaft Extension	0.33 in
Outline Drawing	26999-Erwin		

This is an uncontrolled document once printed or downloaded and is subject to change without notice. Date Created:09/08/2022

NOTE: OUTLINE DIMENSIONS FOR WHICH NO LIMIT IS SPECIFIED ARE NOMINAL AND NOT GUARANTEED AS TO TOLERANCE. ADDITIONAL INFORMATION ON TOLERANCES WILL BE FURNISHED ON SPECIFIC REQUEST.



NOTE: MOUNTING SCREW
TORQUE 3.5 FT. LBS. MAX.

F:\CADFILES\VOL_9\26999



SCALE	1/2"=1"	REVISIONS	BY	DATE
DATE	02-17-10	①		
DR'N	RMH	②		
AP'VD	CKD	③		
		④		
TITLE			NO.	
MOTOR OUTLINE (SSC FULL 1" C.I. WITH L-26896 VSD BRACKET)			S-26999	