

# PRODUCT INFORMATION PACKET

Model No: 3913

Catalog No: 3913

OEM Replacement Motor, 1/2 HP, 1 Ph, 60 Hz, 115 V, 1130 RPM, 4 Speed, 48 Frame, OAO



Regal and are trademarks of Regal Rexnord Corporation or one of its affiliated companies.  
©2022 Regal Rexnord Corporation, All Rights Reserved. MC017097E

**Nameplate Specifications**

Output HP	1/2 Hp	Output KW	0.37 kW
Frequency	60 Hz	Voltage	115 V
Current	8.80 A	Speed	1130 rpm
Service Factor	1	Phase	1
Duty	Continuous Air Over	Insulation Class	B
Frame	48	Enclosure	Open Air Over
Thermal Protection	Thermally Protected	Ambient Temperature	40 °C
UL	Recognized	CSA	Y
CE	N	Number of Speeds	4

**Technical Specifications**

Electrical Type	Permanent Split Capacitor	Poles	6
Rotation	Counterclockwise	Mounting	Lug
Motor Orientation	Any	Drive End Bearing	Sleeve
Opp Drive End Bearing	Sleeve	Frame Material	Rolled Steel
Shaft Type	Flat	Overall Length	9.31 in
Frame Length	4.57 in	Shaft Diameter	0.500 in
Shaft Extension	4.00 in		
Outline Drawing	5KCP39NGY835S	Connection Drawing	NP24X327019

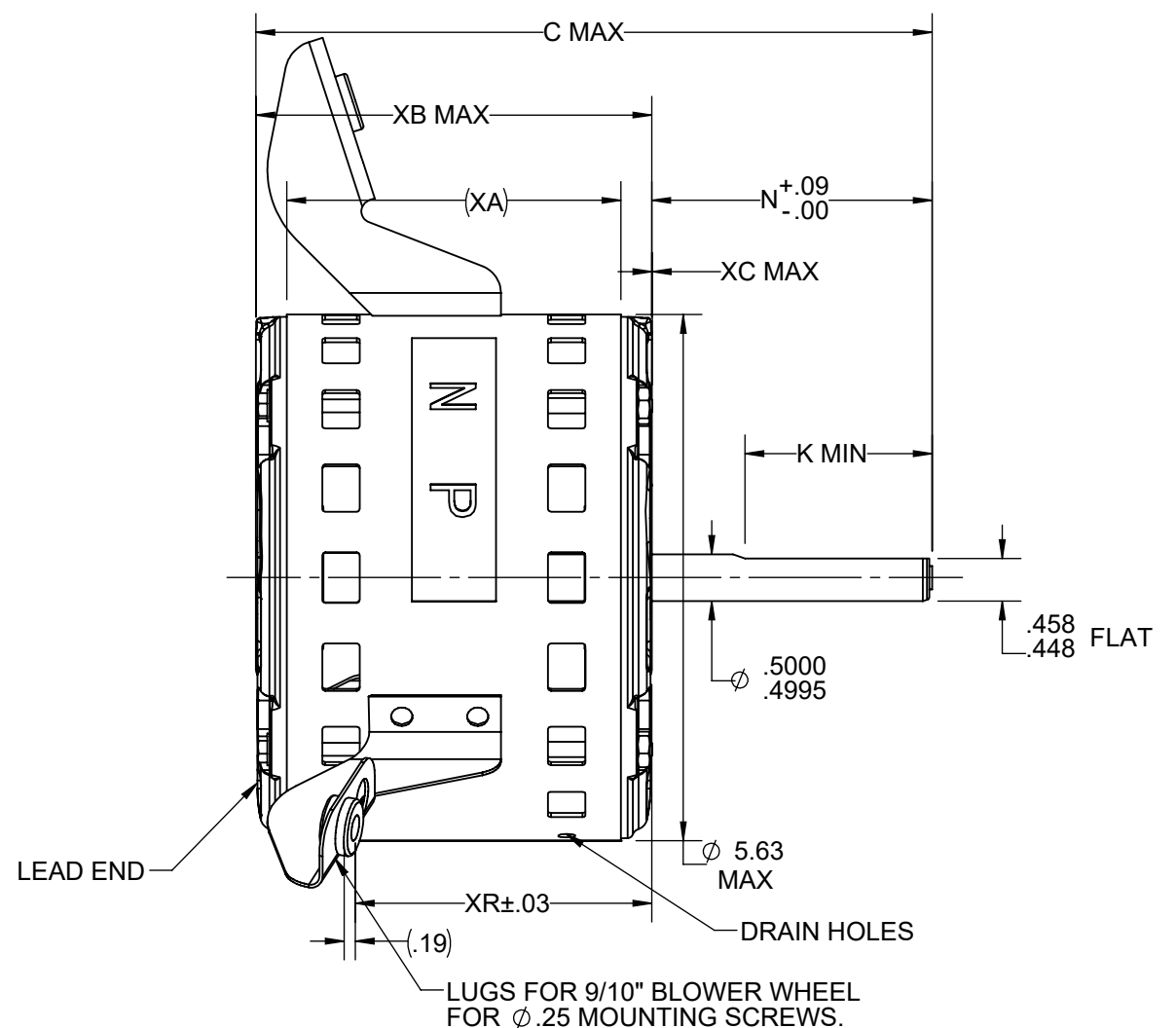
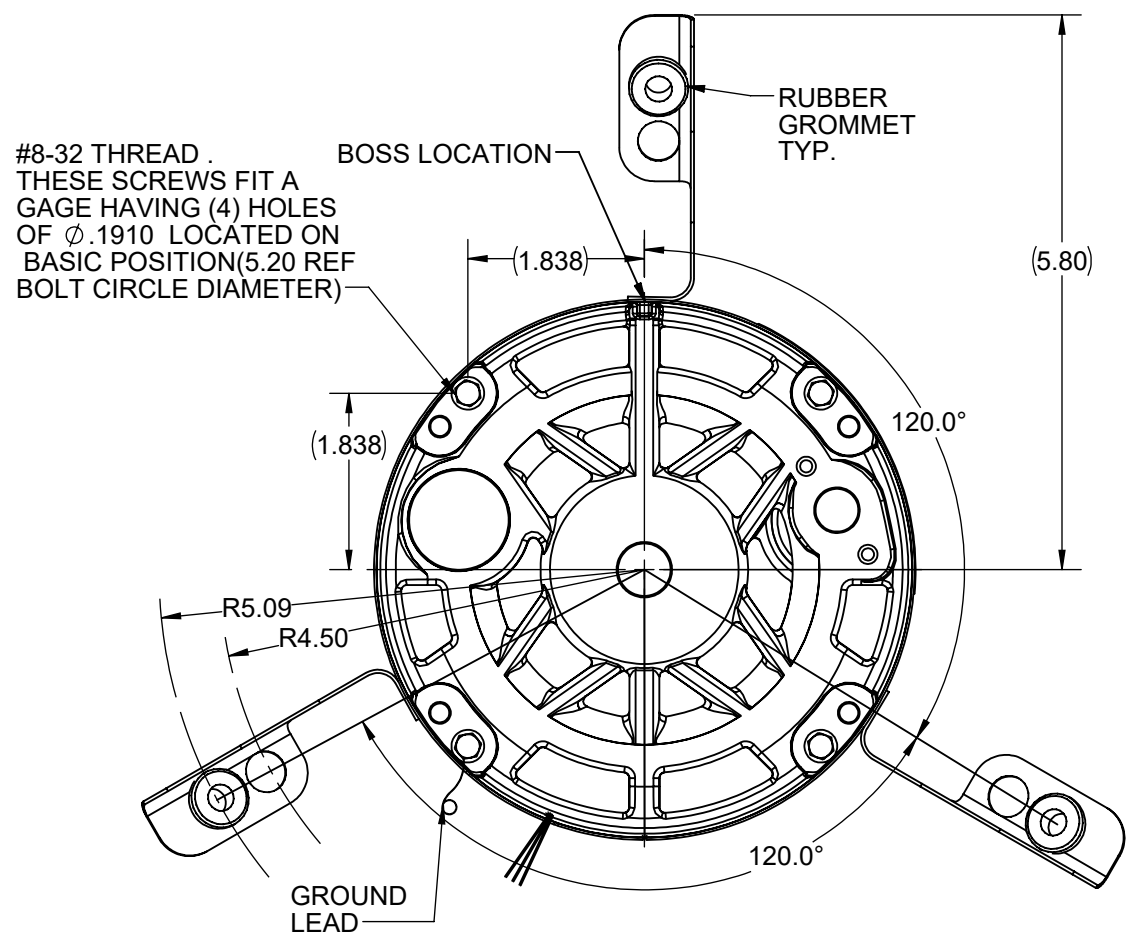
This is an uncontrolled document once printed or downloaded and is subject to change without notice. Date Created:08/24/2022

S.NO	CONNECTION	COLOR	EXIT TYPE	EXIT LOC (VIEWING LE)	GAGE	MATERIAL	WALL THK.	LENGTH	TERMINATION
1	COMMON LEAD	WHITE	SHELL NOTCH	7:00	18	THERMOPLASTIC	4/64	25.00	.25 FISQC LO INS FORCE
2	CAPACITOR LEAD	BROWN	SHELL NOTCH	7:00	18	THERMOPLASTIC	4/64	20.00	.25 SQC
3	CAPACITOR LEAD	BROWN	SHELL NOTCH	7:00	18	THERMOPLASTIC	4/64	20.00	.25 SQC
4	HIGH SPEED LEAD	BLACK	SHELL NOTCH	7:00	18	THERMOPLASTIC	4/64	25.00	.25 FISQC LO INS FORCE
5	MED. HI SPEED LEAD	BLUE	SHELL NOTCH	7:00	18	THERMOPLASTIC	4/64	25.00	.25 FISQC LO INS FORCE
6	MED. LOW SPEED LEAD	ORANGE	SHELL NOTCH	7:00	18	THERMOPLASTIC	4/64	25.00	.25 FISQC LO INS FORCE
7	LOW SPEED LEAD	RED	SHELL NOTCH	7:00	18	THERMOPLASTIC	4/64	25.00	.25 FISQC LO INS FORCE
8	GROUND LEAD	GRN-YEL	CLAMP SCREW	7:30	18	THERMOPLASTIC	2/64	12.00	.32 EYELET

NAMEPLATE DATA	
MODEL	5KCP39NGY835S
CUST. P/N	STOCK NO 3913
HP	1/2
RPM	1130(4 SPD)
VOLTS	115
HZ	60
SPEEDS	4
AMPS	8.80
CAP. REQ'D-D1	20.0 µfd/370 Volts
CAP. REQ'D-D2	N/R
CONN.DRW#	NP24X327019
ROTATION	CCW (VIEWED FROM LE)

B  
A

B  
A



- NOTE:
- 1) DIMENSIONS SHOWN ARE NOMINAL UNLESS OTHERWISE SPECIFIED.
  - 2) NAMEPLATE LABEL LOCATION: 315° - CLOSE TO LE AS POSSIBLE - READ FROM LE.
  - 3) THE THREE LUGS SHOULD FIT A CONICAL GAGE PLATE WITH THREE PINS Ø .25 LOCATED ON THE BASIC POSITIONS.
  - 4) MAX. VARIATION BETWEEN ALL LUG MOUNTING SURFACES IS .040°
  - 5) COIL LEADS WITH A RUBBER BAND 24A103243 LEAVING 6 INCHES FROM LEAD EXIT TO BUNDLE

VENTILATION SYSTEM	
SHELL VENTS	OPEN
ENDSHIELD (OPP.LEAD END)	OPEN
ENDSHIELD (LEAD END)	OPEN

DRAWING REVISION C	REVISION BY	REV DATE/© DATE
REQUEST NUMBER NMR-0212840	APPROVED BY	DATE
REQUEST NUMBER DESCRIPTION SLEEVE TO BALL CONVERSION PER NMR		
<small>COPYRIGHT (PER REVISION DATE) REGAL BELOIT AMERICA, INC. ALL RIGHTS RESERVED. PROPRIETARY AND CONFIDENTIAL INFORMATION - THIS DOCUMENT IS THE PROPERTY OF REGAL BELOIT AMERICA, INC. ("OWNER") AND CONTAINS OWNER'S PROPRIETARY INFORMATION. ANY PERSON, CORPORATION OR OTHER FIRM RECEIVING IT IS DEEMED, BY RECEIVING IT, TO AGREE THAT IT, AND/OR ANY PART OF IT, SHALL NOT BE DISCLOSED TO ANY PERSON, CORPORATION OR OTHER ENTITY, DUPLICATED, AND/OR USED, EXCEPT AS EXPRESSLY APPROVED IN WRITING IN ADVANCE BY OWNER. THIS DOCUMENT SHALL BE RETURNED TO OWNER UPON REQUEST. IT MAY BE SUBJECT TO CERTAIN RESTRICTIONS UNDER APPLICABLE EXPORT CONTROL LAWS AND REGULATIONS.</small>		

PRIMARY DIMENSIONS ARE INCH  
mm DIMENSIONS IN [BRACKETS]  
ARE FOR REFERENCE ONLY

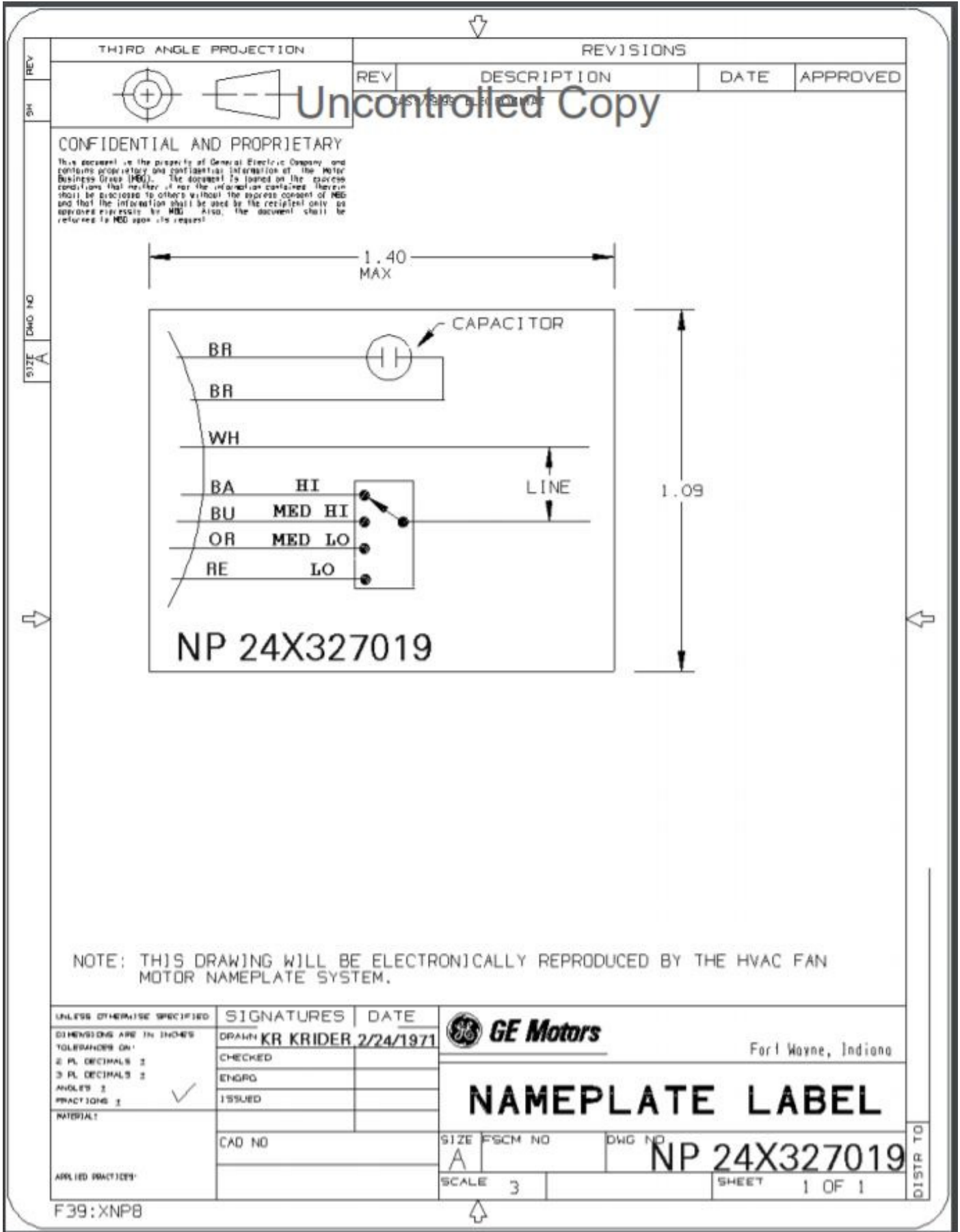
DRAWN BY TRSK	DATE 2/17/2022
APPROVED BY TRSK	DATE 2/17/2022
REFERENCE	
THIRD ANGLE PROJECTION	

**Regal Rexnord** Regal Beloit America, Inc.

DESCRIPTION  
**OUTLINE**  
(CUST. NAME: DEF PUR)

SIZE B	DRAWING NUMBER 5KCP39NGY835S	SHEET 1 OF 1
-----------	---------------------------------	-----------------

	.14	N/R	3.61
	XC	XD	XR
9.31	4.00	3.00	4.57 5.23
C	N	K	XA XB

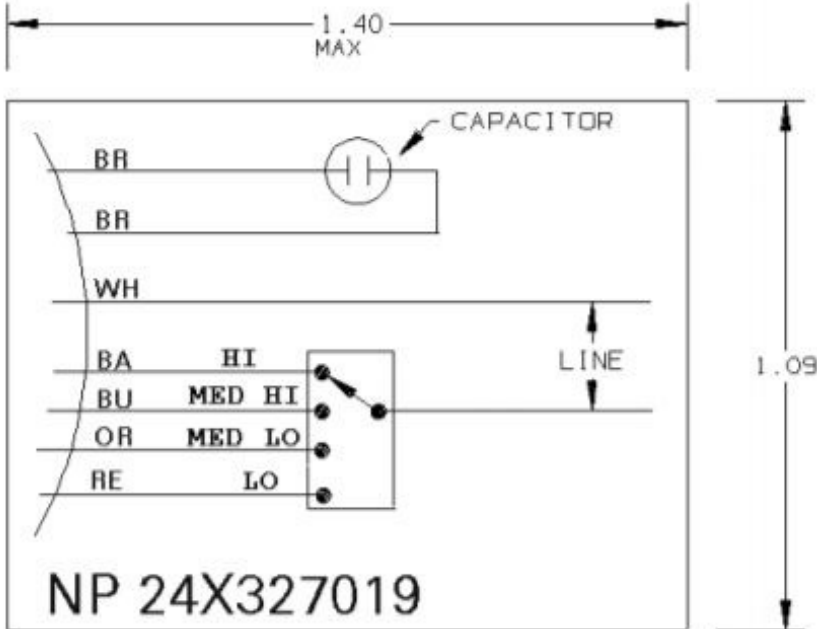


THIRD ANGLE PROJECTION

REVISIONS			
REV	DESCRIPTION	DATE	APPROVED

**CONFIDENTIAL AND PROPRIETARY**

This document is the property of General Electric Company and contains proprietary and confidential information of the Motor Business Group (MBG). The document is loaned on the express conditions that neither it nor the information contained therein shall be disclosed to others without the express consent of MBG and that the information shall be used by the recipient only as approved expressly by MBG. Also, the document shall be returned to MBG upon its request.



NOTE: THIS DRAWING WILL BE ELECTRONICALLY REPRODUCED BY THE HVAC FAN MOTOR NAMEPLATE SYSTEM.

UNLESS OTHERWISE SPECIFIED:

DIMENSIONS ARE IN INCHES  
TOLERANCES ON:  
2 PL. DECIMALS ±  
3 PL. DECIMALS ±  
ANGLES ±  
FRACTIONS ±

MATERIAL:

APPLIED PRACTICES:

SIGNATURES | DATE

DRAWN KR KRIDER 2/24/1971

CHECKED

ENGRG

ISSUED

CAD NO



Fort Wayne, Indiana

**NAMEPLATE LABEL**

SIZE FSCM NO

A

DWG NO

NP 24X327019

SCALE 3

SHEET 1 OF 1

F39:XPB8

DISTR TO