

PRODUCT INFORMATION PACKET

Model No: 5R020

Catalog No: 5R020

16 WATT Refrigeration Motor, 1550 RPM, 115 Volts, Unit Bearing, TEAO



Regal and are trademarks of Regal Rexnord Corporation or one of its affiliated companies.
©2022 Regal Rexnord Corporation, All Rights Reserved. MC017097E

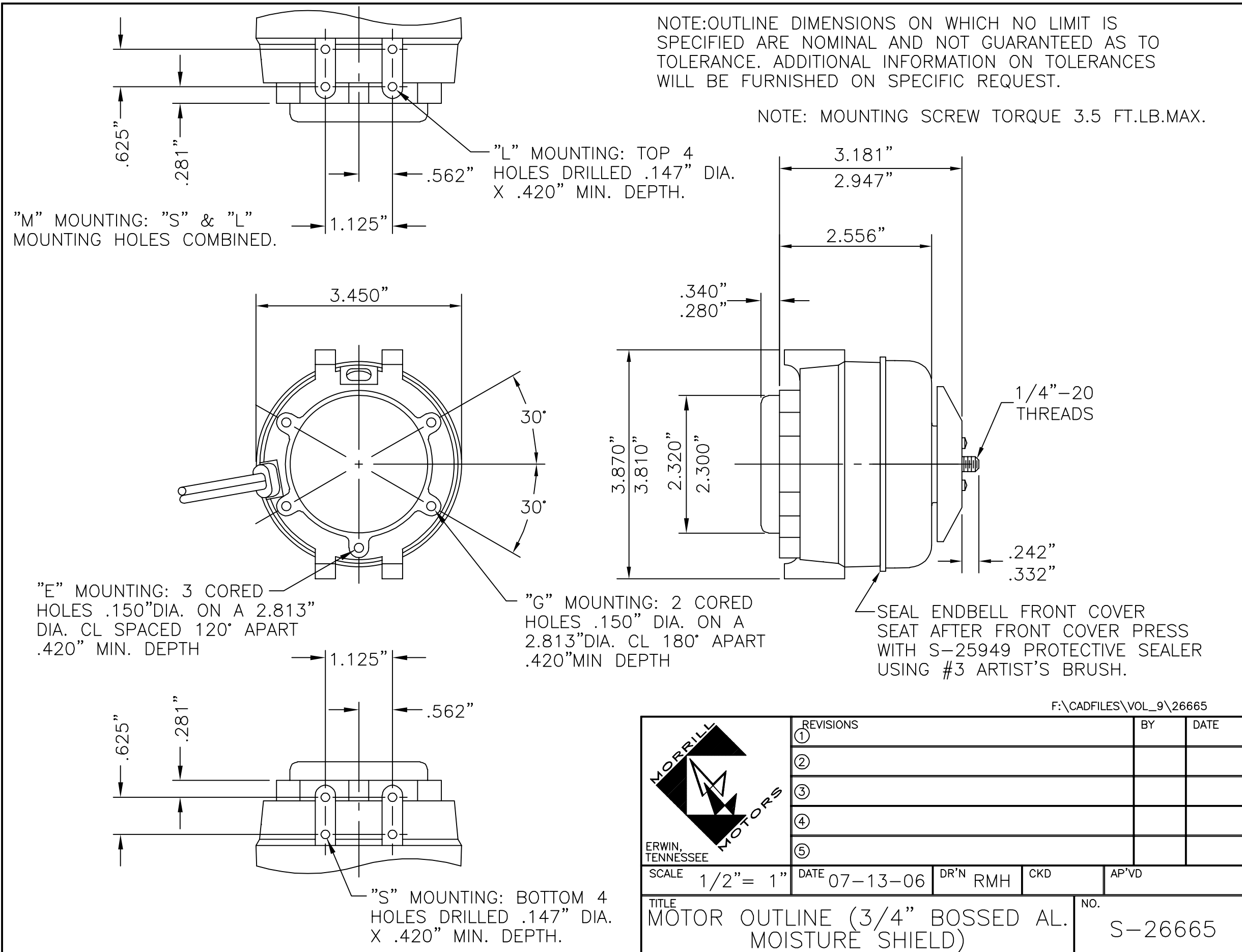
Nameplate Specifications

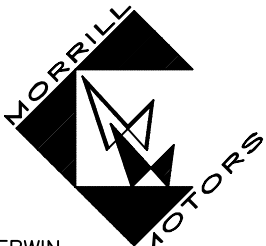
Output Watts	16 W	Frequency	60 Hz
Voltage	115 V	Current	0.4 A
Speed	1550 rpm	Phase	1
Duty	Continuous Air Over	Insulation Class	B
Frame	UNIT BEARING	Enclosure	Totally Enclosed Air Over
Thermal Protection	Electronic	Ambient Temperature	55 °C
UL	Yes	CSA	Y
CE	N		

Technical Specifications

Electrical Type	Electronically Commutated Motor	Starting Method	Across The Line
Poles	4	Rotation	Clockwise Opposite Shaft End
Mounting	2 BOSS/OSE 5 HOLES	Motor Orientation	Any
Frame Material	Aluminum	Shaft Type	1/4-20 THREAD
Overall Length	3.85 in	Frame Length	3.52 in
Shaft Diameter	0.250 in	Shaft Extension	0.33 in
Outline Drawing	26665-Erwin		

This is an uncontrolled document once printed or downloaded and is subject to change without notice. Date Created:09/08/2022



 ERWIN, TENNESSEE	REVISIONS			BY	DATE
	①				
	②				
	③				
	④				
	⑤				
SCALE 1/2" = 1"	DATE 07-13-06	DR'N RMH	CKD	AP'VD	
TITLE MOTOR OUTLINE (3/4" BOSSED AL. MOISTURE SHIELD)				NO. S-26665	