

# PRODUCT INFORMATION PACKET

Model No: 056T17G5312

Catalog No: G649

Explosion Proof Motor, 0.50 HP, 3 Ph, 60 Hz, 208-230/460 V, 1800 RPM, 56 Frame, EPFC



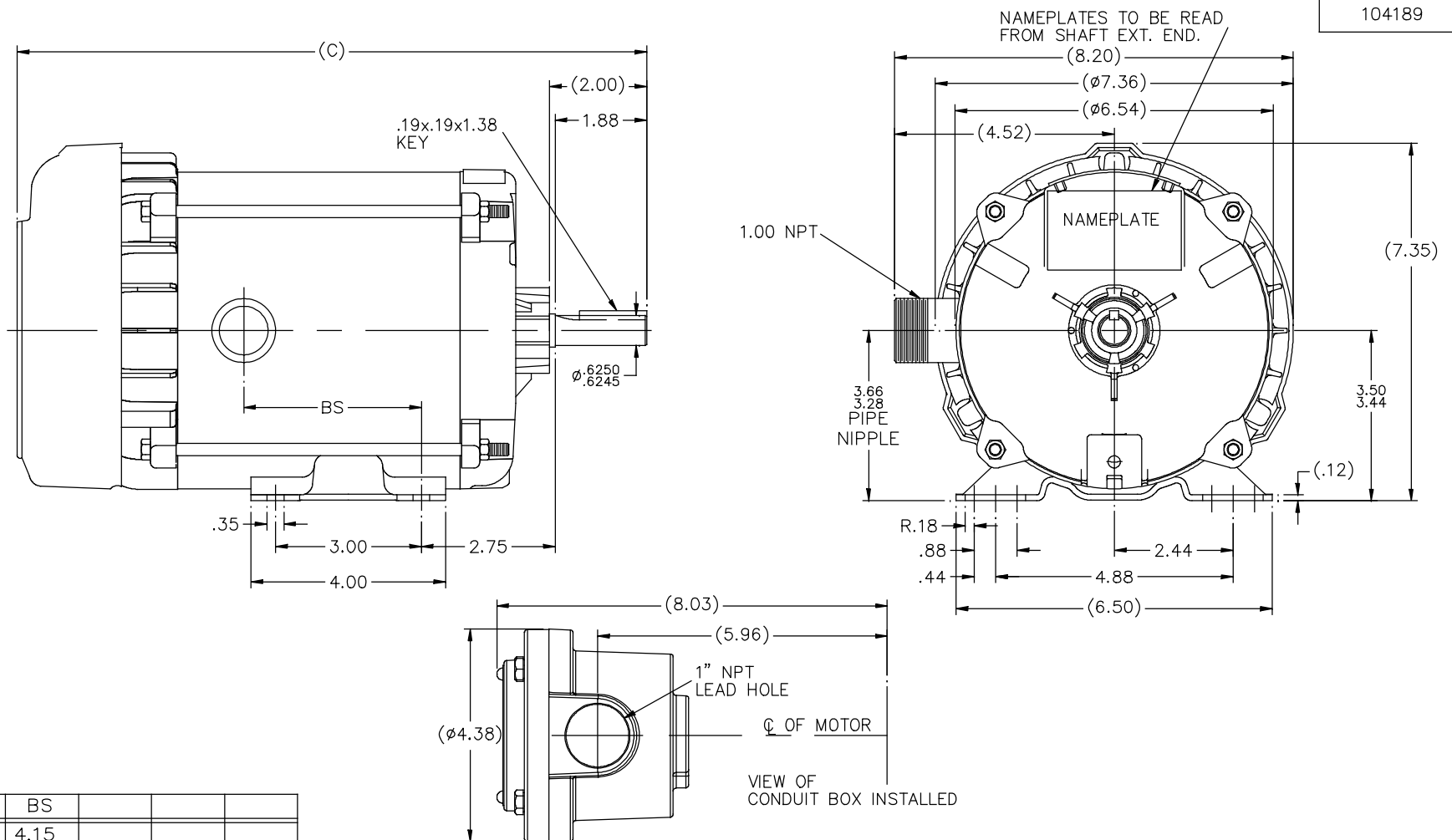
Regal and are trademarks of Regal Rexnord Corporation or one of its affiliated companies.  
©2022 Regal Rexnord Corporation, All Rights Reserved. MC017097E

## Nameplate Specifications

Output HP	0.50 Hp	Output KW	0.37 kW
Frequency	60 Hz	Voltage	208-230/460 V
Current	2.3-2.4/1.2 A	Speed	1725 rpm
Service Factor	1	Phase	3
Efficiency	68 %	Power Factor	61.1
Duty	Continuous	Insulation Class	B
Design Code	NO DESIGN CODE	KVA Code	M
Frame	56	Enclosure	Explosion Proof Fan cooled
Thermal Protection	Automatic	Ambient Temperature	40 °C
Drive End Bearing Size	6203	Opp Drive End Bearing Size	6203
UL	UL Listed And CSA Certified	CSA	Y
CE	N	IP Code	54
Hazardous Location	DIV 1 EXP PROOF CL I GR CD CL II GR FG T3B	Number of Speeds	1


## Technical Specifications

Electrical Type	Squirrel Cage Induction Run	Starting Method	Across The Line
Poles	4	Rotation	Reversible
Resistance Main	40 Ohms	Mounting	Rigid Base
Motor Orientation	Horizontal	Drive End Bearing	Ball
Opp Drive End Bearing	Ball	Frame Material	Rolled Steel
Shaft Type	NEMA 56	Overall Length	13.94 in
Frame Length	6.81 in	Shaft Diameter	0.625 in
Shaft Extension	2 in	Assembly/Box Mounting	F1 ONLY
Connection Drawing	A-EE7335	Outline Drawing	B-104189-681



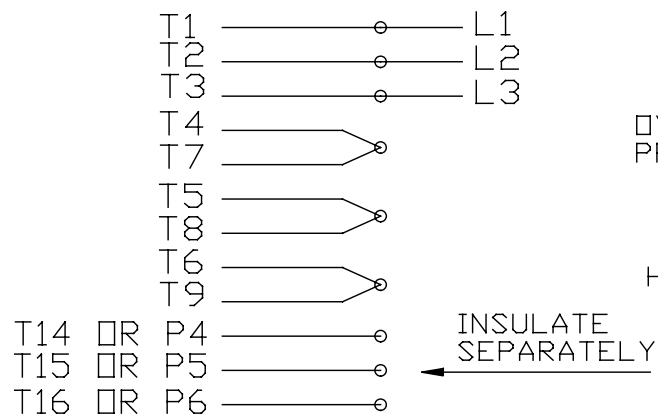
104189

DASH	(C)	BS			
631	13.44	4.15			
681	13.94	4.65			
731	14.44	5.15			
781	14.94	5.65			
831	15.44	6.15			
881	15.94	6.65			
931	16.44	7.15			
981	16.94	7.65			

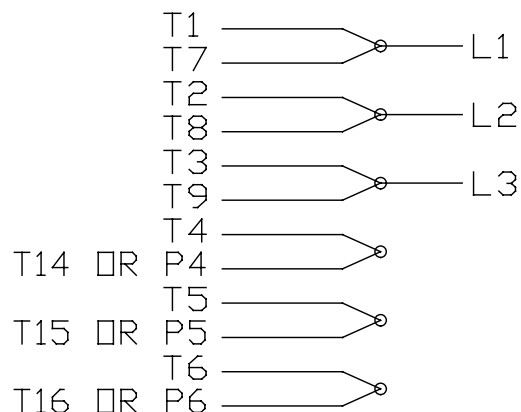
					TOLERANCES UNLESS SPECIFIED	 Regal Beloit America, Inc.		DRAWN MH 11-20-1996				
					DEC. INCHES			CHK	ML 12-02-1996			
4	COND. BOX INSTALLED VIEW UPDATED PER ECR-0044571	UD 10/15/13	ST	X	±.1	TITLE OUTLINE 56 FR. - EXP. PR. - TEFC - 1ø & 3ø	APPD	GK 12-02-1996				
3	REVISED C'BOX PER CN40784A	JJB 02/23/2007	ML	.XX	±.03		SCALE	1=2				
2	ADDED CONDUIT BOX VIEW CN 26686	MRB 03-22-1998		.XXX	±.005		REF					
1	NEW DRAWING CN 23099	MH 12-02-1996		.XXXX	±.0005		FMF					
NO.	REVISION	BY & DATE	CHK	ANG	±7/30"		FINISH		PREV			
THIS DRAWING IN DESIGN AND DETAIL IS OUR PROPERTY AND MUST NOT BE USED EXCEPT IN CONNECTION WITH OUR WORK. ALL RIGHTS OF DESIGN AND INVENTION ARE RESERVED. THIS IS AN ELECTRONICALLY GENERATED DOCUMENT - DO NOT SCALE THIS PRINT							RFP	CAD FILE 104189	SIZE	DRAWING NO.	PAGE OF	REV.
							DIST	WP	B	104189		4

EE7335

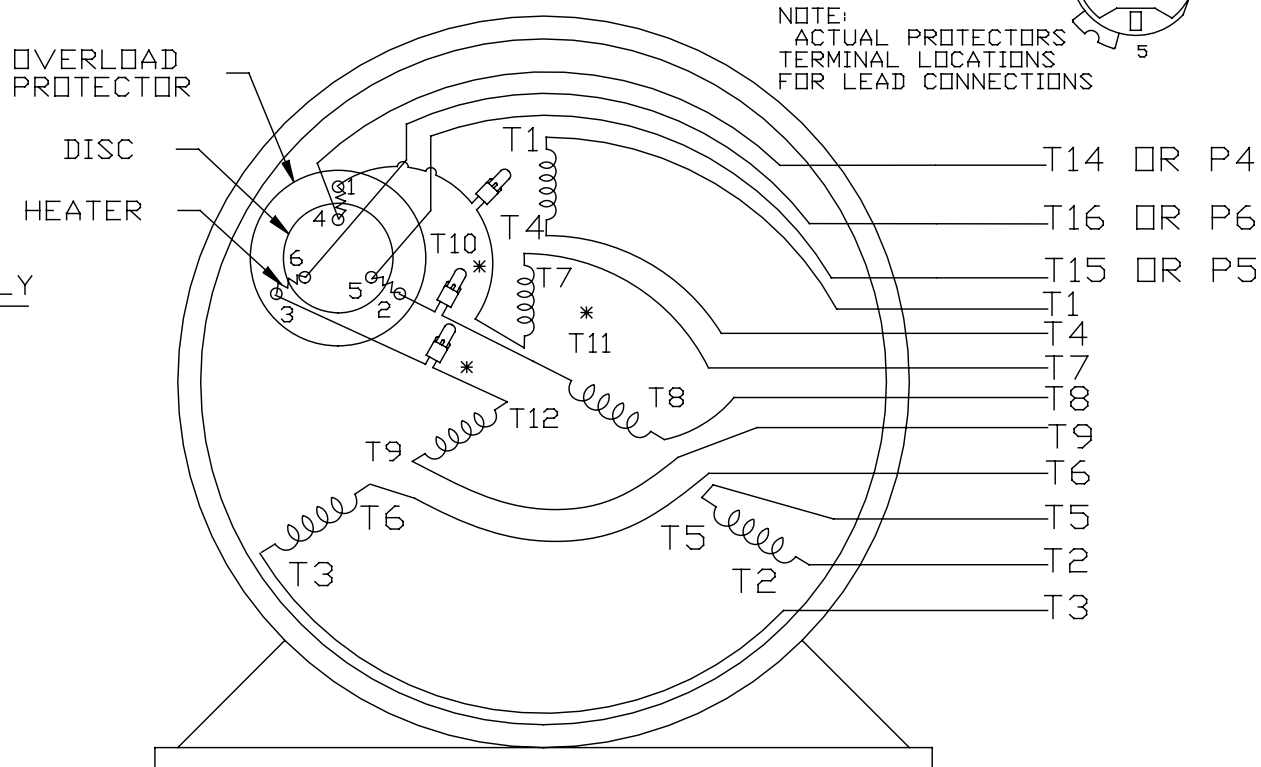
## HIGH VOLTAGE CONNECTIONS



## LOW VOLTAGE CONNECTIONS




## THREE PHASE - DUAL VOLTAGE MOTOR WITH OVERLOAD PROTECTOR



NOTE:  
ACTUAL PROTECTORS  
TERMINAL LOCATIONS  
FOR LEAD CONNECTIONS

VIEW OF TERMINAL END

\* USE PRESSURE CONNECTORS FOR MT2 PLANT ONLY

				TOLERANCES UNLESS SPECIFIED		 <b>Regal Beloit America, Inc.</b>	DRAWN KL 08-09-1993			
17	CHANGED LOGO FROM MARATHON TO REGAL	KIR 02/16/16	AB	DEC.	INCHES		CHK ML 08/10/1993			
16	PRESSURE CONNECTORS QUANTITY WAS 6	PVR 10/29/13	GR	.X	±.1		APPD GK 08/10/1993			
15	PRESSURE CONNECTORS ADDED	GR 03/04/13	SR	.XX	±.01					
14	ADDED ACTUAL PROCECTOR VIEW CN 17481	KL 05/18/94		.XXX	±.005	TITLE CONNECTION DIAGRAM 3Ø-DUAL VOLT WITH OVERLOAD PROTECTOR	SCALE 1=1	REF		
13	REDRAWN IN AUTO CAD	KL 08/11/93		.XXXX	±.0005	MAT'L.		FMF		
NO.	REVISION	BY & DATE	CHK	ANG	±1/2*	FINISH		PREV		
THIS DRAWING IN DESIGN AND DETAIL IS OUR PROPERTY AND MUST NOT BE USED EXCEPT IN CONNECTION WITH OUR WORK ALL RIGHTS OF DESIGN AND INVENTION ARE RESERVED THIS IS AN ELECTRONICALLY GENERATED DOCUMENT - DO NOT SCALE THIS PRINT			RFP		CAD FILE EE7335		SIZE	DRAWING NO.		REV
			DIST				A	EE7335		17

## CERTIFICATION DATA SHEET

Model#: 56T17G5312 E  
 CONN. DIAGRAM: A-EE7335  
 OUTLINE: B-104189-681

WINDING#: ZT408 R8 3  
 ASSEMBLY: F1 ONLY

## TYPICAL MOTOR PERFORMANCE DATA

HP	KW	SYNC. RPM	F.L. RPM	FRAME	ENCLOSURE	KVA CODE	DESIGN
1/2	.37	1800	1725	56	EPFC	M	NO DESIGN CODE

PH	Hz	VOLTS	FL AMPS	START TYPE	DUTY	INSL	S.F	AMB°C	ELEVATION
3	60	208-230/460	2.3-2.4/1.2	ACROSS THE LINE	CONTINUOUS	B3	1.0	40	3300

FULL LOAD EFF: 68	3/4 LOAD EFF: 65.5	1/2 LOAD EFF: 63.5	GTD. EFF	ELEC. TYPE	NO LOAD AMPS
FULL LOAD PF: 61.1	3/4 LOAD PF: 48.5	1/2 LOAD PF: 38	64	SQ CAGE IND RUN	1.8 / .9

F.L. TORQUE	LOCKED ROTOR AMPS	L.R. TORQUE	B.D. TORQUE	F.L. RISE°C
1.5 LB-FT	14 / 7	6.2 LB-FT 413	7.2 LB-FT 480	45

SOUND PRESSURE @ 3 FT.	SOUND POWER	ROTOR WK^2	MAX. WK^2	SAFE STALL TIME	STARTS /HOUR	APPROX. MOTOR WGT
62 dBA	72 dBA	0.05 LB-FT^2	3 LB-FT^2	15 SEC.	2	25 LBS.

## \*\*\* SUPPLEMENTAL INFORMATION \*\*\*

DE BRACKET TYPE	ODE BRACKET TYPE	MOUNT TYPE	ORIENTATION	SEVERE DUTY	HAZARDOUS LOCATION	DRIP COVER	SCREENS	PAINT
STANDARD	STANDARD	RIGID	HORIZONTAL	FALSE	EXP PROOF CL I GR C&D CL II GR F&G T3B	FALSE	NONE	GRAY (POWDER)

BEARINGS		GREASE	SHAFT TYPE	SPECIAL DE	SPECIAL ODE	SHAFT MATERIAL	FRAME MATERIAL
DE	OPE						
BALL	BALL						
6203	6203	POLYREX EM	T	NONE	NONE	1144 STRESSPROOF (C-223)	ROLLED STEEL

THERMO-PROTECTORS				THERMISTORS	CONTROL	SPACE /n HEATERS
THERMOSTATS	PROTECTORS	WDG RTDs	BRG RTDs			
NONE	AUTOMATIC	NONE	NONE	NONE	FALSE	NONE VOLTS

If Inverter equals NONE, contact factory for further information

* N O T E S *	INVERTER TORQUE: NONE					
	INV. HP SPEED RANGE: NONE					
	ENCODER: NONE					
	NONE NONE					
	NONE NONE PPR					
	BRAKE: NONE NONE					
	NONE P/N NONE					
	NONE NONE					
		NONE FT-LB		NONE V		NONE Hz

DATE: 06/29/2017 12:58:05 AM

FORM 3531 REV.3 02/07/99

\*\* Subject to change without notice.



## Data Sheet

Date: 1/2/2019

Customer: \_\_\_\_\_

Attention: \_\_\_\_\_

Submitted by: FAREEDA DUDEKULA



56T17G5312

Submittal

Data @ 460 V

## Motor Load Data

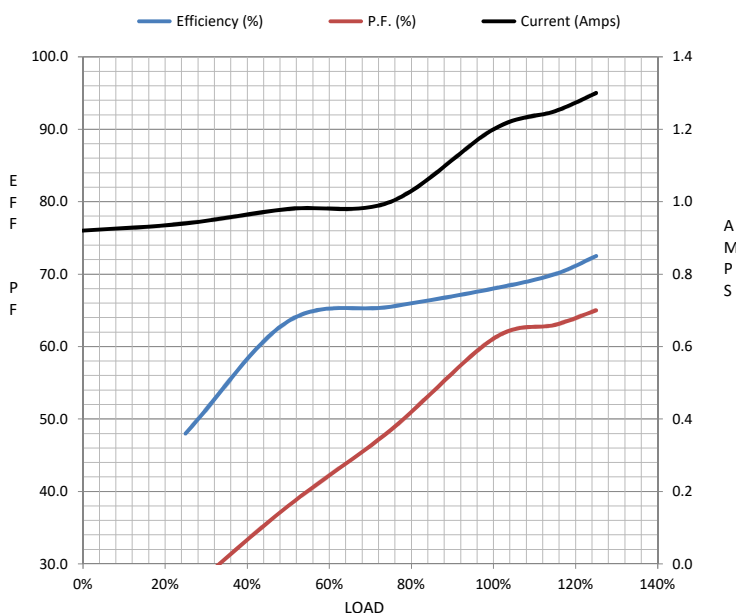
Load	0%	25%	50%	75%	100%	115%	125%	LR	
Current (Amps)	0.92	0.94	0.98	1.00	1.20	1.25	1.30	7.0	
Torque (ft-lb)	0.00	0.37	0.74	1.10	1.50	1.80	2.00	6.2	
RPM	1800	1785	1775	1750	1725	1,722	1720	0	
Efficiency (%)		48.0	63.5	65.5	68.0	70.0	72.5		
P.F. (%)	14.0	26.0	38.0	48.5	61.1	63.0	65.0	82.0	

## Motor Speed Data

	LR	Pull-Up	BD	Rated	Idle
Speed (RPM)	0	500	1150	1725	1800
Current (Amps)	7.0	6.5	4.8	1.20	0.92
Torque (ft-lb)	6.2	6.2	7.2	1.50	0.00

## Information Block

HP	0.5			
Sync. RPM	1800			
Frame	56			
Enclosure	EPFC			
Construction	TSE			
Voltage	208-230/460	V		
Frequency	60	Hz		
Design	NONE			
LR Code letter	M			
Service Factor	1			
Temp Rise @ FL	45	° C		
Duty	CONT			
Ambient	40	° C		
Elevation	3300	feet		
Rotor/Shaft wk²	0.05	Lb-Ft²		
Ref Wdg	ZT408 R8			
Sound Pressure @ 1M	62	dBA		
VFD Rating	NONE			
Outline Dwg	B-104189-681			
Conn. Diag	A-EE7335			
Additional Specifications:				
0				
0				
EQUIV CKT (OHMS / PHASE)				
R1	R2	X1	X2	Xm
0.0000	0.0000	0.0000	0.0000	0.0000



## Speed -Torque Curve

