

# PRODUCT INFORMATION PACKET

Model No: 056C11G5307

Catalog No: G652

Explosion Proof Motor, 0.33 HP, 1 Ph, 60 Hz, 115/208-230 V, 1200 RPM, 56 Frame, EPFC



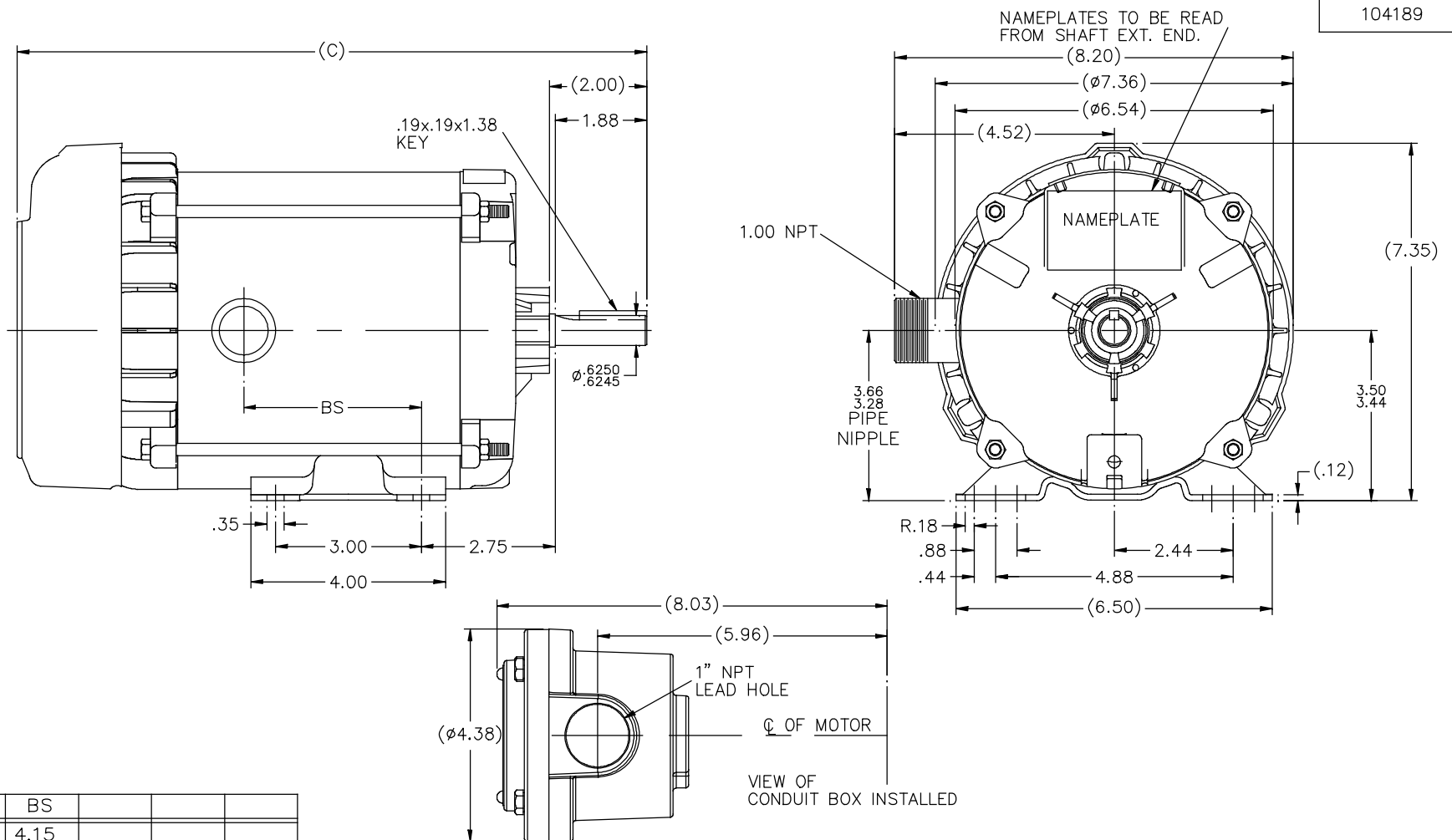
Regal and are trademarks of Regal Rexnord Corporation or one of its affiliated companies.  
©2022 Regal Rexnord Corporation, All Rights Reserved. MC017097E

### Nameplate Specifications

Output HP	0.33 Hp	Output KW	0.25 kW
Frequency	60 Hz	Voltage	115/208-230 V
Current	7.8/3.6-3.9 A	Speed	1140 rpm
Service Factor	1	Phase	1
Efficiency	52.5 %	Power Factor	53.8
Duty	Continuous	Insulation Class	B
Design Code	NO DESIGN CODE	KVA Code	N
Frame	56	Enclosure	Explosion Proof Fan cooled
Thermal Protection	Automatic	Ambient Temperature	40 °C
Drive End Bearing Size	6203	Opp Drive End Bearing Size	6203
UL	UL Listed And CSA Certified	CSA	Y
CE	N	IP Code	54
Hazardous Location	DIV 1 EXP PROOF CL I GR CD CL II GR FG T3B	Number of Speeds	1

### Technical Specifications

Electrical Type	Capacitor Start Induction Run	Starting Method	Across The Line
Poles	6	Rotation	Selective Counterclockwise
Resistance Main	0 Ohms	Mounting	Rigid Base
Motor Orientation	Horizontal	Drive End Bearing	Ball
Opp Drive End Bearing	Ball	Frame Material	Rolled Steel
Shaft Type	NEMA 56	Overall Length	13.94 in
Frame Length	6.81 in	Shaft Diameter	0.625 in
Shaft Extension	2 in	Assembly/Box Mounting	F1 ONLY
Outline Drawing	B-104189-681	Connection Drawing	102005-84



104189

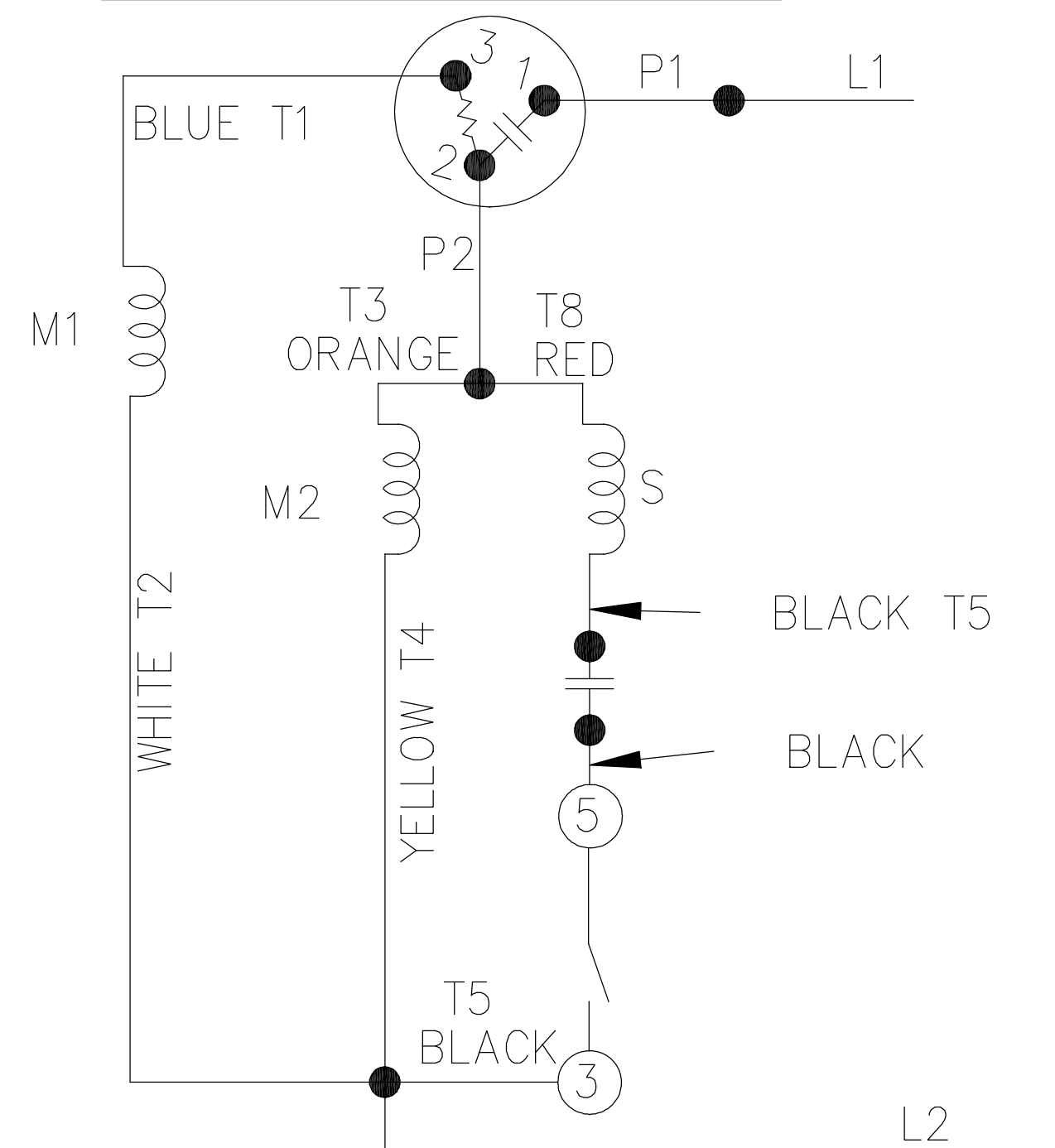
DASH	(C)	BS			
631	13.44	4.15			
681	13.94	4.65			
731	14.44	5.15			
781	14.94	5.65			
831	15.44	6.15			
881	15.94	6.65			
931	16.44	7.15			
981	16.94	7.65			

			TOLERANCES UNLESS SPECIFIED		REGAL <sup>TM</sup> Regal Beloit America, Inc.		DRAWN MH 11-20-1996	
			DEC.	INCHES			CHK	ML 12-02-1996
4	COND. BOX INSTALLED VIEW UPDATED PER ECR-0044571	UD 10/15/13	ST	.X	±.1	TITLE OUTLINE 56 FR. - EXP. PR. - TEFC - 1ø & 3ø	APPD	GK 12-02-1996
3	REVISED C'BOX PER CN40784A	JJB 02/23/2007	ML	.XX	±.03		SCALE	1=2
2	ADDED CONDUIT BOX VIEW CN 26686	MRB 03-22-1998	ML	.XXX	±.005		REF	
1	NEW DRAWING CN 23099	MH 12-02-1996	ML	.XXXX	±.0005		FMF	
REVISION			BY & DATE		CHK	ANG	±.730"	FINISH
THIS DRAWING IN DESIGN AND DETAIL IS OUR PROPERTY AND MUST NOT BE USED EXCEPT IN CONNECTION WITH OUR WORK. ALL RIGHTS OF DESIGN AND INVENTION ARE RESERVED. THIS IS AN ELECTRONICALLY GENERATED DOCUMENT - DO NOT SCALE THIS PRINT.			RFP				CAD FILE 104189	SIZE B
			DIST	WP				DRAWING NO. 104189
								PAGE OF 4

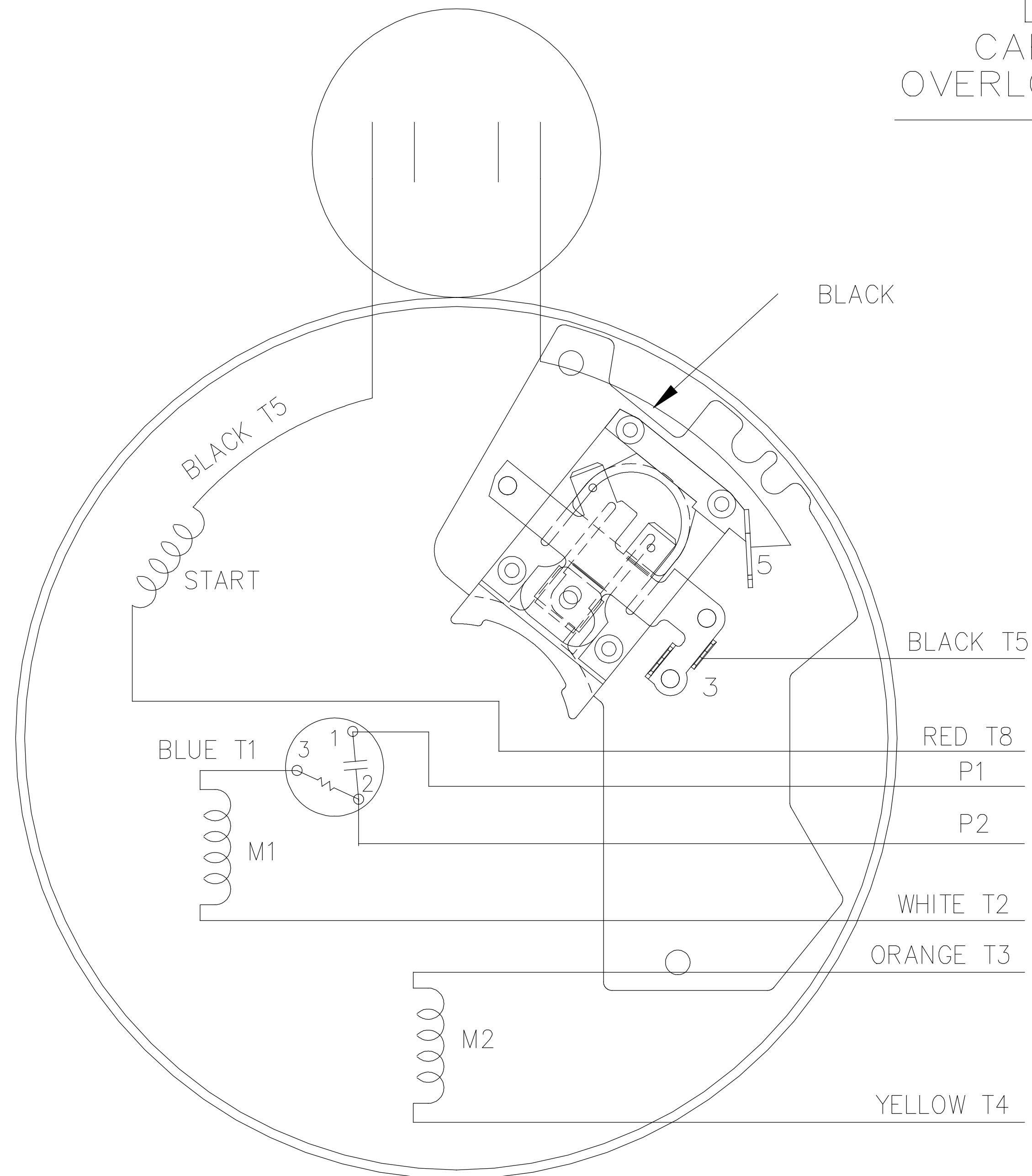
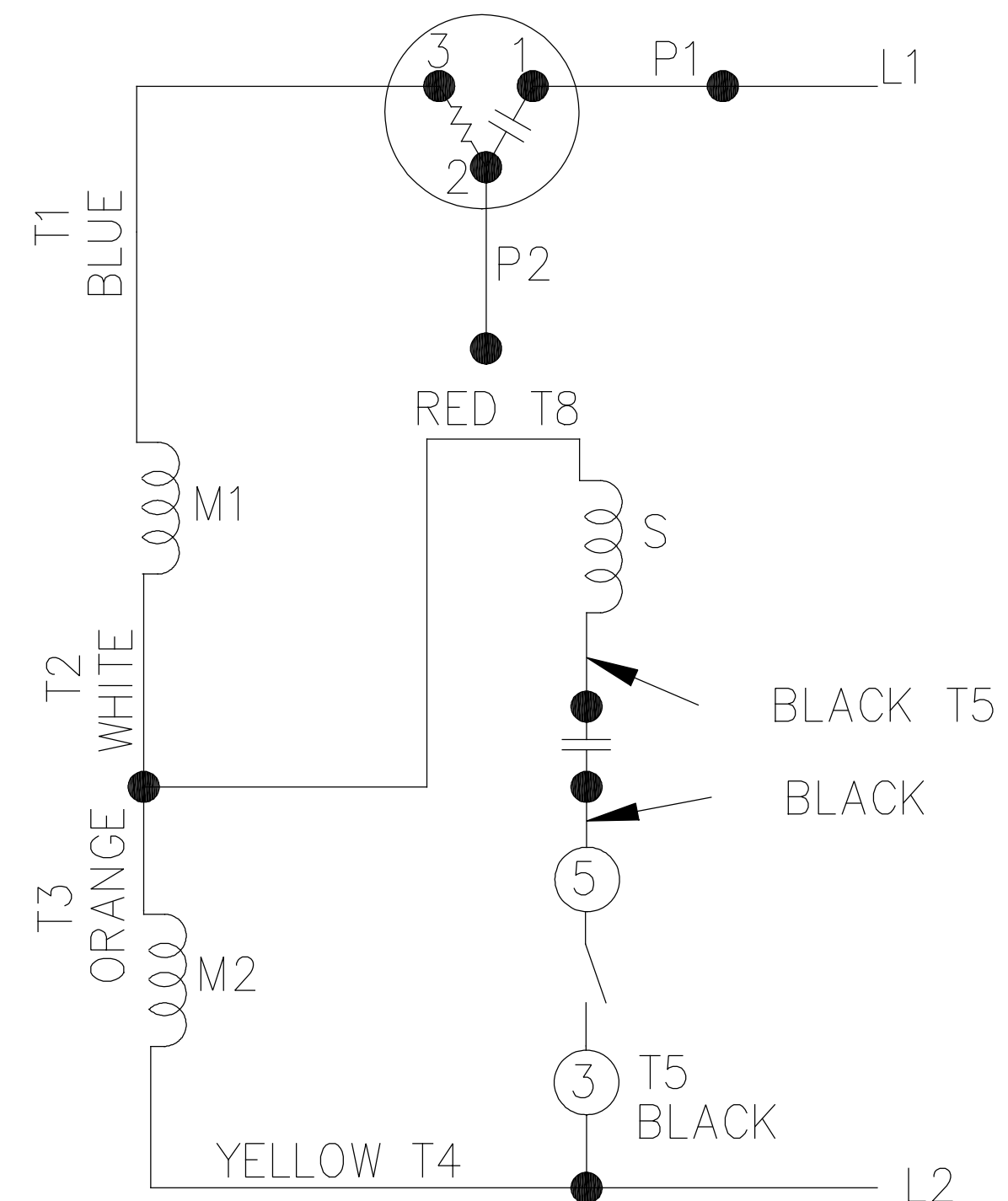
LOW VOLTAGE - C.C.W.

102005-84

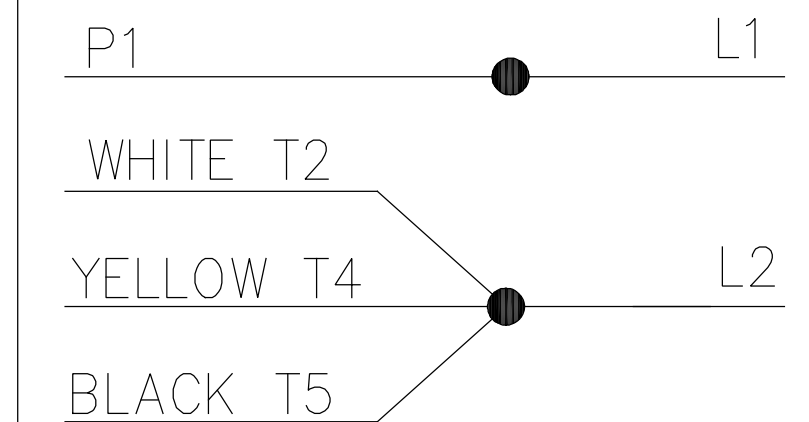
DUAL VOLTAGE  
CAPACITOR START  
OVERLOAD SELECT ROT.



HIGH VOLTAGE — C.C.W.



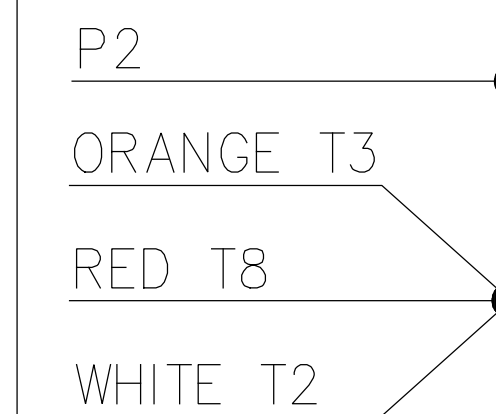
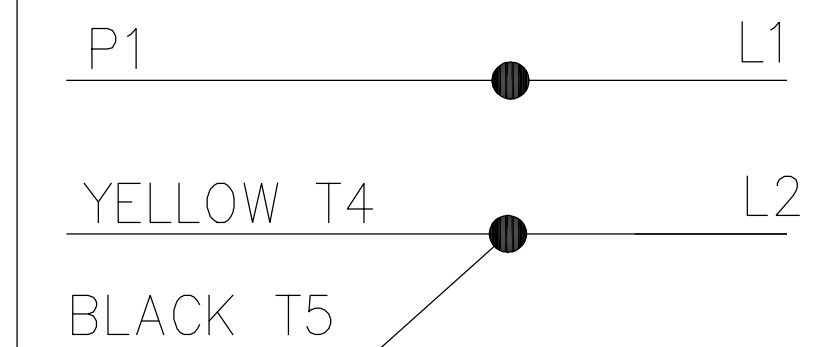
LOW VOLT. — C.C.W. ROT.




P2



HIGH VOLT. — C.C.W. ROT.
--------------------------



FOR C.W. ROTATION  
EITHER VOLTAGE  
INTERCHANGE RED(T8)  
WITH BLACK(T5) LEAD

				TOLERANCES UNLESS SPECIFIED		 <b>Regal Beloit America, Inc.</b>	DRAWN PGK 07-16-1996				
				DEC.	INCHES		CHK MRB 07-18-1996				
5	UPDATED TEMPLETE	MVG 12/11/2017	PVR	.X	±.1		APPD GK 07-18-1996				
4	REV'D CONNECTION TO MATCH ROTATION ISAAC 07-2021	JJB 09/05/2007	ML	.XX	±.02		TITLE CONNECTION DIAGRAM	SCALE 5=8			
3	ADDED T NO.'S MU16064	MH 08-09-1997		.XXX	±.005		REF				
2	REDRAWN ON CADD, NO CHANGES	PGK 07-18-1996		.XXXX	±.0005	MAT'L.	FMF				
NO.	REVISION	BY & DATE	CHK	ANG	±7'30"	FINISH	PREV				
THIS DRAWING IN DESIGN AND DETAIL IS OUR PROPERTY AND MUST NOT BE USED EXCEPT IN CONNECTION WITH OUR WORK ALL RIGHTS OF DESIGN AND INVENTION ARE RESERVED THIS IS AN ELECTRONICALLY GENERATED DOCUMENT - DO NOT SCALE THIS PRINT			RFP			CAD FILE 102005_84	SIZE	DRAWING NO.	PAGE	OF	REV.
			DIST WP					A	102005-84		

## CERTIFICATION DATA SHEET

Model#: 56C11G5307 F  
 CONN. DIAGRAM: 102005-84  
 OUTLINE: B-104189-681

WINDING#: ZC605 R1 3  
 ASSEMBLY: F1 ONLY

## TYPICAL MOTOR PERFORMANCE DATA

HP	KW	SYNC. RPM	F.L. RPM	FRAME	ENCLOSURE	KVA CODE	DESIGN
1/3	.25	1200	1140	56	EPFC	N	NO DESIGN CODE

PH	Hz	VOLTS	FL AMPS	START TYPE	DUTY	INSL	S.F	AMB°C	ELEVATION
1	60	115/208-230	7.8/3.6-3.9	ACROSS THE LINE	CONTINUOUS	B3	1.0	40	3300

FULL LOAD EFF: 52.5	3/4 LOAD EFF: 47.9	1/2 LOAD EFF: 39.4	GTD. EFF	ELEC. TYPE	NO LOAD AMPS
FULL LOAD PF: 53.8	3/4 LOAD PF: 44.6	1/2 LOAD PF: 36.8	0	CAP START IND RUN	7.3 / 3.7

F.L. TORQUE	LOCKED ROTOR AMPS	L.R. TORQUE	B.D. TORQUE	F.L. RISE°C
24 LB-FT	35.8 / 17.9	77.1 LB-FT 321	66.9 LB-FT 279	68

SOUND PRESSURE @ 3 FT.	SOUND POWER	ROTOR WK^2	MAX. WK^2	SAFE STALL TIME	STARTS /HOUR	APPROX. MOTOR WGT
0 dBA	10 dBA	0 LB-FT^2	0 LB-FT^2	10 SEC.	0	0 LBS.

## \*\*\* SUPPLEMENTAL INFORMATION \*\*\*

DE BRACKET TYPE	ODE BRACKET TYPE	MOUNT TYPE	ORIENTATION	SEVERE DUTY	HAZARDOUS LOCATION	DRIP COVER	SCREENS	PAINT
STANDARD	STANDARD	RIGID	HORIZONTAL	FALSE	EXP PROOF CL I GR C&D CL II GR F&G T3B	FALSE	NONE	GRAY (POWDER)

BEARINGS		GREASE	SHAFT TYPE	SPECIAL DE	SPECIAL ODE	SHAFT MATERIAL	FRAME MATERIAL
DE	OPE						
BALL	BALL						
6203	6203	POLYREX EM	T	NONE	NONE	1144 STRESSPROOF (C-223)	ROLLED STEEL

THERMO-PROTECTORS				THERMISTORS	CONTROL	SPACE /n HEATERS
THERMOSTATS	PROTECTORS	WDG RTDs	BRG RTDs			
NONE	AUTOMATIC	NONE	NONE	NONE	FALSE	NONE VOLTS

If Inverter equals NONE, contact factory for further information

* N O T E S *	INVERTER TORQUE: NONE					
	INV. HP SPEED RANGE: NONE					
	ENCODER: NONE					
	NONE NONE					
	NONE NONE PPR					
	BRAKE: NONE NONE					
	NONE P/N NONE					
	NONE NONE					
		NONE FT-LB		NONE V		NONE Hz

DATE: 06/27/2017 06:35:00 AM

FORM 3531 REV.3 02/07/99

\*\* Subject to change without notice.





# MARATHON ELECTRIC CORPORATION

TYPICAL PERFORMANCE CURVE for AC MOTOR

Customer

Curve at

230

Volts

HP 0.33

PHASE 1

Model No 56C11G5307

60

HZ

VOLTS 115/208-230

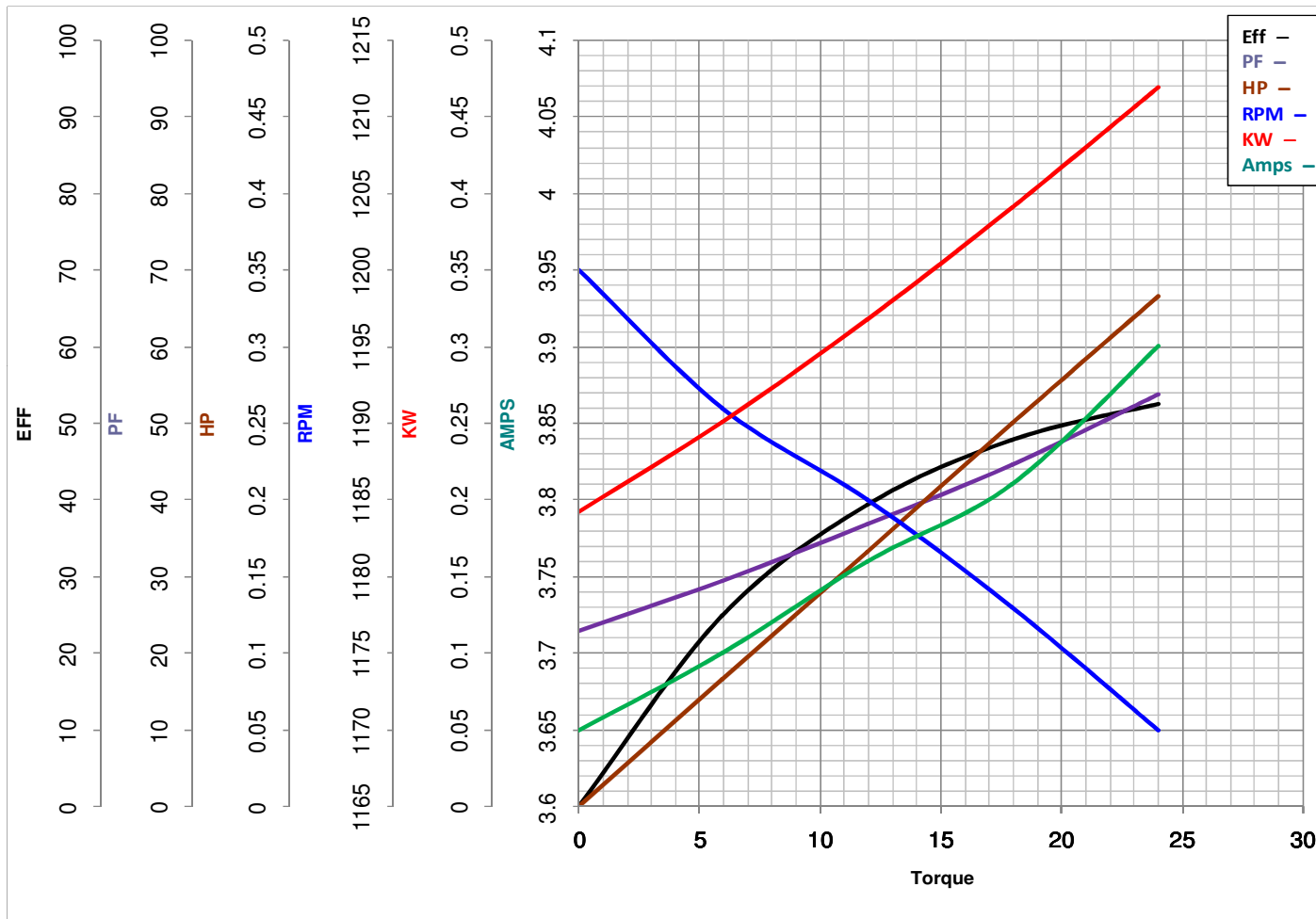
0.33

HP

Catalog No G652

HZ 60

RPM 1140



Torque in Oz.Ft

FL TORQUE 24 Oz.Ft

BD TORQUE 66.9 Oz.Ft

LR TORQUE 77.1 Oz.Ft

WINDING ZC605-3

FL AMPS 7.8/3.6-3.9

PU TORQUE 52.9 Oz.Ft

LR AMPS 17.9

Date 1/7/2019