

PRODUCT INFORMATION PACKET

Model No: 048B17D11015

Catalog No: C148A

General Purpose Motor, 0.25 HP, 1 Ph, 60 Hz, 115/230 V, 1800 RPM, 48 Frame, DP



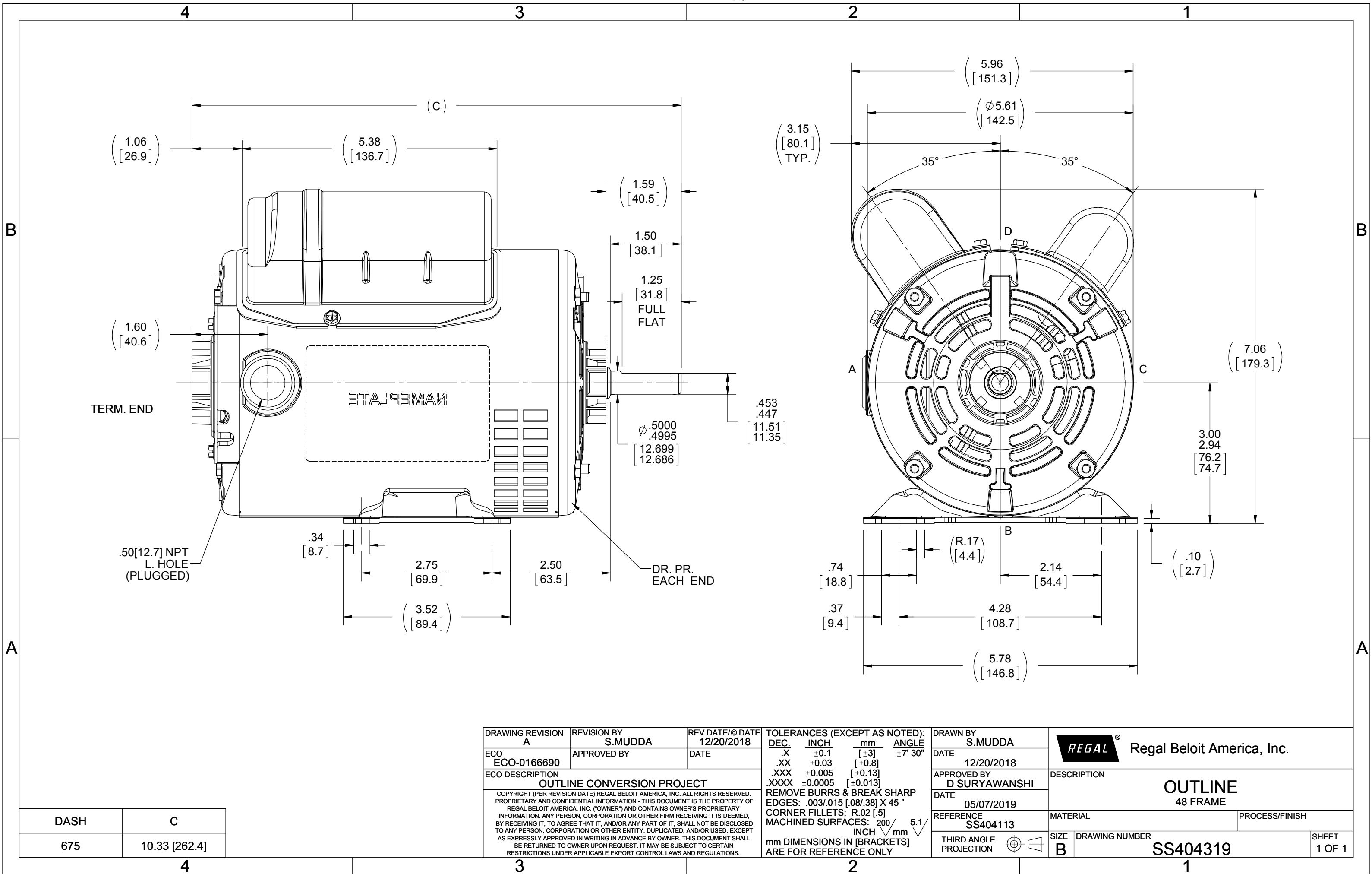
Regal and are trademarks of Regal Rexnord Corporation or one of its affiliated companies.
©2022 Regal Rexnord Corporation, All Rights Reserved. MC017097E


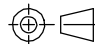
Nameplate Specifications

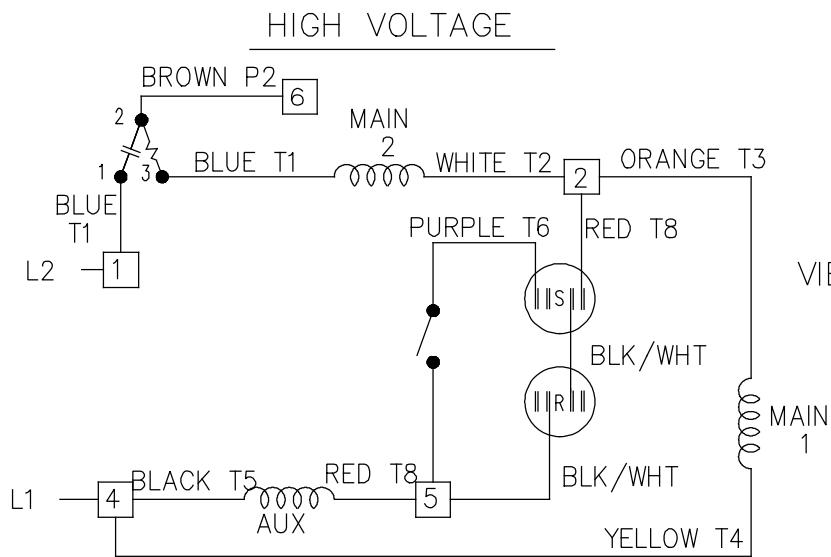
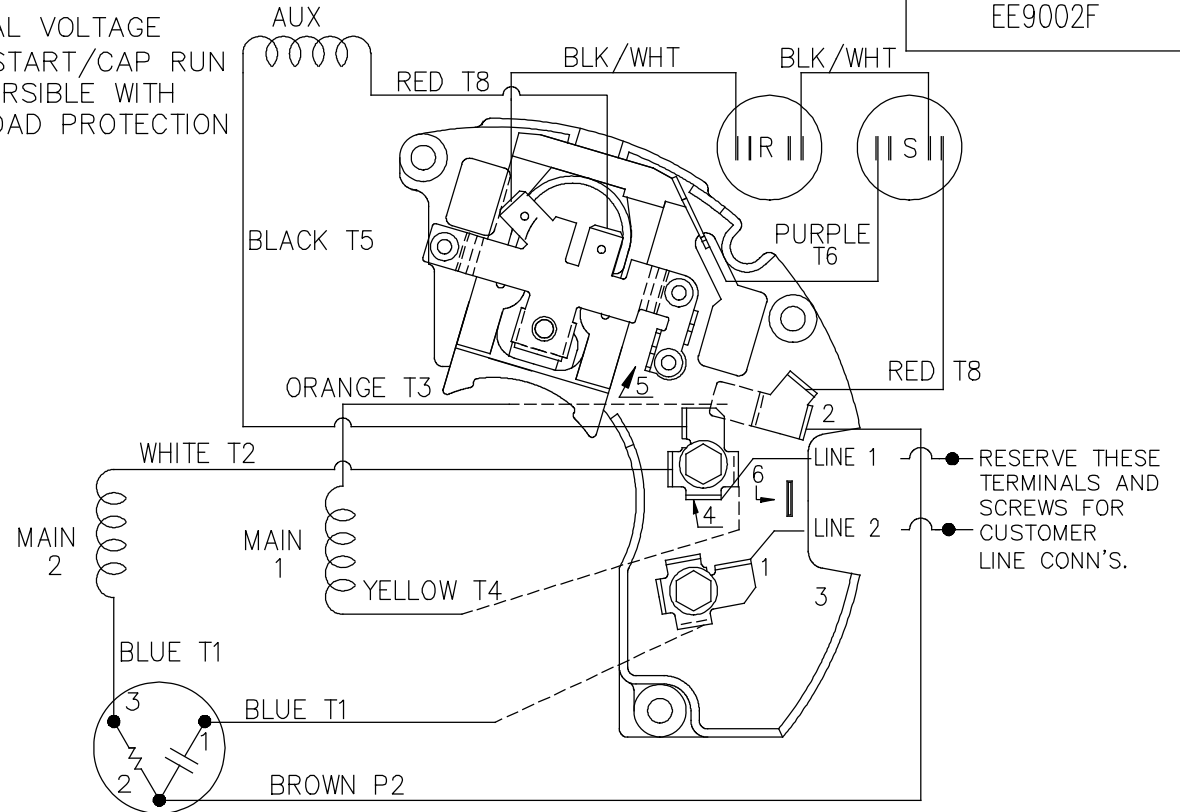
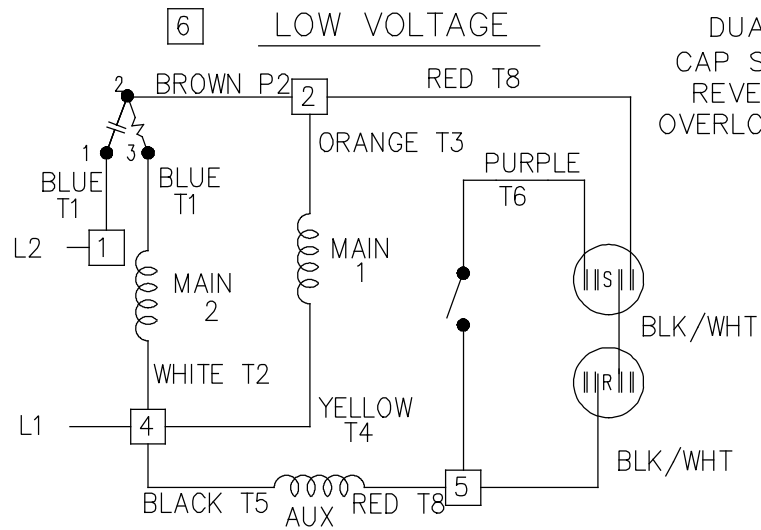
Output HP	0.25 Hp	Output KW	0.19 kW
Frequency	60 Hz	Voltage	115/230 V
Current	2.4/1.2 A	Speed	1725 rpm
Service Factor	1.35	Phase	1
Efficiency	68.5 %	Power Factor	92.7
Duty	Continuous	Insulation Class	B
Design Code	N	KVA Code	M
Frame	48	Enclosure	Drip Proof
Thermal Protection	Automatic	Ambient Temperature	40 °C
Drive End Bearing Size	6203	Opp Drive End Bearing Size	6203
UL	Recognized	CSA	Y
CE	Y	IP Code	22
Number of Speeds	1		

Technical Specifications

Electrical Type	Capacitor Start Capacitor Run	Starting Method	Across The Line
Poles	4	Rotation	Selective Counterclockwise
Resistance Main	0 Ohms	Mounting	Rigid Base
Motor Orientation	Horizontal	Drive End Bearing	Ball
Opp Drive End Bearing	Ball	Frame Material	Rolled Steel
Shaft Type	NEMA 48	Overall Length	10.34 in
Frame Length	6.75 in	Shaft Diameter	0.500 in
Shaft Extension	1.59 in	Assembly/Box Mounting	F1 ONLY
Connection Drawing	EE9002F	Outline Drawing	B-SS404319-675



DRAWING REVISION A	REVISION BY S.MUDDA	REV DATE/© DATE 12/20/2018	TOLERANCES (EXCEPT AS NOTED): <table><tr><td>DEC.</td><td>INCH</td><td>mm</td><td>ANGLE</td></tr><tr><td>.X</td><td>±0.1</td><td>[±3]</td><td>±7° 30"</td></tr><tr><td>.XX</td><td>±0.03</td><td>[±0.8]</td><td></td></tr><tr><td>.XXX</td><td>±0.005</td><td>[±0.13]</td><td></td></tr><tr><td>.XXXX</td><td>±0.0005</td><td>[±0.013]</td><td></td></tr></table> REMOVE BURRS & BREAK SHARP EDGES: .003/.015 [.08/.38] X 45 ° CORNER FILLETS: R.02 [.5] MACHINED SURFACES: 200 INCH 5.1 mm mm DIMENSIONS IN [BRACKETS] ARE FOR REFERENCE ONLY				DEC.	INCH	mm	ANGLE	.X	±0.1	[±3]	±7° 30"	.XX	±0.03	[±0.8]		.XXX	±0.005	[±0.13]		.XXXX	±0.0005	[±0.013]		DRAWN BY S.MUDDA	 Regal Beloit America, Inc.				
DEC.	INCH	mm					ANGLE																									
.X	±0.1	[±3]					±7° 30"																									
.XX	±0.03	[±0.8]																														
.XXX	±0.005	[±0.13]																														
.XXXX	±0.0005	[±0.013]																														
ECO ECO-0166690	APPROVED BY	DATE	DATE 12/20/2018																													
ECO DESCRIPTION OUTLINE CONVERSION PROJECT			APPROVED BY D SURYAWANSHI	DESCRIPTION OUTLINE 48 FRAME																												
COPYRIGHT (PER REVISION DATE) REGAL BELOIT AMERICA, INC. ALL RIGHTS RESERVED. PROPRIETARY AND CONFIDENTIAL INFORMATION - THIS DOCUMENT IS THE PROPERTY OF REGAL BELOIT AMERICA, INC. ("OWNER") AND CONTAINS OWNER'S PROPRIETARY INFORMATION. ANY PERSON, CORPORATION OR OTHER FIRM RECEIVING IT IS DEEMED, BY RECEIVING IT, TO AGREE THAT IT, AND/OR ANY PART OF IT, SHALL NOT BE DISCLOSED TO ANY PERSON, CORPORATION OR OTHER ENTITY, DUPLICATED, AND/OR USED, EXCEPT AS EXPRESSLY APPROVED IN WRITING IN ADVANCE BY OWNER. THIS DOCUMENT SHALL BE RETURNED TO OWNER UPON REQUEST. IT MAY BE SUBJECT TO CERTAIN RESTRICTIONS UNDER APPLICABLE EXPORT CONTROL LAWS AND REGULATIONS.			DATE 05/07/2019	REFERENCE SS404113	MATERIAL			PROCESS/FINISH																								
			THIRD ANGLE PROJECTION		SIZE B	DRAWING NUMBER SS404319			SHEET 1 OF 1																							




LOW VOLTAGE CCW ROTATION SHOWN.

FOR HIGH VOLTAGE
CONNECT BROWN TERM 2 TO TERM 6.
CONNECT WHITE TERM 4 TO TERM 2.

TO REVERSE ROTATION EITHER
VOLTAGE INTERCHANGE RED
LEAD WITH BLACK LEAD.

DASH LINES INDICATE LEADS CONNECTED
TO MOTOR SIDE OF SWITCH.

6	ADDED T MARKINGS	DS	07/19/2018	VC	TOLERANCES UNLESS SPECIFIED	 Regal Beloit America, Inc.	DRAWN ML	02-11-1988
5	REVISED LINE 2 LOCATION	RM	01-28-1991		DEC. INCHES		CHK FG	02-11-1988
4	UPDATED SCHEMATIC PER CN 6014	DA	08-01-1990		.X ± -	TITLE CONNECTION DIAGRAM 48 FR. DUAL VOLTAGE REVERSIBLE	APPD DNR	03-11-1988
3	RED LEAD FROM AUX WAS ON ANGLE TERM.	DA	07-02-1990		.XX ± -		SCALE	1=1
	PURPLE LEAD WAS RED CN 6014				.XXX ± -	MAT'L.	REF	
2	ADDED CUSTOMER CONNECTION NOTE. CN 6011	BW	08-03-1989		.XXXX ± -		FMF	
NO.	REVISION	BY & DATE	CHK	ANG	± -	FINISH	PREV	
THIS DRAWING IN DESIGN AND DETAIL IS OUR PROPERTY AND MUST NOT BE USED EXCEPT IN CONNECTION WITH OUR WORK ALL RIGHTS OF DESIGN AND INVENTION ARE RESERVED THIS IS AN ELECTRONICALLY GENERATED DOCUMENT - DO NOT SCALE THIS PRINT				RFP	CAD FILE	EE9002F	SIZE	DRAWING NO. PAGE OF
				DIST WP			A	EE9002F
								REV.
								6

CERTIFICATION DATA SHEET

Model#: 48B17D11015 A
 CONN. DIAGRAM: EE9002F
 OUTLINE: A-SS404113-675

WINDING#: BE484113 NONE 3
 ASSEMBLY: F1 ONLY

TYPICAL MOTOR PERFORMANCE DATA

HP	KW	SYNC. RPM	F.L. RPM	FRAME	ENCLOSURE	KVA CODE	DESIGN
1/4	0.19	1800	1725	48	DP	M	N

PH	Hz	VOLTS	FL AMPS	START TYPE	DUTY	INSL	S.F	AMB°C	ELEVATION
1	60	115/230	2.4/1.2	ACROSS THE LINE	CONTINUOUS	B3	1.35	40	3300

FULL LOAD EFF: 68.5	3/4 LOAD EFF: 65.7	1/2 LOAD EFF: 57.4	GTD. EFF	ELEC. TYPE	NO LOAD AMPS
FULL LOAD PF: 92.7	3/4 LOAD PF: 91.3	1/2 LOAD PF: 88.3	68.5	CAP START CAP RUN	1 / .5

F.L. TORQUE	LOCKED ROTOR AMPS	L.R. TORQUE	B.D. TORQUE	F.L. RISE°C
12 LB-FT	21.4 / 10.7	40.7 LB-FT 339	31 LB-FT 258	20

SOUND PRESSURE @ 3 FT.	SOUND POWER	ROTOR WK^2	MAX. WK^2	SAFE STALL TIME	STARTS /HOUR	APPROX. MOTOR WGT
0 dBA	10 dBA	0 LB-FT^2	0 LB-FT^2	10 SEC.	0	0 LBS.

*** SUPPLEMENTAL INFORMATION ***

DE BRACKET TYPE	ODE BRACKET TYPE	MOUNT TYPE	ORIENTATION	SEVERE DUTY	HAZARDOUS LOCATION	DRIP COVER	SCREENS	PAINT
STANDARD	STANDARD	RIGID	HORIZONTAL	FALSE	NONE	FALSE	NONE	GRAY (POWDER)

BEARINGS		GREASE	SHAFT TYPE	SPECIAL DE	SPECIAL ODE	SHAFT MATERIAL	FRAME MATERIAL
DE	OPE						
BALL	BALL						
6203	6203	MULTEMP SRL	STANDARD 48	NONE	NONE	1144 STRESSPROOF (C-223)	ROLLED STEEL

THERMO-PROTECTORS				THERMISTORS	CONTROL	SPACE /n HEATERS
THERMOSTATS	PROTECTORS	WDG RTDs	BRG RTDs			
NONE	AUTOMATIC	NONE	NONE	NONE	FALSE	NONE VOLTS

If Inverter equals NONE, contact factory for further information

INVERTER TORQUE: NONE
INV. HP SPEED RANGE: NONE
ENCODER: NONE
NONE NONE
NONE NONE PPR
BRAKE: NONE NONE
NONE P/N NONE
NONE NONE
NONE FT-LB NONE V NONE Hz

*
N
O
T
E
S
*

DATE: 06/28/2017 06:11:39 AM
 FORM 3531 REV.3 02/07/99
 ** Subject to change without notice.


MARATHON ELECTRIC CORPORATION

TYPICAL PERFORMANCE CURVE for AC MOTOR

Customer

Curve at

230

Volts

 HP 0.25

 PHASE 1

 Model No 48B17D11015
60

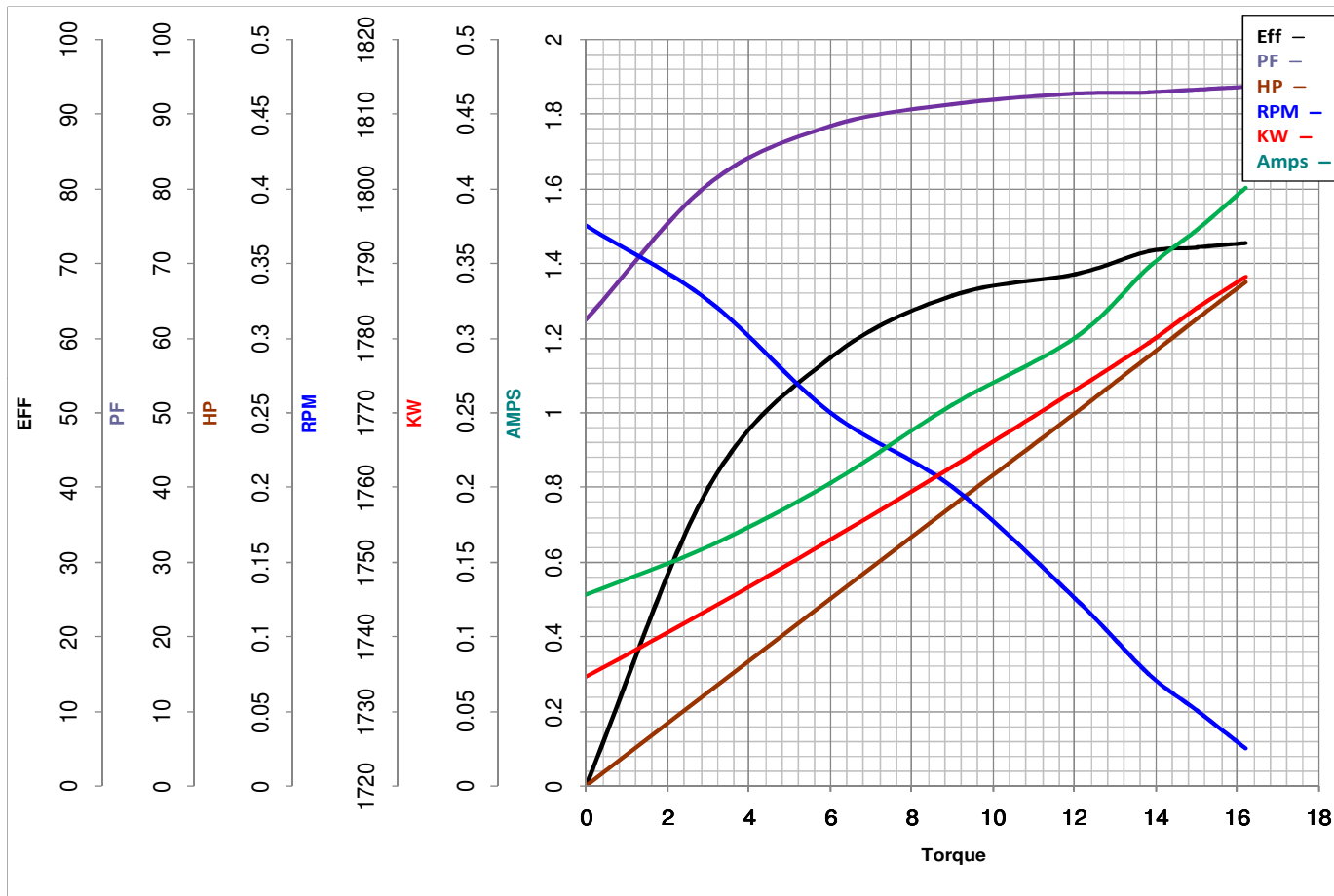
HZ

 VOLTS 115/230
0.25

HP

 HZ 60

 RPM 1725

 Catalog No C148A


Torque in Oz.Ft

FL TORQUE 12 Oz.Ft
 BD TORQUE 31.0 Oz.Ft
 LR TORQUE 40.7 Oz.Ft

FL AMPS 2.4/1.2
 PU TORQUE 40.7 Oz.Ft
 LR AMPS 10.7

WINDING BE484113-3

Date 1/4/2019