

# PRODUCT INFORMATION PACKET



Model No: A444M175N-14  
Catalog No: A444M175N-14  
A-A444M175N-14 ROTOR ASY /SD

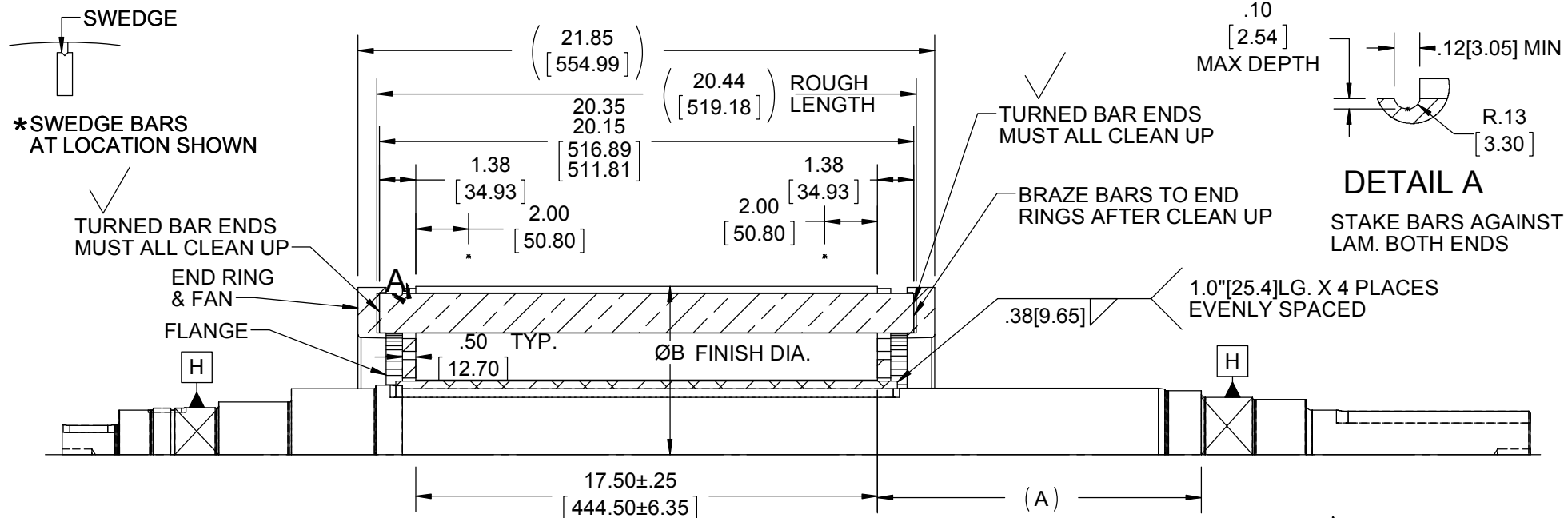
Regal and Marathon are trademarks of Regal Rexnord Corporation or one of its affiliated companies.  
©2025 Regal Rexnord Corporation, All Rights Reserved. MC017097E



## Nameplate Specifications

## Technical Specifications

This is an uncontrolled document once printed or downloaded and is subject to change without notice. Date Created:04/05/2025



PART NAME	PART NUMBER	QTY	PART NUMBER	QTY	PART NUMBER	QTY	PART NUMBER	QTY
ROTOR ASSEMBLY	A-A444M175N-1	---	A-A444M175N-2	---	A-A444M175N-3	---	A-A444M175N-4	---
SHAFT	B-518009-2875A	1	B-518384-2875A	1	B-518391-2875A	1	B-518533-2875A	1
LAMINATION	B-516882D-BS	17.50	B-516882D-BS	17.50	B-516882D-BS	17.50	B-516882D-BS	17.50
FLANGE	A-23126-86	2	A-93627	2	A-93627	2	A-93627	2
BAR	A-504057-60	38	A-504057-60	38	A-504057-60	38	A-504057-60	38
END RING	B-517518A-A	2	B-517518A-A	2	B-517518A-A	2	B-517518A-A	2
KEY-ROTOR	A-91183-3	1	A-91183-3	1	A-91183-3	1	A-91183-3	1
			*** IEEE841 ***					
ROTOR TREATMENT	NONE		SEVERE DUTY		SEVERE DUTY		NONE	
BRAZING ROD	PHOSON 'O'	3.0 LBS	PHOSON 'O'	3.0 LBS	PHOSON 'O'	3.0 LBS	PHOSON 'O'	3.0 LBS
DIM 'A'	8.77[222.76]		13.28[337.31]		13.76[349.50]		14.38[365.25]	
FINISH DIA 'B'	NONE		NONE		NONE		NONE	
BALANCE	CLASS 1 PRECISION		CLASS 1 PRECISION CHECK SHAFT RUNOUT/A-515397		CLASS 1 PRECISION		CLASS 1 PRECISION	

DRAWING REVISION J	REVISION BY RTT	DATE 05-07-2019
ECO ECO-0166413	APPROVED BY DJK	DATE 05-09-2019
ECO DESCRIPTION ADDED -19, UPDATED -12 TO 13.78, -14, & -17 TO 2875B		

TOLERANCES UNLESS OTHERWISE SPECIFIED:

DEC.	INCH	mm	ANGLE
.X	±0.1	[±2.5]	±0.5°
.XX	±0.01	[±0.25]	
.XXX	±0.005	[±0.127]	
.XXXX	±0.0005	[±0.0127]	

REMOVE BURRS & BREAK SHARP EDGES: .003/.015 [.076/.381]

CORNER FILLETS: .02 [.51]

MACHINED SURFACES: 125/3.2 INCH/mm

mm SHOWN IN [BRACKETS]

DRAWN BY  
KL

DATE  
10-19-2000

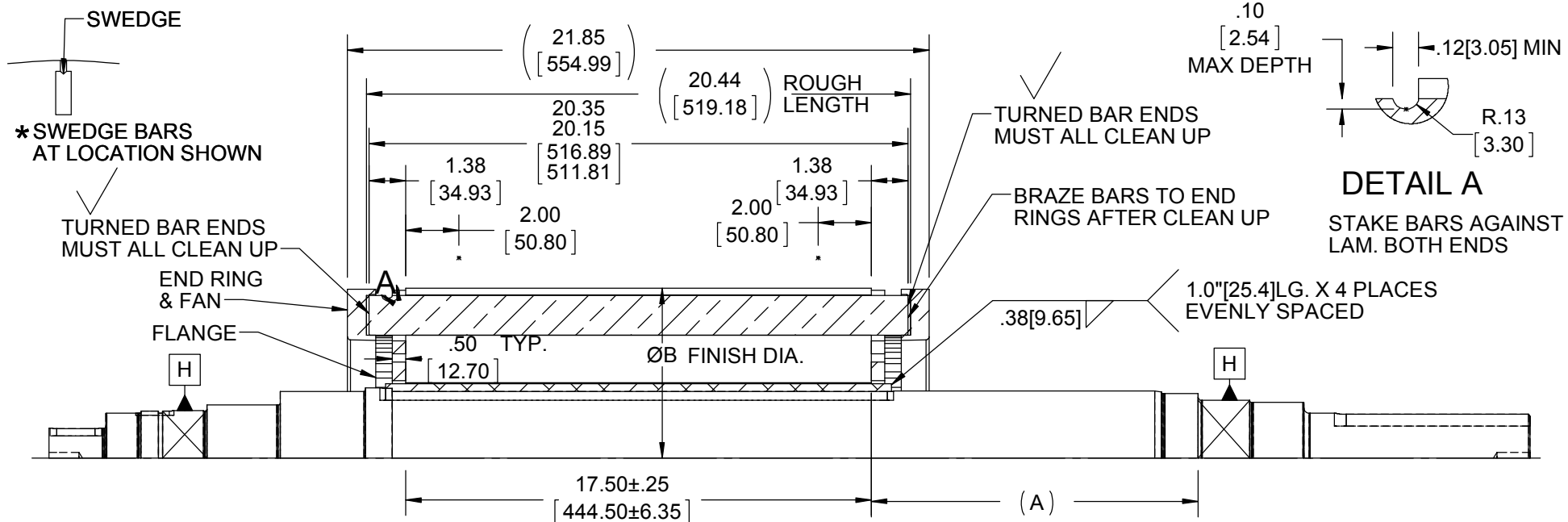
APPROVED BY  
DJK

DATE  
10-19-2000

REFERENCE

THIRD ANGLE PROJECTION

<b>REGAL</b> ™ Regal Beloit America, Inc.	
DESCRIPTION <b>ROTOR ASSY</b> BAR ROTOR - 449 FR. - 4P - 17.50 STACK	
MATERIAL	PROCESS/FINISH
SIZE <b>A</b>	DRAWING NUMBER <b>A444M175N</b>
SHEET 1 OF 5	



PART NAME	PART NUMBER	QTY	PART NUMBER	QTY	08-27-2002 PART NUMBER	QTY	10-07-2003 PART NUMBER	QTY
ROTOR ASSEMBLY	A-A444M175N-5	---	A-A444M175N-6	---	A-A444M175N-7	---	A-A444M175N-8	
SHAFT	B-518533-2875A	1	B-518978-2875	1	B-518384-2875A	1	B-518384-2875A	1
LAMINATION	B-516882D-BS	17.50	B-516882D-BS	17.50	B-516882D-BS	17.50	B-516882D-BS	17.50
FLANGE	A-93627	2	A-93627	2	A-93627	2	A-93627	2
BAR	A-504057-60	38	A-504057-60	38	A-504057-60	38	A-504057-60	38
END RING	B-517518A-A	2	B-517518A-A	2	B-517518A-A	2	B-517518A-A	2
KEY-ROTOR	A-91183-3	1	A-91183-3	1	A-91183-3	1	A-91183-3	1
ROTOR TREATMENT	SEVERE DUTY		SEVERE DUTY		SEVERE DUTY		-	
BRAZING ROD	PHOSON 'O'	3.0 LBS	PHOSON 'O'	3.0 LBS	PHOSON 'O'	3.0 LBS	PHOSON 'O'	3.0 LBS
DIM 'A'	14.38[365.25]		13.76[349.50]		13.28[337.31]		13.85[351.79]	
FINISH DIA 'B'	NONE		NONE		NONE		NONE	
BALANCE	CLASS 1 PRECISION		CLASS 1 PRECISION		CLASS 1 PRECISION		CLASS 1 PRECISION	

DRAWING REVISION J  
ECO ECO-0166413  
ECO DESCRIPTION  
ADDED -19, UPDATED -12 TO 13.78, -14, & -17 TO 2875B

COPYRIGHT REGAL BELOIT AMERICA, INC. ALL RIGHTS RESERVED.  
PROPRIETARY AND CONFIDENTIAL INFORMATION - THIS DOCUMENT IS THE PROPERTY OF REGAL BELOIT AMERICA, INC. ("OWNER") AND CONTAINS OWNER'S PROPRIETARY INFORMATION. ANY PERSON, CORPORATION OR OTHER FIRM RECEIVING IT IS DEEMED, BY RECEIVING IT, TO AGREE THAT IT, AND/OR ANY PART OF IT, SHALL NOT BE DISCLOSED TO ANY PERSON, CORPORATION OR OTHER ENTITY, DUPLICATED, AND/OR USED, EXCEPT AS EXPRESSLY APPROVED IN WRITING IN ADVANCE BY OWNER. THIS DOCUMENT SHALL BE RETURNED TO OWNER UPON REQUEST. IT MAY BE SUBJECT TO CERTAIN RESTRICTIONS UNDER APPLICABLE EXPORT CONTROL LAWS AND REGULATIONS.

TOLERANCES UNLESS OTHERWISE SPECIFIED:  
DEC. INCH mm ANGLE  
.X ±0.1 [±2.5] ±0.5°  
.XX ±0.01 [±0.25]  
.XXX ±0.005 [±0.127]  
.XXXX ±0.0005 [±0.0127]  
REMOVE BURRS & BREAK SHARP EDGES: .003/.015 [.076/.381]  
CORNER FILLETS: .02 [.51]  
MACHINED SURFACES: 125 3.2 / INCH mm  
mm SHOWN IN [BRACKETS]

DRAWN BY KL  
DATE 07-31-2001  
APPROVED BY JES  
DATE 07-31-2001  
REFERENCE  
THIRD ANGLE PROJECTION



Regal Beloit America, Inc.

DESCRIPTION

**ROTOR ASSY**  
BAR ROTOR - 449 FR. - 4P - 17.50 STACK

MATERIAL

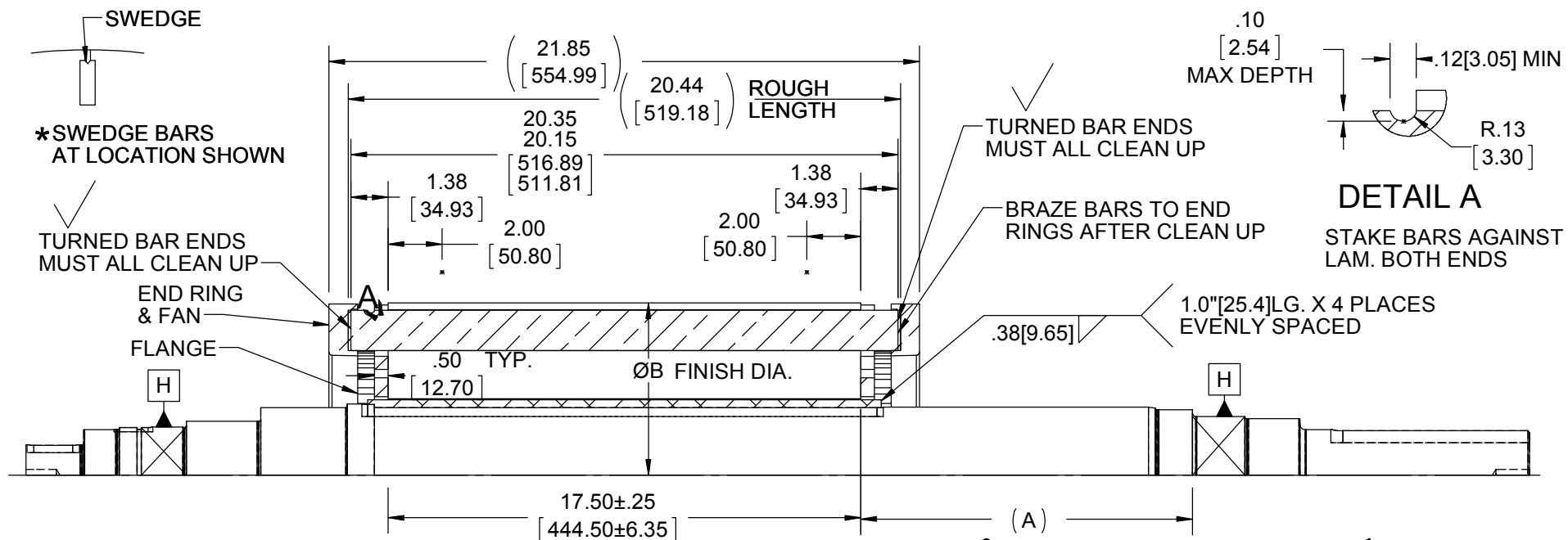
PROCESS/FINISH

SIZE  
A

DRAWING NUMBER

**A444M175N**


SHEET  
2 OF 5

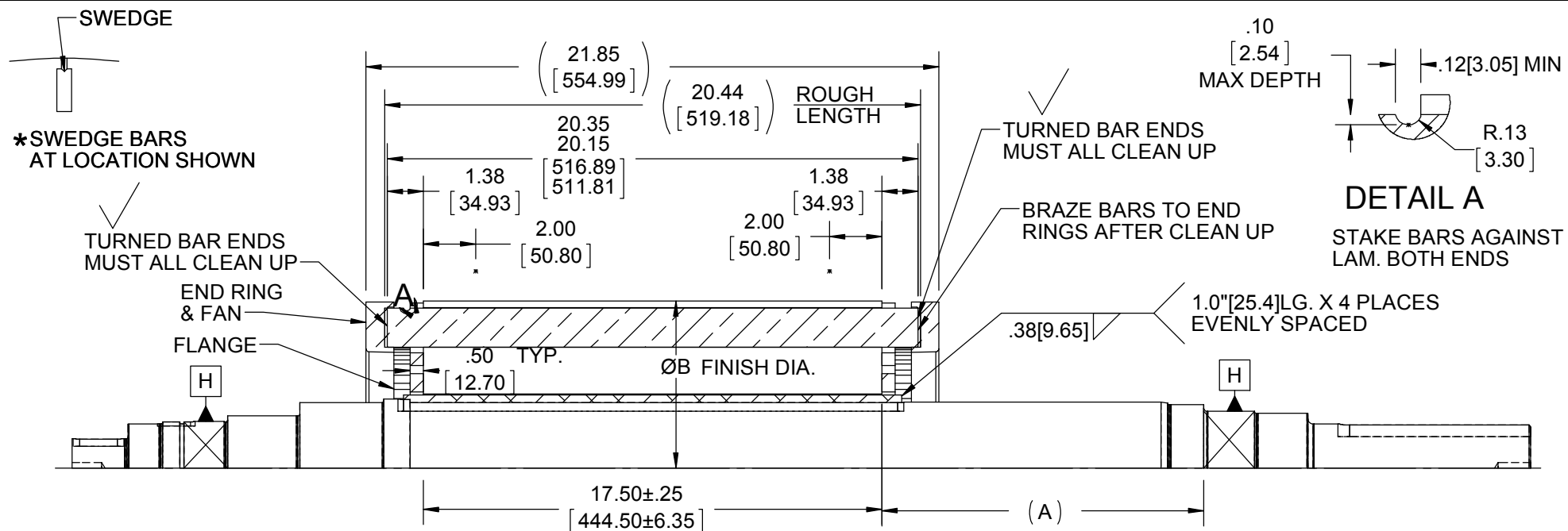



PART NAME	PART NUMBER	QTY	PART NUMBER	QTY	PART NUMBER	QTY	PART NUMBER	QTY
ROTOR ASSEMBLY	A-A444M175N-9	---	A-A444M175N-10	---	A-A444M175N-11	---	A-A444M175N-12	---
SHAFT	B-550048-2875A	1	B-518978-2875	1	B-518978-2875	1	B-552471-2875A	1
LAMINATION	B-516882D-BS	17.50	B-516882D-BS	17.50	B-516882D-BS	17.50	B-516882D-BS	17.50
FLANGE	A-93627	2	A-93627	2	A-93627	2	A-93627	2
BAR	A-504057-60	38	A-504057-60	38	A-504057-60	38	A-504057-60	38
END RING	B-517518A-A	2	B-517518A-A	2	B-517518A-A	2	B-517518A-A	2
KEY-ROTOR	A-91183-3	1	A-91183-3	1	A-91183-3	1	A-91183-3	1
					*** IEEE841***			
ROTOR TREATMENT	SEVERE DUTY		NONE		SEVERE DUTY		SEVERE DUTY	
BRAZING ROD	PHOSON 'O'	3.0 LBS	PHOSON 'O'	3.0 LBS	PHOSON 'O'	3.0 LBS	PHOSON 'O'	3.0 LBS
DIM 'A'	14.38[365.25]		14.38[365.25]		14.38[365.25]		13.78[350.01]	
FINISH DIA 'B'	NONE		NONE		NONE		NONE	
BALANCE	CLASS 1 PRECISION		CLASS 1 PRECISION		CLASS 1 PRECISION CHECK SHAFT RUNOUT/A-515397		CLASS 1 PRECISION	

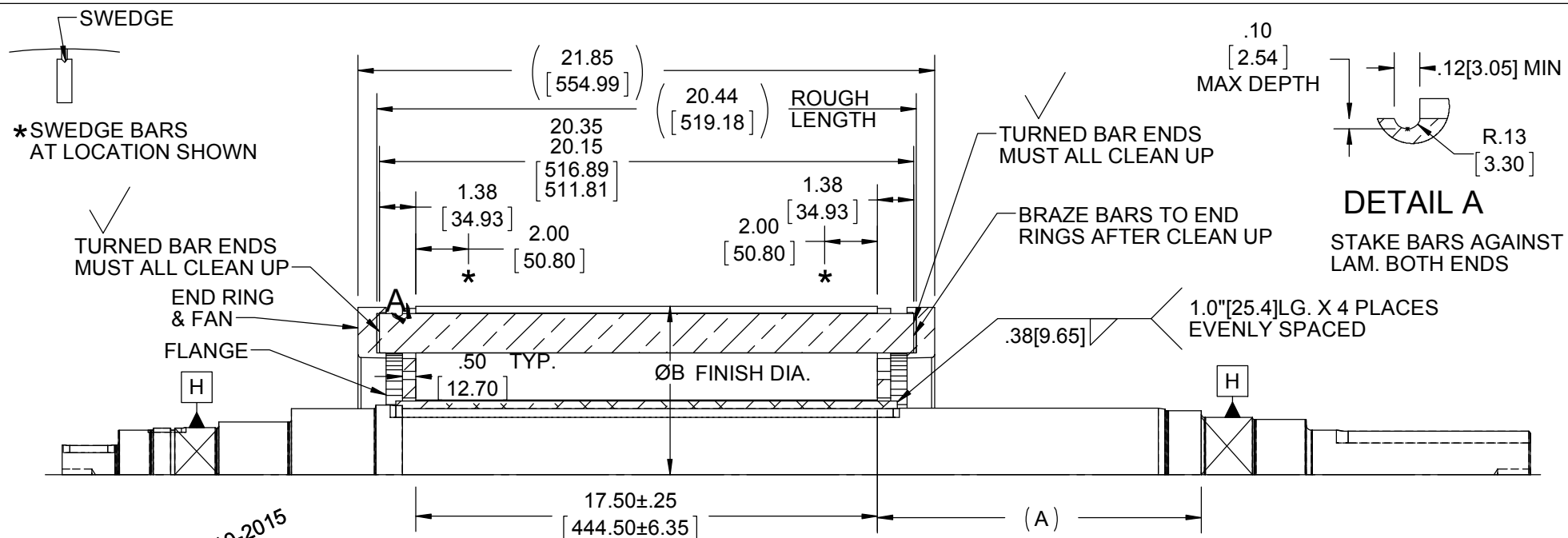
DRAWING REVISION J	REVISION BY RTT	DATE 05-07-2019
ECO ECO-0166413	APPROVED BY DJK	DATE 05-09-2019
ECO DESCRIPTION ADDED -19, UPDATED -12 TO 13.78, -14, & -17 TO 2875B		
COPYRIGHT REGAL BELOIT AMERICA, INC. ALL RIGHTS RESERVED. PROPRIETARY AND CONFIDENTIAL INFORMATION - THIS DOCUMENT IS THE PROPERTY OF REGAL BELOIT AMERICA, INC. ("OWNER") AND CONTAINS OWNER'S PROPRIETARY INFORMATION. ANY PERSON, CORPORATION OR OTHER FIRM RECEIVING IT IS DEEMED, BY RECEIVING IT, TO AGREE THAT IT, AND/OR ANY PART OF IT, SHALL NOT BE DISCLOSED TO ANY PERSON, CORPORATION OR OTHER ENTITY, DUPLICATED, AND/OR USED, EXCEPT AS EXPRESSLY APPROVED IN WRITING IN ADVANCE BY OWNER. THIS DOCUMENT SHALL BE RETURNED TO OWNER UPON REQUEST. IT MAY BE SUBJECT TO CERTAIN RESTRICTIONS UNDER APPLICABLE EXPORT CONTROL LAWS AND REGULATIONS.		

TOLERANCES UNLESS OTHERWISE SPECIFIED:			
DEC.	INCH	mm	ANGLE
.X	±0.1	[±2.5]	±0.5°
.XX	±0.01	[±0.25]	
.XXX	±0.005	[±0.127]	
.XXXX	±0.0005	[±0.0127]	
REMOVE BURRS & BREAK SHARP EDGES: .003/.015 [.076/.381]			
CORNER FILLETS: .02 [.51]			
MACHINED SURFACES: 125/3.2			
mm SHOWN IN [BRACKETS]			

DRAWN BY KL	 <b>Regal</b> Beloit America, Inc.		
DATE 10-16-2003			
APPROVED BY JES	<b>ROTOR ASSY</b> BAR ROTOR - 449 FR. - 4P - 17.50 STACK		
DATE 10-17-2003			
REFERENCE	MATERIAL	PROCESS/FINISH	
THIRD ANGLE PROJECTION	SIZE A	DRAWING NUMBER A444M175N	SHEET 3 OF 5



PART NAME	PART NUMBER	QTY	PART NUMBER	QTY	PART NUMBER	QTY	PART NUMBER	QTY
ROTOR ASSEMBLY	A-A444M175N-13	---	A-A444M175N-14	---	A-A444M175N-15	---	A-A444M175N-16	----
SHAFT	B-555952-2875A	1	B-518978-2875B	1	B-551018-2875D	1	B-550016-2875B	1
LAMINATION	B-516882D-BS	17.50	B-516882D-BS	17.50	B-516882D-BS	17.50	B-516882D-BS	17.50
FLANGE	A-93627	2	A-93627	2	A-93627	2	A-93627	2
BAR	A-504057-60	38	A-504057-60	38	A-504057-60	38	A-504057-60	38
END RING	B-517518A-A	2	B-517518A-A	2	B-517518A-A	2	B-517518A-A	2
KEY-ROTOR	A-91183-3	1	A-91183-3	1	A-91183-3	1	A-91183-3	1
ROTOR TREATMENT	SEVERE DUTY		SEVERE DUTY		SEVERE DUTY		SEVERE DUTY	
BRAZING ROD	PHOSON 'O'	3.0 LBS	PHOSON 'O'	3.0 LBS	PHOSON 'O'	3.0 LBS	PHOSON 'O'	3.0 LBS
DIM 'A'	12.75[323.85]		12.75[323.85]		12.28[311.91]		13.85[351.79]	
FINISH DIA 'B'	NONE		NONE		12.648/12.652[321.259/321.361]		12.648/12.652[321.259/321.361]	
BALANCE	CLASS 1 PRECISION		CLASS 1 PRECISION		CLASS 1 PRECISION		CLASS 1 PRECISION	
DRAWING REVISION	REVISION BY	DATE	TOLERANCES UNLESS OTHERWISE SPECIFIED:			DRAWN BY	 <b>Regal Beloit America, Inc.</b>	
J	RTT	05-07-2019				KL		
ECO	APPROVED BY	DATE	DEC.	INCH	mm	ANGLE	<b>ROTOR ASSY</b> <b>BAR ROTOR - 449 FR. - 4P - 17.50 STACK</b>	
ECO-0166413	DJK	05-09-2019	.X	±0.1	[±2.5]	±0.5°		
ECO DESCRIPTION ADDED -19, UPDATED -12 TO 13.78, -14, & -17 TO 2875B COPYRIGHT REGAL BELOIT AMERICA, INC. ALL RIGHTS RESERVED. PROPRIETARY AND CONFIDENTIAL INFORMATION - THIS DOCUMENT IS THE PROPERTY OF REGAL BELOIT AMERICA, INC. ("OWNER") AND CONTAINS OWNER'S PROPRIETARY INFORMATION. ANY PERSON, CORPORATION OR OTHER FIRM RECEIVING IT IS DEEMED, BY RECEIVING IT, TO AGREE THAT IT, AND/OR ANY PART OF IT, SHALL NOT BE DISCLOSED TO ANY PERSON, CORPORATION OR OTHER ENTITY, DUPLICATED, AND/OR USED, EXCEPT AS EXPRESSLY APPROVED IN WRITING IN ADVANCE BY OWNER. THIS DOCUMENT SHALL BE RETURNED TO OWNER UPON REQUEST. IT MAY BE SUBJECT TO CERTAIN RESTRICTIONS UNDER APPLICABLE EXPORT CONTROL LAWS AND REGULATIONS.			.XX	±0.01	[±0.25]		DESCRIPTION <b>ROTOR ASSY</b> <b>BAR ROTOR - 449 FR. - 4P - 17.50 STACK</b>	
			.XXX	±0.005	[±0.127]			
			.XXXX	±0.0005	[±0.0127]		MATERIAL PROCESS/FINISH	
			REMOVE BURRS & BREAK SHARP EDGES: .003/.015 [.076/.381] CORNER FILLETS: .02 [.51] MACHINED SURFACES: 125/ 3.2/ INCH mm					
			mm SHOWN IN [BRACKETS]			THIRD ANGLE PROJECTION	SIZE	DRAWING NUMBER
							A	A444M175N
								SHEET 4 OF 5



PART NAME	PART NUMBER	QTY	PART NUMBER	QTY	PART NUMBER	QTY	PART NUMBER	QTY
ROTOR ASSEMBLY	A-A444M175N-17		A-A444M175N-18		A-A444M175N-19			
SHAFT	B-518978-2875B	1	B-557835-2875A	1	B-552471-2875D	1		
LAMINATION	B-516882D-BS	17.50	B-516882D-BS	17.50	B-516882D-BS	17.50		
FLANGE	A-93627	2	A-93627	2	A-93627	2		
BAR	A-504057-60	38	A-504057-60	38	A-504057-60	38		
END RING	B-517518A-A	2	B-517518A-A	2	B-517518A-A	2		
KEY-ROTOR	A-91183-3	1	A-91183-3	1	A-91183-3	1		
	***IEE841***							
ROTOR TREATMENT	SEVERE DUTY		SEVERE DUTY		SEVERE DUTY			
BRAZING ROD	PHOSON 'O'	3.0 LBS	PHOSON 'O'	3.0 LBS	PHOSON 'O'	3.0LBS		
DIM 'A'	13.26[336.80]		12.85		12.78			
FINISH DIA 'B'	12.648/12.652 [321.259/321.361]		12.648/12.652		12.648/12.652			
BALANCE	CLASS 1 PRECISION CHECK SHAFT RUNOUT/A-515397		CLASS 1 PRECISION BALANCE		CLASS 1 PRECISION BALANCE			

DRAWING REVISION J		REVISION BY RTT		DATE 05-07-2019		TOLERANCES UNLESS OTHERWISE SPECIFIED: <div><div>DEC.</div><div>INCH</div><div>mm</div><div>ANGLE</div></div> <div><div>.X</div><div>±0.1</div><div>[ ±2.5]</div><div>±0.5°</div></div> <div><div>.XX</div><div>±0.01</div><div>[ ±0.25]</div></div> <div><div>XXX</div><div>±0.005</div><div>[ ±0.127]</div></div> <div><div>.XXXX</div><div>±0.0005</div><div>[ ±0.0127]</div></div> <div>REMOVE BURRS &amp; BREAK SHARP</div> <div>EDGES: .003/.015 [.076/.381]</div> <div>CORNER FILLETS: .02 [.51]</div> <div>MACHINED SURFACES: 125</div> <div>INCH</div> <div>mm</div> <div>3.2</div> <div>mm SHOWN IN [BRACKETS]</div>				DRAWN BY KL		<div><div>REGAL™</div><div>Regal Beloit America, Inc.</div></div>				DESCRIPTION <div>ROTOR ASSY</div> <div>BAR ROTOR - 449 FR. - 4P - 17.50 STACK</div>				MATERIAL		PROCESS/FINISH		SIZE A		DRAWING NUMBER A444M175N		SHEET 5 OF 5	
ECO ECO-0166413		APPROVED BY DJK		DATE 05-09-2019						DATE 10-16-2003																			
ECO DESCRIPTION ADDED -19, UPDATED -12 TO 13.78, -14, & -17 TO 2875B COPYRIGHT REGAL BELOIT AMERICA, INC. ALL RIGHTS RESERVED. PROPRIETARY AND CONFIDENTIAL INFORMATION - THIS DOCUMENT IS THE PROPERTY OF REGAL BELOIT AMERICA, INC. ("OWNER") AND CONTAINS OWNER'S PROPRIETARY INFORMATION. ANY PERSON, CORPORATION OR OTHER FIRM RECEIVING IT IS DEEMED, BY RECEIVING IT, TO AGREE THAT IT, AND/OR ANY PART OF IT, SHALL NOT BE DISCLOSED TO ANY PERSON, CORPORATION OR OTHER ENTITY, DUPLICATED, AND/OR USED, EXCEPT AS EXPRESSLY APPROVED IN WRITING IN ADVANCE BY OWNER. THIS DOCUMENT SHALL BE RETURNED TO OWNER UPON REQUEST. IT MAY BE SUBJECT TO CERTAIN RESTRICTIONS UNDER APPLICABLE EXPORT CONTROL LAWS AND REGULATIONS.																													