

PRODUCT INFORMATION PACKET

Model No: 048A11O1239

Catalog No: X268

Refrigeration Motor, 0.33 HP, 1 Ph, 60 Hz, 208-230 V, 1200 RPM, 48Y Frame, OAO



Regal and are trademarks of Regal Rexnord Corporation or one of its affiliated companies.

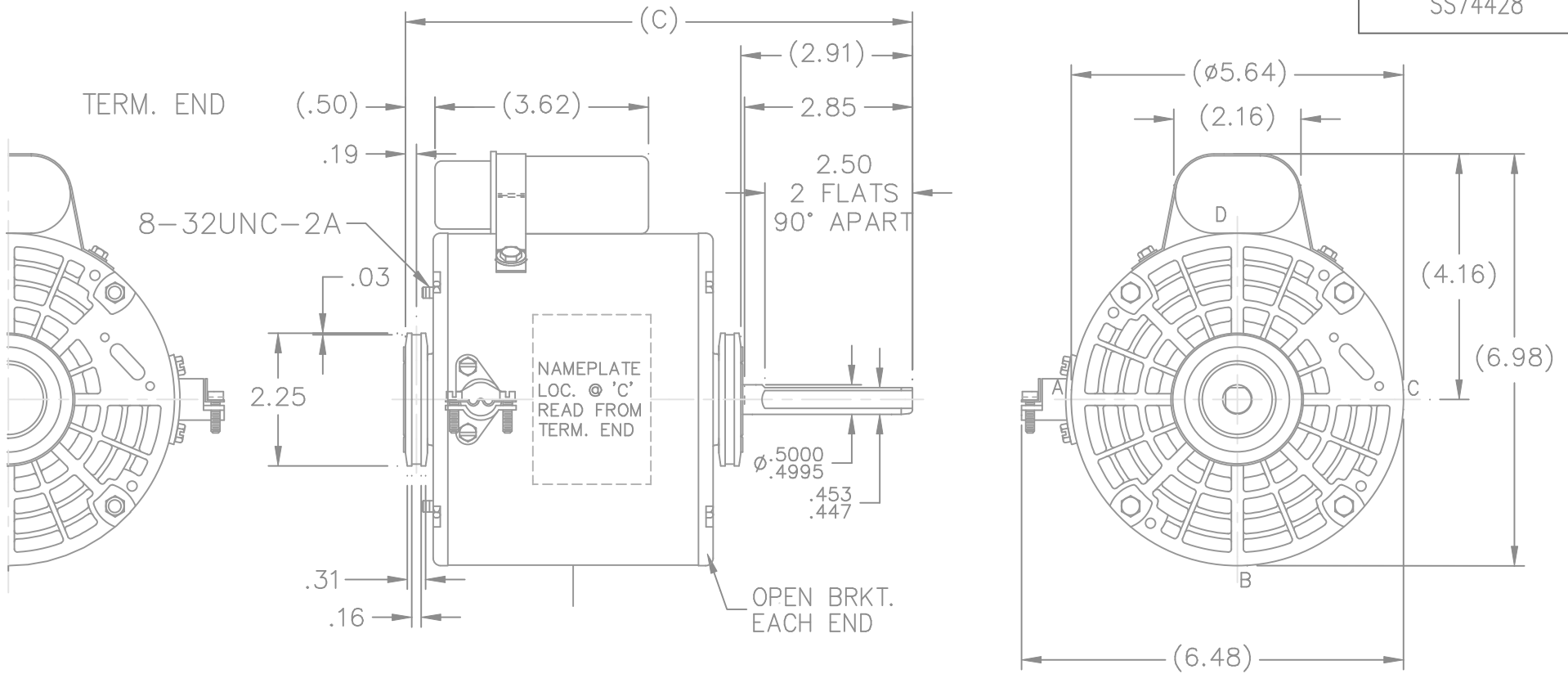
©2022 Regal Rexnord Corporation, All Rights Reserved. MC017097E

Nameplate Specifications

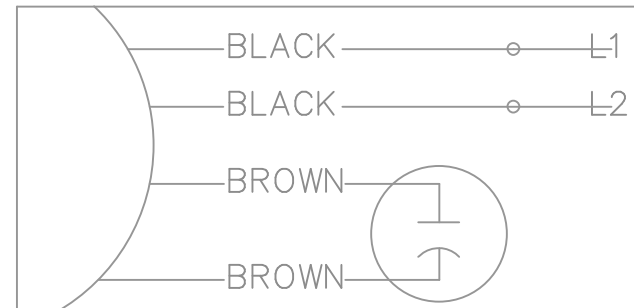
Output HP	0.33 Hp	Output KW	0.25 kW
Frequency	60 Hz	Voltage	208-230 V
Current	2.2-2.0 A	Speed	1075 rpm
Service Factor	1	Phase	1
Efficiency	64 %	Power Factor	85.6
Duty	Continuous	Insulation Class	B
Design Code	NO DESIGN CODE	KVA Code	D
Frame	48Y	Enclosure	Open Air Over
Thermal Protection	Automatic Lock Rotor Only	Ambient Temperature	40 °C
Drive End Bearing Size	6203	Opp Drive End Bearing Size	6203
UL	Recognized	CSA	Y
CE	N	IP Code	01
Number of Speeds	1		

Technical Specifications


Electrical Type	Permanent Split Capacitor	Starting Method	Across The Line
Poles	6	Rotation	Fixed Clockwise
Resistance Main	0 Ohms	Mounting	Resilient Rings
Motor Orientation	Horizontal	Drive End Bearing	Ball
Opp Drive End Bearing	Ball	Frame Material	Rolled Steel
Shaft Type	Single Special Extension	Overall Length	8.60 in
Shaft Diameter	0.500 in	Shaft Extension	2.91 in
Assembly/Box Mounting	F1 ONLY		
Outline Drawing	A-SS74428-425	Connection Drawing	9510634

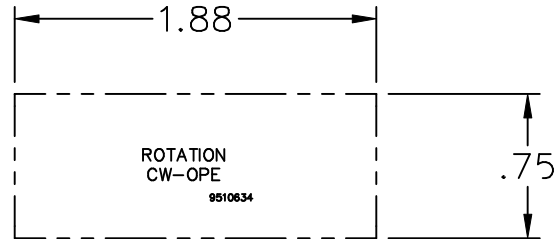



LEAD DESCRIPTION:
2 BLACK LEADS W/.75 BARE WIRE STRIPED
12.00-14.00" LONG



DASH	FR.	C
425	48	8.60

				TOLERANCES UNLESS SPECIFIED			DRAWN MRB 03-16-1998							
				DEC.	INCHES		CHK	ML	03-30-1998					
				.X	±.1		APPD	GK	03-30-1998					
3	CORRECTED STUD BOLTS	CN09-1776	TJW 5/14/2009	CTO	.XX		±.03	TITLE OUTLINE		SCALE	3=8			
2	SHAFT EXT. WAS (1) FLAT NOW (2)	CN 29400-1064	DRS 10-29-2002	ML	.XXX	±.005			REF					
1	REDRAWN AND UPDATED ON CADD	MRB 03-30-1998			.XXXX	±.0005	MAT'L.		FMF					
NO.	REVISION	BY & DATE	CHK	ANG	±7'30"	FINISH				PREV				
THIS DRAWING IN DESIGN AND DETAIL IS OUR PROPERTY AND MUST NOT BE USED EXCEPT IN CONNECTION WITH OUR WORK ALL RIGHTS OF DESIGN AND INVENTION ARE RESERVED THIS IS AN ELECTRONICALLY GENERATED DOCUMENT - DO NOT SCALE THIS PRINT			RFP			CAD FILE			ss74428	SIZE	DRAWING NO.	PAGE	OF	REV.
			DIST			WP					A	SS74428		



				TOLERANCES UNLESS SPECIFIED			DRAWN RR 08-27-1976			
				DEC.	INCHES		CHK	GK	08-27-1976	
				.X	±.1		APPD	HM	08-31-1976	
				.XX	±.02		SCALE 1=1			
2	REDRAWN IN AUTOCAD	HLB 01-11-2005	ML	.XXX	±.005		REF			
1	NEW DRAWING ECN 171	RR 09-02-1976		.XXXX	±.0005	MAT'L.			FMF	
NO.	REVISION	BY & DATE	CHK	ANG	±7'30"	FINISH			PREV	
THIS DRAWING IN DESIGN AND DETAIL IS OUR PROPERTY AND MUST NOT BE USED EXCEPT IN CONNECTION WITH OUR WORK ALL RIGHTS OF DESIGN AND INVENTION ARE RESERVED THIS IS AN ELECTRONICALLY GENERATED DOCUMENT – DO NOT SCALE THIS PRINT			RFP		CAD FILE 9510634		SIZE	DRAWING NO.	PAGE OF	REV.
			DIST WP				A	9510634		2

CERTIFICATION DATA SHEET

Model#: 48A1101239 D
 CONN. DIAGRAM: 9510634
 OUTLINE: A-SS74428-425

WINDING#: PE4861168 NONE 2
 ASSEMBLY: F1 ONLY

TYPICAL MOTOR PERFORMANCE DATA

HP	KW	SYNC. RPM	F.L. RPM	FRAME	ENCLOSURE	KVA CODE	DESIGN
1/3	0.25	1200	1075	48Y	OPAO	D	NO DESIGN CODE

PH	Hz	VOLTS	FL AMPS	START TYPE	DUTY	INSL	S.F	AMB°C	ELEVATION
1	60	208-230	3.0	ACROSS THE LINE	CONTINUOUS	B3	1.0	40	3300

FULL LOAD EFF: -	3/4 LOAD EFF: -	1/2 LOAD EFF: -	GTD. EFF	ELEC. TYPE	NO LOAD AMPS
FULL LOAD PF: -	3/4 LOAD PF: -	1/2 LOAD PF: -	-	PSC 1 SPEED	1.3

F.L. TORQUE	LOCKED ROTOR AMPS	L.R. TORQUE	B.D. TORQUE	F.L. RISE°C
24.5 LB-FT	6.7	8.4 LB-FT -	48.3 LB-FT -	-

SOUND PRESSURE @ 3 FT.	SOUND POWER	ROTOR WK^2	MAX. WK^2	SAFE STALL TIME	STARTS /HOUR	APPROX. MOTOR WGT
- dBA	- dBA	- LB-FT^2	- LB-FT^2	- SEC.	-	- LBS.

*** SUPPLEMENTAL INFORMATION ***

DE BRACKET TYPE	ODE BRACKET TYPE	MOUNT TYPE	ORIENTATION	SEVERE DUTY	HAZARDOUS LOCATION	DRIP COVER	SCREENS	PAINT
STANDARD	STANDARD	RESILIENT RINGS	HORIZONTAL	FALSE	NONE	FALSE	NONE	GRAY (POWDER)

BEARINGS		GREASE	SHAFT TYPE	SPECIAL DE	SPECIAL ODE	SHAFT MATERIAL	FRAME MATERIAL
DE	OPE						
BALL	BALL						
6203	6203	BEACON 325	SGL SPL EXT	0.500 x 2.85 WITH 2.50 DBL FULL FLATS	NONE	1144 STRESSPROOF (C-223)	ROLLED STEEL

THERMO-PROTECTORS				THERMISTORS	CONTROL	SPACE /n HEATERS
THERMOSTATS	PROTECTORS	WDG RTDs	BRG RTDs			
NONE	AUT LCK RTR ONLY	NONE	NONE	NONE	FALSE	NONE VOLTS

If Inverter equals NONE, contact factory for further information

*
N
O
T
E
S
*

INVERTER TORQUE: NONE
INV. HP SPEED RANGE: NONE
ENCODER: NONE
NONE NONE
NONE NONE PPR
BRAKE: NONE NONE
NONE P/N NONE
NONE NONE
NONE FT-LB NONE V NONE Hz

DATE: 06/27/2017 03:37:19 AM
 FORM 3531 REV.3 02/07/99
 ** Subject to change without notice.